

## SE Boulder Office/Medical Suites for Lease

**4790 TABLE MESA DR | BOULDER, CO 80305**  
Zoning: MR-D

### UNIT #100

Size: 1,344 SF  
Rate: \$3,000/Mo Gross  
Available: 60 Days

### UNIT #108

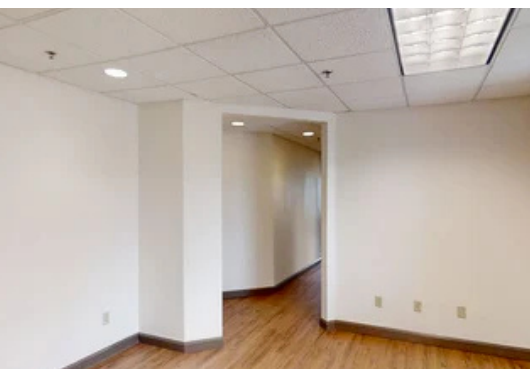
Size: 1,425 SF  
Rate: \$3,200/Mo Gross  
Available: Now

# SUITES FOR LEASE

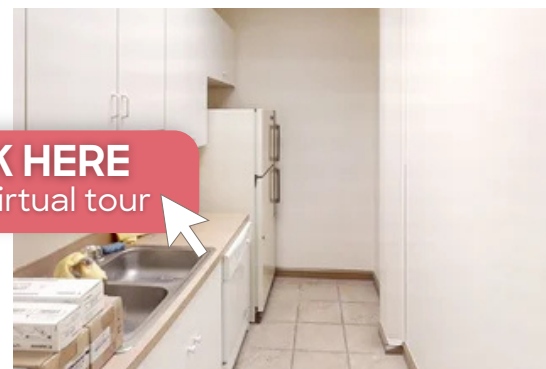
Discover the right fit for your business. These suites offer a thoughtful mix of open space and private offices, giving you the flexibility to create a layout that works for your practice or firm. With plenty of secure parking, an easy-to-reach location, and a professional yet welcoming atmosphere, it's a space designed to make work feel seamless.

## PROPERTY HIGHLIGHTS

- Ground floor suites with private offices, reception, kitchenette, and brand new paint and flooring
- Natural Light in nearly every nook and cranny of the space so you can bring the outside in!
- Secure parking, elevator access, and great location



**CLICK HERE**  
for 108 virtual tour

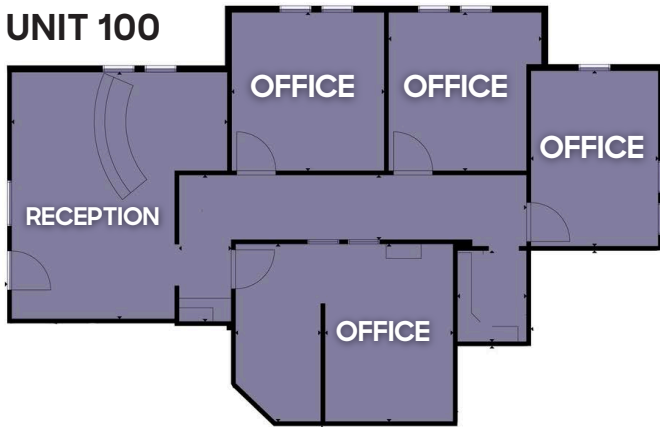


LEARN MORE ABOUT THIS PROPERTY  
**MarketBoulder.com**

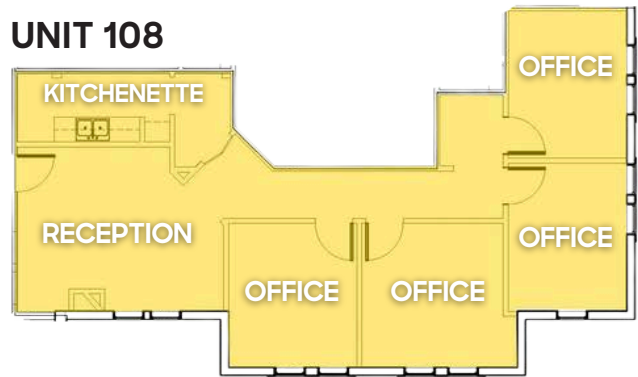




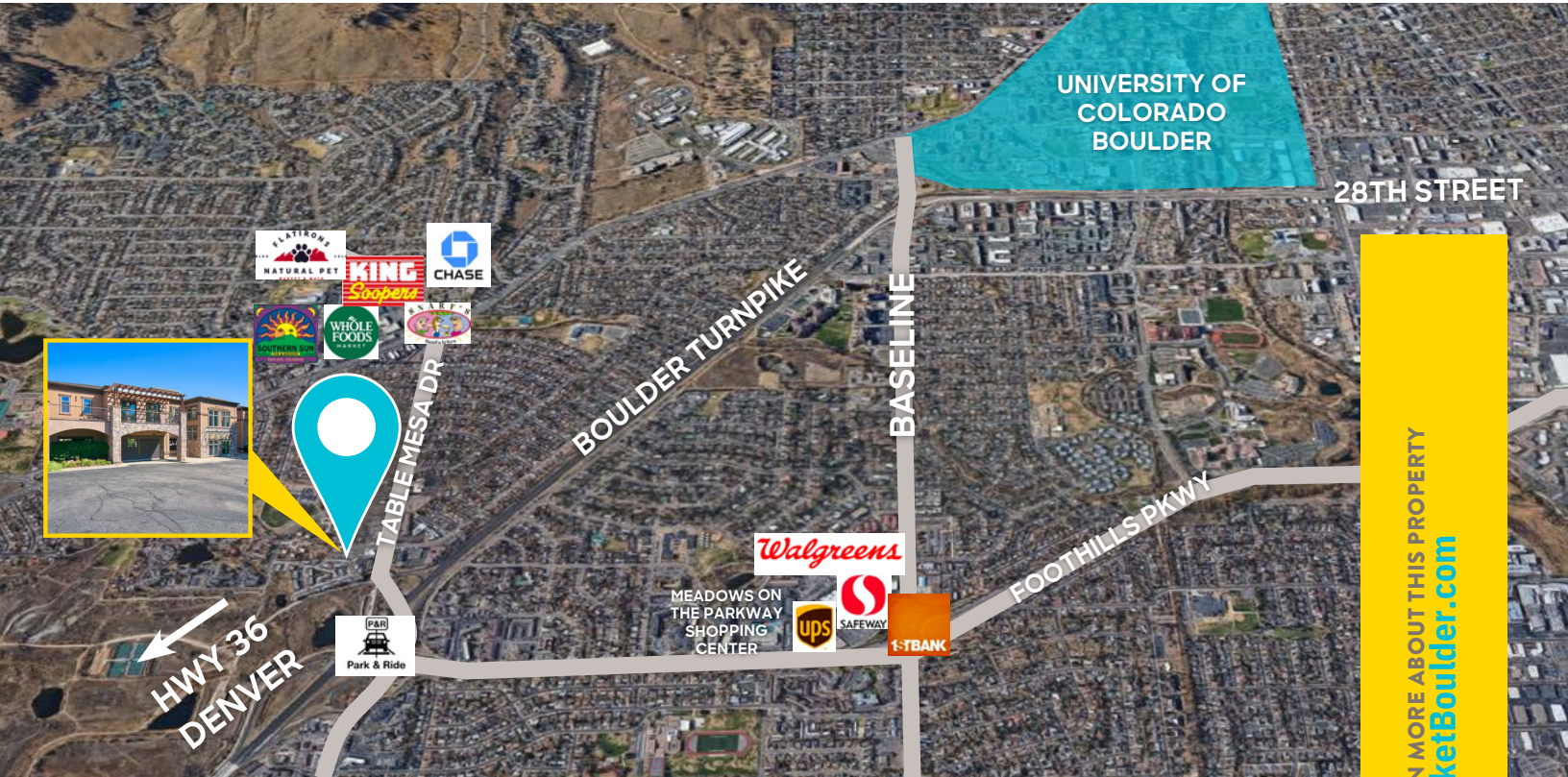
### UNIT 100



### UNIT 108



**CLICK HERE**  
for 108 virtual tour



**HEIDI SCHAMBER**

303 444 4344

Heidi@MarketRealEstate.com

**ANNIE LARNER**

303 444 1344

Annie@MarketRealEstate.com

LEARN MORE ABOUT THIS PROPERTY  
[MarketBoulder.com](http://MarketBoulder.com)

