

FOR LEASE

1,250 SF

\$20/SF NNN

2,400 SF

\$12/SF NNN

**623 W UNION BLVD
BETHLEHEM, PA 18018**



PRIME COMMERCIAL SPACES

Discover two exceptional lease opportunities at 623 Union Boulevard, located in a high-visibility, easily accessible area of Bethlehem ideal for professional, medical, or service-based users.

Both suites offer excellent visibility along busy Union Blvd, with convenient access to major routes and the Lehigh Valley's thriving business and retail corridors.

Whether you're looking for a turnkey professional space or a customizable office environment, 623 Union Blvd provides outstanding flexibility and value in one of Bethlehem's most desirable commercial locations.



kw
KELLERWILLIAMS
REAL ESTATE
Each office is individually owned and operated

James Balliet
President
O 610-435-1800
C 610-972-6808

James@JBPropertyGroup.com
JBPropertyGroup.com

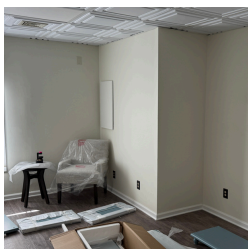
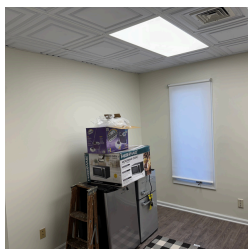
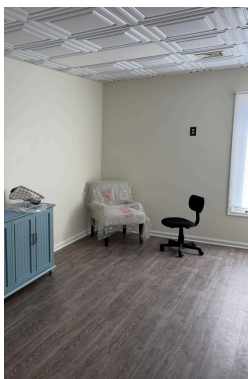
 **James Balliet**
PROPERTY GROUP

Michael G. Makhoul
Realtor
O 610-435-1800
C 610-390-3839

Mike@JBPropertyGroup.com
JBPropertyGroup.com

Suite 1B - 1,250 SF | \$20/SF

Beautifully renovated space ideal for a day spa, salon, esthetician, medical provider, counseling group, or non-profit organization. Modern finishes and a flexible layout create a welcoming environment ready for immediate use.



kw
KELLERWILLIAMS
REAL ESTATE
Each office is individually owned and operated

James Balliet
President
O 610-435-1800
C 610-972-6808
James@JBPropertyGroup.com
JBPropertyGroup.com

 **James Balliet**
PROPERTY GROUP

Michael G. Makhoul
Realtor
O 610-435-1800
C 610-390-3839
Mike@JBPropertyGroup.com
JBPropertyGroup.com

Suite 1-2 - 2,400 SF | \$12/SF

Spacious mixed-use office suite formerly occupied by a non-profit organization. The layout includes multiple private offices, meeting rooms, and open areas, easily adaptable to meet your unique operational needs.

