

Move-in ready spec suites available now!

— 5 Suites 1,884 RSF - 13,524 RSF —



# CRABTREE TERRACE

4509 Creedmoor Road, Raleigh, NC 27612





# Welcome — Home —

**Building Size:** 173,478 SF

**Parking:** Structured

**Property Management:** On-site

**First Floor:** Retail and restaurants

**Third Floor:** Fitness center



---

**When you make Crabtree Terrace your home, you place yourself within 10 minutes of many restaurants, hotels, shopping centers, walking trails/parks and more.**



**Click below to virtually tour the:**

[Lobby](#)

[Fitness Center](#)

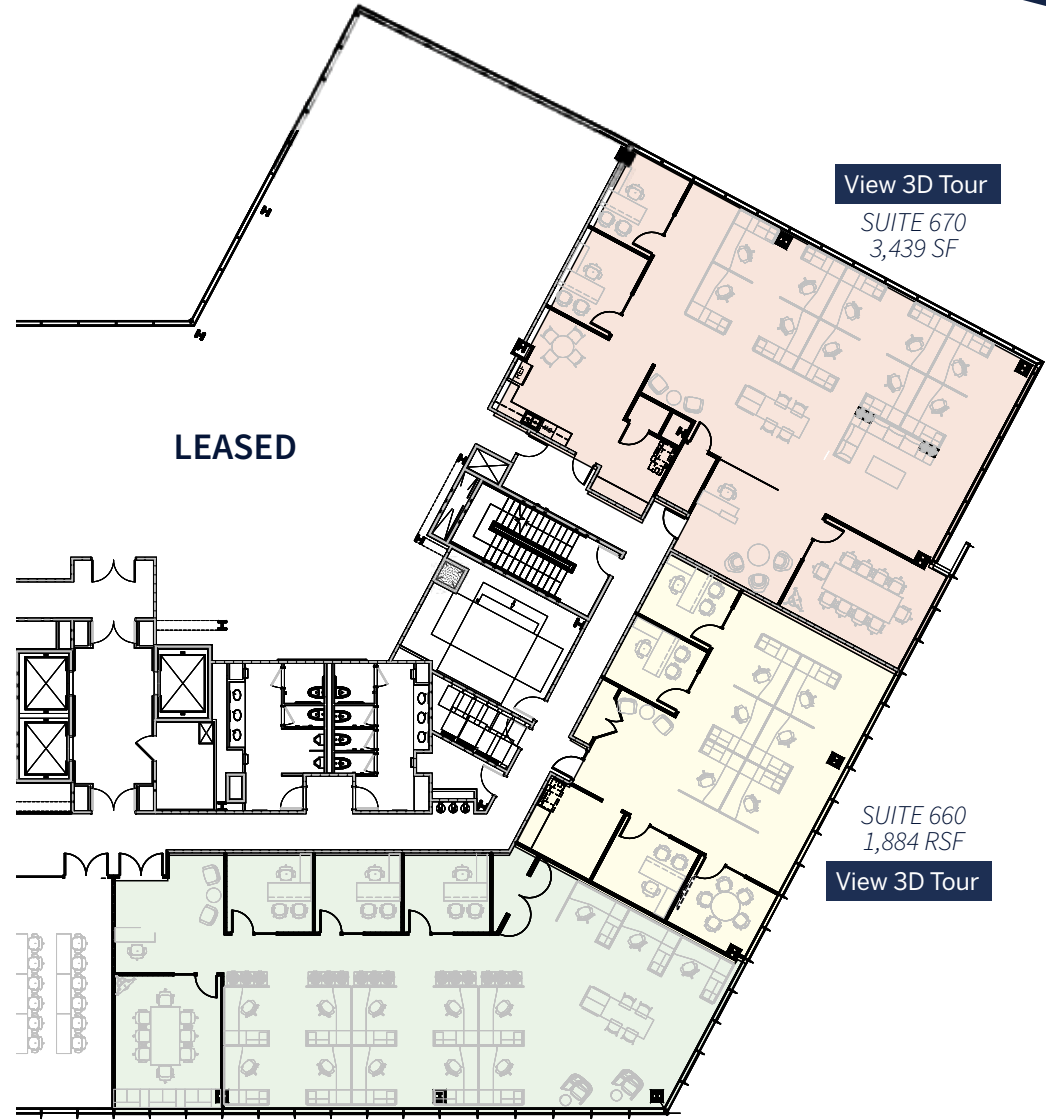
# 4<sup>th</sup> Floor

— Available Now —



# 6<sup>th</sup> Floor Spec Suites

Available Now



[View 3D Tour](#)

SUITE 670  
3,439 SF

LEASED

SUITE 660  
1,884 RSF

[View 3D Tour](#)

SUITE 650  
2,801 RSF

[View 3D Tour](#)

# Your Home Centrally Located

↑  
Downtown  
Raleigh



Foodcourt Fridays?

Afterwork happy hours?

With **185** stores and **38** restaurants on the premises, Crabtree Valley Mall is an unbeatable walkable amenity for Crabtree Terrace tenants.

## Crabtree Terrace

boasts a range of on-site amenities catering to all hours, including The Optimist for morning pick-me-ups, Perry's Steakhouse for a fine dining experience, and Meet Fresh for a refreshing boba tea fix.

On-Site Dining Amenities at Crabtree Terrace



# CRABTREE TERRACE

4509 Creedmoor Road, Raleigh, NC 27612



**Contact us today:**

[rduleasing@jll.com](mailto:rduleasing@jll.com)

919 851 9111

