

AVAILABLE FOR LEASE

241 E Elm Street



ONE UNIT REMAINING: 16,344 SF

Mike Borski, Jr., SIOR
mborskijr@flynnco.com
(215) 561-6565 x119

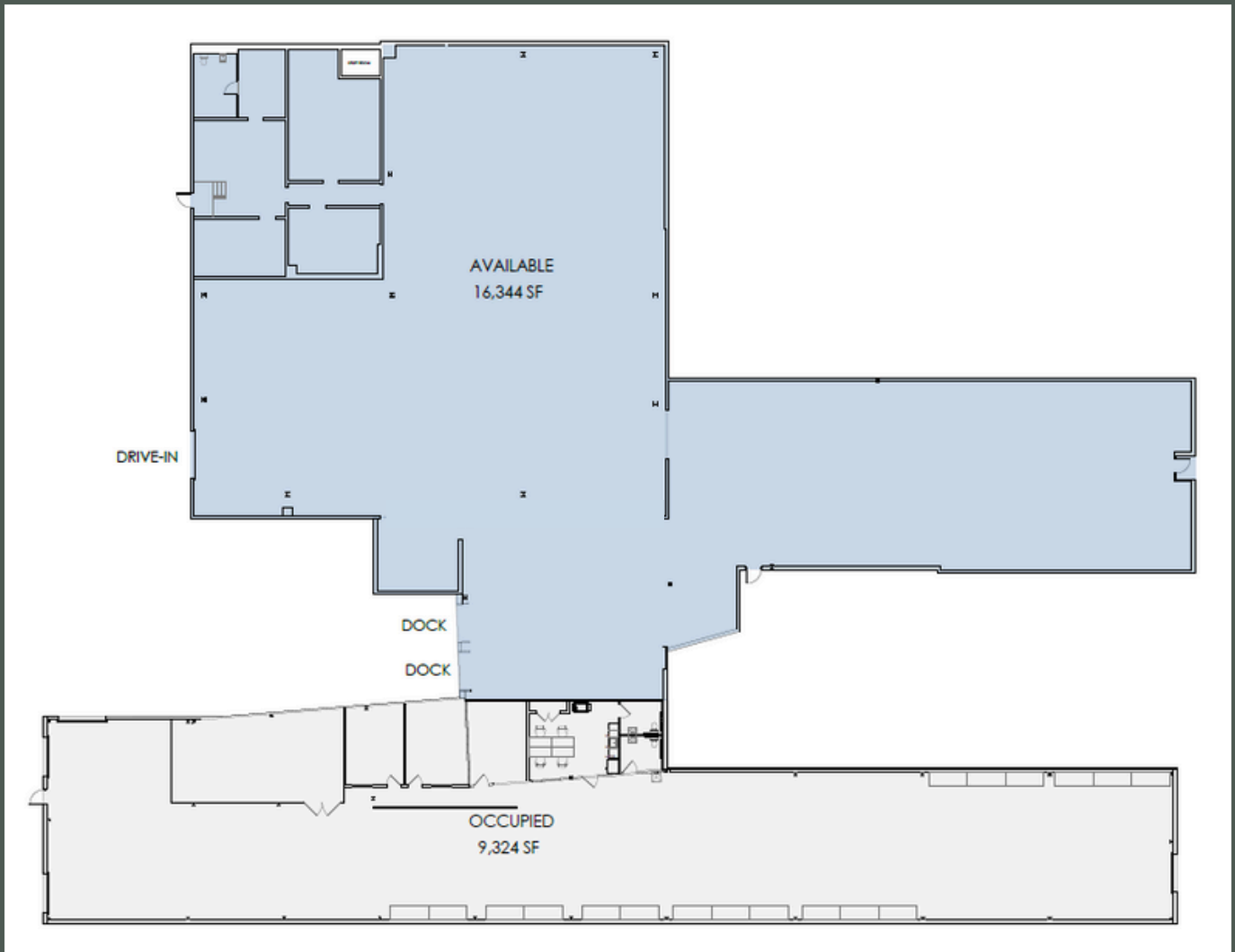
Mark Pawlowski
mpawlowski@flynnco.com
(215) 561-6565 x146

Ryan Pensabene
rpensabene@flynnco.com
(215) 561-6565 x116

The
Flynn
Company

Address	241 Elm Street Conshohocken, PA
Aggregate Building Area	+/- 25,667 SF
Infrastructure	New HVAC, Dock Infrastructure & LED Lighting
Loading	2 Loading Docks (building total 5) 1 Drive-In Door (building total 2)
Sewer & Water Service	Public
Sprinkler System	Dry
Electric	277/480v
Zoning	LI - Industrial

Floor Plan



Office

An adaptive reuse of a 1930's vintage manufacturing area, featuring a brand new fit out with exposed beams and vaulted ceilings



1,858 SF of exposed beam office



New ADA Restroom

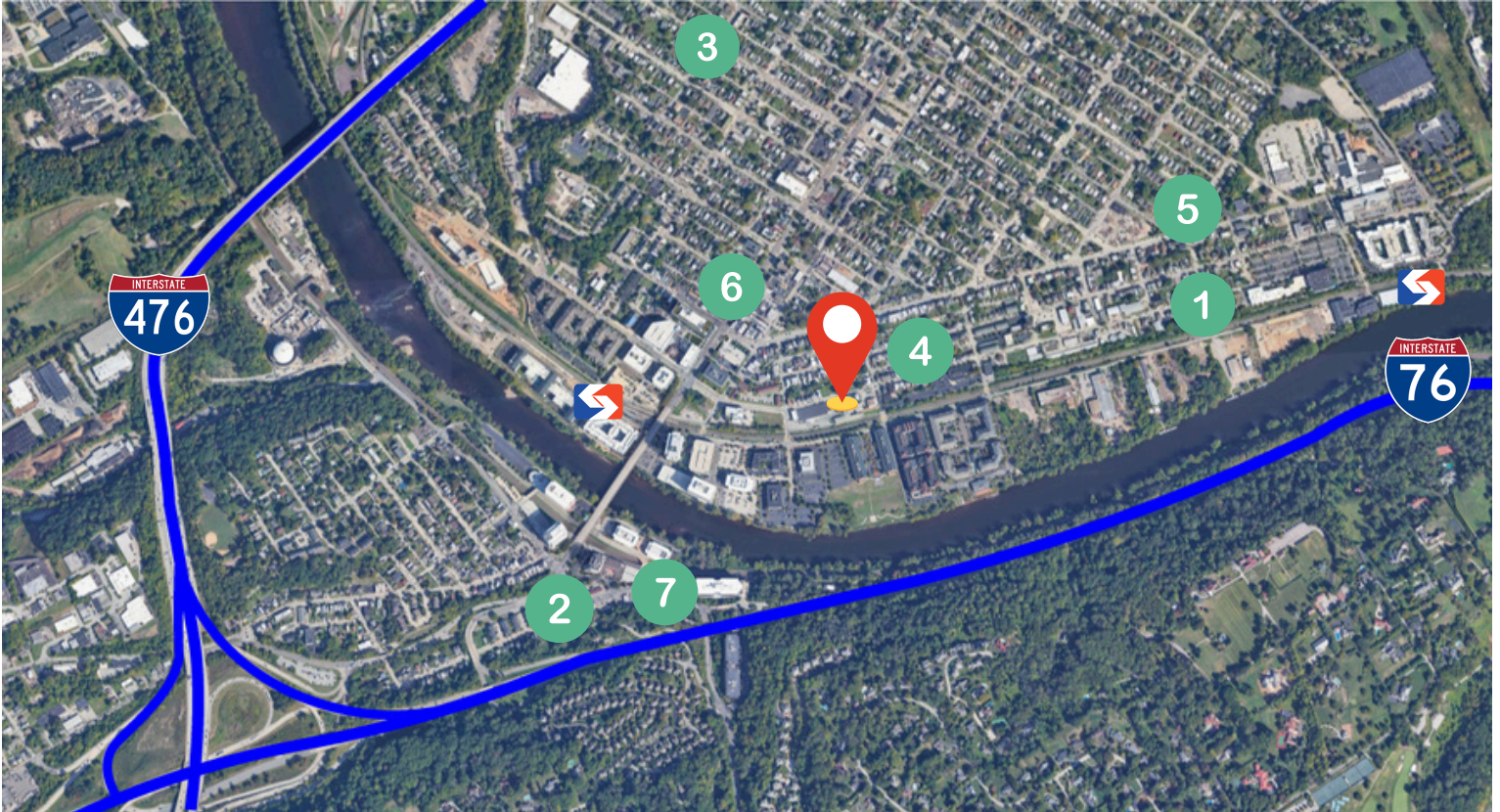


New HVAC



New LED Lighting and Chandelier

Location



Distance to:

I-76	0.9 miles
I-476	1.2 miles
Norristown Interchange	4.5 miles
Valley Forge Interchange	6.2 miles
U.S. 202	6.4 miles

1



5



2



6



3



4



7



Property Images



Contact Information

Mike Borski, Jr.

mborskijr@flynnco.com

(215) 561 - 6565 x119

Mark Pawlowski

mpawlowski@flynnco.com

(215) 561 - 6565 x146

Ryan Pensabene

rpensabene@flynnco.com

(215) 561 - 6565 x116

The Flynn Company

(215) 561 - 6565

1621 Wood Street | Philadelphia, PA 19103

The
Flynn
Company