

# MEDICAL OFFICE FOR LEASE

6335 MYRTLE AVENUE, LONG BEACH, CA 90806

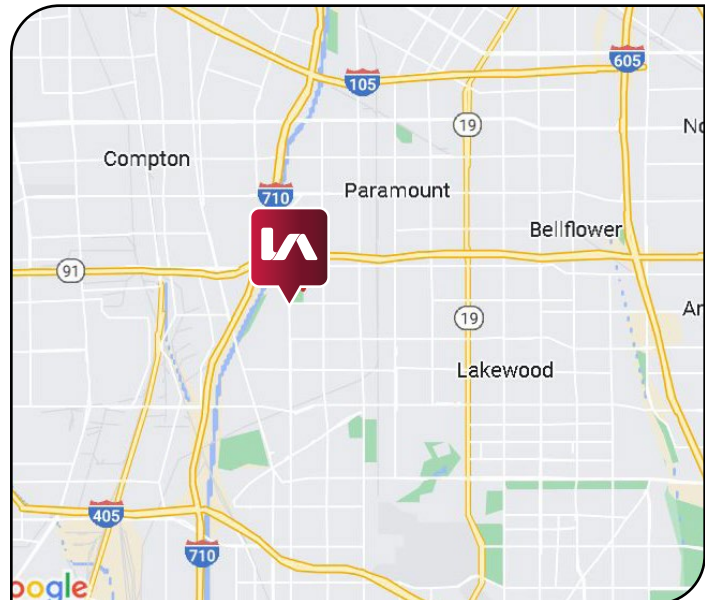


## PROPERTY FEATURES

**AVAILABLE:** ±1,293 SF Medical Suite

**RATE:** \$2.25 / SF Full Service Gross

- Free Surface Parking
- Newly Constructed Medical Buildout
- Community Central Location
- Located in the Ronald Arias Health Equity Center
- Minutes to 91 and 710 Freeways



[CLICK FOR VIRTUAL MATTERPORT TOUR](#)

FOR MORE INFORMATION, PLEASE CONTACT:

YOUR LOCAL MARKET EXPERTS

**Jeff Coburn, CCIM, SIOR**

Principal | DRE 01303169

PH: 562.354.2511 | E: jcoburn@leelalb.com

**Shaun McCullough, CCIM, SIOR**

Principal | DRE 01380928

PH: 562.354.2517 | E: smccullough@leelalb.com

# MEDICAL OFFICE FOR LEASE

6335 MYRTLE AVENUE, LONG BEACH, CA 90806



Copyright © Lee & Associates. All rights reserved. No part of this work may be reproduced or distributed without written permission of the copyright owner. The information contained in this report was gathered by Lee & Associates from sources believed to be reliable. Lee & Associates, however, makes no representation concerning the accuracy or completeness of such information and expressly disclaims any responsibility for any inaccuracy contained herein. 03.20.24

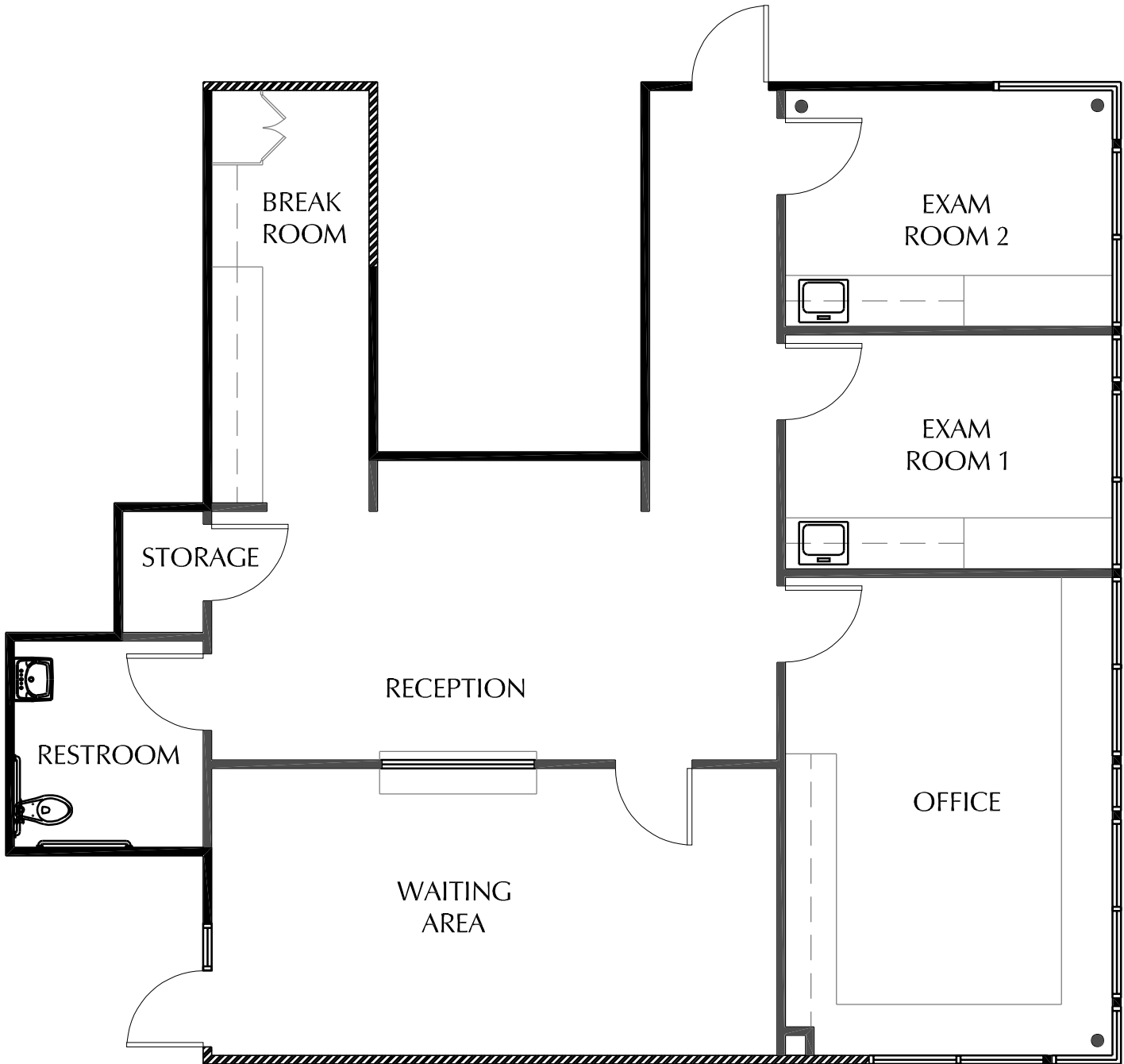
FOR MORE INFORMATION, PLEASE CONTACT: YOUR LOCAL MARKET EXPERTS

**Jeff Coburn, CCIM, SIOR**  
Principal | DRE 01303169  
PH: 562.354.2511 | E: jcoburn@leelalb.com

**Shaun McCullough, CCIM, SIOR**  
Principal | DRE 01380928  
PH: 562.354.2517 | E: smccullough@leelalb.com

# MEDICAL OFFICE FOR LEASE

6335 MYRTLE AVENUE, LONG BEACH, CA 90806



Copyright © Lee & Associates. All rights reserved. No part of this work may be reproduced or distributed without written permission of the copyright owner. The information contained in this report was gathered by Lee & Associates from sources believed to be reliable. Lee & Associates, however, makes no representation concerning the accuracy or completeness of such information and expressly disclaims any responsibility for any inaccuracy contained herein. 03.20.24

FOR MORE INFORMATION, PLEASE CONTACT:

YOUR LOCAL MARKET EXPERTS

**Jeff Coburn, CCIM, SIOR**

Principal | DRE 01303169

PH: 562.354.2511 | E: jcoburn@leelalb.com

**Shaun McCullough, CCIM, SIOR**

Principal | DRE 01380928

PH: 562.354.2517 | E: smccullough@leelalb.com