

**242 N WHITEOAK ST  
KUTZTOWN, PA 19530**

**FOR  
LEASE**



**\$10/SF NNN**

**9,888 SF OFFICE SPACE**

This great commercial space is 2 minutes from downtown Kutztown and the University, and has the potential for many different uses. Easy access from Rt. 737, Kutztown Bypass / 222 or anywhere in Borough of Kutztown. Ideal for a gym, office, co-working space, events company, church, etc. Multiple tenant capabilities. Multiple ADA restrooms. Approximately 9,800 square feet of total space. Open layout on both floors provides lots of daylight and large rooms, with adjacent offices. Ideal for meeting space, cubicles/workstations, sales or administrative teams, and more. Off street parking for approximately 18 cars with street parking available as well. Call for more information, or to see the available space.

**2 SPACES  
AVAILABLE  
4,900 SF  
EACH**



**KELLERWILLIAMS.**  
REAL ESTATE

Each office is individually owned and operated

**James Balliet**  
President  
O 610-435-1800  
C 610-972-6808

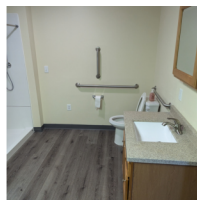
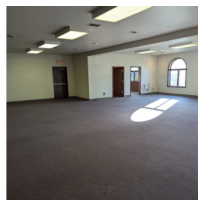
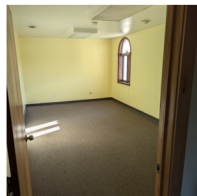
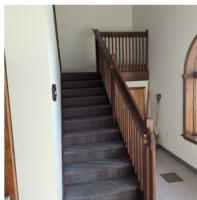
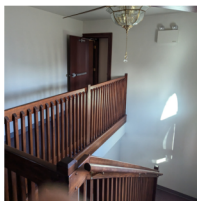


[James@JBPropertyGroup.com](mailto:James@JBPropertyGroup.com) [Doug@JBPropertyGroup.com](mailto:Doug@JBPropertyGroup.com)

**Douglas C. Sandlin**  
Realtor  
O 610-435-1800  
C 610-730-1660

[www.JBPropertyGroup.com](http://www.JBPropertyGroup.com)

# 242 N WHITEOAK ST KUTZTOWN, PA 19530



**kw**  
**KELLERWILLIAMS**  
REAL ESTATE  
Each office is individually owned and operated

James Balliet  
President  
O 610-435-1800  
C 610-972-6808  
James@JBPropertyGroup.com

**James Balliet**  
PROPERTY GROUP

Douglas C. Sandlin  
Realtor  
O 610-435-1800  
C 610-730-1660  
Doug@JBPropertyGroup.com

[www.JBPropertyGroup.com](http://www.JBPropertyGroup.com)