

CANTERBURY OFFICE SQUARE

8300 FAIR OAKS BLVD, CARMICHAEL, CA 95608

**NEW LEASE
INCENTIVES!**

FOR LEASE

For More Information:

GRETCHEN TOBIN

gretchentobin@proequityam.com

(916) 459-4378 | CA DRE #00937965

KEITH MELLOR

keithmellor@proequityam.com

(916) 330-4499 | CA DRE #01268501

CANTERBURY OFFICE SQUARE

8300 FAIR OAKS BLVD, CARMICHAEL, CA 95608

PROPERTY OVERVIEW

Canterbury Office Square offers a professional office environment in four buildings surrounded by mature landscaping. Abundant shaded parking is conveniently situated on two sides of the property. The property is well situated on Fair Oaks Blvd. offering a convenient location for businesses serving the suburban Carmichael community and/or business owners living nearby.

PROPERTY HIGHLIGHTS

- Lovely mature landscaping featuring a garden/river rock area centered between the four buildings
- Abundant parking two sides of the property
- Well maintained property with newly renovated common area restrooms
- Move in ready suites in a variety of sizes
- Quality ownership and professional management
- Conveniently located near a wide variety of housing and numerous restaurants and services

AVAILABILITY

| SPACES | SPACE SIZE |
|--------|------------|
| 204 | 942 RSF |
| 302 | 1,557 RSF |
| 303 | 1,134 RSF |
| 402 | 1,283 RSF |
| 407 | 1,084 RSF |
| 408 | 926 RSF |



GRETCHEN TOBIN

gretchentobin@proequityam.com
(916) 459-4378 | CA DRE #00937965

KEITH MELLOR

keithmellor@proequityam.com
(916) 330-4499 | CA DRE #01268501

© Copyright 2020. All rights reserved. Though the information above has been deemed to be from reliable sources, it is up to each interested party to conduct all proper due diligence, including but not limited to, any zoning or local governmental requirements, legal and tax consequence. ProEquity Real Estate Services cannot be responsible to any claim to the accuracy of any information contained herein. CA DRE #01870526



CANTERBURY OFFICE SQUARE

8300 FAIR OAKS BLVD, CARMICHAEL, CA 95608



GRETCHEN TOBIN
 gretchentobin@proequityam.com
 (916) 459-4378 | CA DRE #00937965

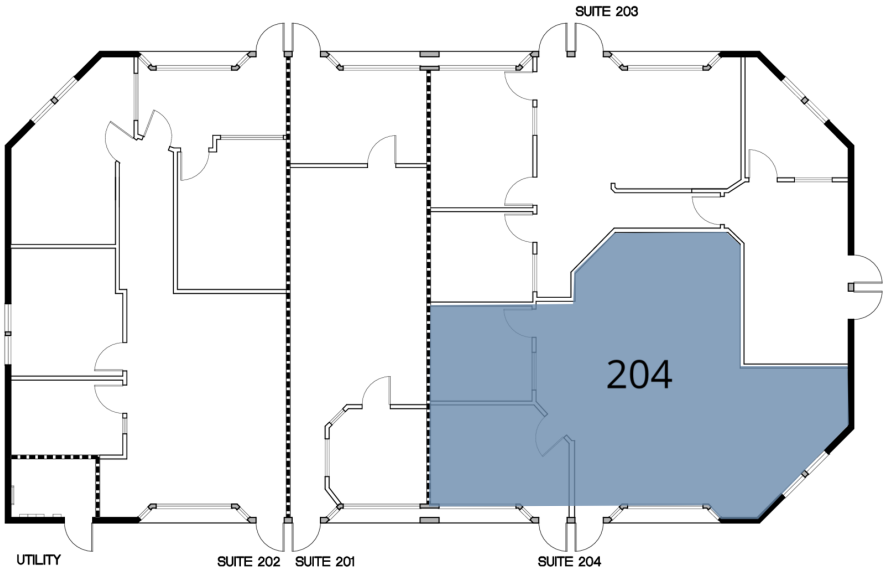
KEITH MELLOR
 keithmellor@proequityam.com
 (916) 330-4499 | CA DRE #01268501

© Copyright 2020. All rights reserved. Though the information above has been deemed to be from reliable sources, it is up to each interested party to conduct all proper due diligence, including but not limited to, any zoning or local governmental requirements, legal and tax consequence. ProEquity Real Estate Services cannot be responsible to any claim to the accuracy of any information contained herein. CA DRE #01870526

CANTERBURY OFFICE SQUARE

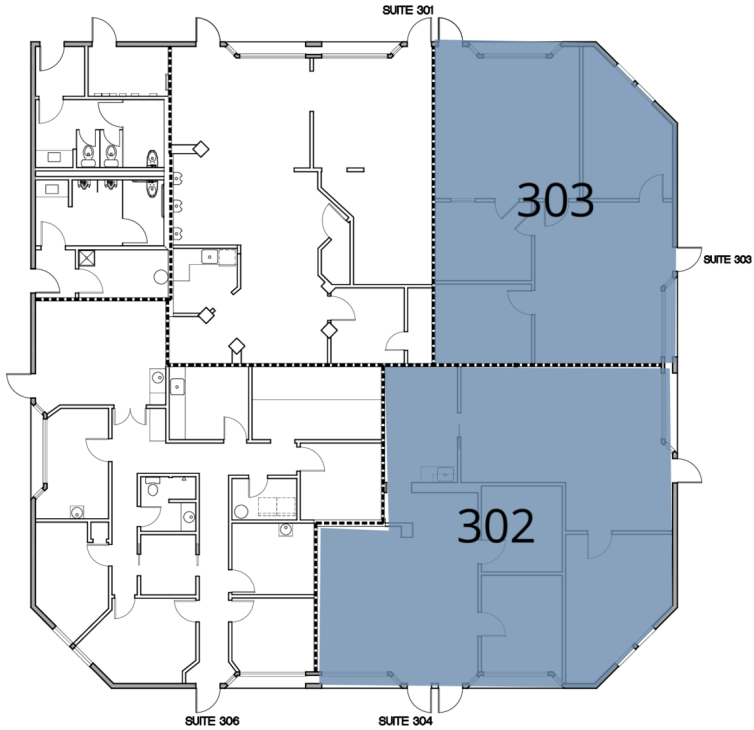
8300 FAIR OAKS BLVD, CARMICHAEL, CA 95608

AVAILABLE



BUILDING 200

| SUITE | TENANT | SIZE |
|-------|-----------|---------|
| 204 | Available | 942 RSF |



BUILDING 300

| SUITE | TENANT | SIZE |
|-------|-----------|-----------|
| 302 | Available | 1,557 RSF |
| 303 | Available | 1,134 RSF |

GRETCHEN TOBIN
 gretchentobin@proequityam.com
 (916) 459-4378 | CA DRE #00937965

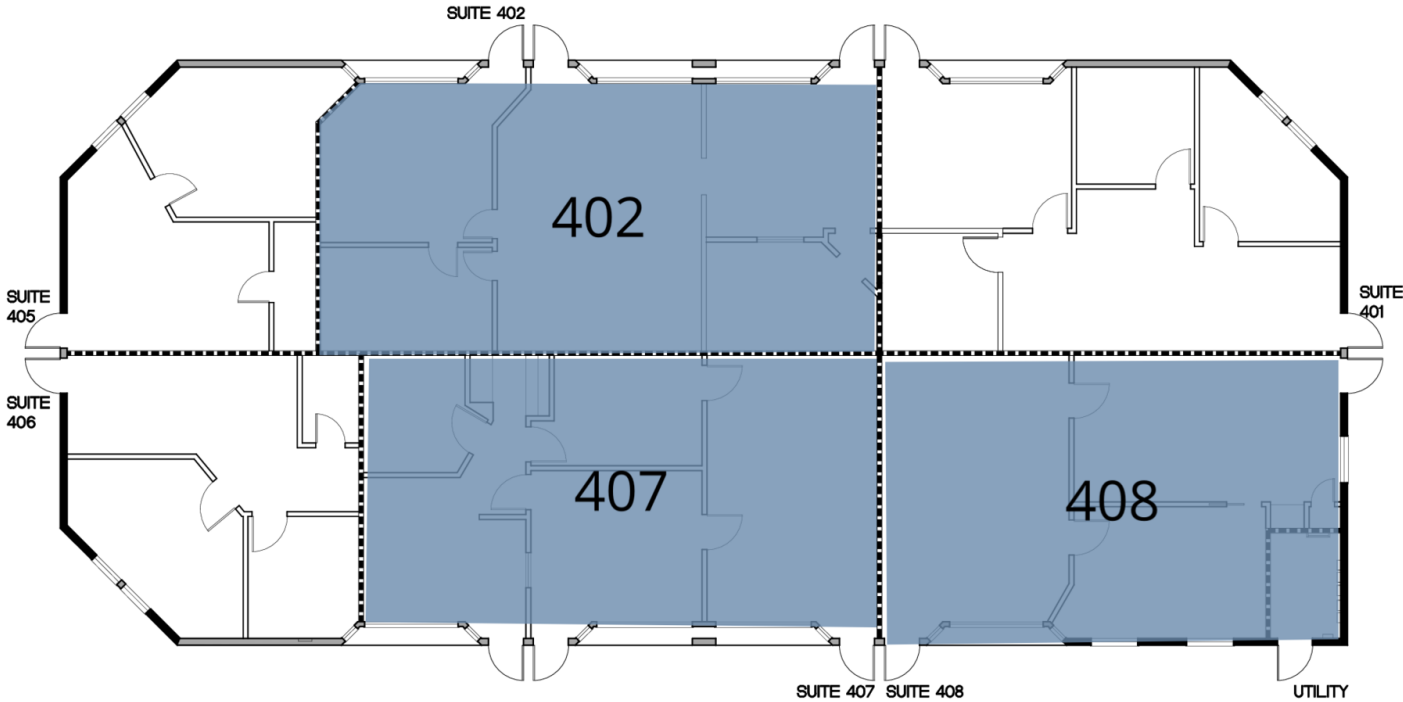
KEITH MELLOR
 keithmellor@proequityam.com
 (916) 330-4499 | CA DRE #01268501

© Copyright 2020. All rights reserved. Though the information above has been deemed to be from reliable sources, it is up to each interested party to conduct all proper due diligence, including but not limited to, any zoning or local governmental requirements, legal and tax consequence. ProEquity Real Estate Services cannot be responsible to any claim to the accuracy of any information contained herein. CA DRE #01870526



CANTERBURY OFFICE SQUARE

8300 FAIR OAKS BLVD, CARMICHAEL, CA 95608



BUILDING 400

| SUITE | TENANT | SIZE |
|-------|-----------|-----------|
| 402 | Available | 1,283 RSF |
| 407 | Available | 1,084 RSF |
| 408 | Available | 926 RSF |

GRETCHEN TOBIN
gretchentobin@proequityam.com
(916) 459-4378 | CA DRE #00937965

KEITH MELLOR
keithmellor@proequityam.com
(916) 330-4499 | CA DRE #01268501

© Copyright 2020. All rights reserved. Though the information above has been deemed to be from reliable sources, it is up to each interested party to conduct all proper due diligence, including but not limited to, any zoning or local governmental requirements, legal and tax consequence. ProEquity Real Estate Services cannot be responsible to any claim to the accuracy of any information contained herein. CA DRE #01870526

CANTERBURY OFFICE SQUARE

8300 FAIR OAKS BLVD, CARMICHAEL, CA 95608



GRETCHEN TOBIN
gretchentobin@proequityam.com
(916) 459-4378 | CA DRE #00937965

KEITH MELLOR
keithmellor@proequityam.com
(916) 330-4499 | CA DRE #01268501

© Copyright 2020. All rights reserved. Though the information above has been deemed to be from reliable sources, it is up to each interested party to conduct all proper due diligence, including but not limited to, any zoning or local governmental requirements, legal and tax consequence. ProEquity Real Estate Services cannot be responsible to any claim to the accuracy of any information contained herein. CA DRE #01870526