

EASTSIDE Costa Mesa

±900 SF Medical/Office
Available

181 E 18th St, Costa Mesa



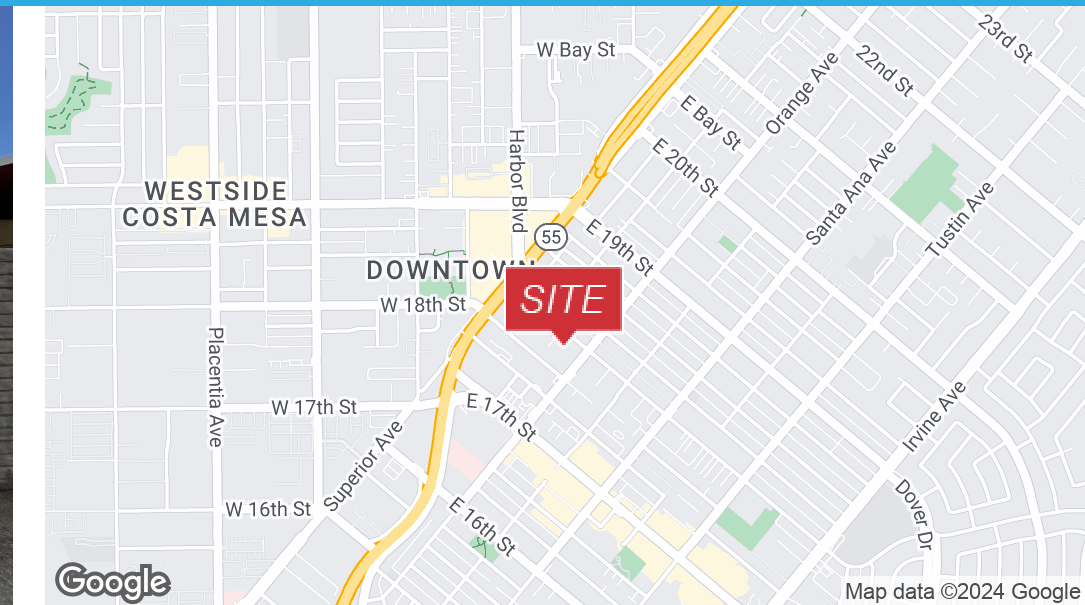
181 E 18th St

Costa Mesa, CA 92627

Leasing Brochure

Steve Liu
Executive Vice President
949.468.2385
sliu@naicapital.com
CA DRE #01323150

Andrew Batcheller
Vice President
949.468.2379
andrewbatcheller@naicapital.com
CA DRE #02097603



Offering Summary

Lease Rate:	\$3.50 SF/month (NNN)
Available SF:	900 SF
Lot Size:	22,177 SF
Parking Spaces:	25
Year Built:	1959
Zoning:	R2-HD
Market:	Newport Mesa
Submarket:	Eastside Costa Mesa

Location Overview

Located in beautiful Eastside Costa Mesa, 181 E 18th St is the perfect location for your practice. Costa Mesa, a vibrant city located in the heart of Orange County, California, has undergone a remarkable transformation since its incorporation in 1953. Once a semi-rural farming community, it has evolved into one of the region's most prominent commercial hubs, boasting a thriving economy centered around retail, commerce, and light manufacturing.

Property Highlights

- Prime EASTSIDE Costa Mesa
- 'Neighborhood' Location
- Abundant on-site Parking (7.2:1000)
- Ultra Affluent Demographics - High Income Area
- Less than 2 miles from Hoag Hospital

Andrew Batcheller

949.468.2379
andrewbatcheller@naicapital.com
CA DRE #02097603

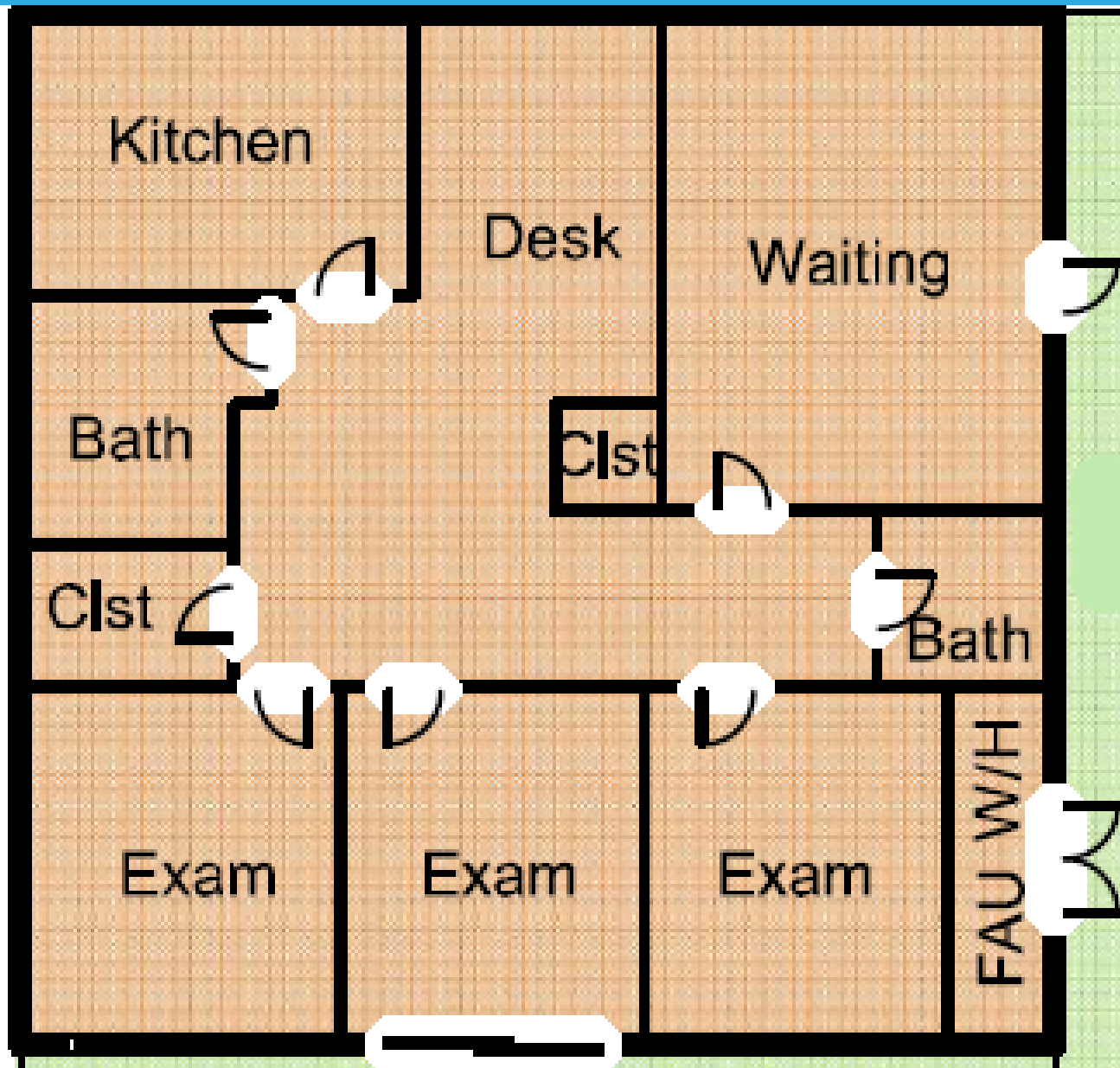
Steve Liu

949.468.2385
sliu@naicapital.com
CA DRE #01323150

No warranty, express or implied, is made as to the accuracy of the information contained herein. This information is submitted subject to errors, omissions, change of price, rental or other conditions, withdrawal without notice, and is subject to any special listing conditions imposed by our principals. Cooperating brokers, buyers, tenants and other parties who receive this document should not rely on it, but should use it as a starting point of analysis, and should independently confirm the accuracy of the information contained herein through a due diligence review of the books, records, files and documents that constitute reliable sources of the information described herein. Logos are for identification purposes only and may be trademarks of their respective companies. NAI Capital Commercial, Inc. CAL DRE Lic. #02130474

Unit D Floor Plan

(Not to Scale)



Andrew Batcheller
949.468.2379
andrewbatcheller@naicapital.com
CA DRE #02097603

Steve Liu
949.468.2385
sliu@naicapital.com
CA DRE #01323150

No warranty, express or implied, is made as to the accuracy of the information contained herein. This information is submitted subject to errors, omissions, change of price, rental or other conditions, withdrawal without notice, and is subject to any special listing conditions imposed by our principals. Cooperating brokers, buyers, tenants and other parties who receive this document should not rely on it, but should use it as a starting point of analysis, and should independently confirm the accuracy of the information contained herein through a due diligence review of the books, records, files and documents that constitute reliable sources of the information described herein. Logos are for identification purposes only and may be trademarks of their respective companies. NAI Capital Commercial, Inc. CAL DRE Lic. #02130474



Andrew Batcheller

949.468.2379

andrewbatcheller@naicapital.com

CA DRE #02097603

Steve Liu

949.468.2385

sliu@naicapital.com

CA DRE #01323150

No warranty, express or implied, is made as to the accuracy of the information contained herein. This information is submitted subject to errors, omissions, change of price, rental or other conditions, withdrawal without notice, and is subject to any special listing conditions imposed by our principals. Cooperating brokers, buyers, tenants and other parties who receive this document should not rely on it, but should use it as a starting point of analysis, and should independently confirm the accuracy of the information contained herein through a due diligence review of the books, records, files and documents that constitute reliable sources of the information described herein. Logos are for identification purposes only and may be trademarks of their respective companies. NAI Capital Commercial, Inc. CAL DRE Lic. #02130474

Area Demographics

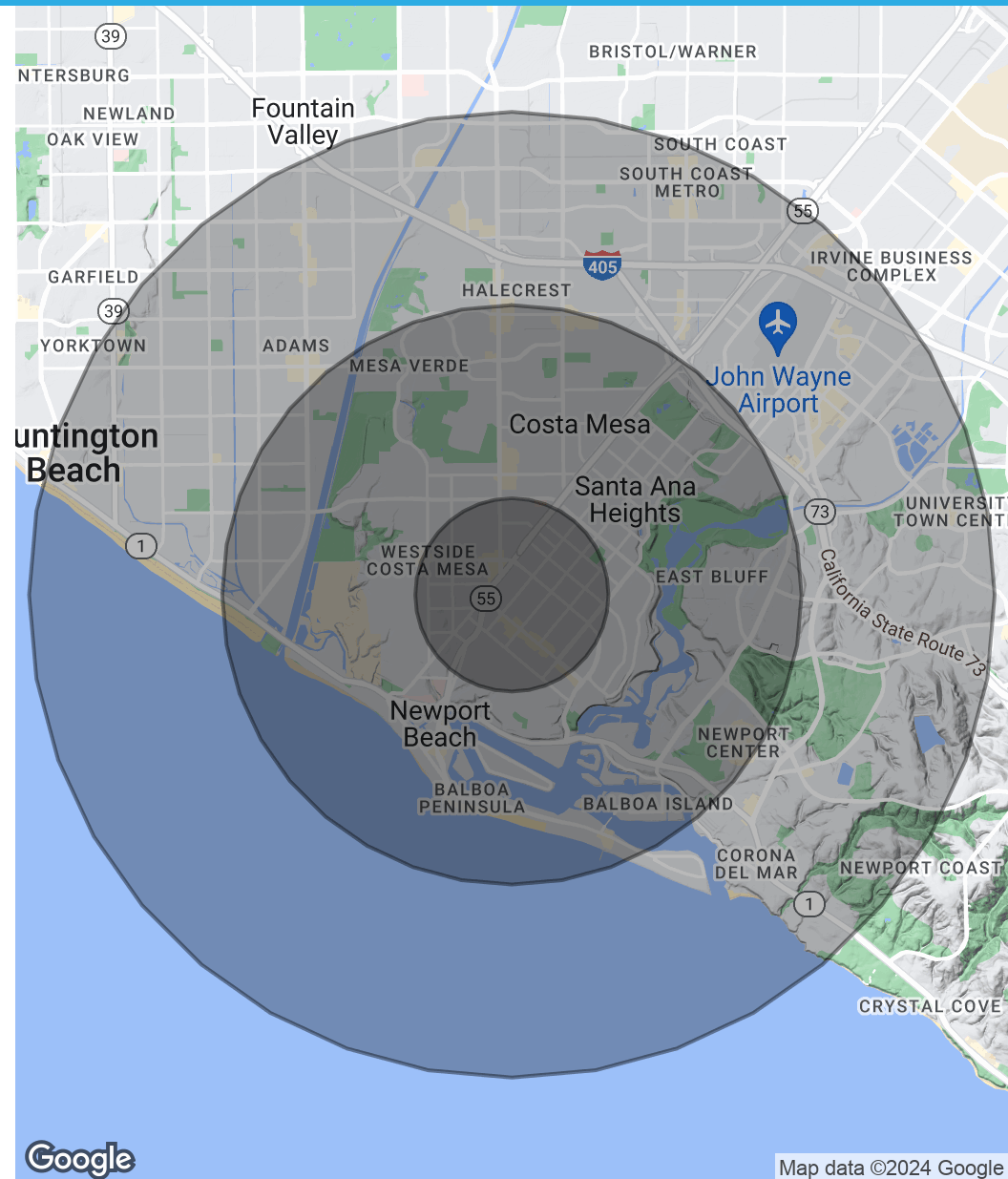
Population

	1 Mile	3 Miles	5 Miles
Total Population	33,850	151,767	318,974
Average Age	36.1	40.4	40.9
Average Age (Male)	35.5	40.0	40.5
Average Age (Female)	36.8	41.2	41.3

Households & Income

	1 Mile	3 Miles	5 Miles
Total Households	12,953	65,080	134,277
# of Persons per HH	2.6	2.3	2.4
Average HH Income	\$122,774	\$136,050	\$132,430
Average House Value	\$820,939	\$941,144	\$893,839

* Demographic data derived from 2020 ACS - US Census



Map data ©2024 Google

Andrew Batcheller

949.468.2379
andrewbatcheller@naicapital.com
CA DRE #02097603

Steve Liu

949.468.2385
sliu@naicapital.com
CA DRE #01323150

No warranty, express or implied, is made as to the accuracy of the information contained herein. This information is submitted subject to errors, omissions, change of price, rental or other conditions, withdrawal without notice, and is subject to any special listing conditions imposed by our principals. Cooperating brokers, buyers, tenants and other parties who receive this document should not rely on it, but should use it as a starting point of analysis, and should independently confirm the accuracy of the information contained herein through a due diligence review of the books, records, files and documents that constitute reliable sources of the information described herein. Logos are for identification purposes only and may be trademarks of their respective companies. NAI Capital Commercial, Inc. CAL DRE Lic. #02130474