

OFFICE PROPERTY FOR LEASE | 4,638 SF

18924

LAUREL PARK ROAD

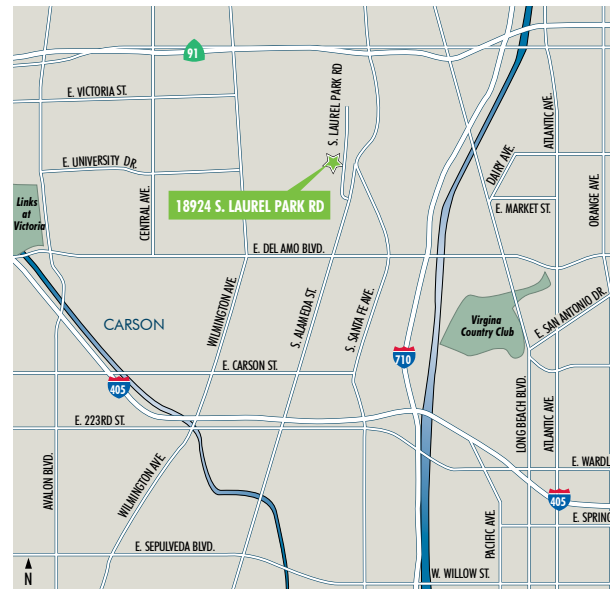
RANCHO DOMINGUEZ

CALIFORNIA, 90220



PROPERTY FEATURES

- + Highly Improved Rancho Dominguez Office - R/D Space
- + Year Built: 1978
- + Zoning: M2
- + Convenient Access to the 91, 710 and 405 Freeways
- + Close Proximity to Ports of Los Angeles and Long Beach



CONTACT US

Rick Mori

Lic. 01010087

First Vice President

+1 310 363 4990

rick.mori@cbre.com

www.cbre.com

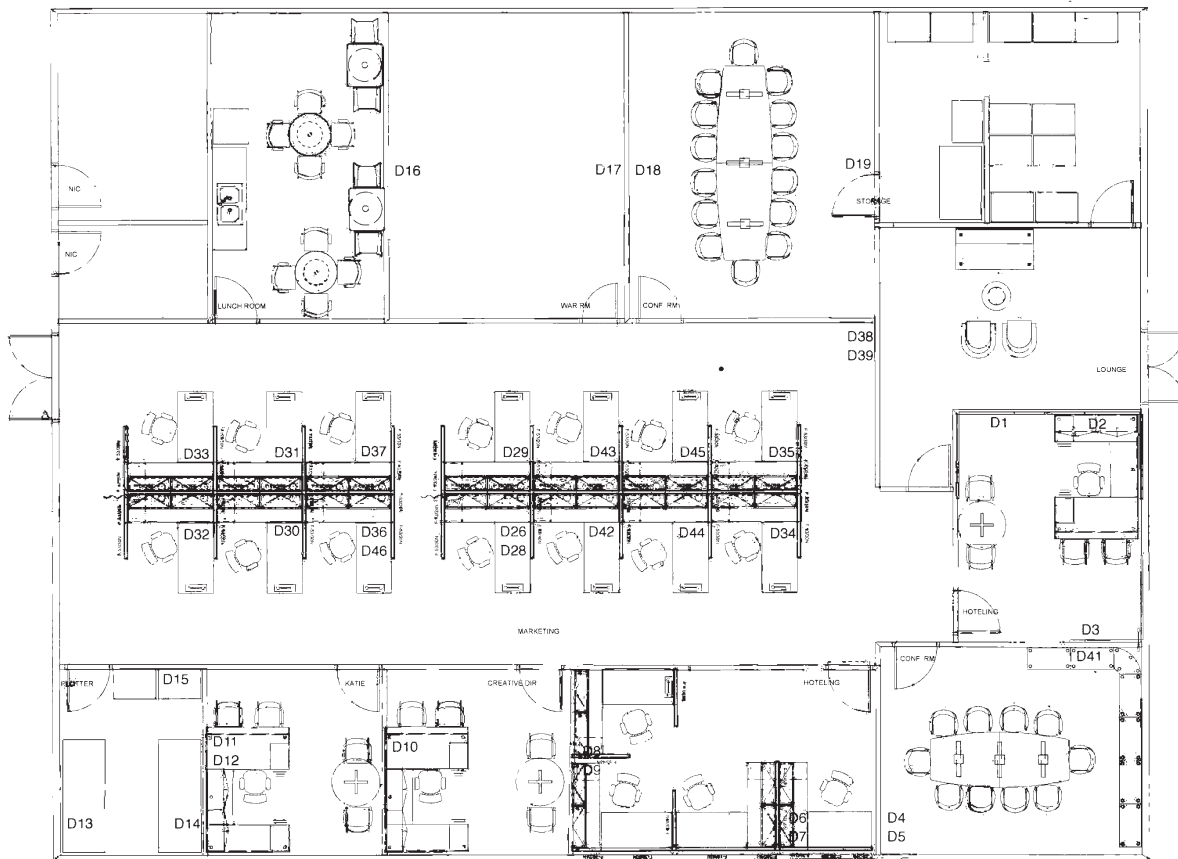
CBRE

OFFICE - R/D SPACE FOR LEASE
4,638 SQUARE FEET

18924
LAUREL PARK ROAD
Rancho Dominguez, CA 90220



FLOOR PLAN



FURNITURE NOT INCLUDED



CONTACT US

Rick Mori

Lic. 01010087

First Vice President

+1 310 363 4990

rick.mori@cbre.com

© 2016 CBRE, Inc. The information contained in this document has been obtained from sources believed reliable. While CBRE, Inc. does not doubt its accuracy, CBRE, Inc. has not verified it and makes no guarantee, warranty or representation about it. It is your responsibility to independently confirm its accuracy and completeness. Any projections, opinions, assumptions or estimates used are for example only and do not represent the current or future performance of the property. The value of this transaction to you depends on tax and other factors which should be evaluated by your tax, financial and legal advisors. You and your advisors should conduct a careful, independent investigation of the property to determine to your satisfaction the suitability of the property for your needs.

Photos herein are the property of their respective owners and use of these images without the express written consent of the owner is prohibited.

www.cbre.com

CBRE