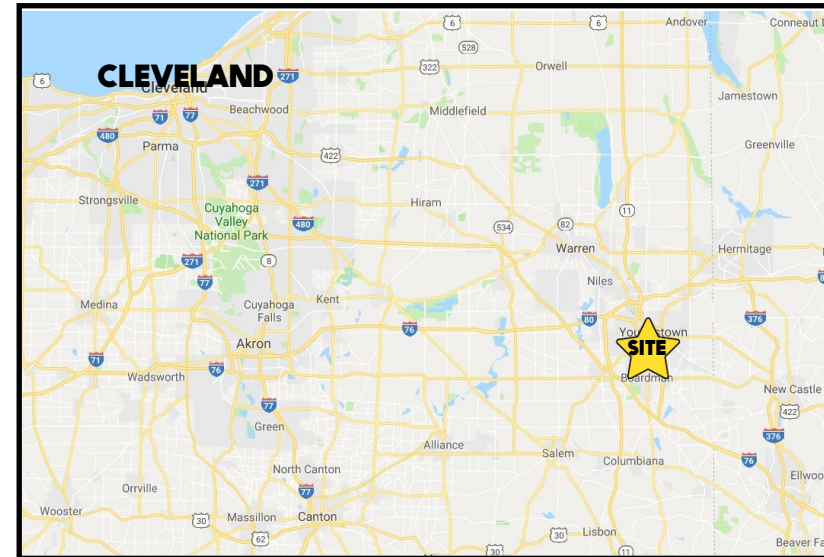


## LOCATION

4300 Market St, Boardman, OH 44512



## HIGHLIGHTS

- Completely renovated retail plaza
- Each unit has new flooring, lighting, ceiling, HVAC
- Ample parking
- Heavy daytime traffic
- Great signage on Market St (SR 7)

## TRAFFIC

Market St = 16,665 VPD

## CONTACT

**THERESA MORSE**

330.518.6082

[tmorse@platzrealtygroup.com](mailto:tmorse@platzrealtygroup.com)

Office: 330.757.4889 | Fax: 330.294.5622 | 3830 Starr Centre Dr, Suite 2, Canfield, OH 44406

[www.PLATZREALTYGROUP.com](http://www.PLATZREALTYGROUP.com)

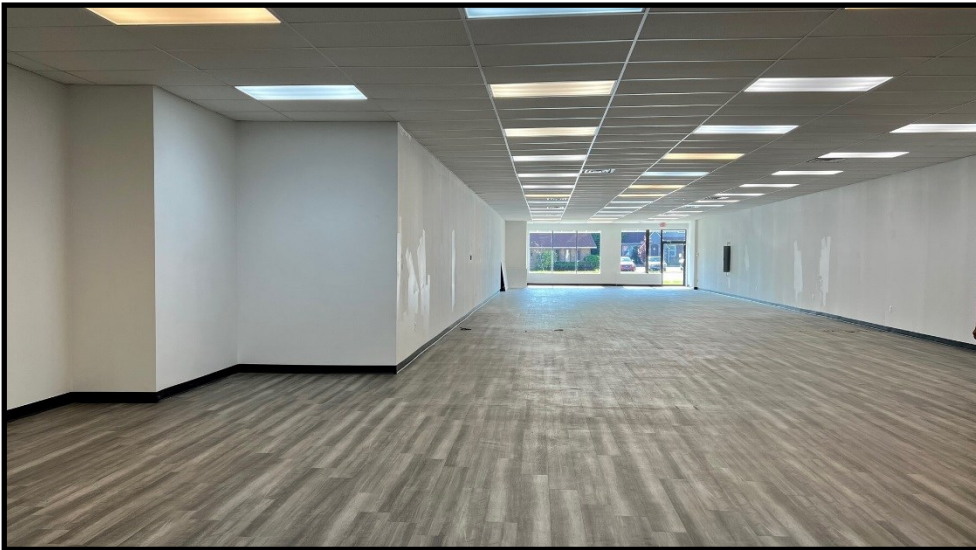




Office: 330.757.4889 | Fax: 330.294.5622 | 3830 Starr Centre Dr, Suite 2, Canfield, OH 44406

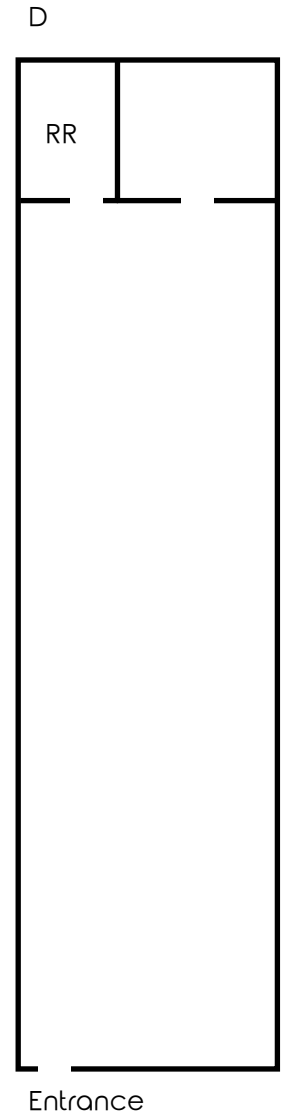
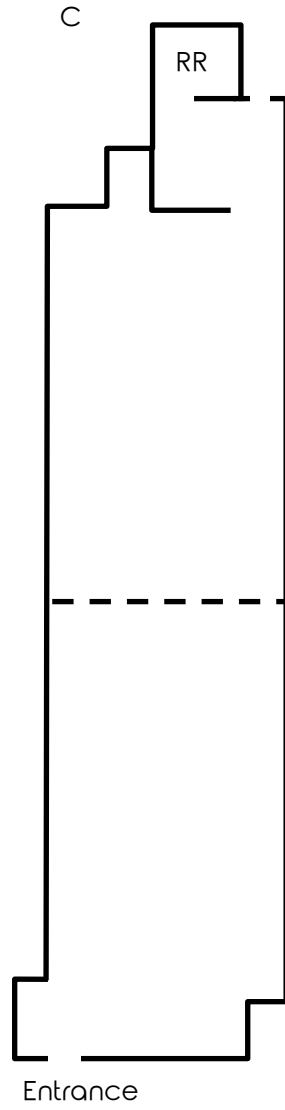
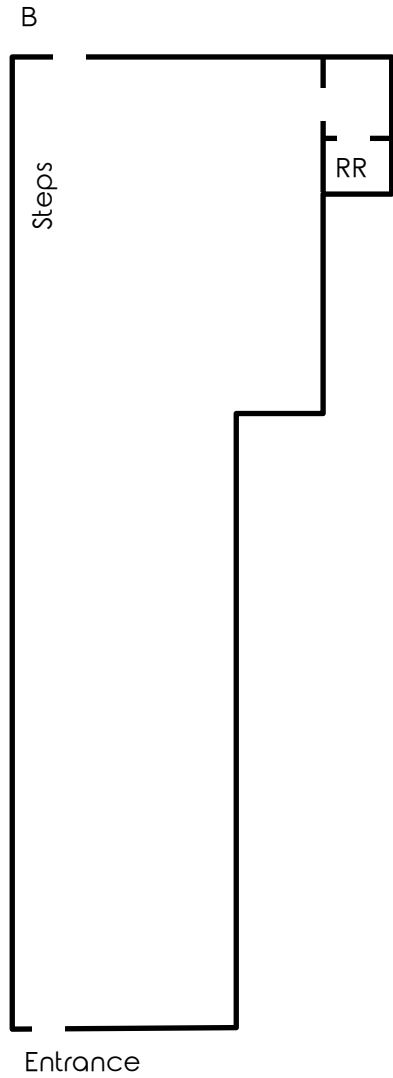
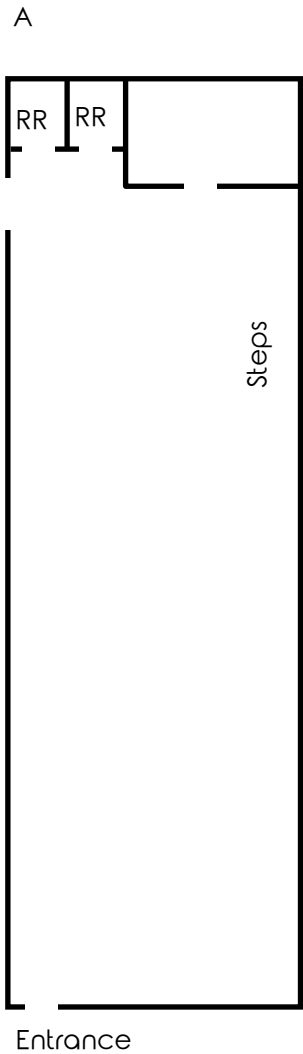
**[www.PLATZREALTYGROUP.com](http://www.PLATZREALTYGROUP.com)**





Office: 330.757.4889 | Fax: 330.294.5622 | 3830 Starr Centre Dr, Suite 2, Canfield, OH 44406

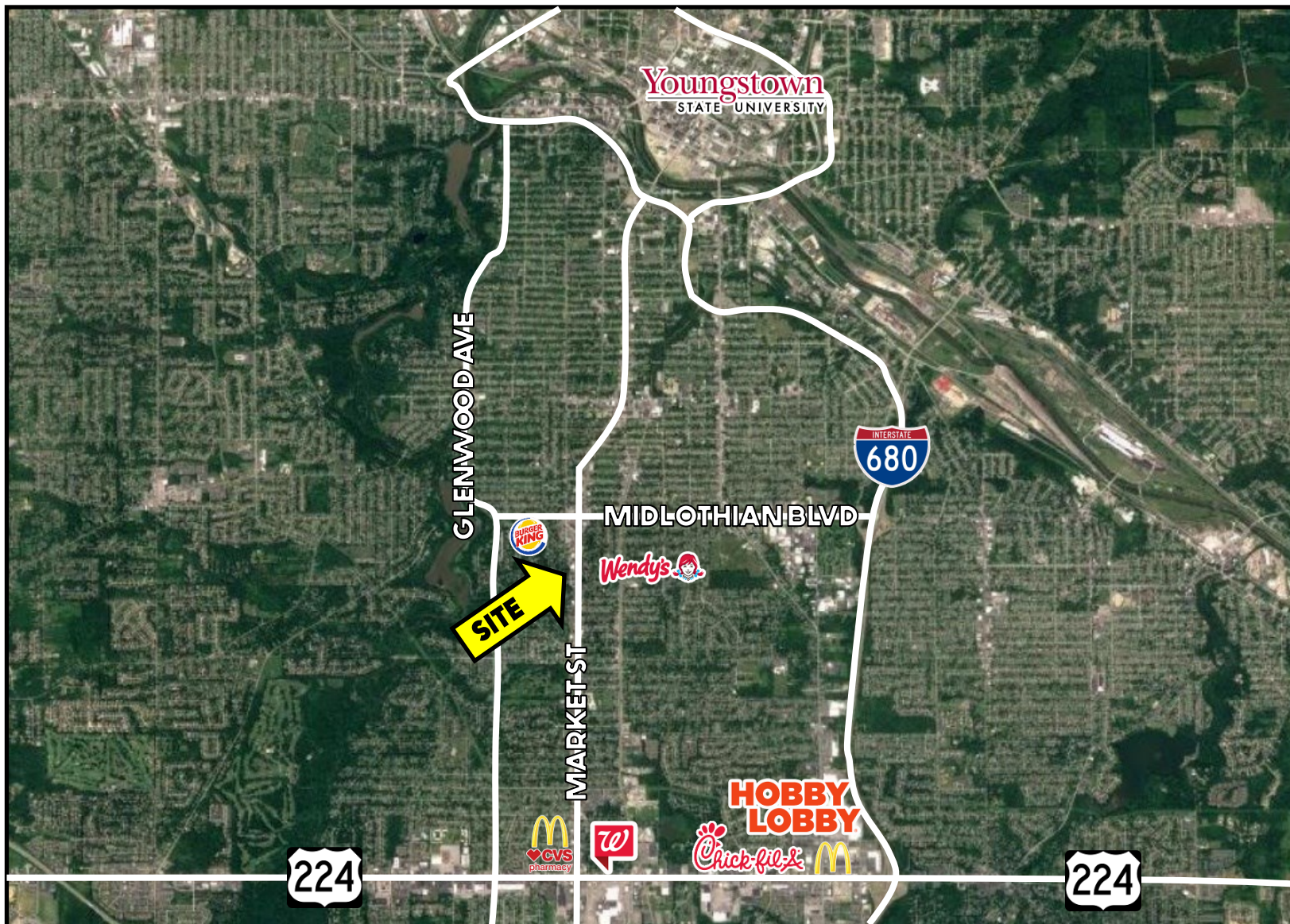
**[www.PLATZREALTYGROUP.com](http://www.PLATZREALTYGROUP.com)**



Office: 330.757.4889 | Fax: 330.294.5622 | 3830 Starr Centre Dr, Suite 2, Canfield, OH 44406

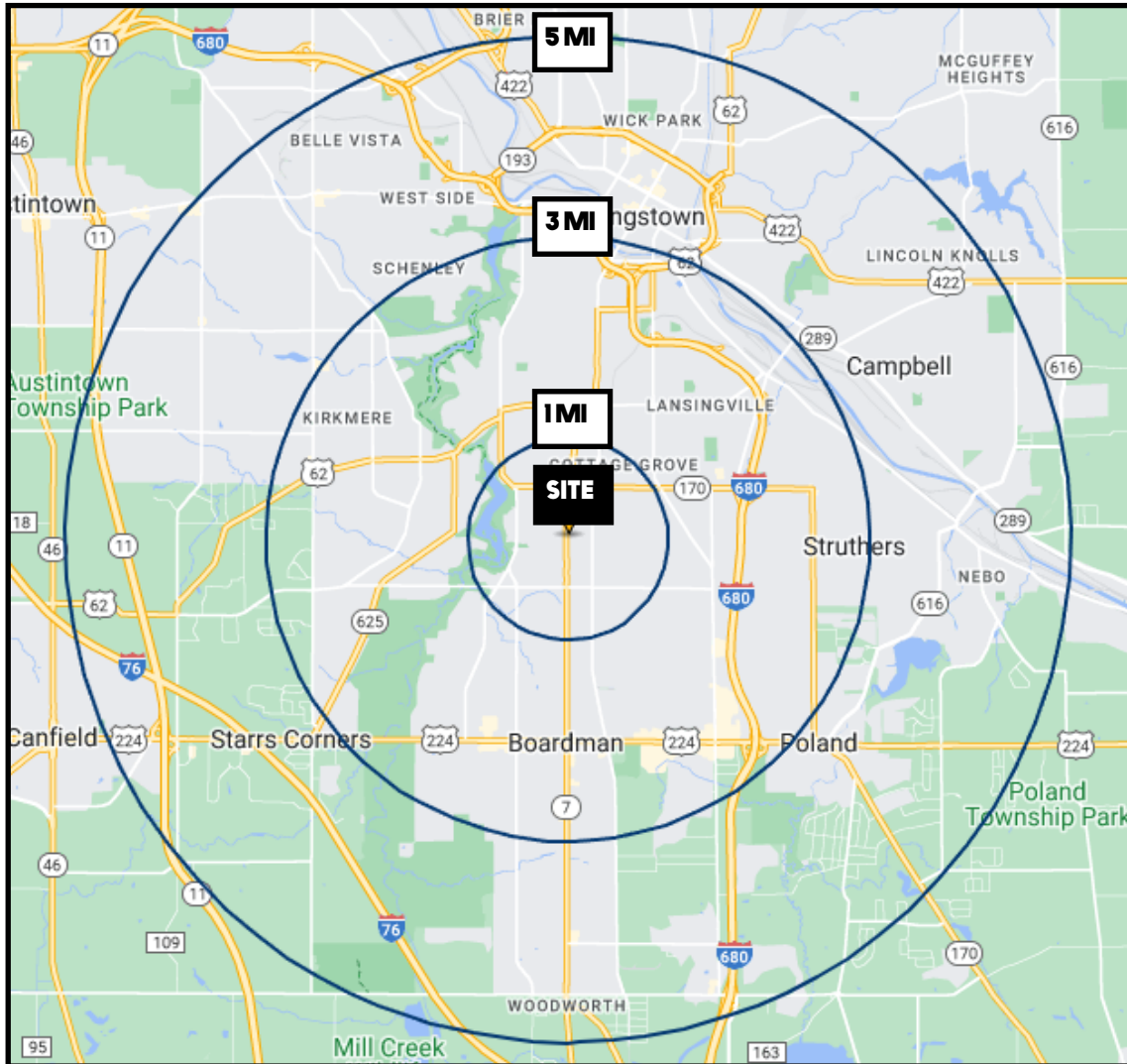
[www.PLATZREALTYGROUP.com](http://www.PLATZREALTYGROUP.com)





Office: 330.757.4889 | Fax: 330.294.5622 | 3830 Starr Centre Dr, Suite 2, Canfield, OH 44406

[www.PLATZREALTYGROUP.com](http://www.PLATZREALTYGROUP.com)



DEMOGRAPHICS	1 MI	3 MI	5 MI
<b>POPULATION</b>	11,665	65,714	149,081
<b>HOUSEHOLDS</b>	4,866	28,171	61,721
<b>MEDIAN AGE</b>	39	43	43
<b>AVERAGE HH INCOME</b>	\$55,370	\$58,289	\$59,958

**SITE INFORMATION**

<b>LOCATION</b>	Boardman Township Mahoning County
<b>PROPERTY TYPE</b>	Retail Plaza
<b>ZONING</b>	North Market Business
<b>SIZE</b>	A: 3,200 SF B: 3,500 SF C: 2,500 SF D: 1,700 SF (Salon)
<b>SIGNAGE</b>	Monument
<b>PARKING</b>	40 parking spaces
<b>RENT</b>	\$8.00/SF NNN Extra Charges: \$3.00/SF

Office: 330.757.4889 | Fax: 330.294.5622 | 3830 Starr Centre Dr, Suite 2, Canfield, OH 44406