



Office Condo **for lease or sale** in Channelside district

Grand Central Office West, located at 1120 E Kennedy, offers a premium experience at the heart of Tampa's vibrant Channel District. This meticulously designed mixed-use building hosts a variety of offices, restaurants, and 392 luxurious residential office/condos, reflecting the area's lively atmosphere.

Office tenants benefit from convenient amenities including on-site parking and ground floor dining options. Situated within easy reach of The University of Tampa and just a 15-minute drive from Tampa International Airport, the property enjoys a prime location overlooking Selmon Expressway and is less than a mile from Amalie Arena, home to the Tampa Bay Lightning hockey team.



Suite 228
2,219 sf



5/1,000 parking



4 private offices, open floor plan with kitchen



Windows that span floor to ceiling allowing great natural light into the space

Get more information

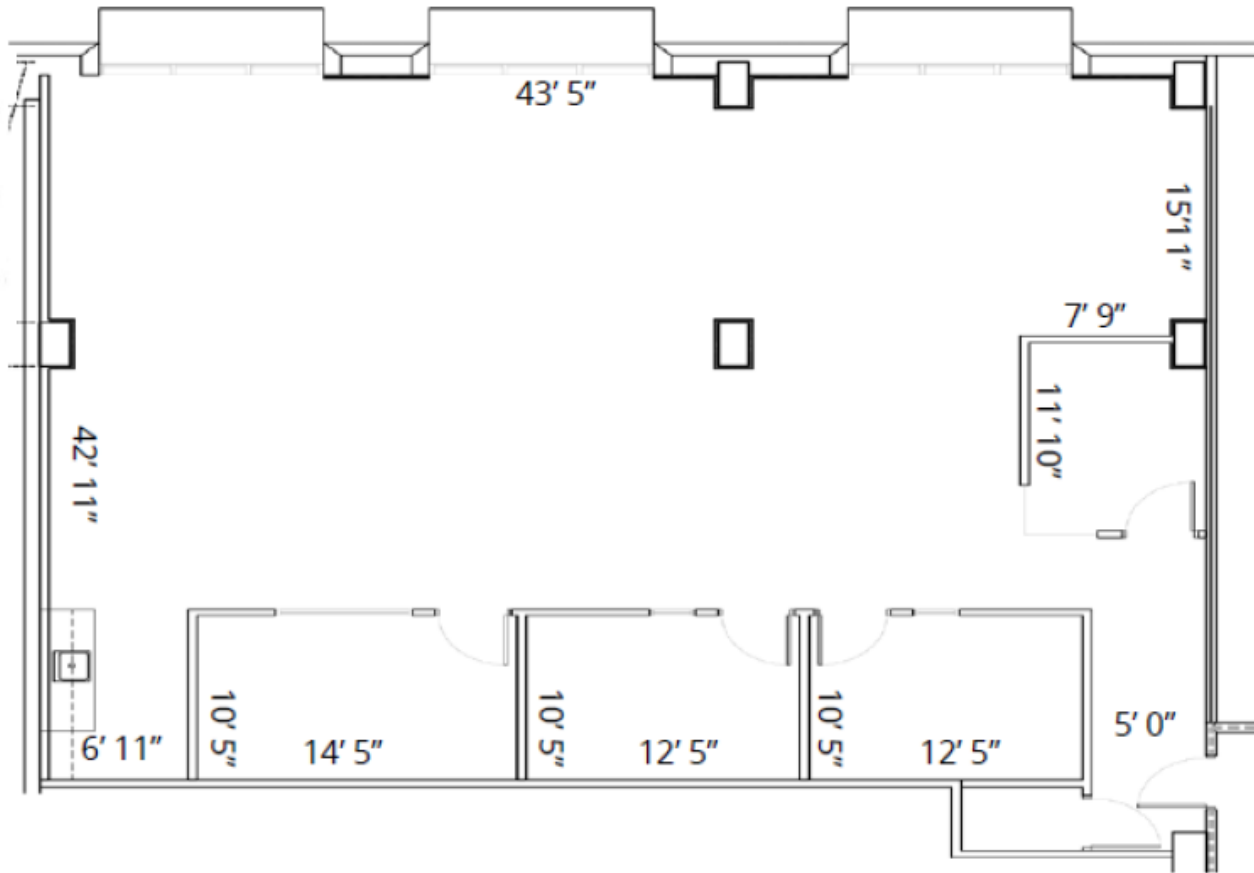
John Bencivenga, CCIM
+1 813 280 8993
john.bencivenga@avisonyoung.com

Kenneth E. Lane
+1 813 444 0623
ken.lane@avisonyoung.com

avisonyoung.com

Office Condo For Sale

1120 E. Kennedy Boulevard, Tampa, FL 33602



Get more information

John Bencivenga, CCIM
+1 813 280 8993
john.bencivenga@avisonyoung.com

Kenneth E. Lane
+1 813 444 0623
ken.lane@avisonyoung.com

avisonyoung.com