

**Howard
Hanna**
Premier Properties
By Barbara Alexander
COMMERCIAL REAL ESTATE

AVAILABLE
304-594-1519
www.move2wv.com



**Rural Property
For Sale**

**5 Groups of
Properties**

**Up to
603.57 Ac +/-**

\$1,506,685

No Zoning

No B&O Tax

**Will Sell
Separately**

Calhoun & Wirt Counties, Creston, WV



- Group 1 = 98 Ac +/-
- Group 2 = 118 Ac +/-
- Group 3 = 106 Ac +/-
- Group 4 = 201.82 Ac +/-
- Group 5 = 79.75 Ac +/-
- Total = 603.54 Ac +/-
- Calhoun County
- Wirt County

Looking for Hunting, Lumber or Farm Property, these family-owned properties are now available for sale. This package of vacant land consists of about 10 parcels that are assembled into 5 groups that can be purchased separately. Whether you want it for a hunting retreat, farm or to timber, this could be your own private hideaway! These 5 groups are located in same general area and the entire package contains about 603.54 acres +/-.
Contact the listing agents for more details.



List of Properties

Thank you for interest in our listings. Attached is a general overview of about 603.57+/- acres of vacant land that is located in Calhoun and Wirt Counties in West Virginia.

The subject property consists of 10 parcels of land identified as follows:

Calhoun County, Lee District, Map 5, Parcel 12 (98 acres)

Calhoun County, Lee District, Map 5, Parcel 10 (118 acres)

Calhoun County, Lee District, Map 5, Parcel 22 (91 acres)

Calhoun County, Lee District, Map 5, Parcel 18 (15 acres)

Wirt County, Spring Creek District, Map 3, Parcel 31 (1 acre)

Calhoun County, Lee District, Map 1, Parcel 1 (5.5 acres)

Calhoun County, Lee District, Map 1, Parcel 2 (6.32 acres)

Calhoun County, Lee District, Map 13, Parcel 14 (189 acres)

Wirt County, Spring Creek District, Map 8, Parcel 88 (79.75 acres)

Calhoun County, Lee District, No Map, Parcel 39.35 (included in Parcel 88)

List of Properties

Group 1	7-3-5-12	98.00 acres	\$ 98,000
Group 2	7-3-5-10	118.00 acres	\$ 295,000
Group 3	7-3-5-22 7-3-5-18	91.00 acres 15.00 acres	\$ 265,000
Group 4	7-3-1-1 7-3-1-2 7-4-13-14 53-7-3-31	5.50 acres 6.32 acres 189.00 acres 1.00 acre	\$ 569,560
Group 5	7-3-1-39.35 53-7-8-88	<u>79.75 acres</u>	<u>\$ 279,125</u>
Total Package		603.57 acres	\$1,506,685

Parcel 12, Off West Fork Rd, Creston, WV 26141



Group 1: 7-3-5-12 (98 Acres +/-)

Parcel 12, Off West Fork Rd, Creston, WV 26141



Group 1: 7-3-5-12 (98 Acres +/-)

Parcel 10, Little Rowels Run Rd, Creston, WV 26141



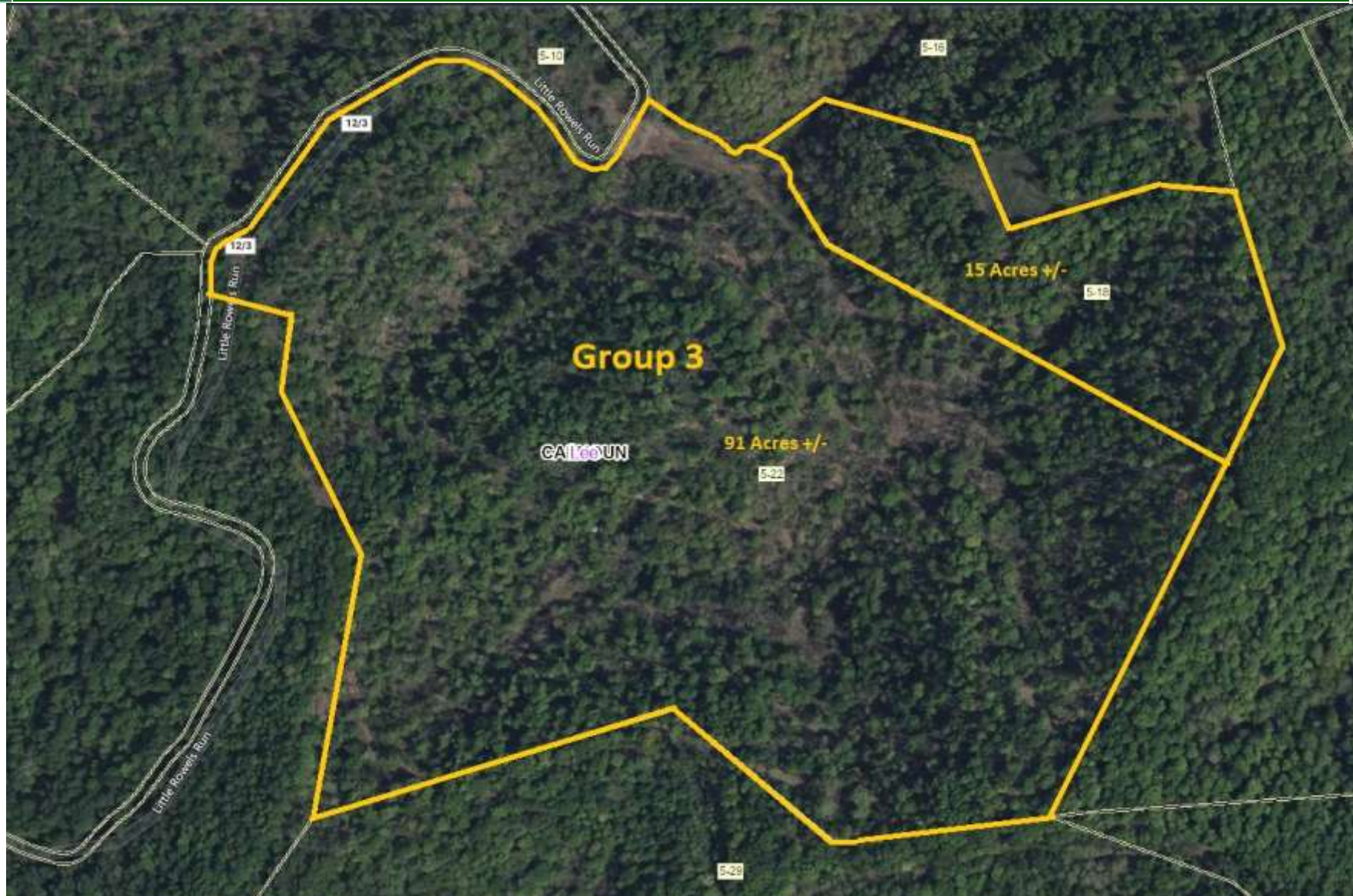
Group 2: 7-3-5-10 (118 Acres +/-)

Parcel 10, Little Rowels Run Rd, Creston, WV 26141



Group 2: 7-3-5-10 (118 Acres +/-)

Parcels 22 & 18, Little Rowels Run Rd, Creston, WV 26141



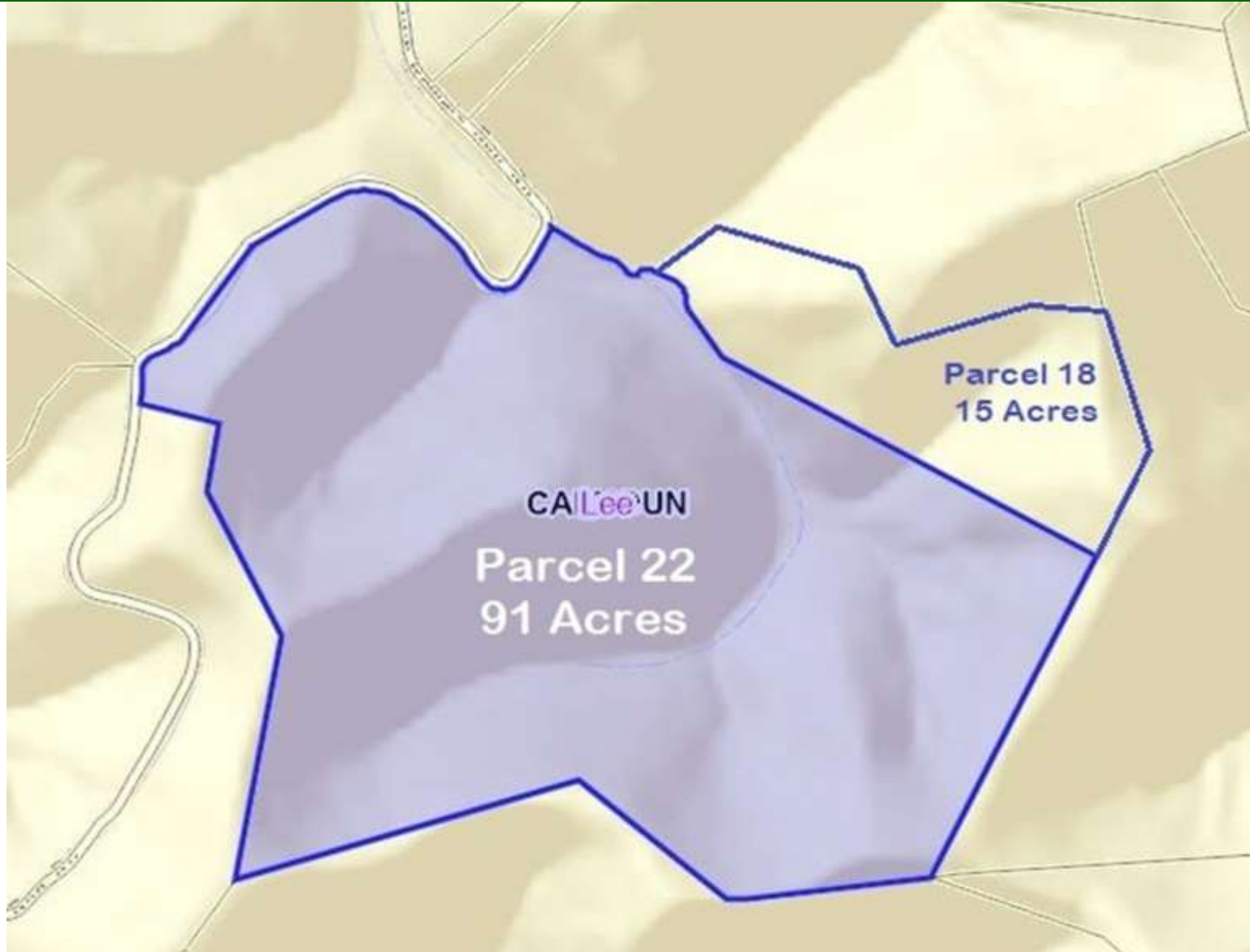
Group 3: 7-3-5-22 & 18 (106 Acres +/-)

Parcels 22 & 18, Little Rowels Run Rd, Creston, WV 26141



Group 3: 7-3-5-22 & 18 (106 Acres +/-)

Parcels 22 & 18, Little Rowels Run Rd, Creston, WV 26141



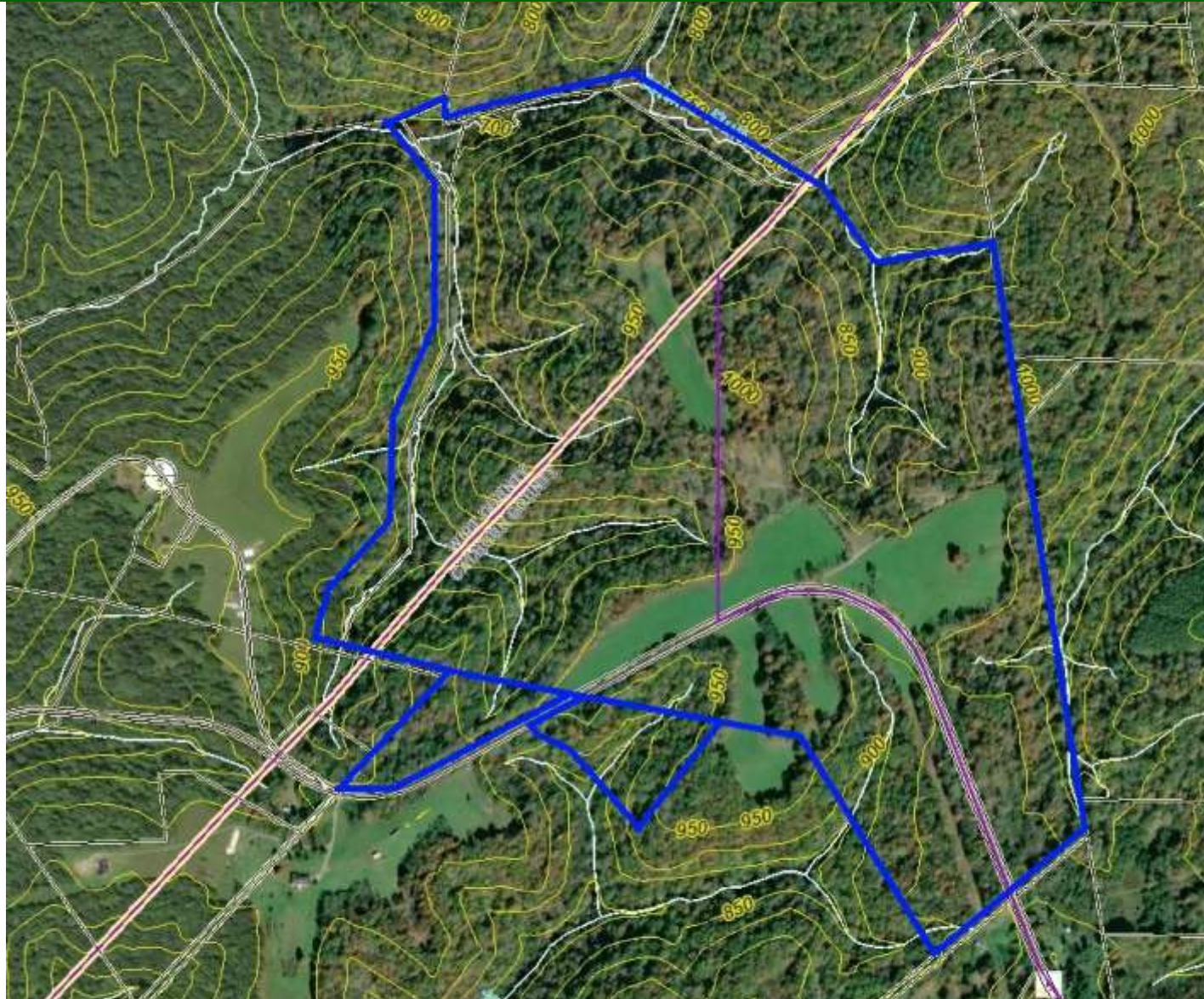
Group 3: 7-3-5-22 & 18 (106 Acres +/-)

Parcel 14+, West Little Kanawha Hwy, Creston, WV 26141



Group 4: 7-3-1-1&2; 7-4-13-14; 53-7-3-31 (201.82 Acres +/-)

Parcel 14+, West Little Kanawha Hwy, Creston, WV 26141



Group 4: 7-3-1-1&2; 7-4-13-14; 53-7-3-31 (201.82 Acres +/-)

Parcel 88, Little Creek Rd, Creston, WV 26141



Group 5: 53-7-8-88, 7-3-1-39.35 (79.75 Acres +/-)

Parcel 88, Little Creek Rd, Creston, WV 26141



Group 5: 53-7-8-88, 7-3-1-39.35 (79.75 Acres +/-)

Groups 1, 2 & 3



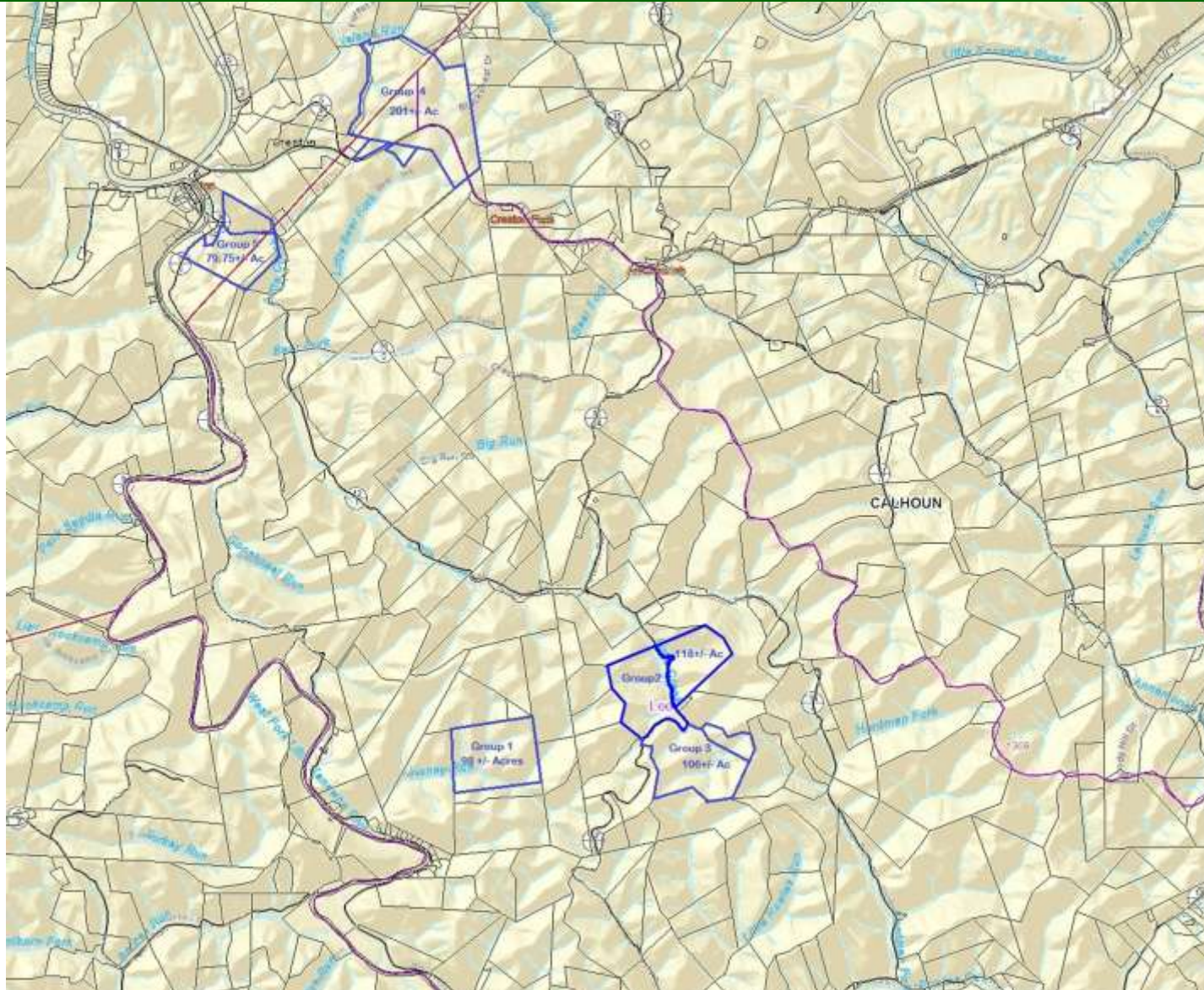
322 Acres +/-

Group 4: 21.82 Acres +/-



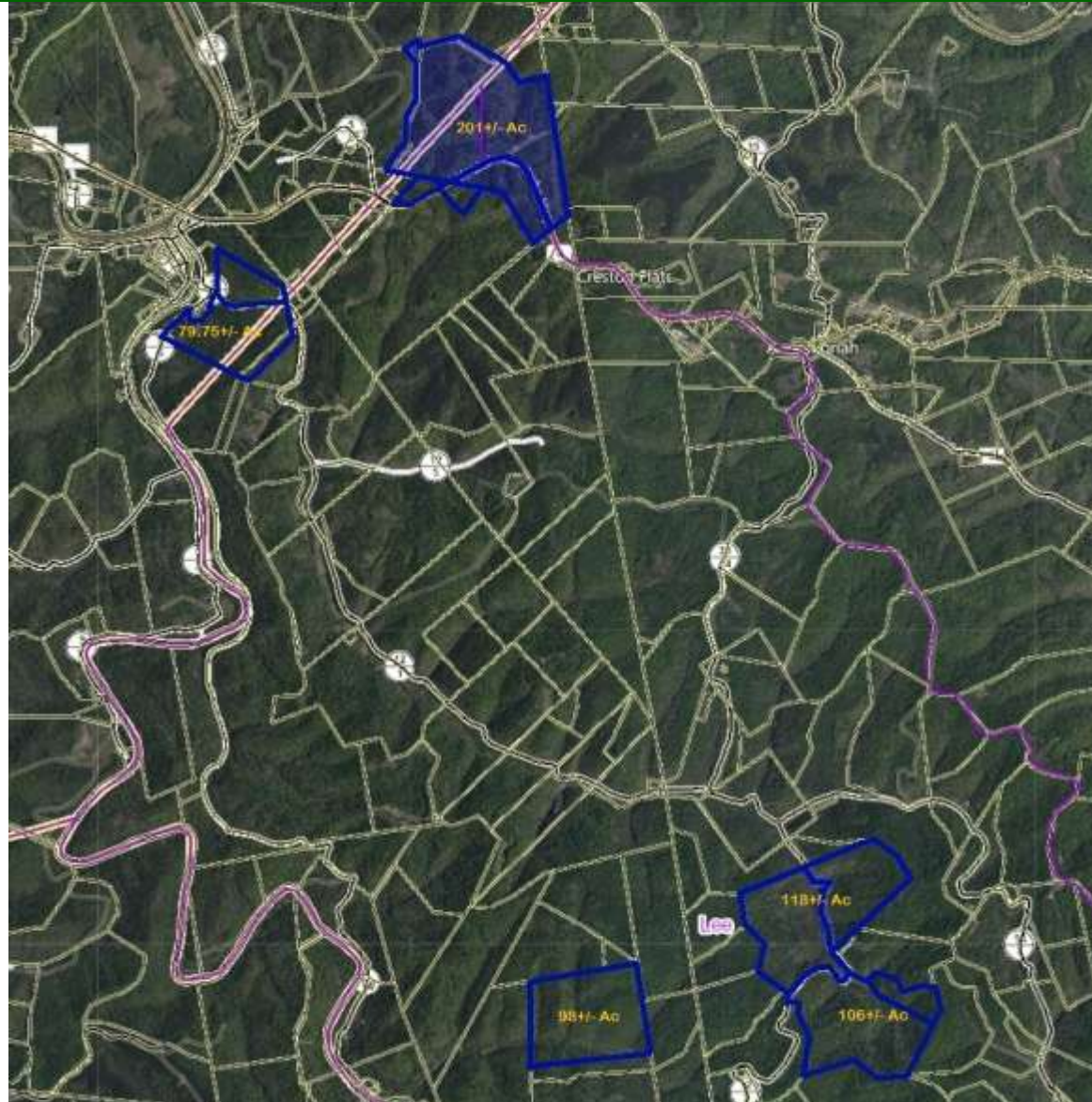
Group 5: 79.75 Acres +/-

Groups 1, 2, 3, 4 & 5



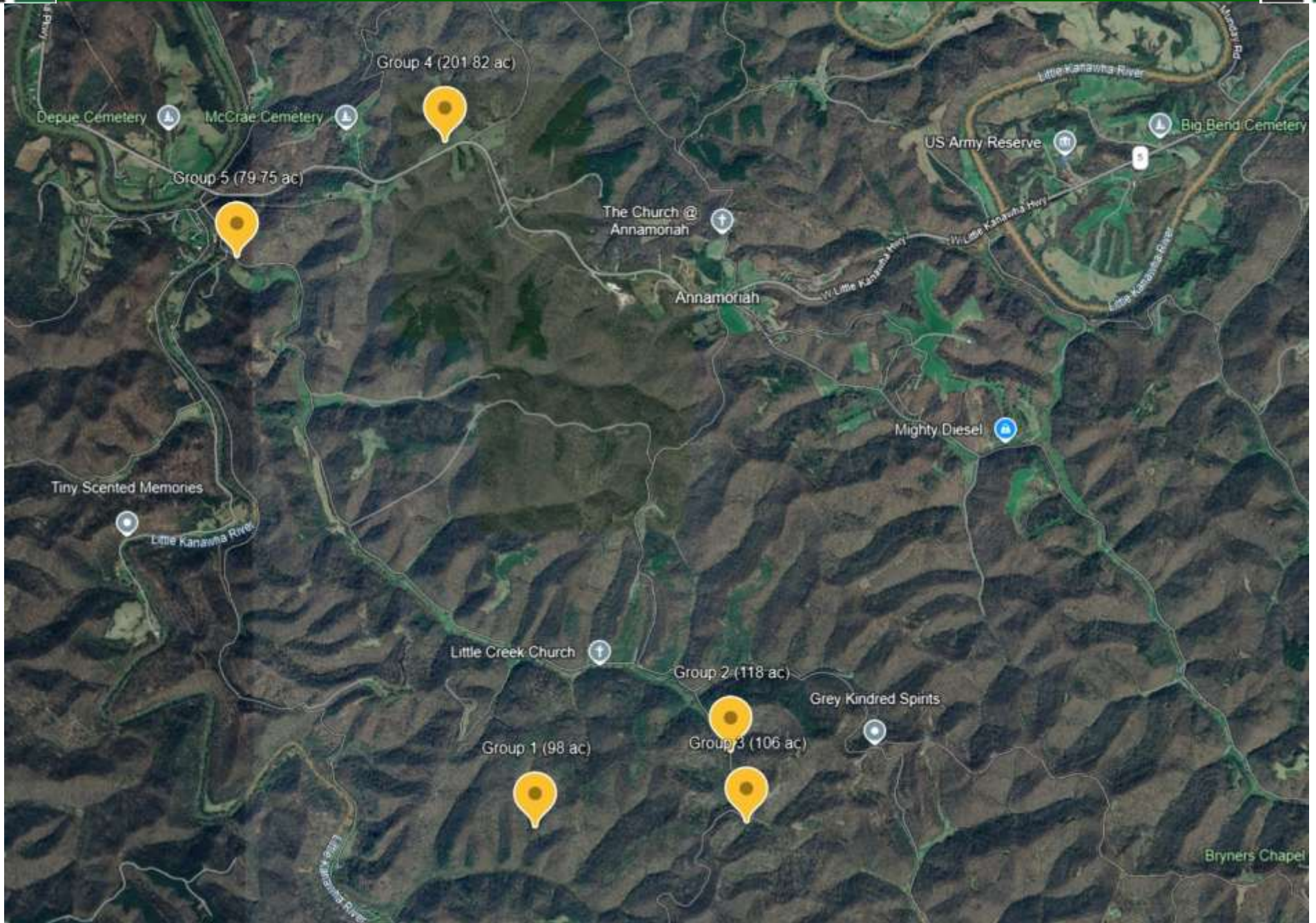
603.57 Acres +/-

Groups 1, 2, 3, 4 & 5

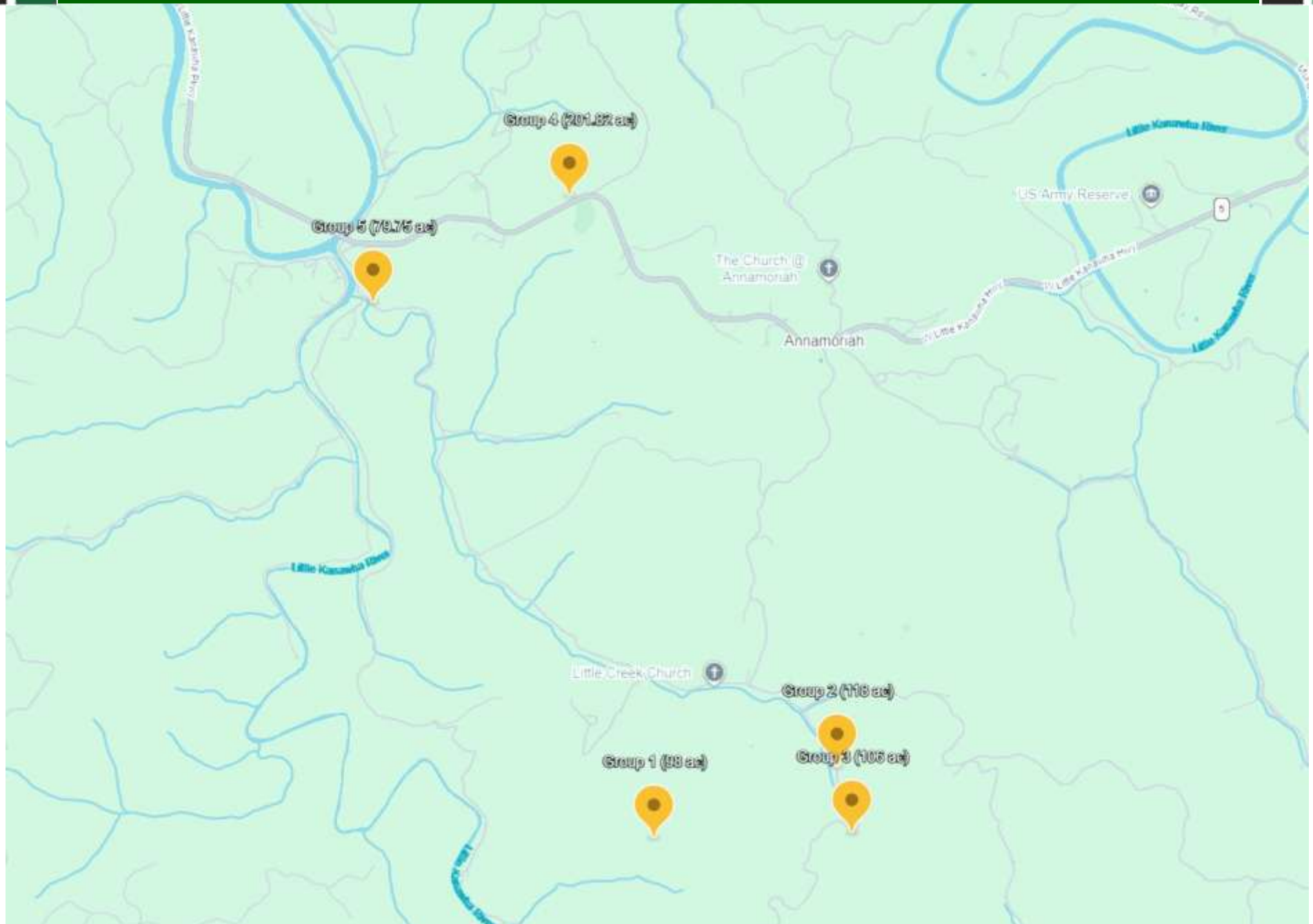


603.57 Acres +/-

Groups 1-5: 603.57 Acres +/-



Groups 1-5: 603.57 Acres +/-





Kay Michael Alexander
Salesperson / ABR / GRI / Green / Luxury
Commercial
kalexander@howardhanna.com
304-282-0077



Scott Summers
Associate Broker
rsummers@mountain.net
304-282-3463

At Howard Hanna Premier Properties by Barbara Alexander, LLC we strive to bring the best service to our clients utilizing a wide variety of tools, media, technology, and our national network of commercial brokers, companies and resources.

