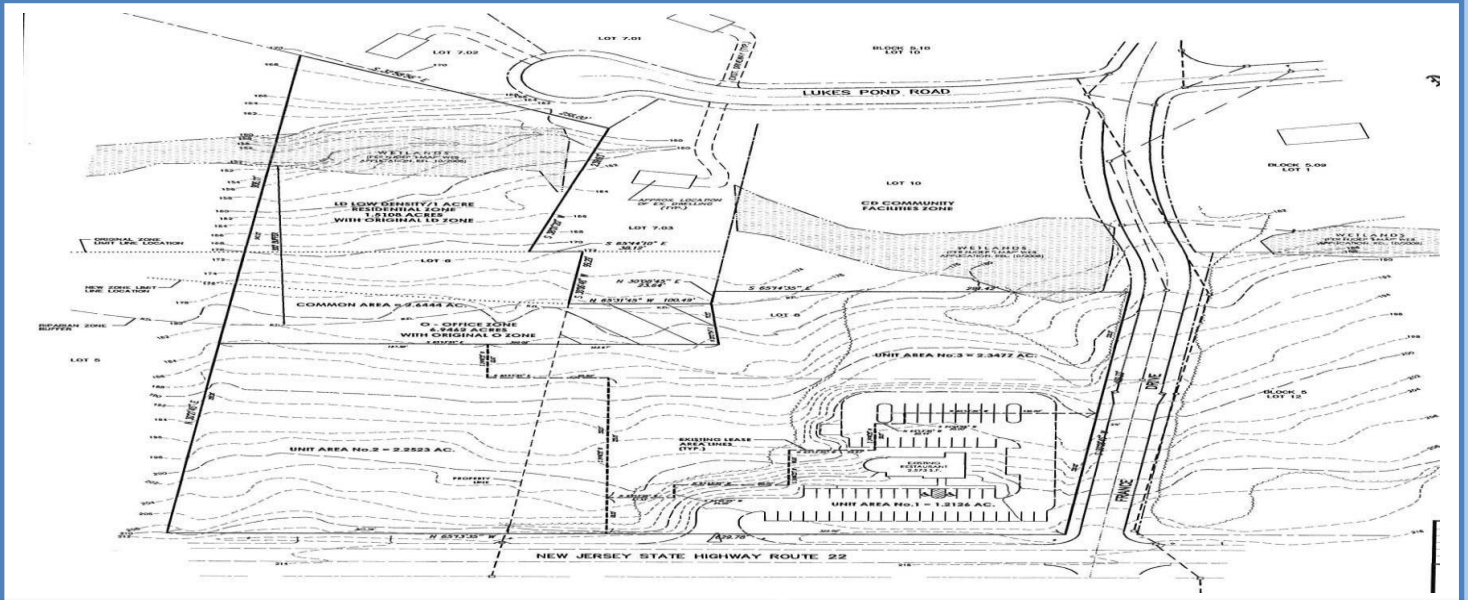


DEVELOPMENT OPPORTUNITY

3366 Route 22 W. Branchburg SOMERSET COUNTY, NJ



PROPERTY DESCRIPTION

- 6.70 Acres on Route 22 West in Branchburg, a Prestigious Somerset County Location
- Lots: 6.02 & 6.03
- Located in the O/LD Zone- (Office Zone and Low Density Residential)
- Permitted Uses Include: Professional Offices/Medical Offices/Child Care
- The Site is Serviced by all Public Utilities: Water, Sewer, Electric & Gas
- 34,000 VPD
- Offered at: \$989,900.



Timothy P. Deluccia

Broker Associate

908-938-6405

tim@delucciacommercialgroup.com

Commercial Sales/Leasing

**BERKSHIRE
HATHAWAY** | FOX & ROAC
HOMESERVICES | REALTORS®

COMMERCIAL DIVISION

