

# LAND FOR SALE

2750 E MICHIGAN AVE



## ± 9.24 ACRES - YPSILANTI TOWNSHIP, MI

2750 E MICHIGAN AVENUE, YPSILANTI, MI 48198

### PROPERTY HIGHLIGHTS:

- ± 9.24 acre development site
- All utilities are available to the site
- Outstanding visibility with over 550' of frontage on E Michigan Ave
- Form-Based Mixed-Use Zoning allows for a wide variety of uses
- Just two miles west of Amazon's new 183,000 SF Canton Township facility
- Sale Price: \$849,999

### IDEAL SITE USES

DEALERSHIP FOR SALES OF NEW OR USED VEHICLES

BOAT SALES

TRAILER OR VEHICLE RENTALS

TECH/OFFICE RESEARCH/DATA CENTER

MULTI-FAMILY & RETAIL MIXED-USED PROJECT

SENIOR ASSISTED/INDEPENDENT LIVING

VARIETY OF OTHER PERMITTED AND SPECIAL USES

### FOR MORE INFORMATION PLEASE CONTACT:

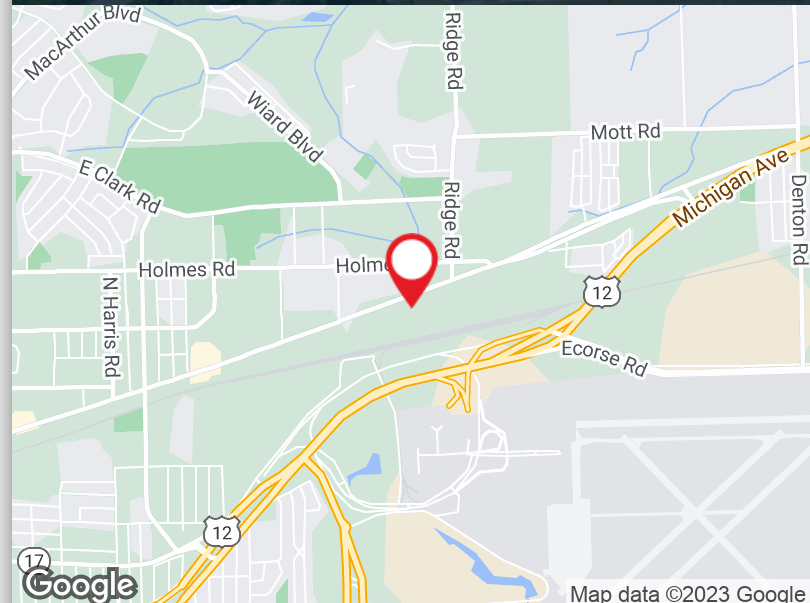


**RYAN STIPP**  
ryan.stipp@freg.com

**248.324.2000**

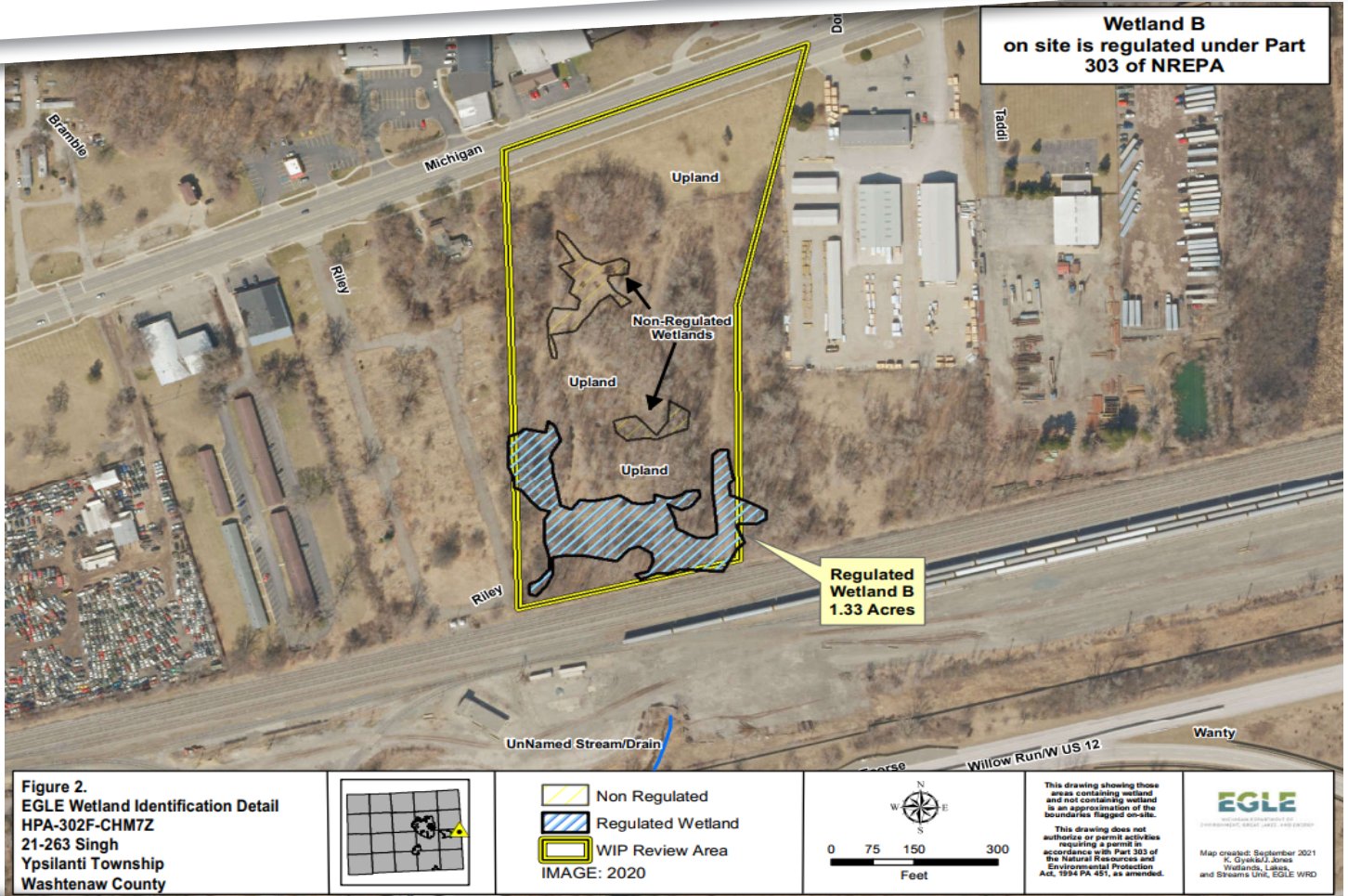
**eCODE 100**

The information provided herein along with any attachment(s) was obtained from sources believed to be reliable, however, Friedman Real Estate makes no guarantees, warranties, or representations as to the completeness or accuracy of such information and legal counsel is advised. All information provided is subject to verification and no liability for reliance on such information or errors or omissions is assumed. The presentation of this property is submitted subject to errors, omissions, change of price or conditions, prior sale or lease, or withdrawal without notice. Copyright © 2023 Friedman Real Estate. All rights reserved.





# 2750 E MICHIGAN AVE WETLAND IDENTIFICATION DETAIL



FOR MORE INFORMATION PLEASE CONTACT:



**RYAN STIPP**  
ryan.stipp@freg.com