

TWO SPACES FOR LEASE

24408 Jericho Tpke

Floral Park, NY 11001

PIEBELLA AESTHETICS

244-08 Jericho Tpke.

718.885.5024

REALTY EXECUTIVES INTERNATIONAL POWERHOUSE

244-06 Jericho Tpke.

ST INSURANCES ACCEPTED

WAXING • FACIALS • LASHES HAIR • NAILS & PEDICURE

MULTIPLE LISTING SERVICE

Entrance

For More Information:

[Rozita Soomekh- Results Powered by Rozita](#)

Licensed Associate Real Estate Broker
Douglas Elliman Commercial - Long Island
516.498.2152
rozita.soomekh@elliman.com

 **Douglas Elliman**
Commercial

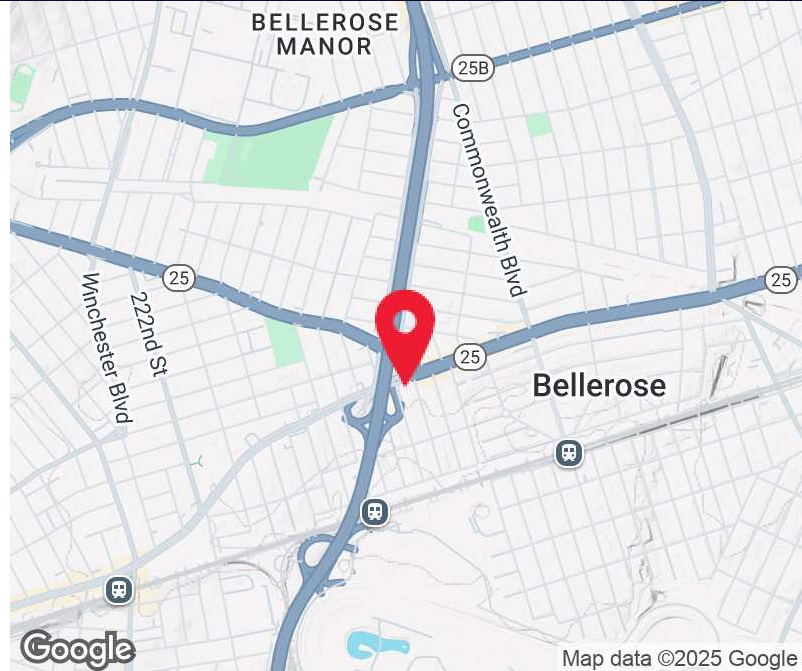
WWW.ELLMANCOMMERCIAL.COM

THE PROPERTY CONTAINED WITHIN THIS DOCUMENT IS BEING EXCLUSIVELY REPRESENTED BY DOUGLAS ELLIMAN REAL ESTATE COMMERCIAL DIVISION, 650 SMITHTOWN BYPASS STE. 117 SMITHTOWN, NY 11787 631 868-2405 © 2023 DOUGLAS ELLIMAN COMMERCIAL OF LI, L.L.C. ALL MATERIAL PRESENTED HEREIN IS INTENDED FOR INFORMATION PURPOSES ONLY. WHILE THIS INFORMATION IS BELIEVED TO BE CORRECT, IT IS REPRESENTED SUBJECT TO ERRORS, OMISSIONS, CHANGES OR WITHDRAWAL WITHOUT NOTICE. ALL PROPERTY INFORMATION, INCLUDING, BUT NOT LIMITED TO SQUARE FOOTAGE, ROOM COUNT, ZONING IN THE LISTING SHOULD BE VERIFIED BY YOUR OWN ATTORNEY, ARCHITECT OR ZONING EXPERT. IF YOUR PROPERTY IS CURRENTLY LISTED WITH ANOTHER REAL ESTATE BROKER, PLEASE DISREGARD THIS OFFER. IT IS NOT OUR INTENTION TO SOLICIT THE OFFERINGS OF OTHER REAL ESTATE BROKERS. WE COOPERATE WITH THEM FULLY. EQUAL HOUSING OPPORTUNITY.



Retail Property For Lease

24408 Jericho Tpke Floral Park, NY 11001



Offering Summary	
Lease Rate:	\$1,350.00 - 1,850.00 per month (MG)
Available SF:	500 - 700 SF
Number of Units:	2

Property Overview

Unit 1
 Size: 700 SF
 Rent: \$1,850/month
 UTL: +\$150/Monthly

This spacious unit features a private front entrance directly on Jericho Turnpike, offering convenience and accessibility. While the unit does not have a front-facing window, its layout is well-suited for a variety of businesses seeking a visible location with direct street access. Ideal for professional or service-based uses.

Unit 2
 Size: 500 SF
 Rent: \$1,350/month
 UTL: +\$150/Monthly

Located at the rear of the building, this 500 SF unit offers privacy and functionality. Previously used as a hair salon, the space provides a flexible layout to accommodate different business needs. Please note: The entrance is located in the back of the building, and the unit does not have front-facing windows. Perfect for businesses seeking an affordable, tucked-away space.

For More Information:

Rozita Soomekh- Results Powered by Rozita

Licensed Associate Real Estate Broker
 Douglas Elliman Commercial - Long Island
 516.498.2152
 rozita.soomekh@elliman.com



WWW.ELLIMANCOMMERCIAL.COM

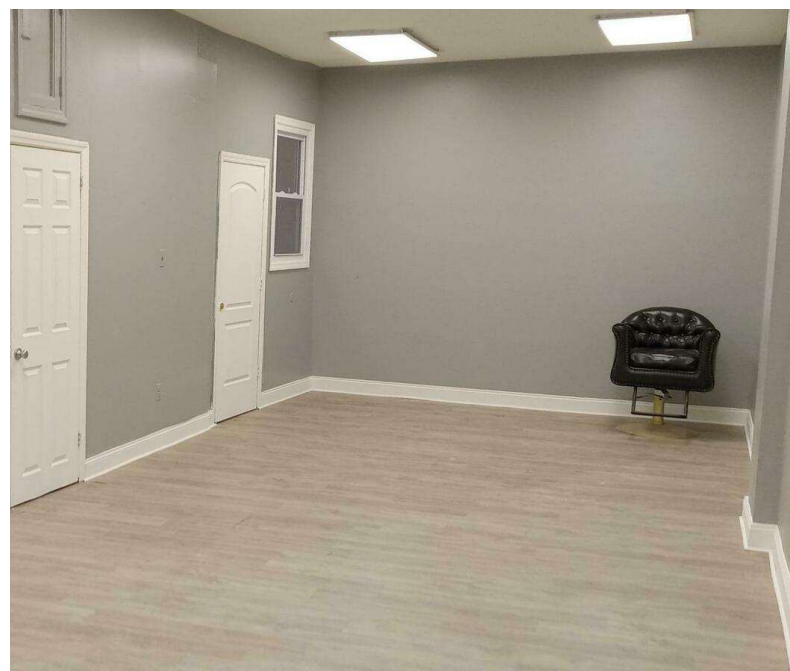
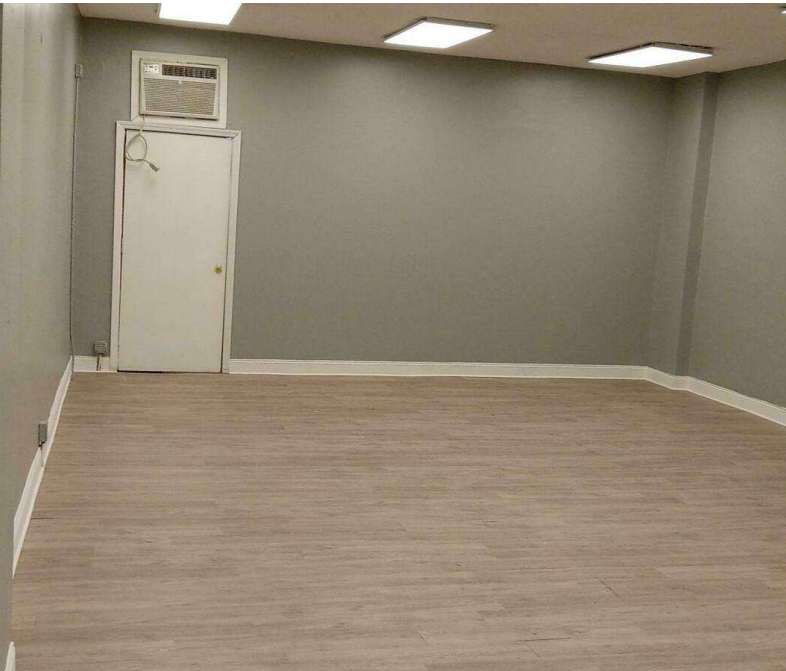
THE PROPERTY CONTAINED WITHIN THIS DOCUMENT IS BEING EXCLUSIVELY REPRESENTED BY DOUGLAS ELLIMAN REAL ESTATE COMMERCIAL DIVISION, 550 SMITHTOWN BYPASS STE. 117 SMITH-TOWN, NY 11787 631.858.2405 © 2023 DOUGLAS ELLIMAN COMMERCIAL OF LI, LLC. ALL MATERIAL PRESENTED HEREIN IS INTENDED FOR INFORMATION PURPOSES ONLY. WHILE THIS INFORMATION IS BELIEVED TO BE CORRECT, IT IS REPRESENTED SUBJECT TO ERRORS, OMISSIONS, CHANGES OR WITHDRAWAL WITHOUT NOTICE. ALL PROPERTY INFORMATION, INCLUDING, BUT NOT LIMITED TO SQUARE FOOTAGE, ROOM COUNT, ZONING IN THE LISTING SHOULD BE VERIFIED BY YOUR OWN ATTORNEY, ARCHITECT OR ZONING EXPERT. IF YOUR PROPERTY IS CURRENTLY LISTED WITH ANOTHER REAL ESTATE BROKER, PLEASE DISREGARD THIS OFFER. IT IS NOT OUR INTENTION TO SOLICIT THE OFFERINGS OF OTHER REAL ESTATE BROKERS. WE COOPERATE WITH THEM FULLY. EQUAL HOUSING OPPORTUNITY.



Unit # 1

700 SF

\$ 1,850/ Month



For More Information:

Rozita Soomekh- Results Powered by Rozita

Licensed Associate Real Estate Broker
Douglas Elliman Commercial - Long Island
516.498.2152
rozita.soomekh@elliman.com



WWW.ELLIMANCOMMERCIAL.COM

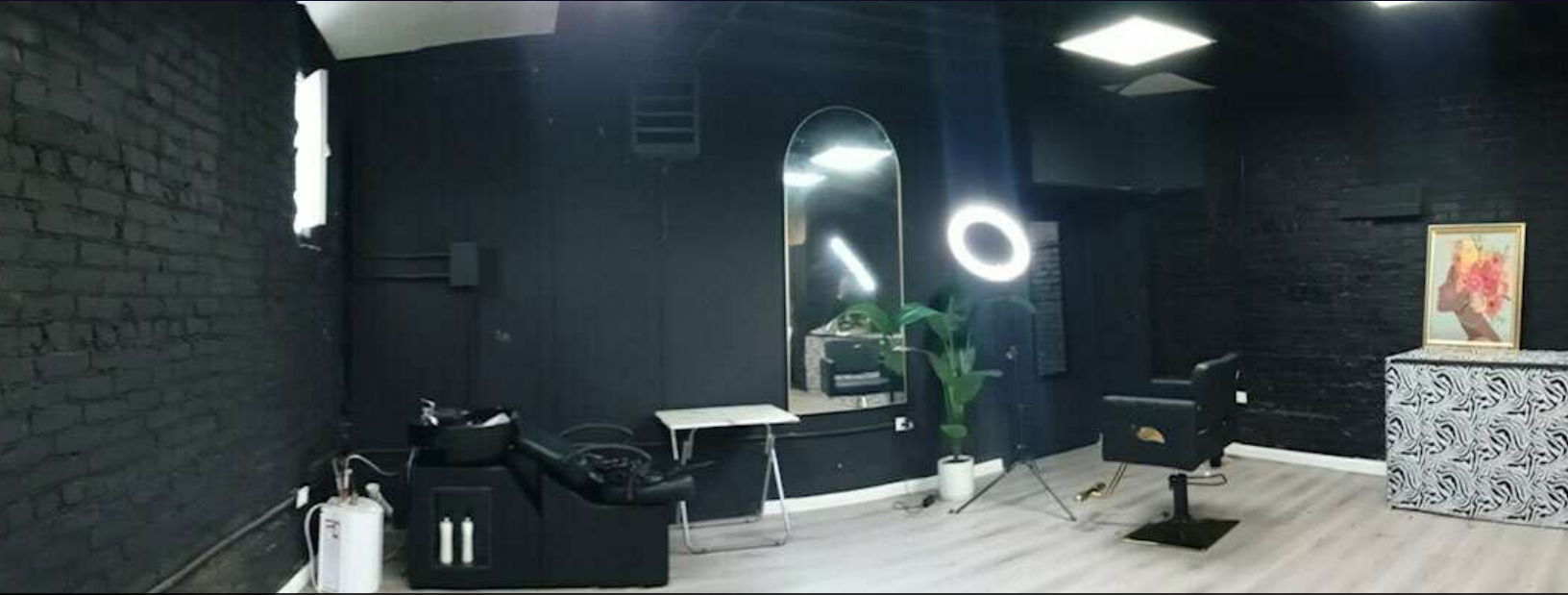
THE PROPERTY CONTAINED WITHIN THIS DOCUMENT IS BEING EXCLUSIVELY REPRESENTED BY DOUGLAS ELLIMAN REAL ESTATE COMMERCIAL DIVISION, 550 SMITHTOWN BYPASS STE. 117 SMITH-TOWN, NY 11787 631.858.2405 © 2023 DOUGLAS ELLIMAN COMMERCIAL OF LI, LLC. ALL MATERIAL PRESENTED HEREIN IS INTENDED FOR INFORMATION PURPOSES ONLY. WHILE THIS INFORMATION IS BELIEVED TO BE CORRECT, IT IS REPRESENTED SUBJECT TO ERRORS, OMISSIONS, CHANGES OR WITHDRAWAL WITHOUT NOTICE. ALL PROPERTY INFORMATION, INCLUDING, BUT NOT LIMITED TO SQUARE FOOTAGE, ROOM COUNT, ZONING IN THE LISTING SHOULD BE VERIFIED BY YOUR OWN ATTORNEY, ARCHITECT OR ZONING EXPERT. IF YOUR PROPERTY IS CURRENTLY LISTED WITH ANOTHER REAL ESTATE BROKER, PLEASE DISREGARD THIS OFFER. IT IS NOT OUR INTENTION TO SOLICIT THE OFFERINGS OF OTHER REAL ESTATE BROKERS. WE COOPERATE WITH THEM FULLY. EQUAL HOUSING OPPORTUNITY.



Unit # 2 - Entrance is in the Back

500 SF

\$ 1,350 / Month



Previously a Hair Salon



Only Entrance for this Space

For More Information:

Rozita Soomekh- Results Powered by Rozita

Licensed Associate Real Estate Broker
Douglas Elliman Commercial - Long Island
516.498.2152
rozita.soomekh@elliman.com



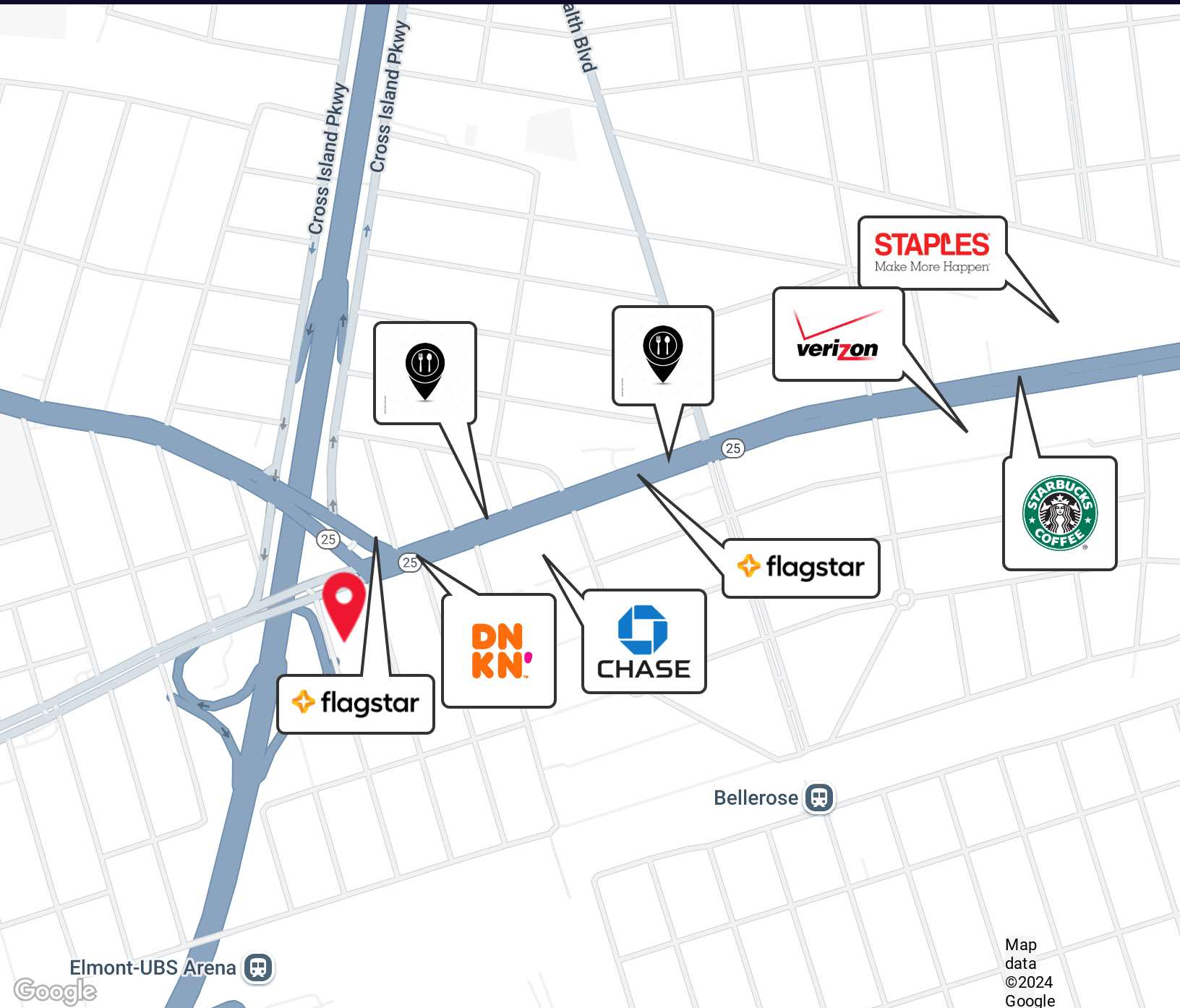
WWW.ELLIMANCOMMERCIAL.COM

THE PROPERTY CONTAINED WITHIN THIS DOCUMENT IS BEING EXCLUSIVELY REPRESENTED BY DOUGLAS ELLIMAN REAL ESTATE COMMERCIAL DIVISION, 550 SMITHTOWN BYPASS STE. 117 SMITHTOWN, NY 11787 631.858.2405 © 2023 DOUGLAS ELLIMAN COMMERCIAL OF LI, L.L.C. ALL MATERIAL PRESENTED HEREIN IS INTENDED FOR INFORMATION PURPOSES ONLY. WHILE THIS INFORMATION IS BELIEVED TO BE CORRECT, IT IS REPRESENTED SUBJECT TO ERRORS, OMISSIONS, CHANGES OR WITHDRAWAL WITHOUT NOTICE. ALL PROPERTY INFORMATION, INCLUDING, BUT NOT LIMITED TO SQUARE FOOTAGE, ROOM COUNT, ZONING IN THE LISTING SHOULD BE VERIFIED BY YOUR OWN ATTORNEY, ARCHITECT OR ZONING EXPERT. IF YOUR PROPERTY IS CURRENTLY LISTED WITH ANOTHER REAL ESTATE BROKER, PLEASE DISREGARD THIS OFFER. IT IS NOT OUR INTENTION TO SOLICIT THE OFFERINGS OF OTHER REAL ESTATE BROKERS. WE COOPERATE WITH THEM FULLY. EQUAL HOUSING OPPORTUNITY.



Retail Property For Lease

24408 Jericho Tpke Floral Park, NY 11001



For More Information:

Rozita Soomekh- Results Powered by Rozita

Licensed Associate Real Estate Broker
Douglas Elliman Commercial - Long Island
516.498.2152
rozita.soomekh@elliman.com



WWW.ELLIMANCOMMERCIAL.COM

THE PROPERTY CONTAINED WITHIN THIS DOCUMENT IS BEING EXCLUSIVELY REPRESENTED BY DOUGLAS ELLIMAN REAL ESTATE COMMERCIAL DIVISION, 550 SMITHTOWN BYPASS STE. 117 SMITHTOWN, NY 11787 631.858.2405 © 2023 DOUGLAS ELLIMAN COMMERCIAL OF LI, LLC. ALL MATERIAL PRESENTED HEREIN IS INTENDED FOR INFORMATION PURPOSES ONLY. WHILE THIS INFORMATION IS BELIEVED TO BE CORRECT, IT IS REPRESENTED SUBJECT TO ERRORS, OMISSIONS, CHANGES OR WITHDRAWAL WITHOUT NOTICE. ALL PROPERTY INFORMATION, INCLUDING, BUT NOT LIMITED TO SQUARE FOOTAGE, ROOM COUNT, ZONING IN THE LISTING SHOULD BE VERIFIED BY YOUR OWN ATTORNEY, ARCHITECT OR ZONING EXPERT. IF YOUR PROPERTY IS CURRENTLY LISTED WITH ANOTHER REAL ESTATE BROKER, PLEASE DISREGARD THIS OFFER. IT IS NOT OUR INTENTION TO SOLICIT THE OFFERINGS OF OTHER REAL ESTATE BROKERS. WE COOPERATE WITH THEM FULLY. EQUAL HOUSING OPPORTUNITY.



Retail Property For Lease

24408 Jericho Tpke Floral Park, NY 11001



Rozita Soomekh- Results Powered By Rozita

Licensed Associate Real Estate Broker

rozita.soomekh@elliman.com

Direct: 516.498.2152 | Cell: 516.205.2279

Professional Background

Rozita Soomekh

Top Commercial Real Estate Agent | Douglas Elliman

With over two decades of success in the real estate industry, Rozita Soomekh has built a reputation as one of the leading commercial real estate professionals in New York. Since 2000, Rozita has been providing exceptional service to a diverse range of clients, including individual investors, developers, large franchises, and well-established businesses.

Clients choose to work with Rozita for her comprehensive, full-service approach, integrity, extensive market knowledge, and tireless work ethic. Whether her clients are buying, selling, or investing in real estate, Rozita consistently delivers results that exceed expectations.

Her success is driven by a loyal base of repeat clients, many of whom are prominent developers and business leaders. Rozita has successfully marketed and sold commercial and residential properties across the five boroughs of New York, including Nassau, Queens, the Bronx, Manhattan, Brooklyn, and Suffolk.

In late 2018, Rozita expanded her business by forming The Rozita Soomekh Team, enabling her to better meet the growing demands of her clientele. Under her leadership, the team has excelled in closing high-value transactions and building long-term client relationships. Rozita's commitment to staying ahead of market trends and her dedication to providing clients with the best marketing strategies and negotiation tactics have earned her multiple awards and industry recognition.

At Douglas Elliman, Rozita is able to leverage the firm's vast resources and marketing capabilities to ensure her clients receive the highest level of service and the best possible outcomes. With a proven track record of success and a commitment to excellence, Rozita Soomekh continues to be a trusted name in commercial real estate.

Douglas Elliman Commercial - Long Island

550 Smithtown Bypass Suite 117

Smithtown, NY 11787

631.858.2405

For More Information:

Rozita Soomekh- Results Powered by Rozita

Licensed Associate Real Estate Broker

Douglas Elliman Commercial - Long Island

516.498.2152

rozita.soomekh@elliman.com



WWW.ELLIMANCOMMERCIAL.COM