

# ICLEF Building

230 E. Ohio, Indianapolis, IN 46204

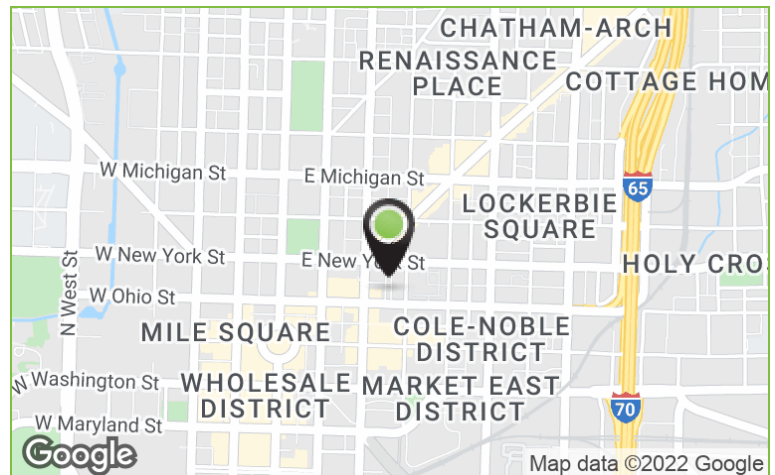


## Office

995 - 2,669 SF

### PROPERTY HIGHLIGHTS

- Historic Charm - exposed brick lobby, secure access, and layouts perfect for a multitude of uses.
- Immediate Opportunity - the property is able to accommodate occupancy quickly
- Prime CBD Location - directly North of City Market and City-County Building, and just steps away from Mass Ave - walkable to countless amenities.



DEMOGRAPHICS	1 MILE	2 MILES	3 MILES
Total Households	5,768	20,543	39,120
Total Population	12,496	47,647	95,871
Average HH Income	\$65,017	\$50,861	\$43,977

Mike Short  
Director  
Mike@alopg.com  
C: 317.800.4664

ALO Property Group  
9075 N. Meridian St., Ste. 175  
Indianapolis, IN 46260  
O: 317.853.7500  
www.alopg.com





# ICLEF Building

230 E. Ohio, Indianapolis, IN 46204

Photos



Mike Short  
Director  
Mike@alopg.com  
C: 317.800.4664

ALO Property Group  
9075 N. Meridian St., Ste. 175  
Indianapolis, IN 46260  
O: 317.853.7500  
www.alopg.com





# ICLEF Building

230 E. Ohio, Indianapolis, IN 46204

Area Map



Mike Short  
Director  
Mike@alopg.com  
C: 317.800.4664

ALO Property Group  
9075 N. Meridian St., Ste. 175  
Indianapolis, IN 46260  
O: 317.853.7500  
www.alopg.com



# ICLEF Building

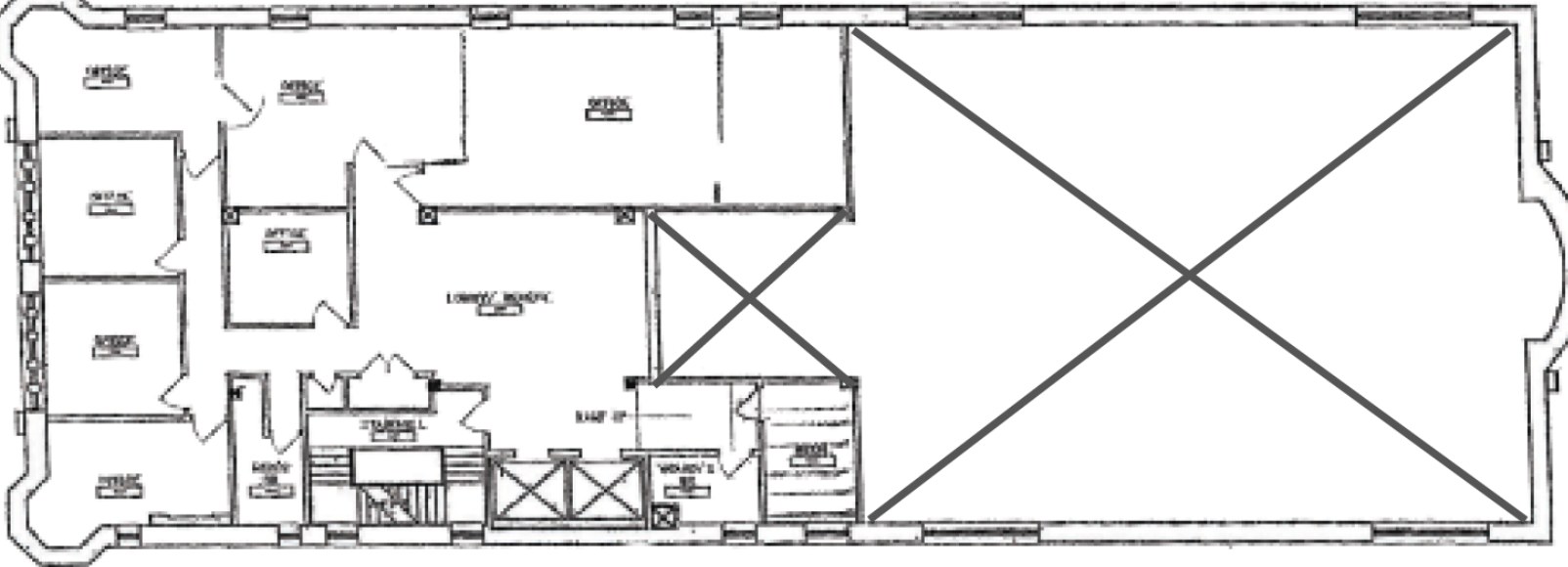
230 E. Ohio, Indianapolis, IN 46204

## Floor Plans

### SECOND FLOOR 995 SF



### SIXTH FLOOR 2,669 SF



Mike Short  
Director  
Mike@alopg.com  
C: 317.800.4664

ALO Property Group  
9075 N. Meridian St., Ste. 175  
Indianapolis, IN 46260  
O: 317.853.7500  
www.alopg.com

