



**PHYSICIAN OFFICES**  
6718 Lake Nona Blvd, Orlando, FL 32827



**TAVISTOCK**  
DEVELOPMENT COMPANY

**GINGER VETTER**

*Sr. Director Commercial Sales & Leasing*  
*Tavistock Development Company*  
P: 407.816.6686 | C: 407.619.5245  
GVetter@Tavistock.com



## PHYSICIAN OFFICES

6718 Lake Nona Blvd, Orlando, FL 32827

NORTH-WEST VIEW



WEST ELEVATION

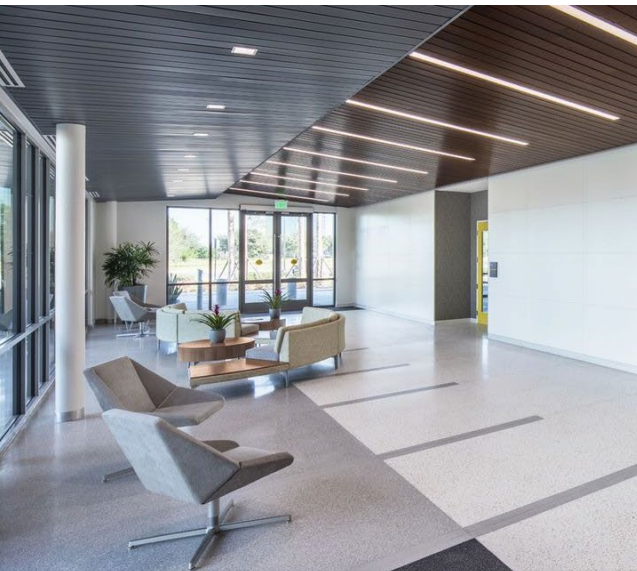
NORTH ELEVATION



**TAVISTOCK**  
DEVELOPMENT COMPANY

**GINGER VETTER**

*Sr. Director Commercial Sales & Leasing  
Tavistock Development Company  
P: 407.816.6686 | C: 407.619.5245  
GVetter@Tavistock.com*



## PHYSICIAN OFFICES

6718 Lake Nona Blvd, Orlando, FL 32827

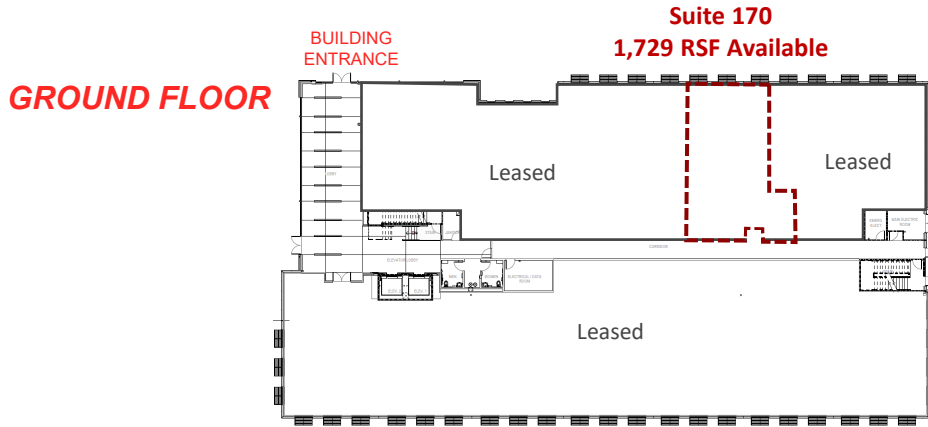


**TAVISTOCK**  
DEVELOPMENT COMPANY

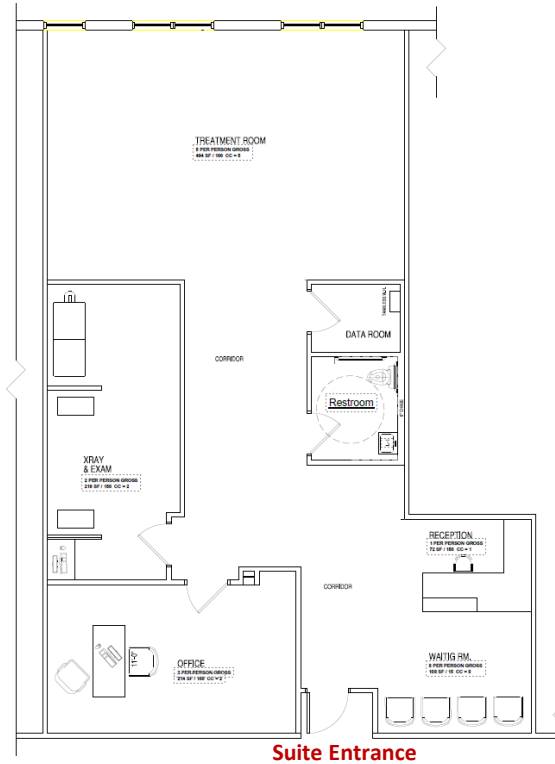
### GINGER VETTER

*Sr. Director Commercial Sales & Leasing*  
Tavistock Development Company  
P: 407.816.6686 | C: 407.619.5245  
GVetter@Tavistock.com

# CLASS A MEDICAL OFFICE SPACE AVAILABLE



## CONCEPTUAL PLAN (Space is delivered in shell condition)



\*Demising wall locations and design/configuration of suite entrances are approximate; final design and overall measurement will be determined with space planning.

## PHYSICIAN OFFICES

6718 Lake Nona Blvd, Orlando, FL 32827



**TAVISTOCK**  
DEVELOPMENT COMPANY

**GINGER VETTER**

*Sr. Director Commercial Sales & Leasing*  
*Tavistock Development Company*  
P: 407.816.6686 | C: 407.619.5245  
GVetter@Tavistock.com

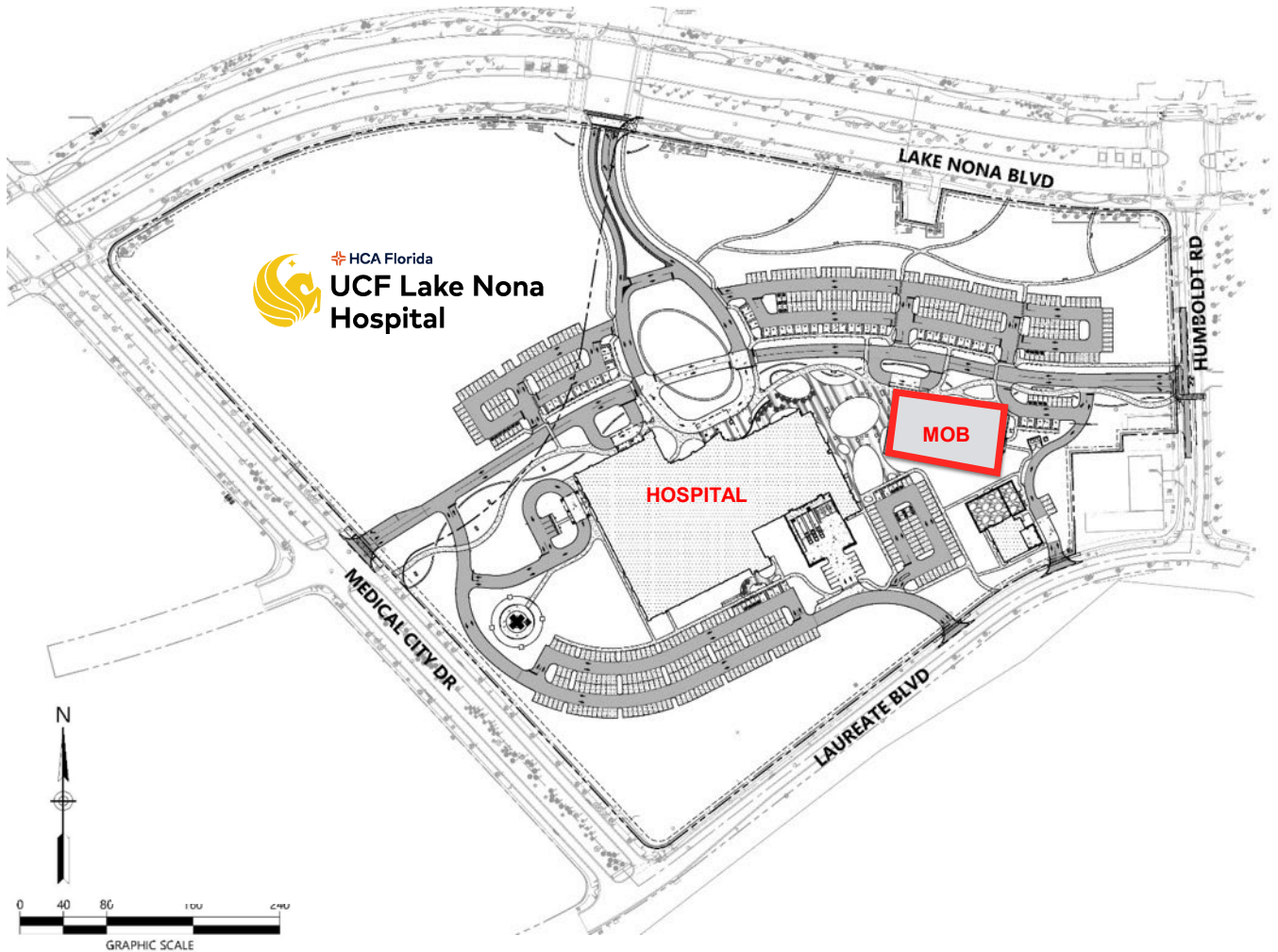
HOSPITAL



PHYSICIAN OFFICES



PHYSICIAN OFFICES ARE LOCATED NEXT TO THE HOSPITAL ON THE UCF LAKE NONA HOSPITAL CAMPUS



**GINGER VETTER**  
*Sr. Director Commercial Sales & Leasing*  
*Tavistock Development Company*  
 P: 407.816.6686 | C: 407.619.5245  
 GVetter@Tavistock.com



## PHYSICIAN OFFICES

6718 Lake Nona Blvd, Orlando, FL 32827

### LAKE NONA MEDICAL CITY

Lake Nona's health & life sciences campus represents a deliberate strategy to create a centralized focus on sophisticated medical treatment, research, and education in Orlando.

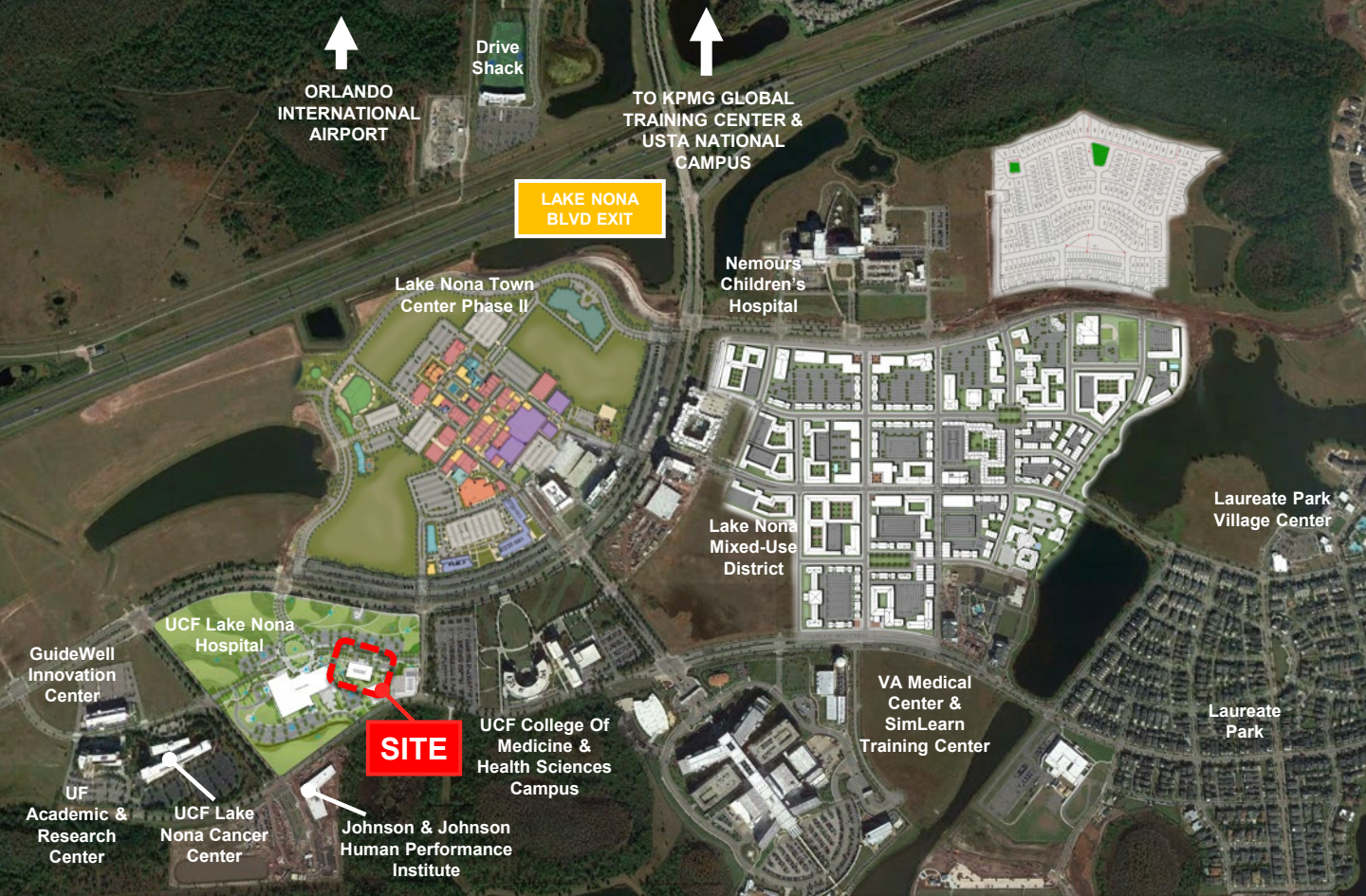
In just 10 years, Lake Nona has become home to some of the nation's top hospitals, universities, research institutions and health and biomedical companies. Lake Nona health and life sciences anchor tenants, include:

- University of Central Florida's (UCF) Health Sciences Campus
- UCF College of Medicine
- UCF Lake Nona Hospital
- UCF Lake Nona Cancer Center
- Orlando Veterans Affairs Medical Center & SimLearn Center
- Nemours Children's Hospital
- University of Florida Research & Academic Center
- GuideWell Innovation Center
- Lake Nona Performance Club



#### GINGER VETTER

*Sr. Director Commercial Sales & Leasing*  
Tavistock Development Company  
P: 407.816.6686 | C: 407.619.5245  
GVetter@Tavistock.com



## LOCATION AND PROPERTY FEATURES

- 45,513 SF, 2-story, Class A Medical Office Building in the heart of Lake Nona Medical City
- Located on the UCF Lake Nona Hospital Campus
- Adjacent to 64-bed, UCF Lake Nona Hospital adult-teaching hospital
- Surface parking at a ratio of 4.5/1,000 RSF
- In very close proximity to Lake Nona Town Center, a multi-use project including Class A office, restaurants, retail, hotels, entertainment venues and state-of-the-art Lake Nona Performance Club
- Multiple housing options nearby
- Under 10 minutes from Orlando Int'l Airport with quick access to SR 417, SR 528, and Florida's Turnpike



**TAVISTOCK**  
DEVELOPMENT COMPANY

### GINGER VETTER

*Sr. Director Commercial Sales & Leasing*  
Tavistock Development Company  
P: 407.816.6686 | C: 407.619.5245  
GVetter@Tavistock.com