

LAST SPACE AVAILABLE



RETAIL SPACE AVAILABLE FOR LEASE

PARADISE SQUARE

3831-3923 E Thunderbird Rd | Phoenix, AZ

Space Available:

Suite A109-111	2,450 SqFt
Suite B107	2,200 SqFt
Max Contiguous	4,650 SqFt

Space offered at: **\$19/sf NNN**

For more information please contact:

Ryan Banks

Property Manager

602.252.9300 | ryanb@casehuff.com

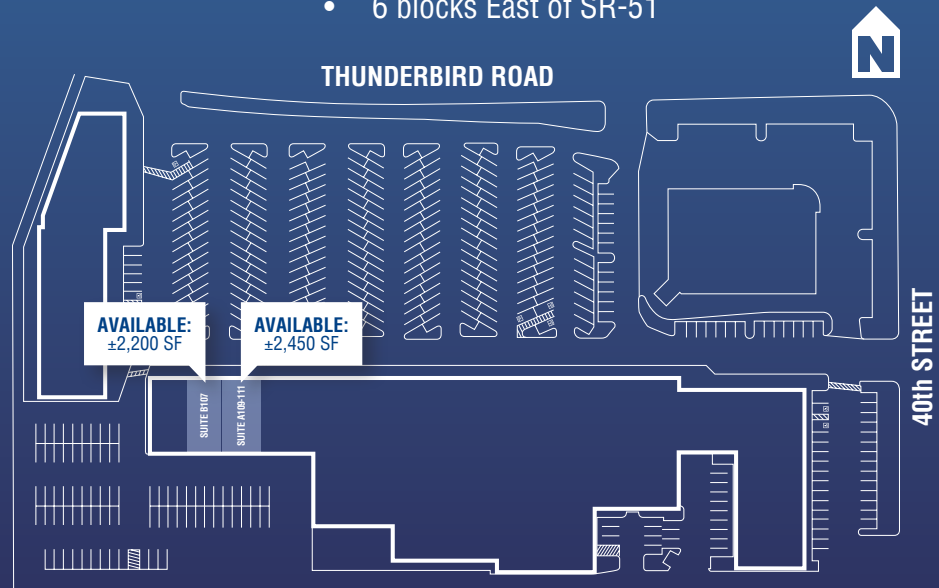
Professionally Managed & Leased by



www.casehuff.com



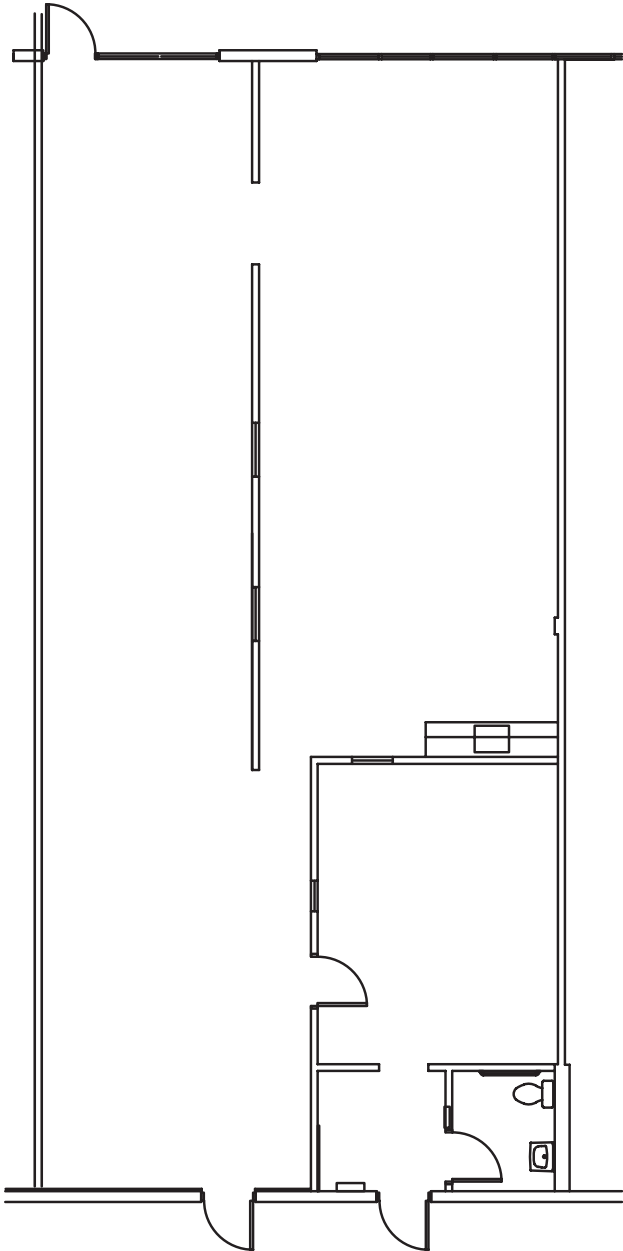
- Located in a dense residential area
- Thunderbird Rd (Traffic): ±29,842 VPD
- 40th Street (Traffic): ±18,421 VPD
- 1 mile Northwest of PV Mall
- 6 blocks East of SR-51



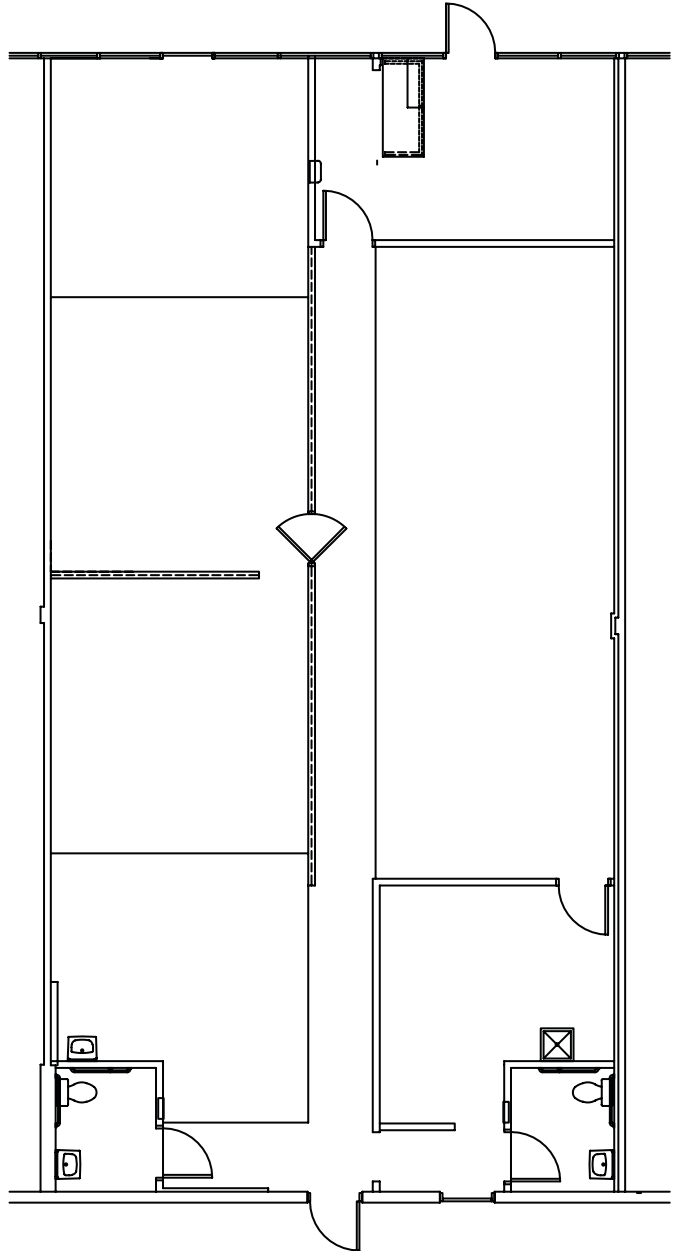
PARADISE SQUARE

FLOORPLANS

SUITE B107 2,200 SF



SUITE A109-111 2,450 SF



Space offered at: **\$19/sf NNN**



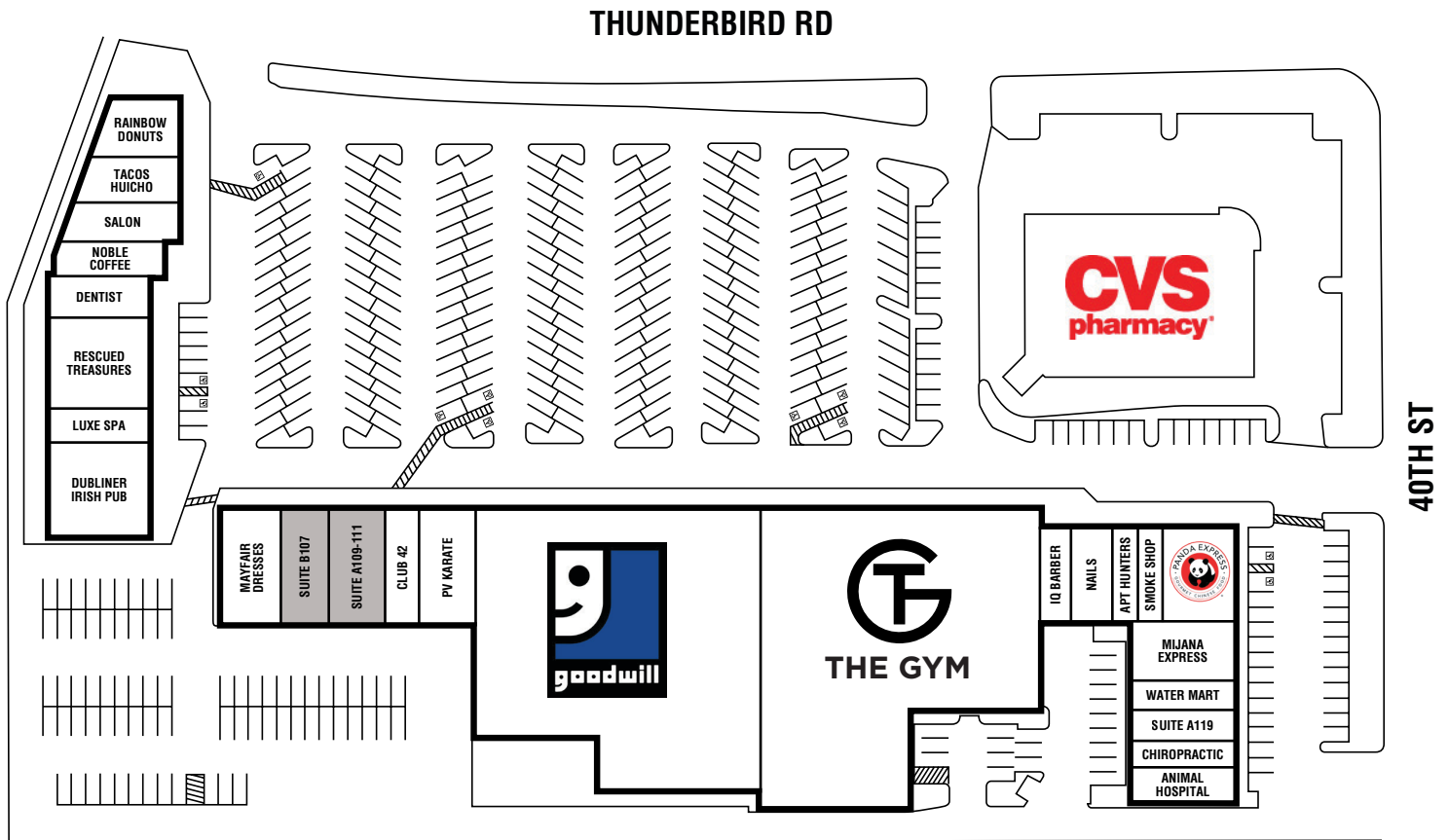
**CASE
HUFF
& ASSOCIATES**

www.casehuff.com

DISCLAIMER: No warranty or representation, express or implied, is made to the accuracy of the information contained herein and same is submitted subject to errors, omissions, change of price, rental or other conditions, withdrawal without notice and to any special listing conditions imposed by our principals.

PARADISE SQUARE

SUITE PLAN



Space Available for Lease:

Suite A109-111	2,450 SqFt
Suite B107	2,200 SqFt
Max Contiguous	4,650 SqFt

Space offered at: **\$19/sf NNN**

AVAILABLE SPACE
 OCCUPIED SPACE

For more information please contact:

Ryan Banks

Property Manager

602.252.9300 | ryanb@casehuff.com

Professionally Managed & Leased by



www.casehuff.com

DISCLAIMER: No warranty or representation, express or implied, is made to the accuracy of the information contained herein and same is submitted subject to errors, omissions, change of price, rental or other conditions, withdrawal without notice and to any special listing conditions imposed by our principals.