

9317-9321 MARINE CITY
IRA TWP., MICHIGAN



**SIGNATURE
ASSOCIATES**
KNOW SIGNATURE | KNOW RESULTS

INDUSTRIAL FOR LEASE
3,016 Square Feet Available



PROPERTY FEATURES

- 3,016 square feet available
- 472 square feet office
- (2) 10' x 12', 12' x 12'
- 13' clear height
- Great main road duplex building on the south side of 26 Mile Road (Marine City Highway)
- Ample parking in the front and rear
- Additional fenced yard also available to lease
- Lease Rate: \$7.95/sq. ft. MG



For more information, please contact:

PAUL SAAD
(248) 359 0652
psaad@signatureassociates.com

BEN WILKIEMEYER
(248) 359 0624
bwilkiemeyer@signatureassociates.com

SIGNATURE ASSOCIATES
One Towne Square, Suite 1200
Southfield, MI 48076
www.signatureassociates.com

9317-9321 Marine City Highway – Ira Twp., Michigan

Industrial For Lease

3,016
Square Feet
AVAILABLE

Interior Photos



For more information, please contact:

PAUL SAAD
(248) 359 0652
psaad@signatureassociates.com

BEN WILKIEMEYER
(248) 359 0624
bwilkiemeyer@signatureassociates.com

SIGNATURE ASSOCIATES
One Towne Square, Suite 1200
Southfield, MI 48076
www.signatureassociates.com

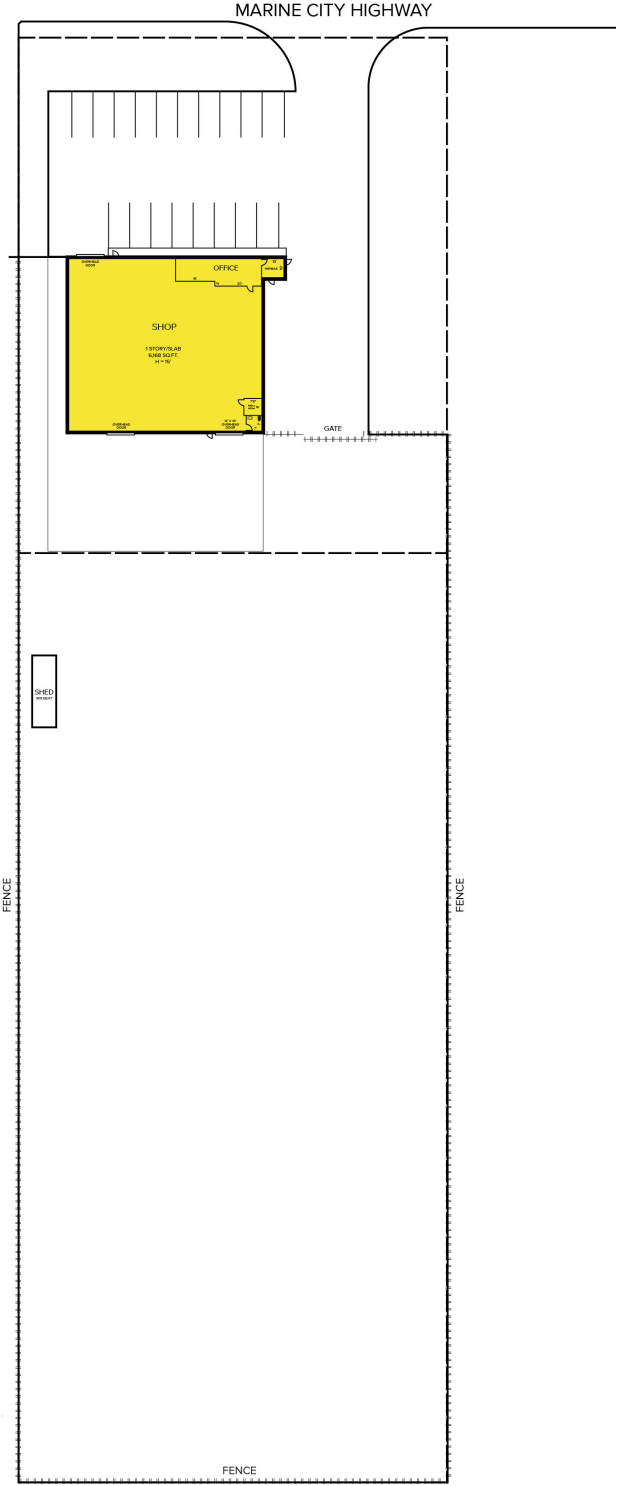
Information is subject to verification and no liability for errors or omissions is assumed. Price is subject to change and listing withdrawal.

9317-9321 Marine City Highway – Ira Twp., Michigan

Industrial For Lease

3,016
Square Feet
AVAILABLE

Site Plan



For more information, please contact:

PAUL SAAD
(248) 359 0652
psaad@signatureassociates.com

BEN WILKIEMEYER
(248) 359 0624
bwilkiemeyer@signatureassociates.com

SIGNATURE ASSOCIATES
One Towne Square, Suite 1200
Southfield, MI 48076
www.signatureassociates.com

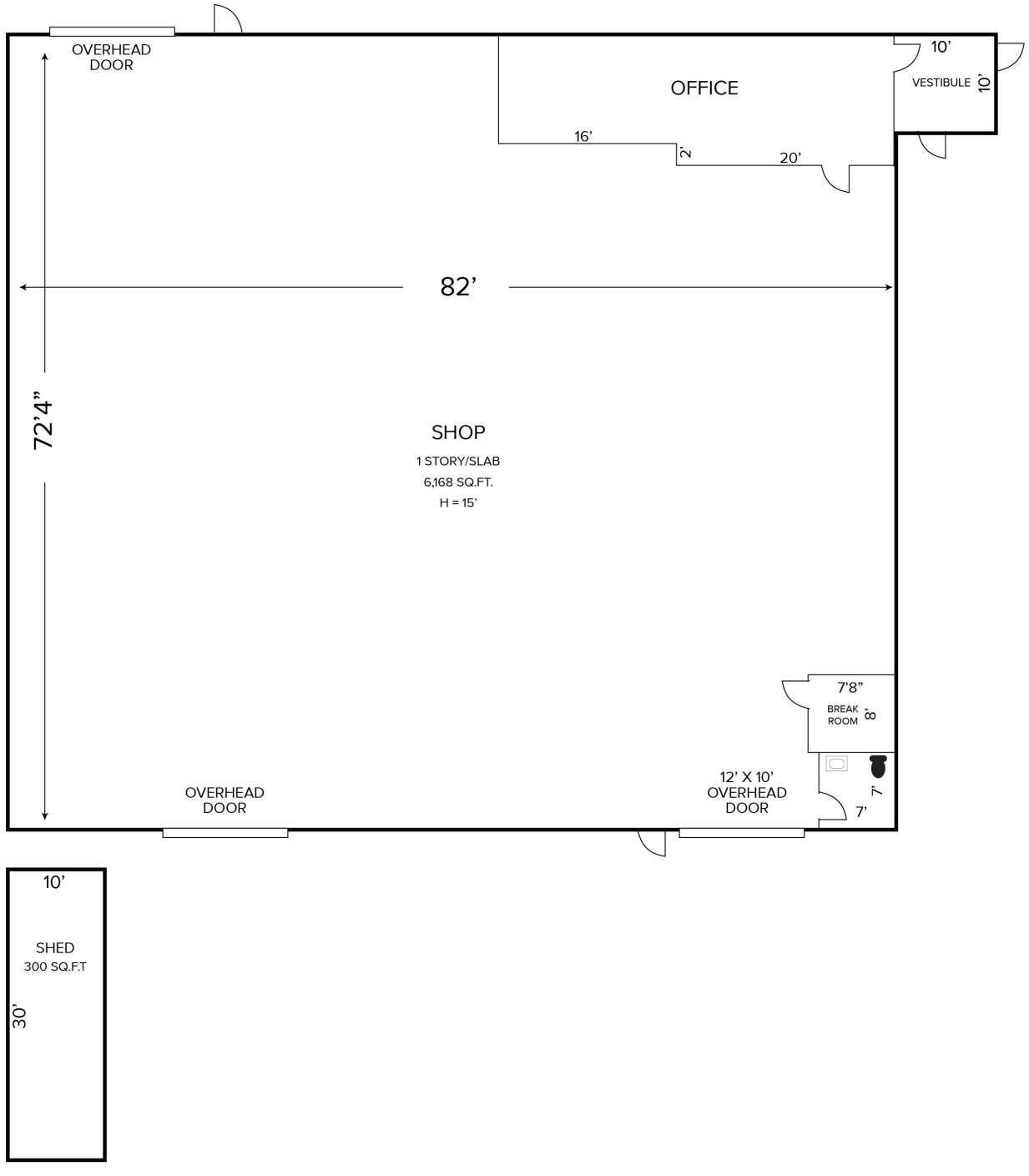
Information is subject to verification and no liability for errors or omissions is assumed. Price is subject to change and listing withdrawal.

9317-9321 Marine City Highway – Ira Twp., Michigan

Industrial For Lease

3,016
Square Feet
AVAILABLE

Floor Plan



For more information, please contact:

PAUL SAAD
(248) 359 0652
psaad@signatureassociates.com

BEN WILKIEMEYER
(248) 359 0624
bwilkiemeyer@signatureassociates.com

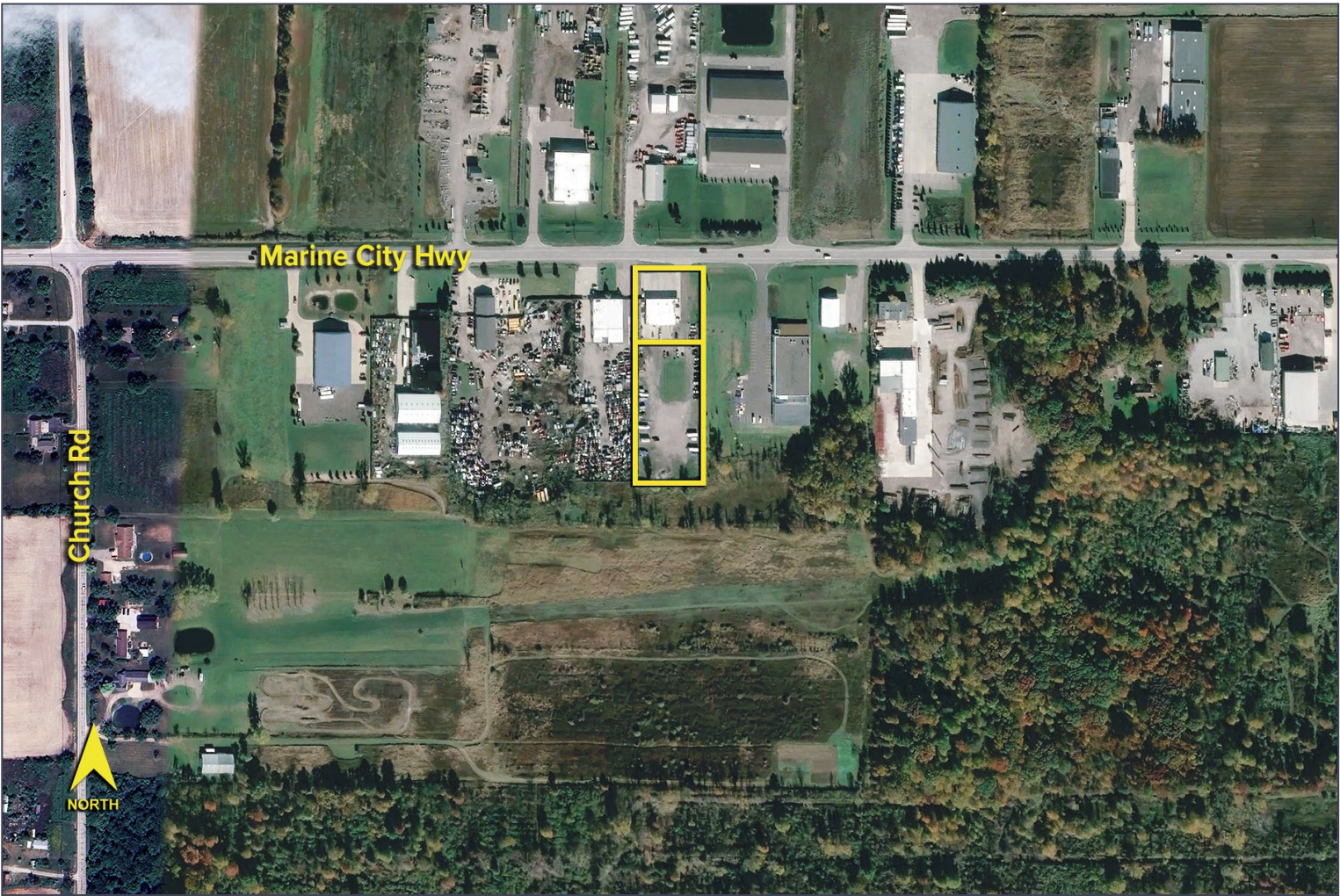
SIGNATURE ASSOCIATES
One Towne Square, Suite 1200
Southfield, MI 48076
www.signatureassociates.com

9317-9321 Marine City Highway – Ira Twp., Michigan

Industrial For Lease

3,016
Square Feet
AVAILABLE

Aerial



For more information, please contact:

PAUL SAAD
(248) 359 0652
psaad@signatureassociates.com

BEN WILKIEMEYER
(248) 359 0624
bwilkiemeyer@signatureassociates.com

SIGNATURE ASSOCIATES
One Towne Square, Suite 1200
Southfield, MI 48076
www.signatureassociates.com

Information is subject to verification and no liability for errors or omissions is assumed. Price is subject to change and listing withdrawal.