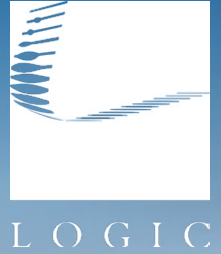


For Lease

W. Regency Way & S. Virginia St.



[Click for a Virtual Tour](#)

35 W. Regency Way
Suite B
Reno, NV 89509

Michael Keating, SIOR
Partner
775.386.9727
mkeating@logicCRE.com
S.0174942

Michael Dorn
Senior Associate
775.453.4436
mdorn@logicCRE.com
S.0189635

Listing Snapshot



\$1.85 MG*
Lease Rate



± 1,800 SF
Available Square Footage



Mixed-Use
Zoning

Property Highlights

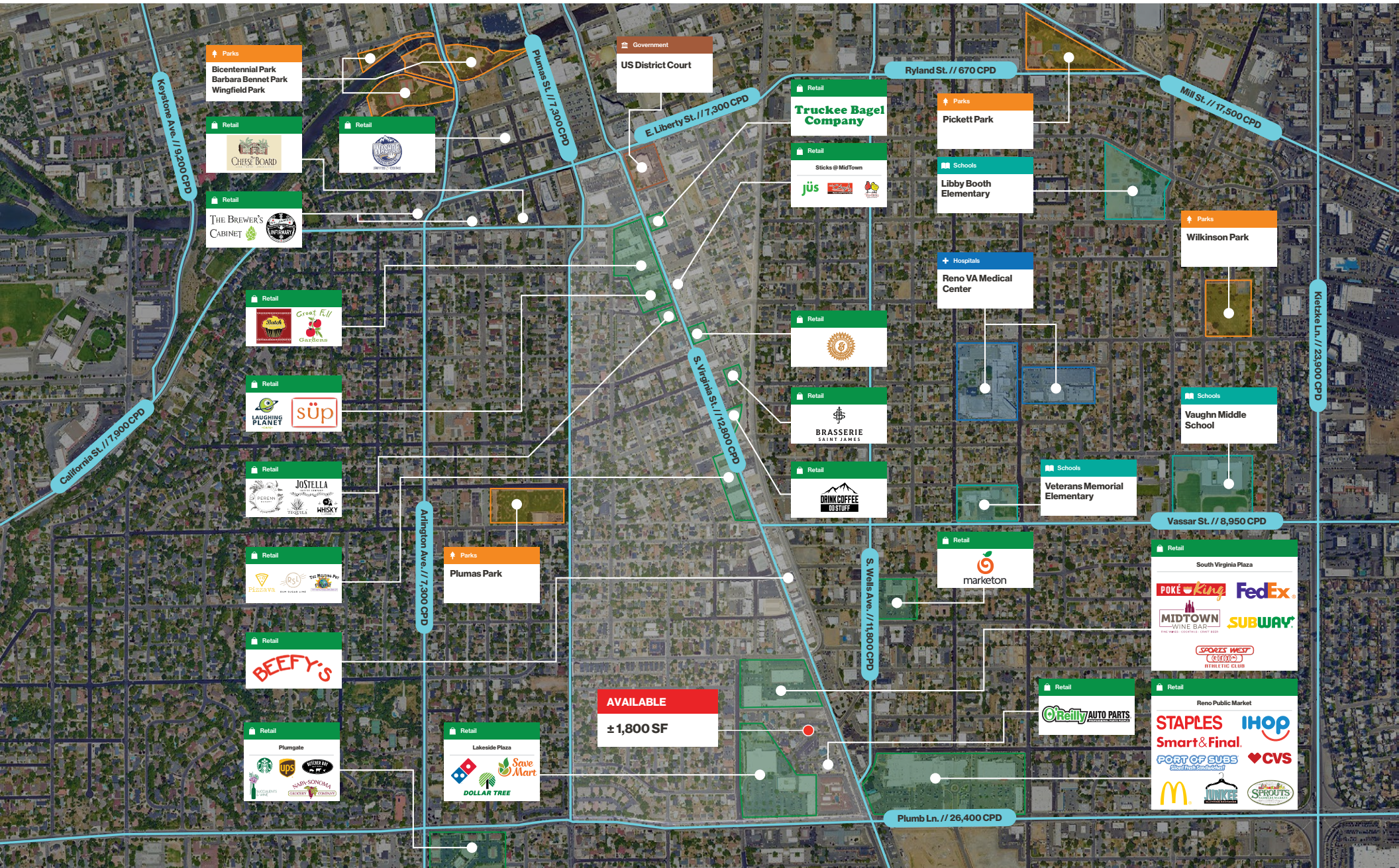
- Ideal professional office space
- Located in the coveted MidTown area
- High-end finishes
- Lofty, extraordinary two story suite in Midtown area with large upstairs patio

**Tenant responsible for phone/internet, power, and janitorial*

Demographics

	1-mile	3-mile	5-mile
2024 Population	25,477	124,152	239,850
2024 Average Household Income	\$81,646	\$91,266	\$96,757
2024 Total Households	12,182	54,628	101,544







AVAILABLE
± 1,800 SF

Downtown Reno

Retail

South Virginia Plaza

POKE King FedEx

MIDTOWN WINE BAR SUBWAY

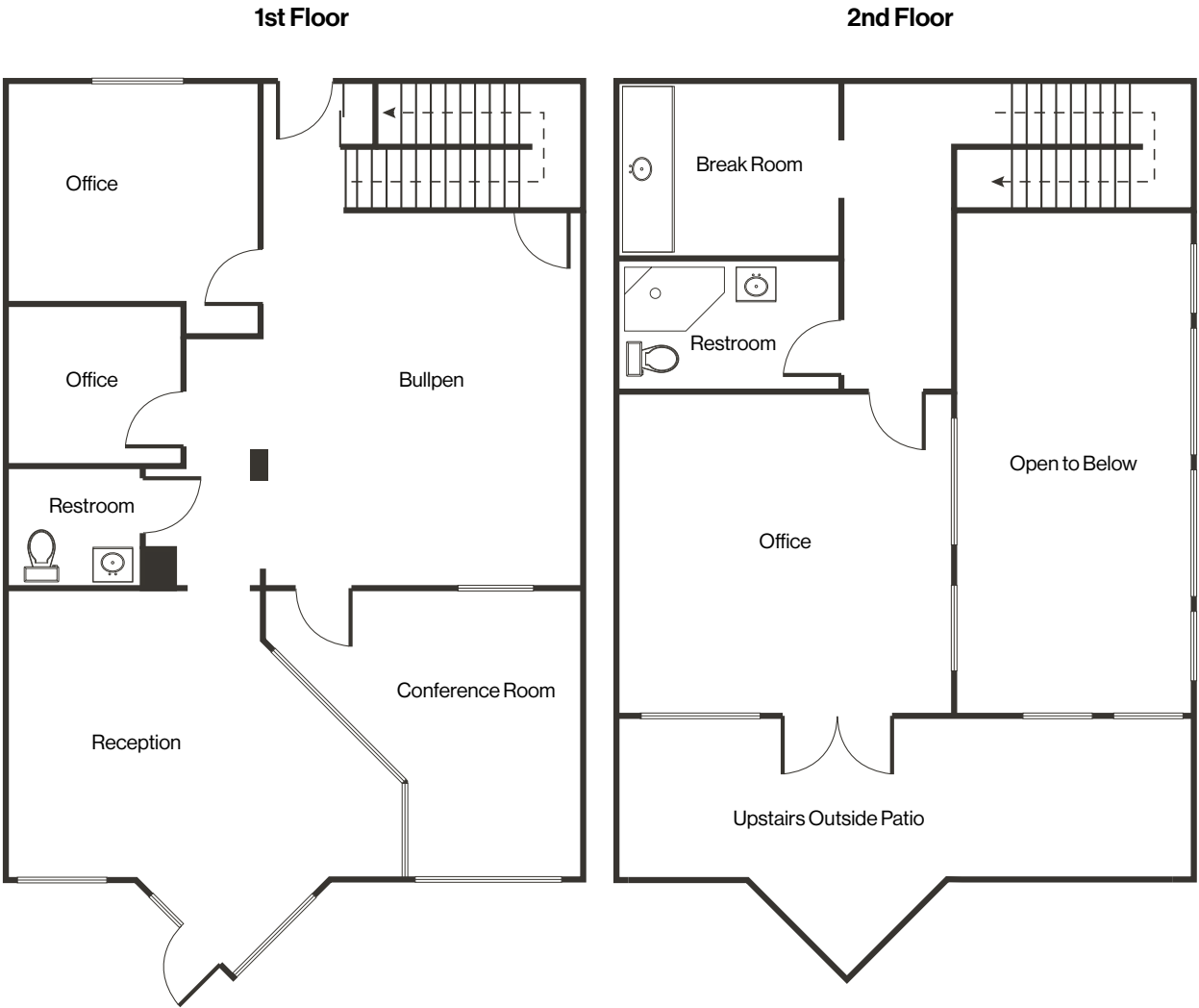
SPORTS WEST COUNTRY CLUB

BEEFY'S

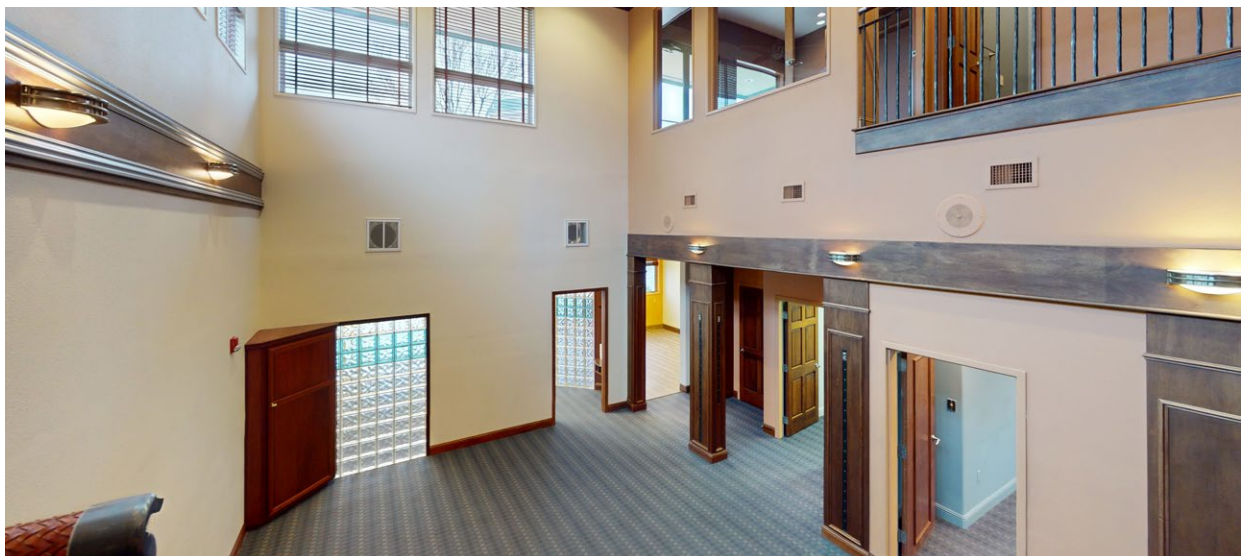
marketon



Floor Plan | Suite B | ± 1,800 SF



Property Photos



LOGIC Commercial Real Estate

Specializing in Brokerage and Receivership Services



Join our email list and
connect with us on LinkedIn

The information herein was obtained from sources deemed reliable; however LOGIC Commercial Real Estate makes no guarantees, warranties or representation as to the completeness or accuracy thereof.

For inquiries please reach out to our team.

Michael Keating, SIOR

Partner
775.386.9727
mkeating@logicCRE.com
S.0174942

Michael Dorn

Senior Associate
775.453.4436
mdorn@logicCRE.com
S.0189635