



OBSIDIAN
GROUP



Interchange Complex

For Lease

2335, 2355, 2361 MN- 36 | Roseville MN



CONTACT US

Andrei Bortnov
VP of Brokerage, CCIM
M: 612-702-6867
E: andrei@obsidiangroup.com

Sam Carter
Associate
M: 651-335-2110
E: sam@obsidiangroup.com

Interchange Complex

2335, 2355, 2361 MN- 36 | Roseville MN



Property Features

The Interchange is a three-property office complex having an address of 2335, 2355, and 2361 MN-36 W in Roseville approximately one mile away from the Rosedale Shopping Center. It's comprised of multiple tenant suites with three potential office vacancies with a build-to-suit office potential. It has excellent accessibility due to the proximity to Highway 36, Highway 35W and Highway 280. Its 152,000 VPD off of Highway 35W and being under 10 minutes to both downtown Minneapolis and downtown St. Paul allows this building a great opportunity for attracting new businesses and tenants.

Building Size

2335 (33,720 SF), 2355 (63,600 SF),
2361 (27,000 SF)

Available Sizes

1,082-4,322 SF

Lease Rate

\$12-14/SF

Lease Type

NNN

Tax/ CAM

2335: \$11.03, 2355: \$11.28, 2361: \$10.62

Year Built

2335 (1970), 2355 (2005), 2361 (1968)

Zoning

Office/ Business Park

Permitted Uses

Traditional office, community educational center, government facilities, art studio, medical and dental clinic, laboratory, and many more permitted uses.

General Highlights

- **Availability:** space is ready for immediate occupancy
- **Best Uses:** Traditional office (insurance, non-profit, real estate/ investment firm, law firm, counseling, medical) or community educational facility
- **Sprinkler System:** Yes
- **Elevators:** Yes
- **Loading:** Dock
- **HVAC:** fully heated and air conditioned
- **Floors:** Varies per building
- **Parking:** Surface, 350 spaces
- **Traffic Counts:** 152,000 VPD (on 35W)
- **Proximity to Highways:** less than 5 min to 35W and Hwy 36

CONTACT US

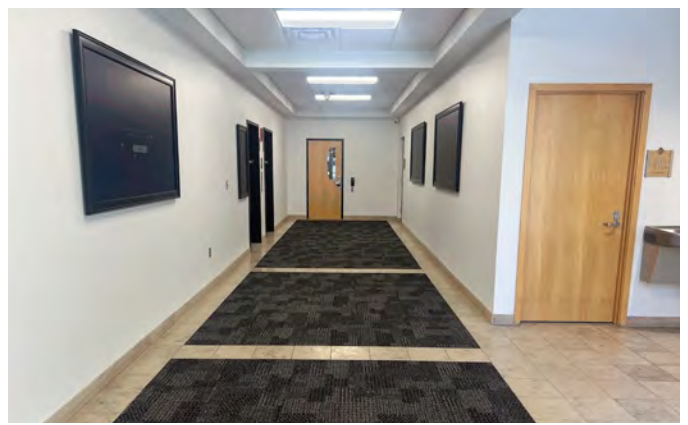
Andrei Bortnov
VP of Brokerage, CCIM
M: 612-702-6867
E: andrei@obsidiangroup.com

Sam Carter
Associate
M: 651-335-2110
E: sam@obsidiangroup.com



Interchange Complex

2335, 2355, 2361 MN- 36 | Roseville MN



CONTACT US

Andrei Bortnov
VP of Brokerage, CCIM
M: 612-702-6867
E: andrei@obsidiangroup.com

Sam Carter
Associate
M: 651-335-2110
E: sam@obsidiangroup.com



OBSIDIAN
GROUP

Interchange Complex

2335, 2355, 2361 MN- 36 | Roseville MN

Building 2355

SUITE 201

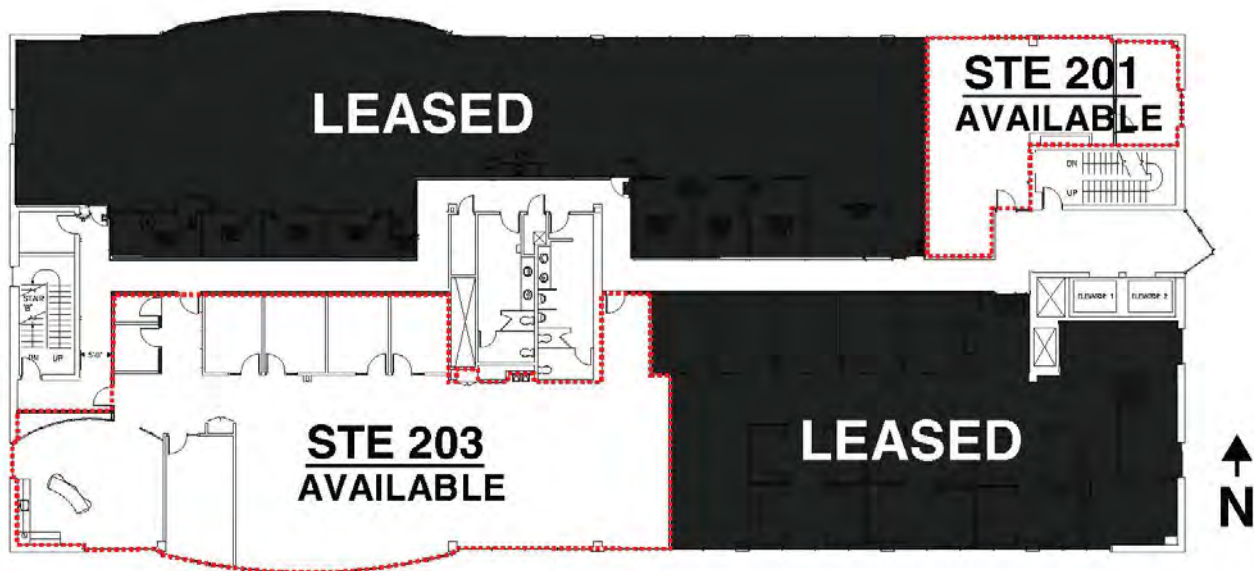
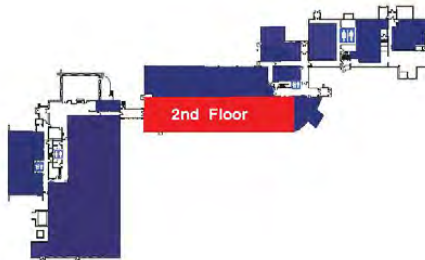
USABLE: 941 SF

RENTABLE: 1,082 SF

SUITE 203

USABLE: 3,758 SF

RENTABLE: 4,322 SF



CONTACT US

Andrei Bortnov
VP of Brokerage, CCIM
M: 612-702-6867
E: andrei@obsidiangroup.com

Sam Carter
Associate
M: 651-335-2110
E: sam@obsidiangroup.com



OBSIDIAN
GROUP

Interchange Complex

2335, 2355, 2361 MN- 36 | Roseville MN

Building 2361

**BUILDING RENOVATIONS
UNDERWAY**

**SCHEDULED TO BE COMPLETED
JULY 2024**

SEE RENDERINGS NEXT PAGE

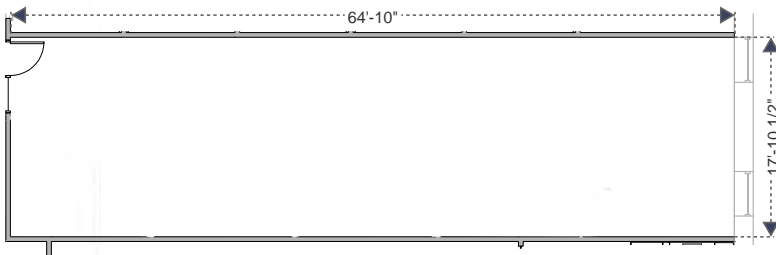


SUITE 105

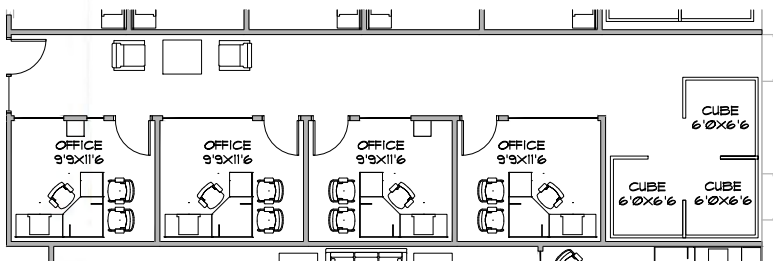
USABLE: 1,168 SF

RENTABLE: 1,343 SF

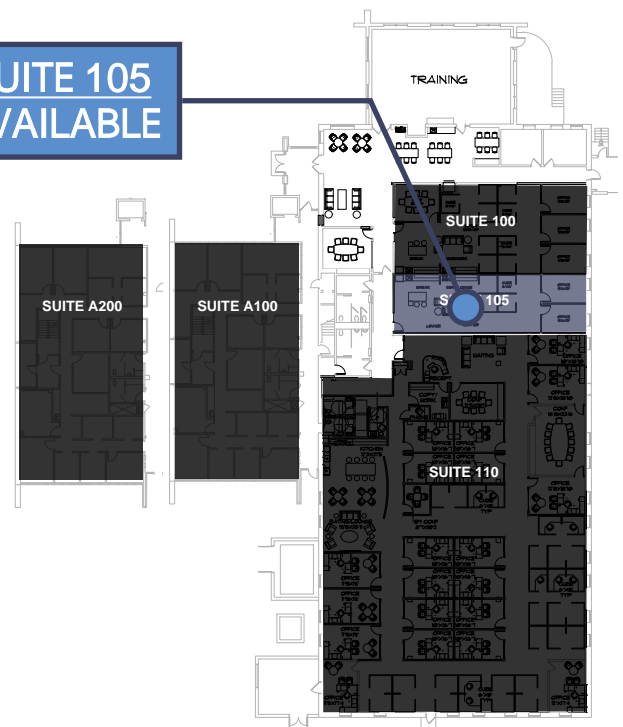
OPTION: FULLY FURNISHED



CONCEPTUAL LAYOUT



**SUITE 105
AVAILABLE**



CONTACT US

Andrei Bortnov
VP of Brokerage, CCIM
M: 612-702-6867
E: andrei@obsidiangroup.com

Sam Carter
Associate
M: 651-335-2110
E: sam@obsidiangroup.com



OBSIDIAN
GROUP

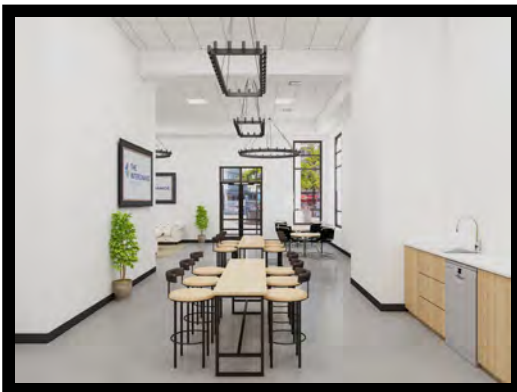
Interchange Complex

2335, 2355, 2361 MN- 36 | Roseville MN

Building 2361

**BUILDING RENOVATIONS
UNDERWAY**

**SCHEDULED TO BE COMPLETED
JULY 2024**



CONTACT US

Andrei Bortnov
VP of Brokerage, CCIM
M: 612-702-6867
E: andrei@obsidiangroup.com

Sam Carter
Associate
M: 651-335-2110
E: sam@obsidiangroup.com



Interchange Complex

2335, 2355, 2361 MN- 36 | Roseville MN

Building 2361

EXTERIOR UPDATES 2024



CONTACT US

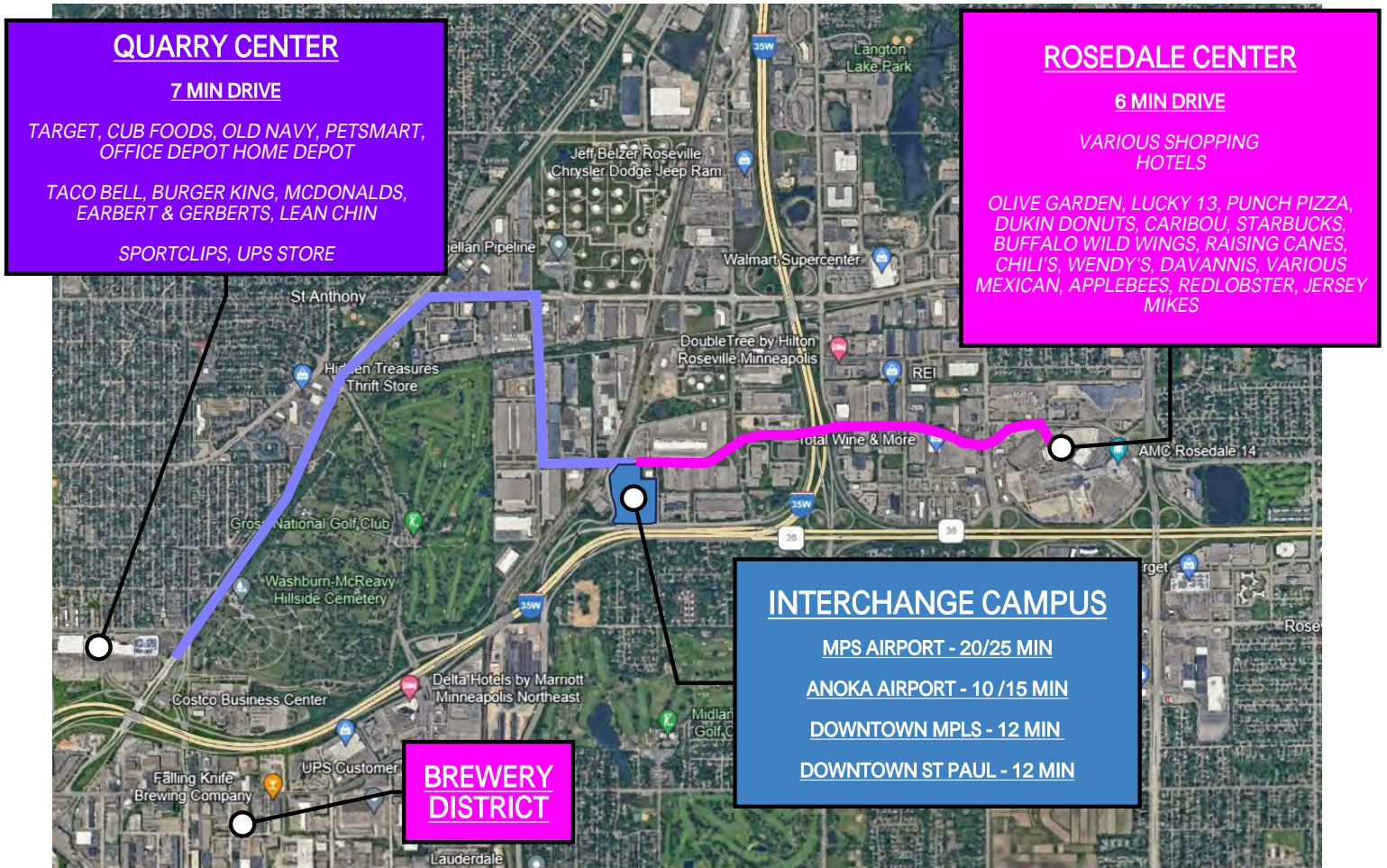
Andrei Bortnov
VP of Brokerage, CCIM
M: 612-702-6867
E: andrei@obsidiangroup.com

Sam Carter
Associate
M: 651-335-2110
E: sam@obsidiangroup.com



Interchange Complex

2335, 2355, 2361 MN- 36 | Roseville MN



CONTACT US

Andrei Bortnov
VP of Brokerage, CCIM
M: 612-702-6867
E: andrei@obsidiangroup.com

Sam Carter
Associate
M: 651-335-2110
E: sam@obsidiangroup.com

This information has been obtained from sources believed reliable, but has not been verified for accuracy or completeness. Any projections, opinions, or estimates are subject to uncertainty. The information may not represent the current or future performance of the property. You and your advisors should conduct a careful, independent investigation of the property and verify all information. Any reliance on this information is solely at your own risk.

Interchange Complex

2335, 2355, 2361 MN- 36 | Roseville MN



Demographics

	1 Mile	3 Mile
Population	1,963	107,398
Households	862	44,729
Median Age	49.50	34
Median HH Income	\$97,767	\$69,106
Daytime Employees	10,442	85,263
Population Growth '20-'25	up 1.07%	up 2.61%
Household Growth '20-'25	up 0.70%	up 2.31%

CONTACT US

Andrei Bortnov

VP of Brokerage, CCIM

M: 612-702-6867

E: andrei@obsidiangroup.com

Sam Carter

Associate

M: 651-335-2110

E: sam@obsidiangroup.com

This information has been obtained from sources believed reliable, but has not been verified for accuracy or completeness. Any projections, opinions, or estimates are subject to uncertainty. The information may not represent the current or future performance of the property. You and your advisors should conduct a careful, independent investigation of the property and verify all information. Any reliance on this information is solely at your own risk.