

FOR SALE
FLEX/COMMERCIAL

635 Old Highway 30
MOUNTAIN HOME, ID 83647

STARK
ACCELERATORS
COMMERCIAL REAL ESTATE

4,650± SF FLEX/COMMERCIAL AVAILABLE FOR SALE



PROPERTY DESCRIPTION

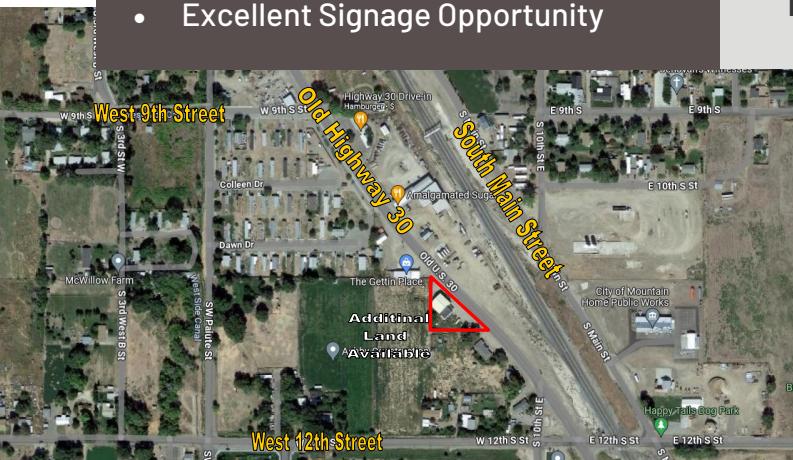
- 4,650± SF Flex/Commercial Property For Sale with additional land available
- Standalone Building with office area in back on .427± Acres
- 3 Grade Level Doors with drive-thru possible
- Additional 2 Acres available at \$75,000 per acre

PROPERTY HIGHLIGHTS

- Located on Old Highway 30 in Mountain Home between West 9th Street and West 12th Street
- 230± Feet of frontage on Old Highway 30
- Ideal Automotive or Repair facility or Flex Storage/Warehouse with Retail component
- Excellent Signage Opportunity

OFFERING SUMMARY

BUILDING SIZE	APN
4,650± SF	RP03506E364650
PRICE/SF	ACRES
\$375,000	.427±
ZONING	Year Built
Rural Commercial	1956



JOHN OLSEN



Office: 208.722.2400
Cell: 208.870.0405

ID LICENSE # : SP44227