

EL SEGUNDO'S PREMIER LOW-RISE ENVIRONMENT

EL SEGUNDO

OPEN



300 - 390 N PACIFIC COAST HIGHWAY

NEWMARK

LPCWEST
LINCOLN PROPERTY COMPANY

 **ROCKWOOD**

OPEN El Segundo reinvents the office, creating a sunlit campus where interior workspaces merge seamlessly with spacious Wifi enabled outdoor areas designed for community, collaboration and creativity.

A 356,117 square foot campus located in a flourishing center of design, technology and media, **OPEN** El Segundo offers tenants access to lively local restaurants and cafes, biking to Manhattan Beach and Metro connection to Los Angeles, LAX and West LA.





Three, 3-story office buildings with large floorplates;
two single-story retail buildings



Six casual restaurants and cafes



Landscaped central courtyard anchored by
Silverback Coffee of Rwanda provides spacious outdoor
seating areas equipped with Wifi and speakers



Bicycle storage/shop



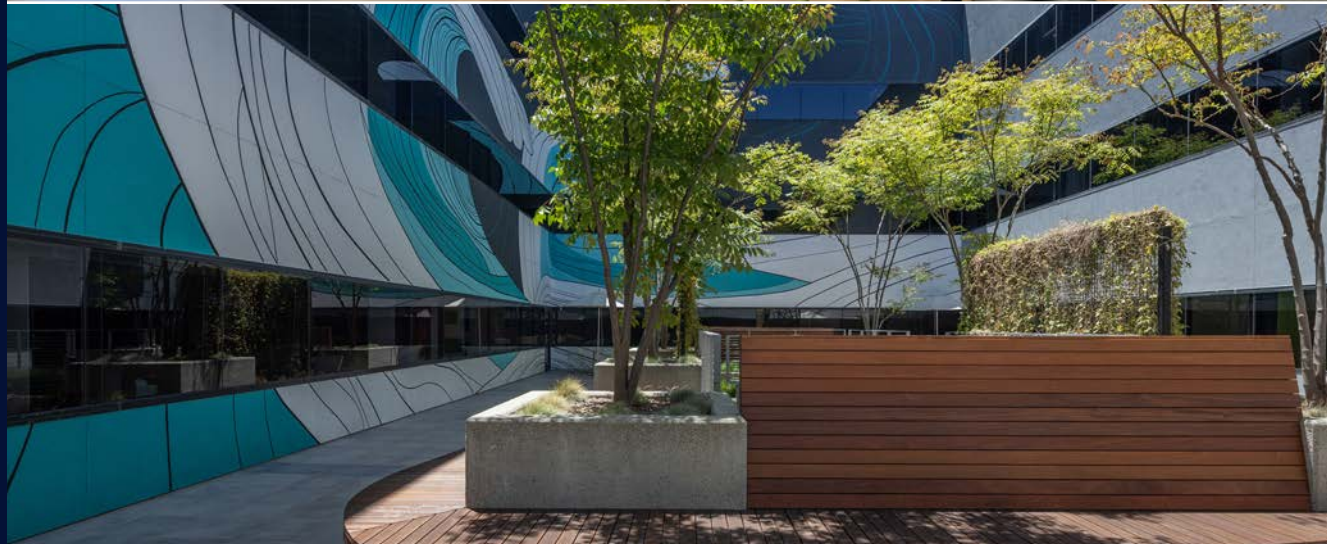
Ample surface and subterranean parking
with direct building access



Tenant amenity center



Conference room facility



APPROXIMATELY 20,000 SF
OF CONTIGUOUS SPACE AVAILABLE



New
Spec Suites
ranging from
2,000 SF - 5,000 SF

ON-SITE AMENITIES



EL SEGUNDO

OPEN

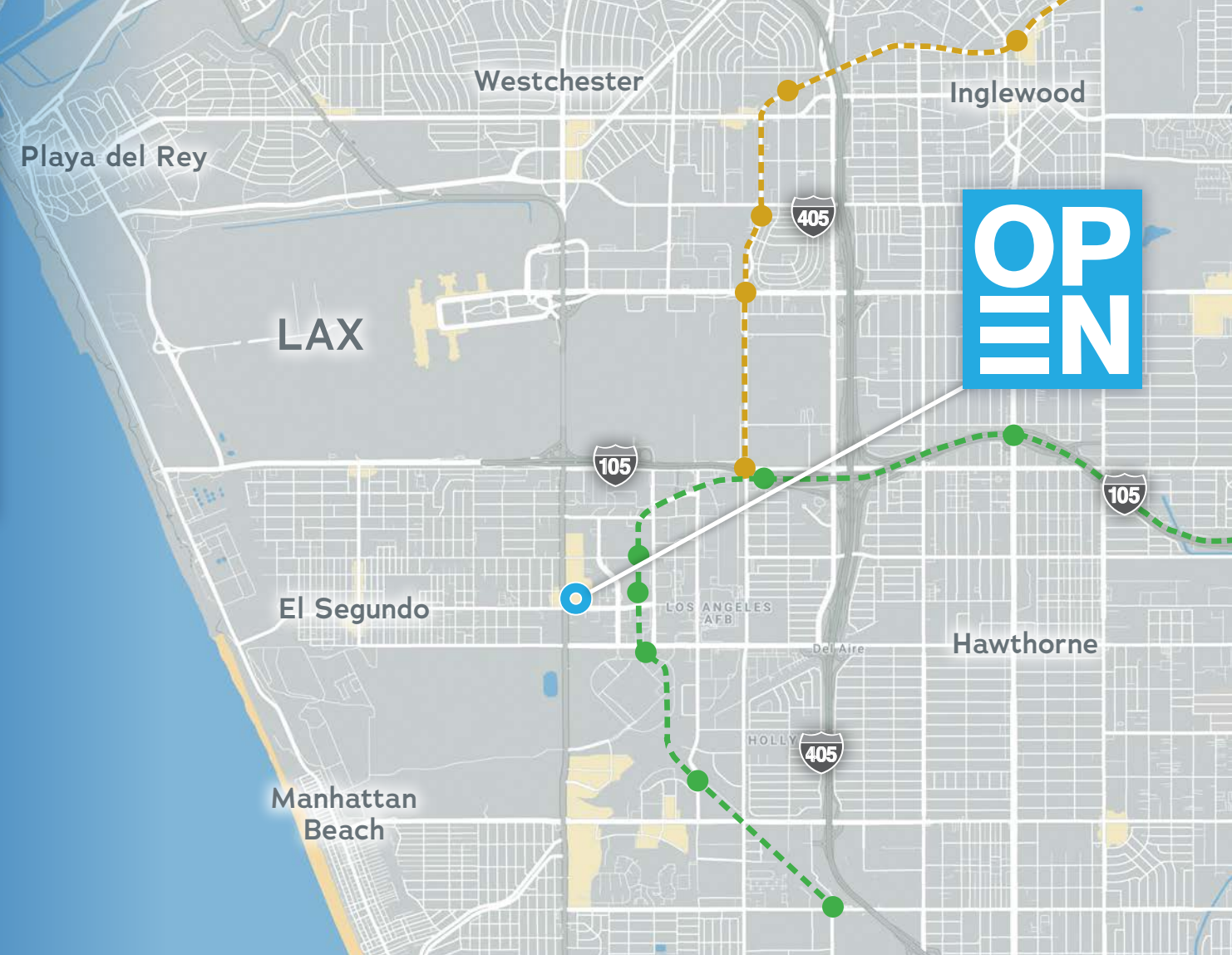
Corporate License #01355491

Procuring broker shall only be entitled to a commission, calculated in accordance with the rates approved by our principal only if such procuring broker executes a brokerage agreement acceptable to us and our principal and the conditions as set forth in the brokerage agreement are fully and unconditionally satisfied. Although all information furnished regarding property for sale, rental, or financing is from sources deemed reliable, such information has not been verified and no express representation is made nor is any to be implied as to the accuracy thereof and it is submitted subject to errors, omissions, change of price, rental or other conditions, prior sale, lease or financing, or withdrawal without notice and to any special conditions imposed by our principal.

nmrk.com

NEWMARK

LOCATION



BILL BLOODGOOD

Executive Managing Director

Newmark

t 310-491-2039 | bill.bloodgood@nmrk.com

CA RE License #01152045

ALY POLO

Associate

Newmark

t 310-491-2071 | aly.polo@nmrk.com

CA RE License #01966499

KENT HANDLEMAN

Senior Vice President

LPC West

t 213-362-9080 | khandleman@lpc.com

CA RE License #01240201

DOUGLAS BROWN

Vice President

LPC West

t 213-542-8247 | dbrown@lpc.com

CA RE License #01913265

LPCWEST
LINCOLN PROPERTY COMPANY

 **ROCKWOOD**