



OFFICE SPACE FOR LEASE

2401 S PLUM GROVE RD, PALATINE, IL



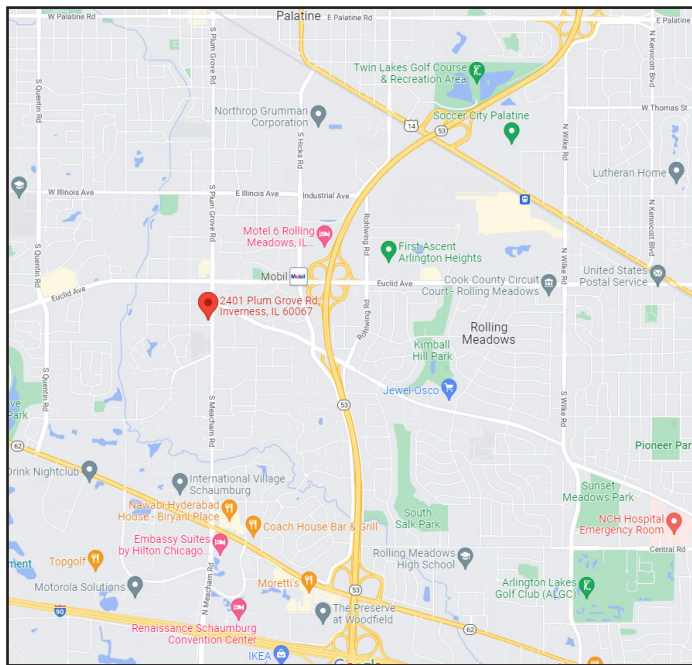
BUILDING FEATURES:

- 2,000 -18,144 SF Available Immediately For Lease
- Attractive Atrium Building w/ Skylights and Elevator
- Easy Access to Route 53/I-90 via Euclid
- Building Signage Available
- New Parking Lot with 4.5 per 1,000 SF
- Home to American Porfolio Mtg & Matrix Systems
- Located 1 Mile North of New Meacham Rd Full Interchange & I-90
- **INTERIOR REFRESH COMPLETED IN 2022!!!!**

- Comcast High Speed Internet!
- 24-Hour Access & ATM on site
- Tenant Controlled Heating and Air Conditioning!
- Close Proximity to Hotel and Restaurants
- Great Layouts for Immediate Occupancy
- **Rental Rate: \$16.50-\$17.75 PSF MG**

AVAILABLE SPACE:

SUITE	SIZE (SF)	DESCRIPTION
100	2,000-18,144 SF	Former Consumers Credit Union Space **High End Finishes & Furniture Available**
200	3,630 SF	Corner Unit with Many Upgrades
201	4,737 SF	6 Private Offices, Reception, Area, Kitchen, Open Space & Conference Room
200 & 201	8,367 SF	Space from 2,000-7,446 SF



FOR MORE INFORMATION:

RANDY OLCZYK
Direct: 847.246.9611

randy@chicagolandcommercial.com

LEASING | SALES | TENANT ADVISORY | MANAGEMENT

RAY OKIGAWA
Direct: 847.246.9632

ray@chicagolandcommercial.com



Chicagoland
Commercial
REAL ESTATE

4811 Emerson Ave Suite 112, Palatine, IL

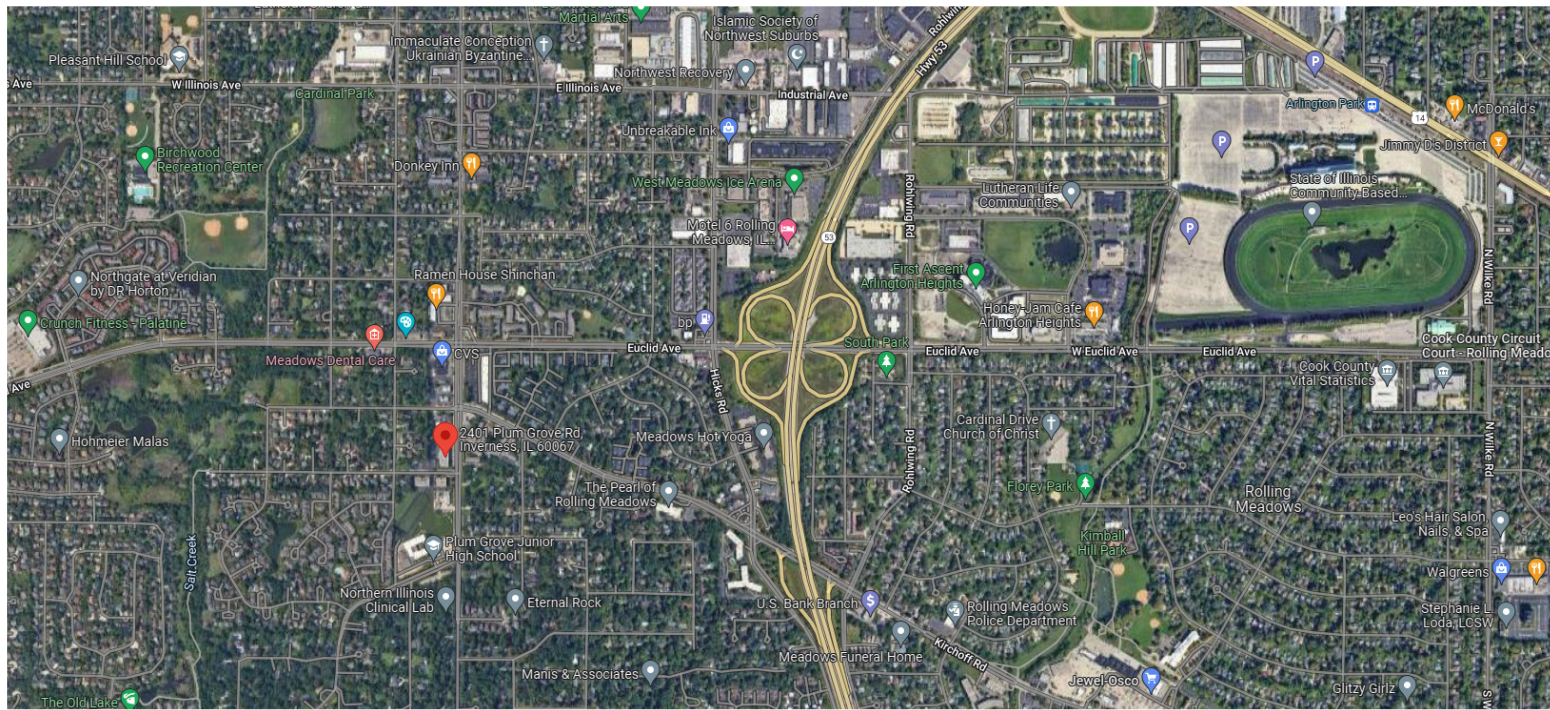
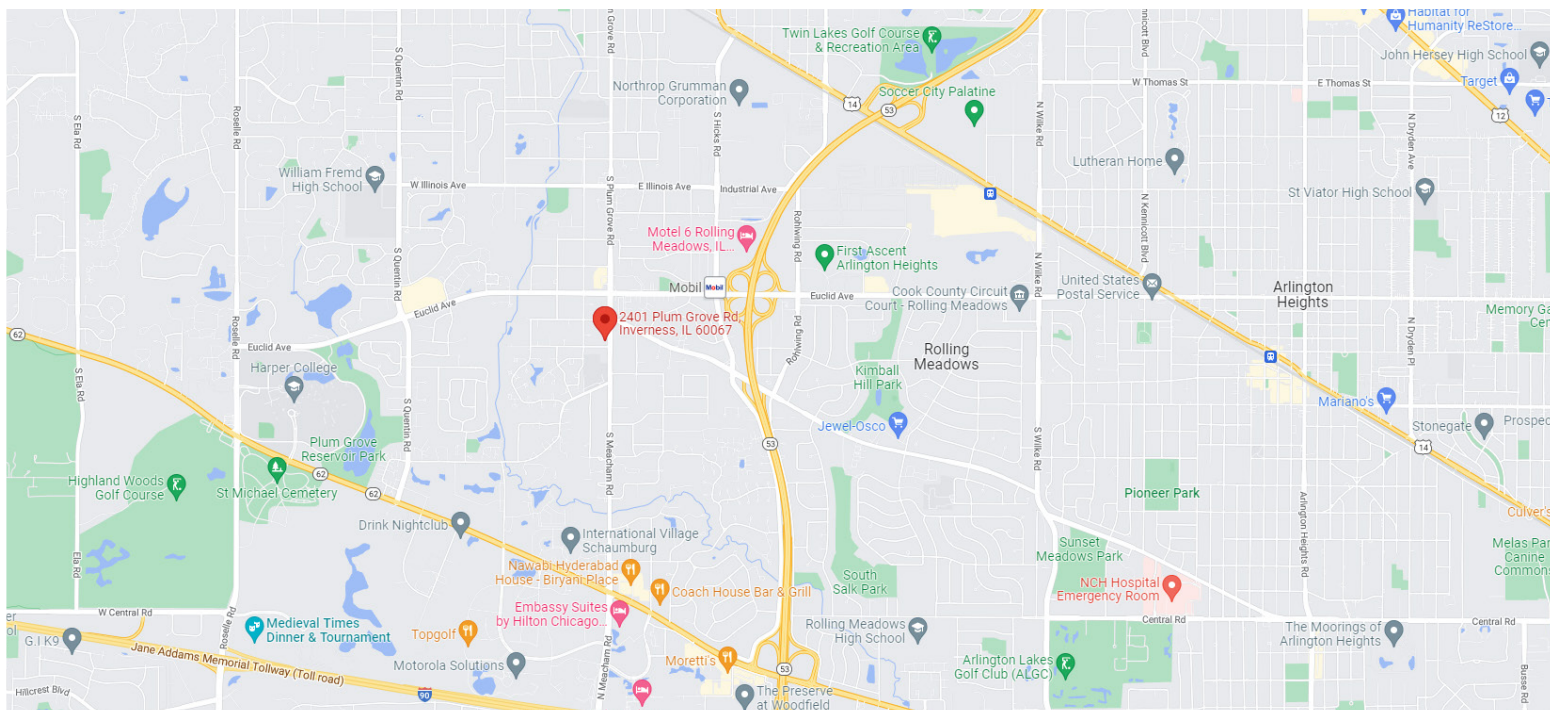
www.chicagolandcommercial.com



OFFICE SPACE FOR LEASE

2401 S PLUM GROVE RD, PALATINE, IL

AREA MAPS



FOR MORE INFORMATION:

RANDY OLCZYK
Direct: 847.246.9611
randy@chicagolandcommercial.com

RAY OKIGAWA
Direct: 847.246.9632
ray@chicagolandcommercial.com



Chicagoland
Commercial
REAL ESTATE

4811 Emerson Ave Suite 112, Palatine, IL

LEASING | SALES | TENANT ADVISORY | MANAGEMENT

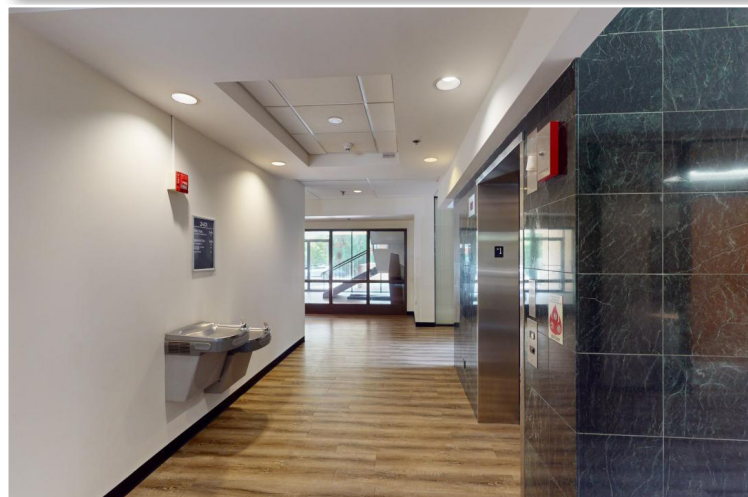
www.chicagolandcommercial.com



OFFICE SPACE FOR LEASE

2401 S PLUM GROVE RD, PALATINE, IL

PROPERTY PHOTOS



FOR MORE INFORMATION:

RANDY OLCZYK
Direct: 847.246.9611
randy@chicagolandcommercial.com

RAY OKIGAWA
Direct: 847.246.9632
ray@chicagolandcommercial.com



4811 Emerson Ave Suite 112, Palatine, IL

LEASING | SALES | TENANT ADVISORY | MANAGEMENT

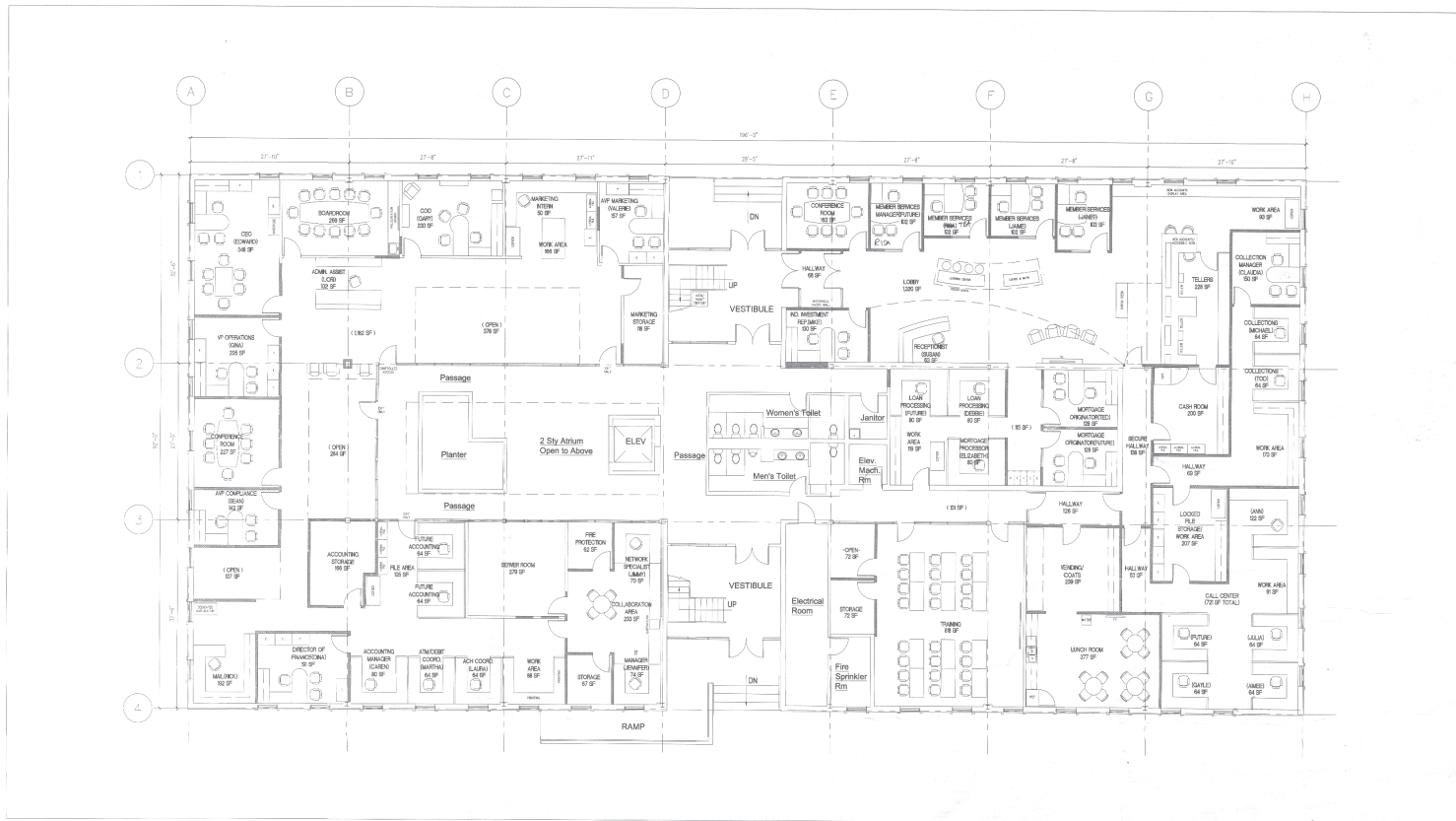
www.chicagolandcommercial.com



OFFICE SPACE FOR LEASE

2401 S PLUM GROVE RD, PALATINE, IL

FIRST FLOOR PLAN (SUITE 100) 2,000-18,144 SF AVAILABLE



MEADOWS CREDIT UNION
FIRST FLOOR PLAN(OPTION 4)
ROLLING MEADOWS, IL 13,380 SF
SCALE: 1/16" = 1'-0" 03-01-16

OUR BUSINESS IS BUILDING YOURS
LaMACCHIA
GROUP

**SPACE CAN EASILY BE DIVIDED FROM 2,000-18,144 SF

FOR MORE INFORMATION:

RANDY OLCZYK
Direct: 847.246.9611
randy@chicagolandcommercial.com

RAY OKIGAWA
Direct: 847.246.9632
ray@chicagolandcommercial.com



4811 Emerson Ave Suite 112, Palatine, IL



OFFICE SPACE FOR LEASE

2401 S PLUM GROVE RD, PALATINE, IL

SECOND FLOOR LAYOUT (SUITE 200 & 201) 2,000-18,144 SF



SUITE #200= 3,630 SF

SUITE #201= 4,737 SF

COMBINED = 8,367 SF

****SPACE CAN EASILY BE DIVIDED FROM 2,000- 8,367 SF**

FOR MORE INFORMATION:

RANDY OLCZYK
Direct: 847.246.9611
randy@chicagolandcommercial.com

RAY OKIGAWA
Direct: 847.246.9632
ray@chicagolandcommercial.com



4811 Emerson Ave Suite 112, Palatine, IL