



DIAMOND  
PROPERTIES

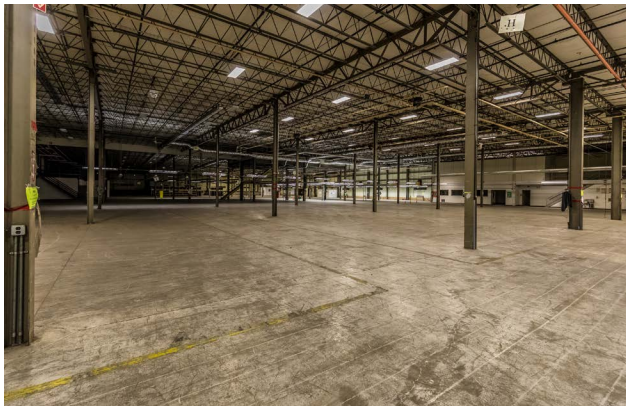
## INDUSTRIAL WAREHOUSE

511 Fishkill Ave. | Beacon, NY



### SPACE FEATURES

- Prime Industrial Warehouse & Distribution
- 3 loading docks (6 potential) and 1 drive-in
- 23 ft clear ceilings
- Ample Parking



For more information about features & amenities, visit [dpmgt.com](http://dpmgt.com).

### AVAILABLE SPACE

#### WAREHOUSE/DISTRIBUTION:

32,400 SF - 66,696 SF

\$9.50 NNN

Prime Industrial warehouse and distribution building on NYS Route 52, (Fishkill Avenue). The location is in close proximity to I84, I87, NYS Route 9, the Taconic State PKWY and Stewart International Airport.

For more information, visit  
[dpmgt.com](http://dpmgt.com) or contact:

**Mark Blandford**

914-773-6242  
[mark@dpmgt.com](mailto:mark@dpmgt.com)

**CJ Rockett**

914-773-6264  
[cjrockett@dpmgt.com](mailto:cjrockett@dpmgt.com)

The information contained herein has been obtained through sources deemed reliable but cannot be guaranteed as to its accuracy. Any information of special interest should be obtained through independent verification.

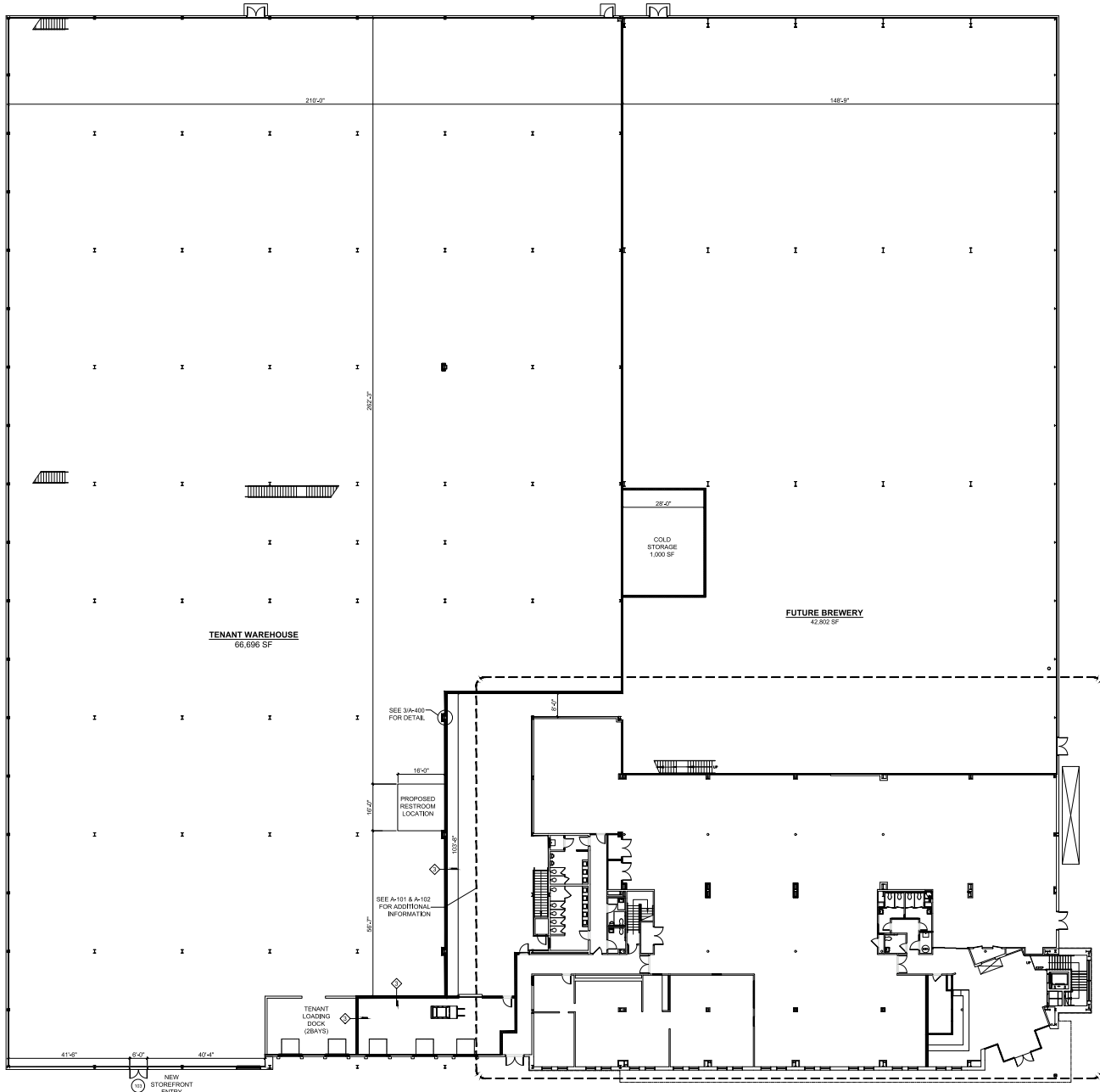


DIAMOND PROPERTY  
MANAGEMENT

# INDUSTRIAL WAREHOUSE

511 Fishkill Ave. | Beacon, NY

## Floor Plan



For more information, visit  
[dpmgt.com](http://dpmgt.com) or contact:

**Mark Blandford**  
914-773-6242  
[mark@dpmgt.com](mailto:mark@dpmgt.com)

**CJ Rockett**  
914-773-6264  
[cjrockett@dpmgt.com](mailto:cjrockett@dpmgt.com)

The information contained herein has been obtained through sources deemed reliable but cannot be guaranteed as to its accuracy. Any information of special interest should be obtained through independent verification.



511 Fishkill Ave. | Beacon, NY

A map of the New York City area showing the route from New York Stewart Int'l Airport to Fishkill, NY. The route is highlighted in yellow and passes through Newburgh, Beacon, and Fishkill. A red pin marks the destination at 511 Fishkill Avenue. The map includes labels for various locations such as Orange Lake, Gardnertown, Balmville, Newburgh, Beacon, Fishkill, and Glenham. It also shows major highways like I-84, I-94, and I-9, as well as local roads like Rock Cut Rd, Lakeside Rd, and South St. Green areas represent parks and wildlife, including Cronomer Hill Park and Baxtertown Woods Wildlife.

**CJ Rockett**  
914-773-6264  
cjrockett@dpmgt.com

The information contained herein has been obtained through sources deemed reliable but cannot be guaranteed as to its accuracy. Any information of special interest should be obtained through independent verification.