

FOR LEASE OFFICE SPACE



425 W. Central Avenue, Ste. 101A | Lompoc, CA

Multi-tenant Office Building located at a signalized intersection on West Central Ave and only 1/4 mile from H Street (Highway 1). The building was constructed in 2007 and is elevator-served with ample parking.

Jerry Schmidt
805.928.2800 ext. 107
Jerry@PacificaCRE.com
Lic #0095042

Pat Palangi
805.928.2800 ext. 105
Pat@PacificaCRE.com
Lic #01105680

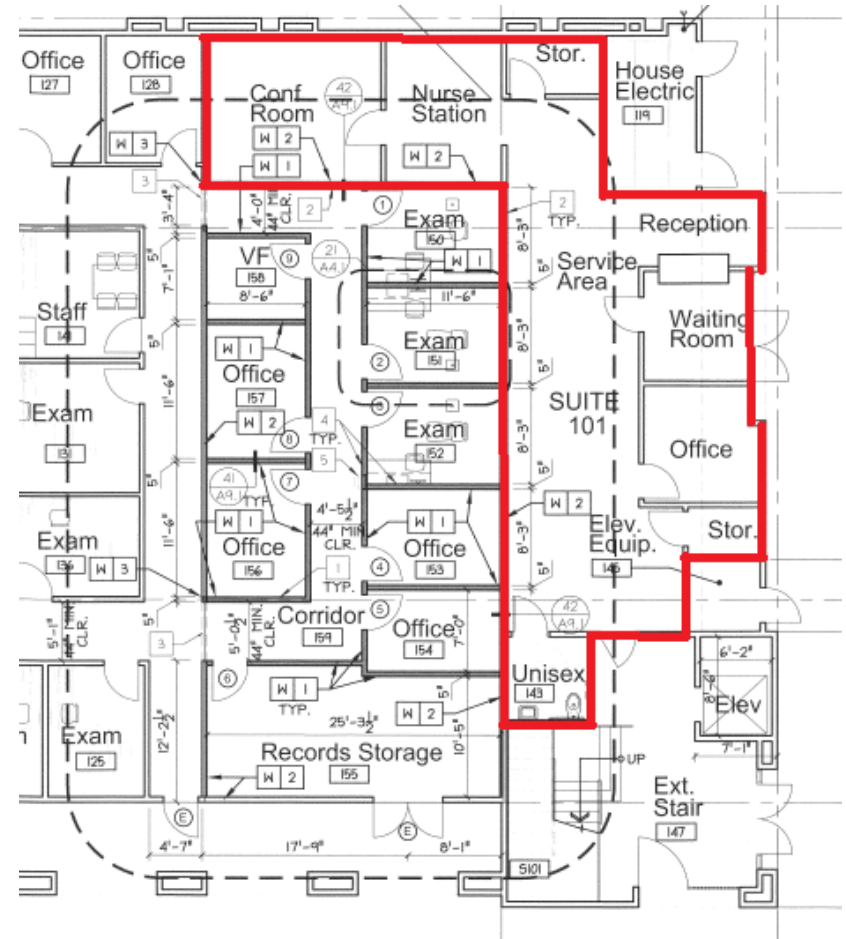
Mike Kelly
805.928.2800 ext. 113
Mike@PacificaCRE.com
Lic #01800988

PO Box 250 | Santa Maria, CA 93456 | PacificaCommercialRealty.com

Information contained herein has been obtained from the owner of the property or from other sources deemed reliable. We have no reason to doubt its accuracy, but we do not guarantee it.



FOR LEASE 425 W. Central Avenue, Ste. 101A | Lompoc, CA



LEASE DETAILS	
Lease Rate	\$1.35/SF/Month, NNN
Suite Size	±1,370 SF
Building Size	±18,736 SF
Year Built	2007
Zoning	PCD (Planned Commercial Development)
APN	093-450-049

Jerry Schmidt
 805.928.2800 ext. 107
 Jerry@PacificaCRE.com
 Lic #0095042

Pat Palangi
 805.928.2800 ext. 105
 Pat@PacificaCRE.com
 Lic #01105680

Mike Kelly
 805.928.2800 ext. 113
 Mike@PacificaCRE.com
 Lic #01800988



PO Box 250 | Santa Maria, CA 93456 | PacificaCommercialRealty.com

Information contained herein has been obtained from the owner of the property or from other sources deemed reliable. We have no reason to doubt its accuracy, but we do not guarantee it.