

This map was prepared for Assessment & Taxation purposes only and was NOT prepared nor is it suitable for legal, engineering or surveying purposes.

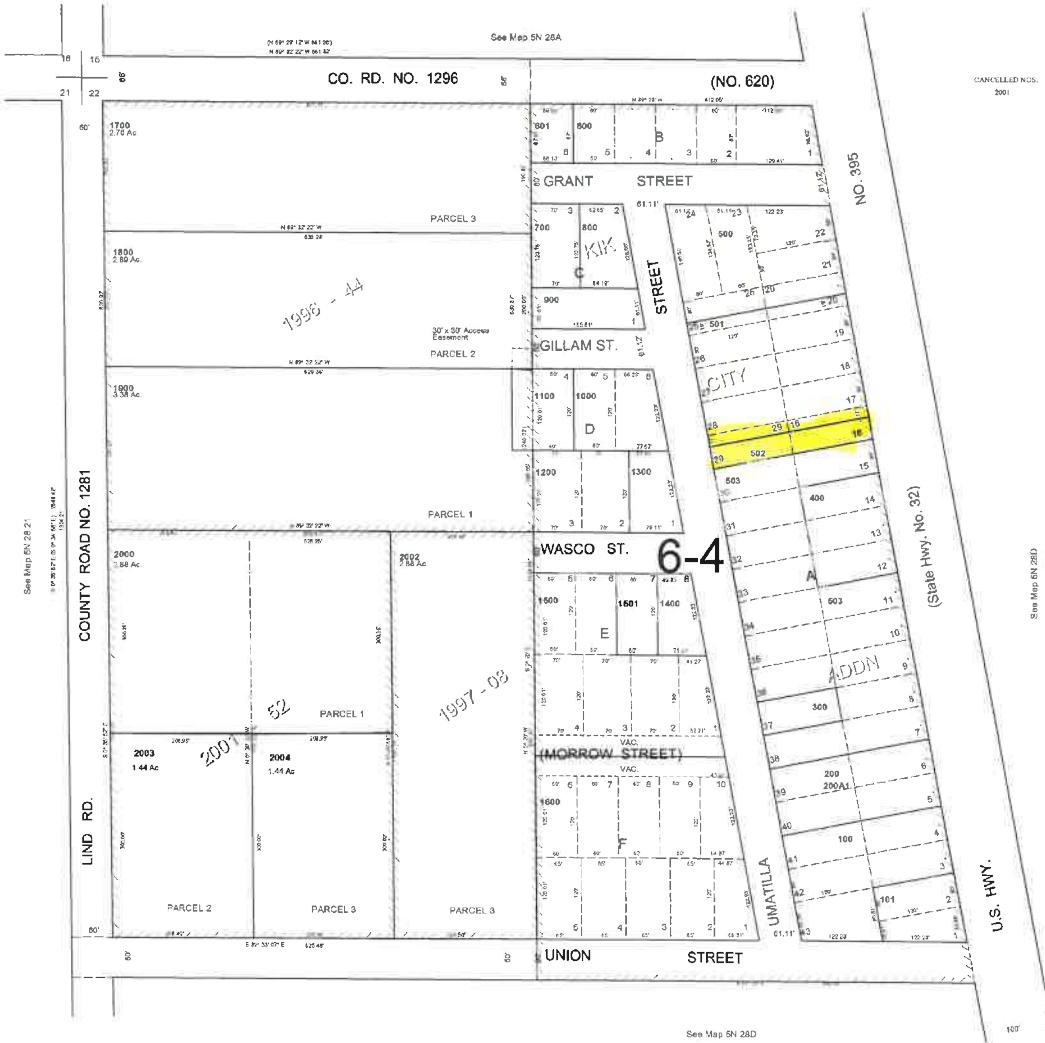


NW 1/4 NW 1/4 SEC 22 T 5N R 28 E WM UMATILLA COUNTY

5N2822BB

SCALE: 1" = 100'

AERIAL PHOTO NO. NZ-1P-67



CANCELLED NOS.
2001

See Map 5N 28D

Revised: 7/12/11

5N2822BB