

A wide-angle photograph of the interior of the Cheyenne Saloon. The room is filled with patrons, many seated at long wooden tables and others standing. The ceiling is high and features ornate, stained-glass light fixtures. A band is performing on a stage in the center, and a balcony with a railing is visible in the background. The overall atmosphere is warm and lively.

Lincoln

CHEYENNE SALOON

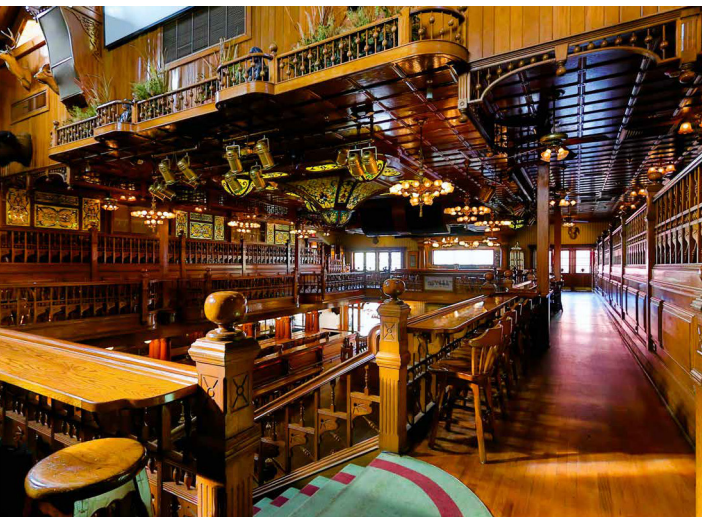
— IN ORLANDO'S SUPER BLOCK —



CHEYENNE SALOON

Located in the heart of Orlando, The Cheyenne Saloon is located on Church Street and boasts over 17,000 square feet of event space.

The handcrafted wood interior and ornate décor is the perfect backdrop for a Restaurant, Brewery, Winery, Entertainment Complex or Music Venue. This well-known Orlando structure is in the epicenter of the downtown entertainment district and a quick walk to the Amway Center, Dr. Phillips Center for Performing Arts, Amway, Exploria Stadium, Camping World Stadium, the Central Business District, University of Central Florida and Valencia college Downtown Campus (7,000 students), and numerous hotels and residential buildings.



PROPERTY HIGHLIGHTS

- Cheyenne Saloon offers over 17,000 SF of Retail Event Space
- Perfect for a Restaurant, Brewery, Winery, Entertainment Complex or Music Venue
- Exterior area can be extended for additional venue / patio space
- One-of-a-kind space in the downtown core
- Attached to the Bumby Arcade Food Hall, 240 apartments, 400,000 SF of office space, 160 hotel rooms, and multiple retail spaces
- Located in Orlando's Super Block
- Space offers two (2) kitchens with walk-in freezers
- Large delivery area
- Spacious stage
- Sound / lighting system
- Terrace overlooking Church Street District
- Five (5) separate bar areas; two run the entire perimeter of space
- Separate restaurant / dining area
- Upper level parlor area





HISTORY

The Cheyenne Saloon and Opera House opened in the early 1980's at Church Street Station in Orlando and was the most popular showroom in Orlando's most successful nighttime attraction. In addition to drawing nightly crowds to hear the Cheyenne Stampede perform, the Nashville Network filmed a television series with Country music's greatest stars, aptly named "Church Street Station".

Iconic country artists like George Jones, Little Jimmy Dickens, Tammy Wynette, Porter Wagoner, Tanya Tucker, Charley Pride and Roger Miller all made appearances, as did rising stars Travis Tritt, Alan Jackson and Garth Brooks.

While concerts recorded for television often used nondescript settings such as a dark theater or soundstage, there was no mistaking the Cheyenne Saloon. The club's three levels of ornate woodwork (including the bars, stage and dance floor) were created from 250,000 feet of golden oak. Stained glass and opulent chandeliers further added to the aesthetic, which certainly translated well to the television screen.

Since its closure, The Cheyenne Saloon and Opera House has been actively used as a private event space for weddings, corporate events and live music concerts.



NOTABLE ORLANDO RANKINGS&ACCOLADES

#1

Florida's Fastest
Growing MSA
2.7M RESIDENTS

#1

No. 1 in the Country
For Job Growth
(BLS, 2015-2018)

#1

No. 1 for STEM Job
Growth in the U.S.
(Forbes, 2018)

#5

OIA No. 5
Busiest Airport



Over \$10 Billion in
Infrastructure Investments
(Orlando Economic
Development)

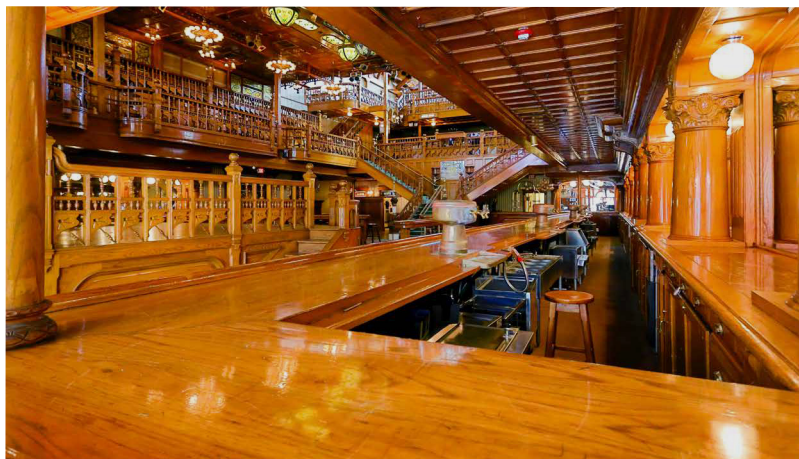
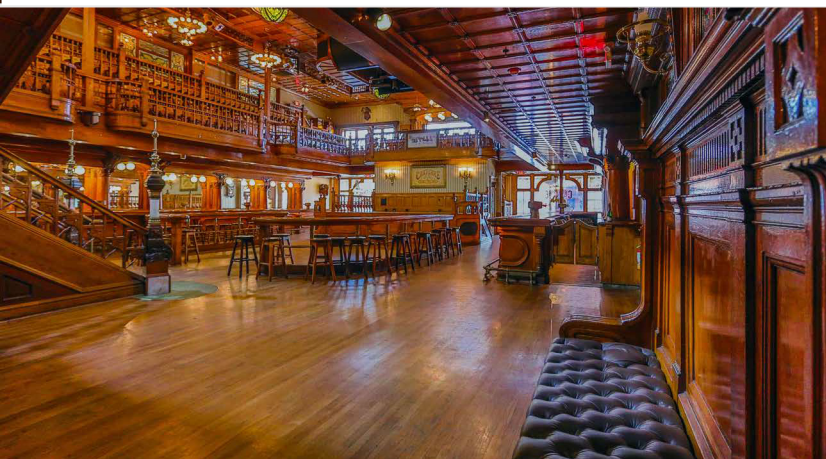
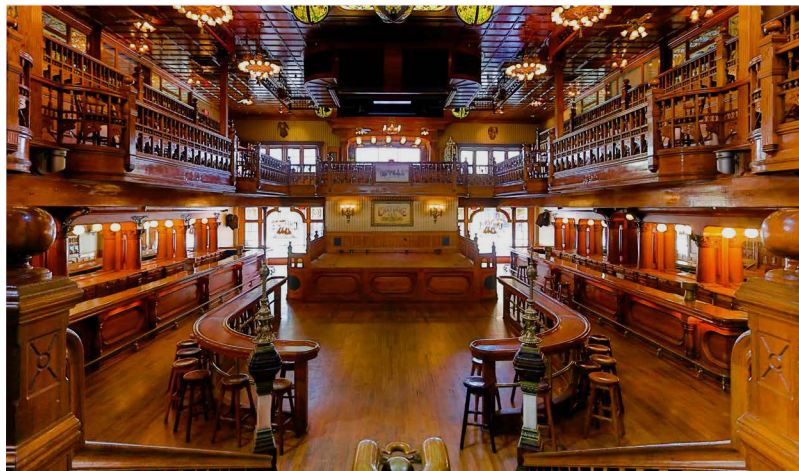
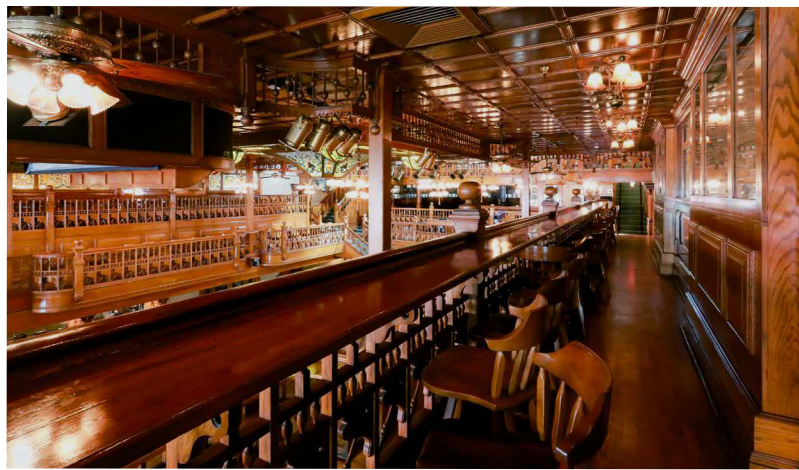
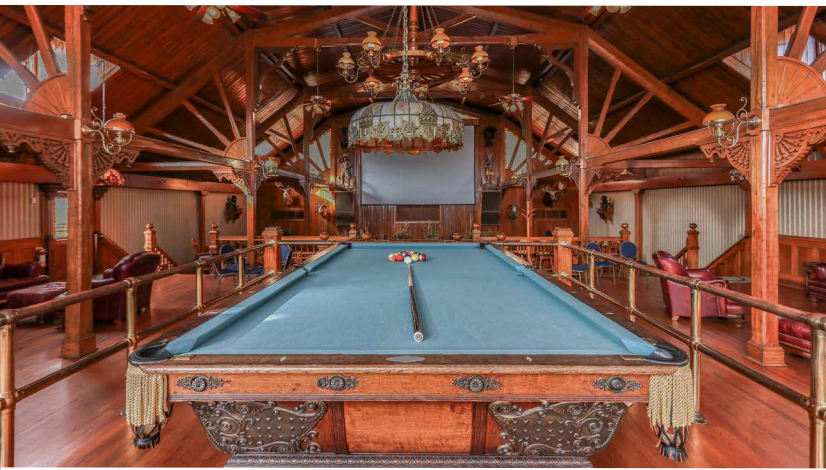
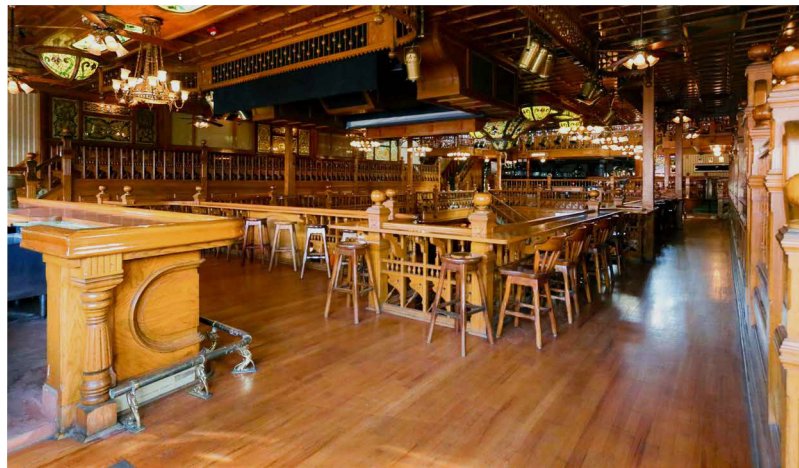
#2

Most Competitive
Business Location Among
Large U.S. Cities
KPMG, 2016

Developer ranking in the United States

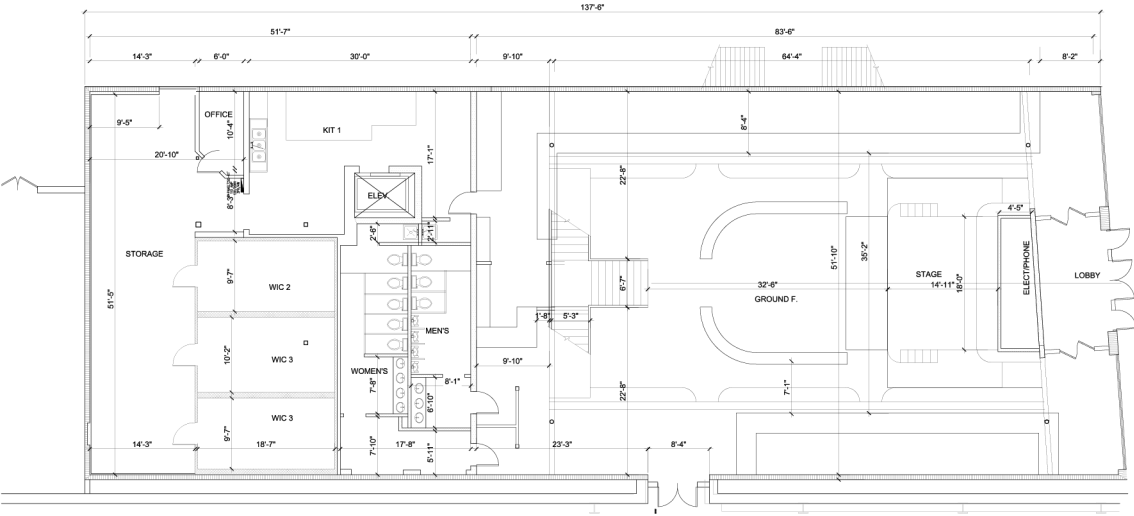
**5,000
COMPANIES**

INTERIOR PHOTOS

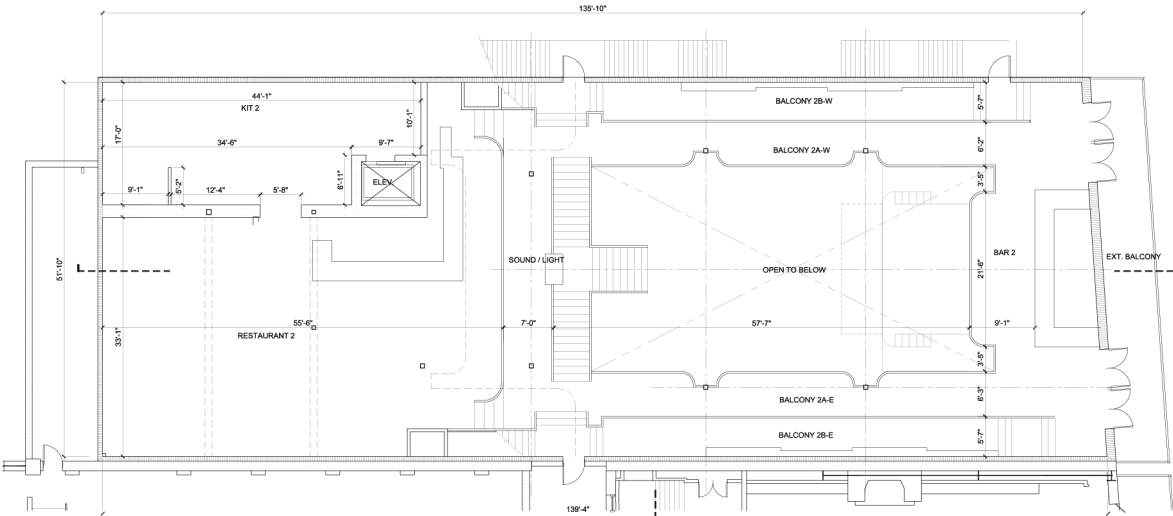


FLOOR PLANS

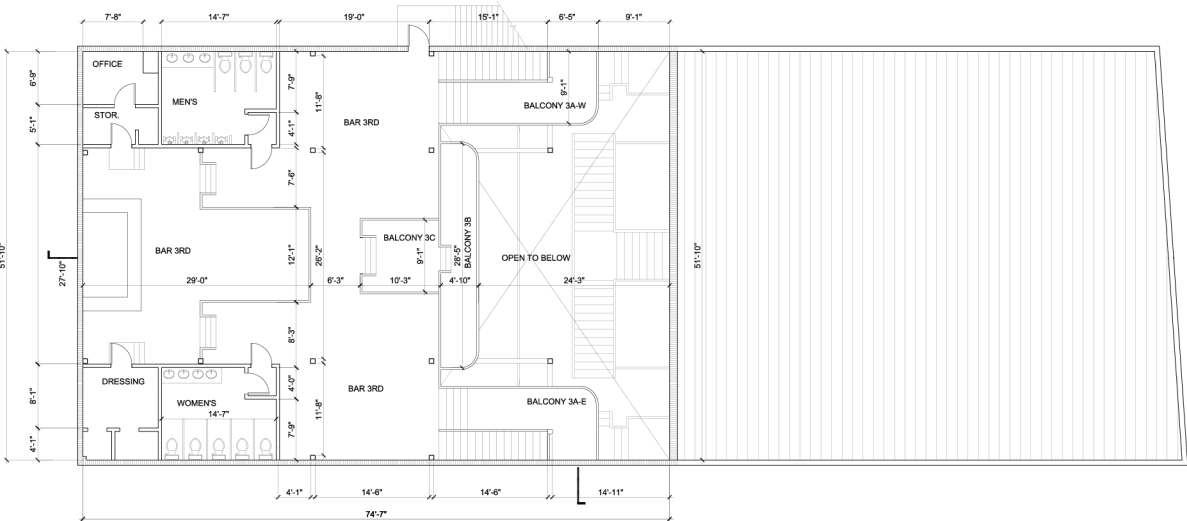
FIRST FLOOR



SECOND FLOOR



THIRD FLOOR



The background of the advertisement is a photograph of a historic building with a balcony on the left and a modern glass skyscraper in the background. The balcony has ornate metal railings and decorative brackets. The skyscraper is tall and blue, reflecting the sky. The overall scene is set against a clear blue sky.

Lincoln

For additional information,
please contact:

SHAYNA HANSEN

shansen@lpc.com

407.872.3516

317.400.5636

LINCOLN PROPERTY COMPANY

333 S. Garland Avenue

Suite 1401

Orlando, FL 32801

LPCsoutheast.com

WE MAKE THINGS HAPPEN.