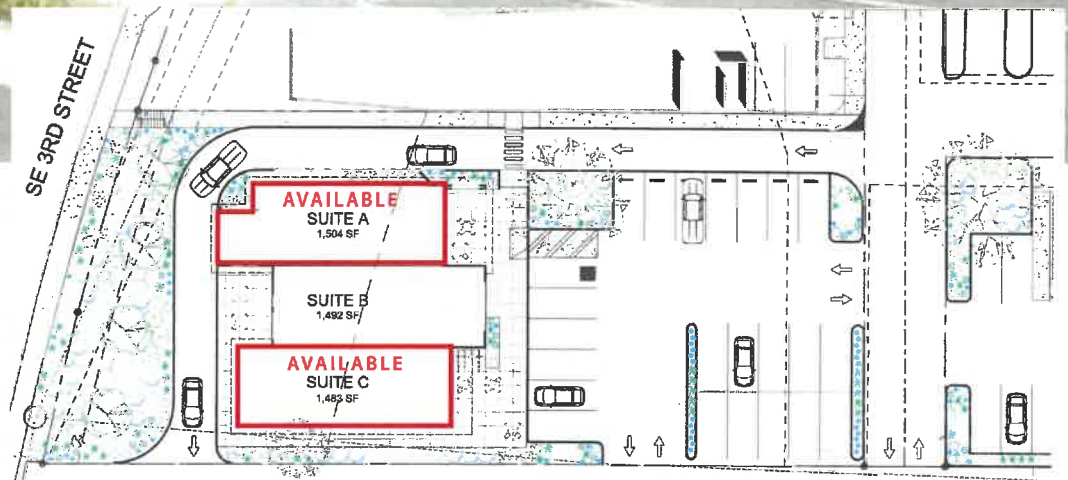


LEASE SPACE AVAILABLE

1025 SE Cleveland Square Loop, Bend, Oregon



**AVAILABLE
MID TO END
OF 2025**

Three Retail Spaces with One Drive-Thru.

Located just north of Reed Market with frontage on 3rd Street.

Two Suites left, one drive thru! Suite A and Suite C are available. Suite B has a lease in place with Avis Budget Rental Cars.

Contact Broker for more information



**COLDWELL BANKER
COMMERCIAL**

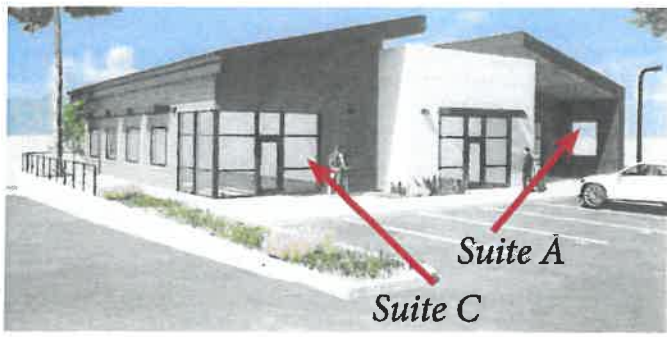
486 Southwest Bluff Drive, Bend, OR 97702 | (541) 382-4123

Call Paula Van Vleck, Broker

541-382-4123 | 541-280-7774

paulavanvleck@cbbain.com

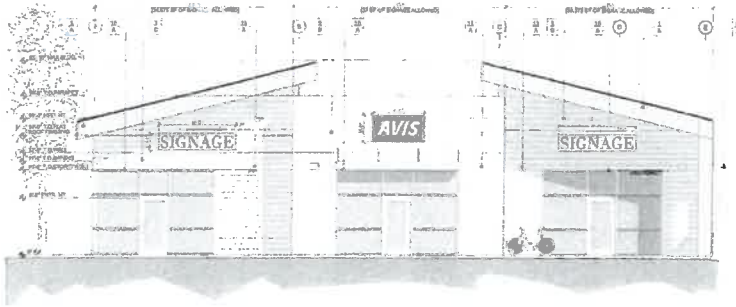
Licensed in the State of Oregon



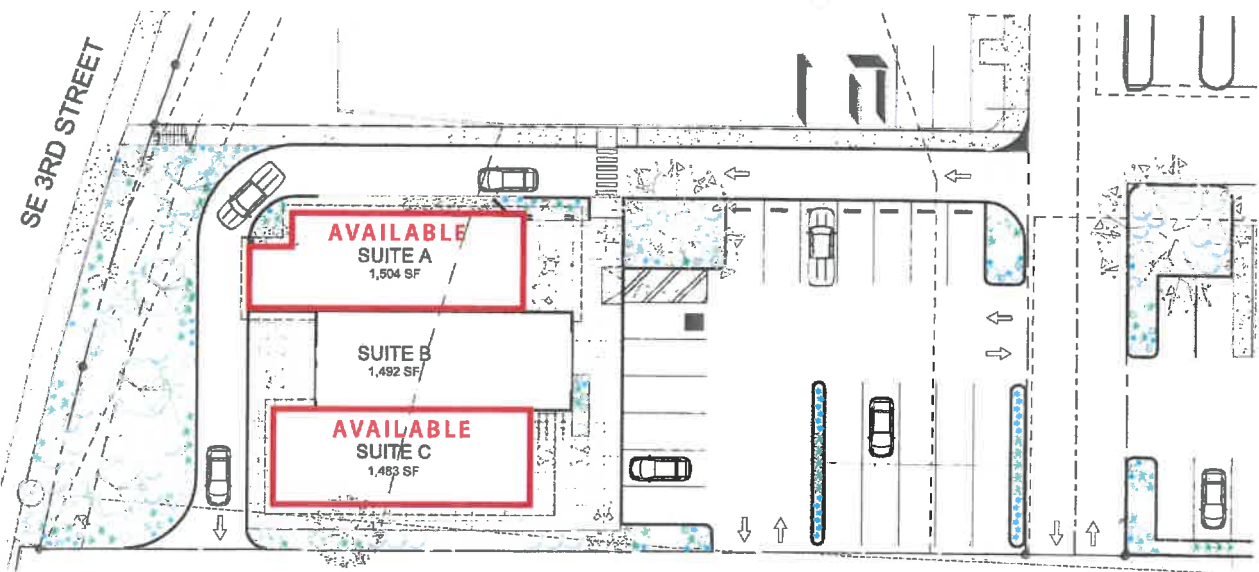
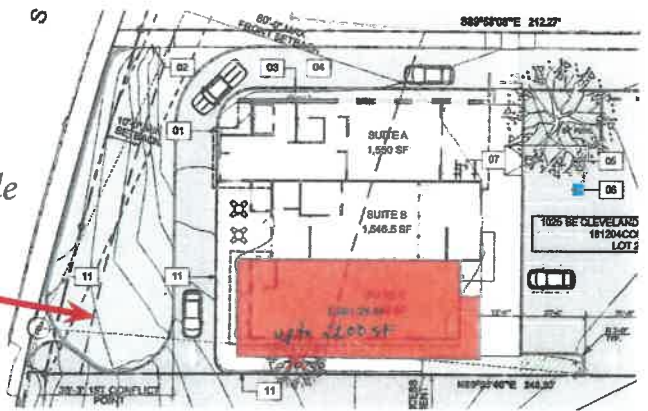
Parking Lot side



3rd Street side



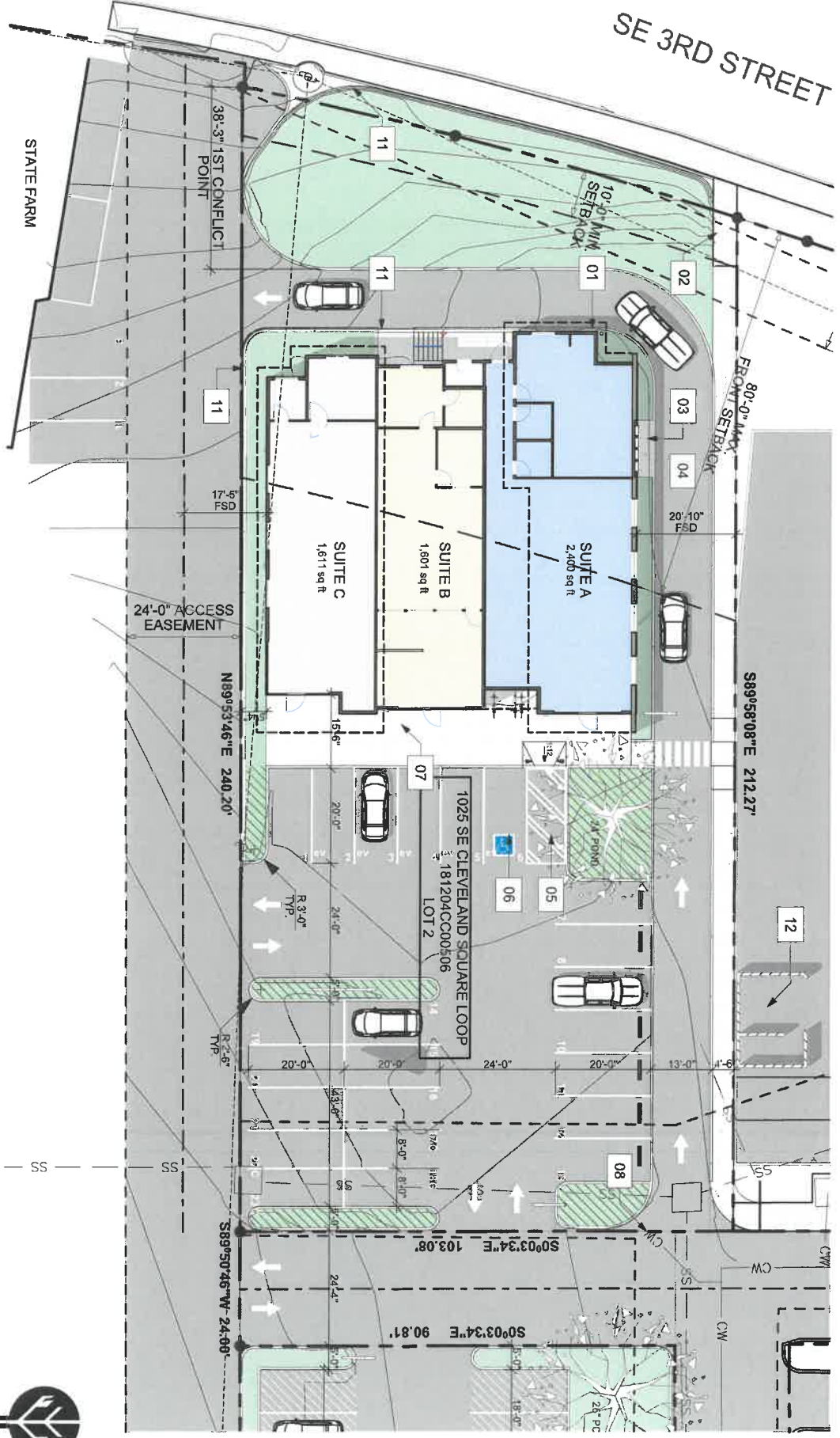
Drawing shows possible expansion available for Suite C



Coldwell Banker - Commercial

"Broker is licensed in the State of Oregon. The information provided herein has been furnished by sources we deem to be reliable and for which we assume no liability. This is an exclusive listing. The information contained herein is provided in confidence with the understanding that all negotiations pertaining to this property will be handled through Coldwell Banker - Commercial. All measurements are approximate"

1 SITE PLAN



CLEVELAND SQUARE LOOP

BEND, OREGON



CRABTREE
 ARCHITECTURE + DESIGN
 616 NW ARIZONA
 BEND, OR 97701
 541.480.9909