



ARBOR HOUSE

25 E. Algonquin Road
Arlington Heights, IL

1,500-10,000 SF OF RETAIL SPACE AVAILABLE

leased, owned + managed by
BA BRADFORD
ALLEN

MICHAEL FLINCHBAUGH | (312) 741-8121 | mflinchbaugh@bradfordallen.com

KYLE SKARR | (312) 224-8794 | kskarr@bradfordallen.com

ARBOR HOUSE

THE GATEWAY TO ARLINGTON HEIGHTS

- 25,000 SF of **streetside retail**
- Eight-story, 301-unit luxury apartment building (500+ residents) that will open in April 2026 with preleasing underway
- 85 surface parking spaces
- First building of a **40-acre master plan community** including medical office, retail, multifamily, and more that will reshape Arlington Heights.
- Located at the southeast corner of Arlington Heights and Algonquin roads, situated just north of the I-90 offramp.
- **Arbor House is shadow-anchored by Mitsuwa Marketplace**



SITE OVERVIEW



RETAIL C
5,535 SF

Mitsuwa®
MARKETPLACE

RETAIL A
10,208 SF

RETAIL B
9,230 SF



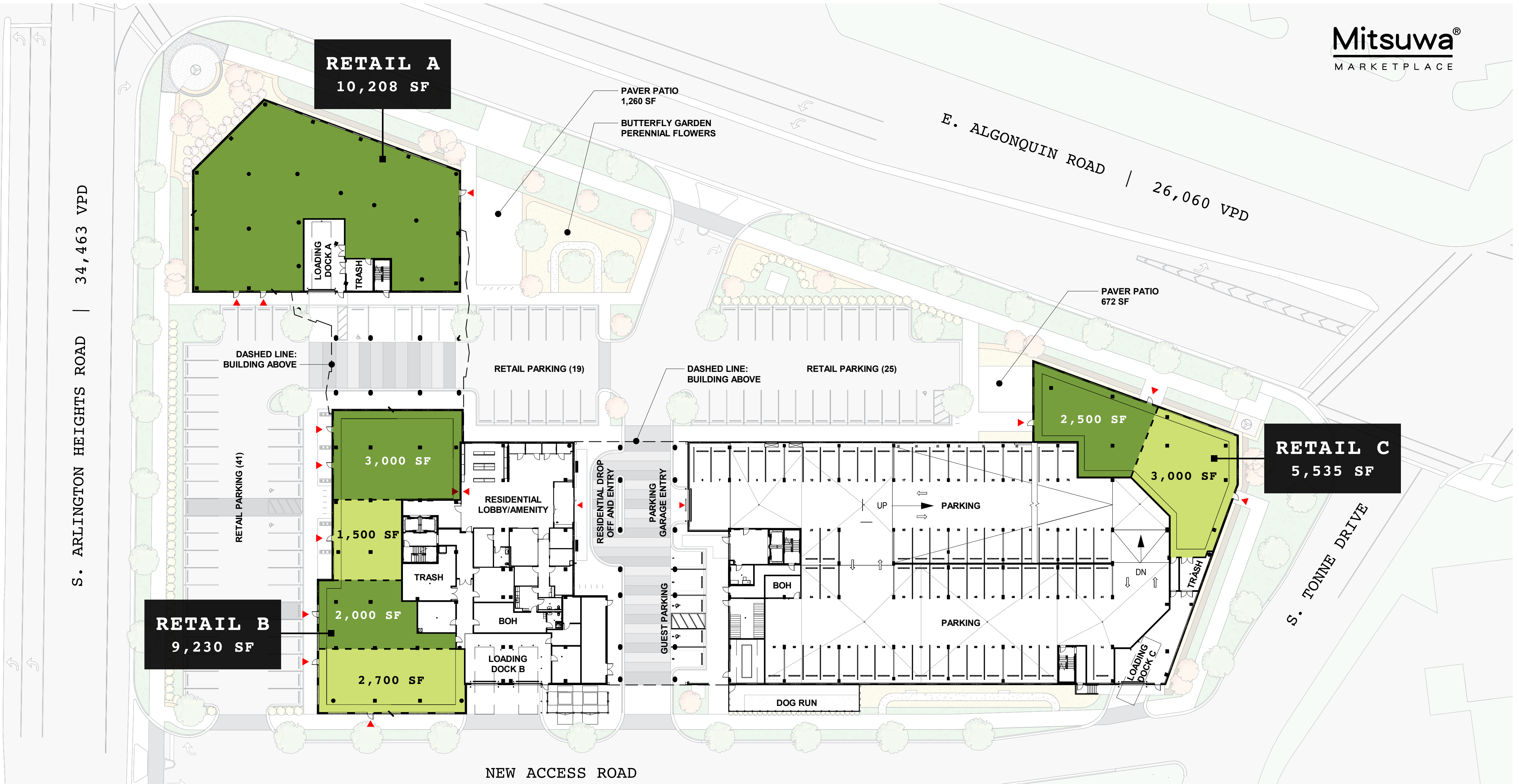
ALG 261,060 VPD ROAD

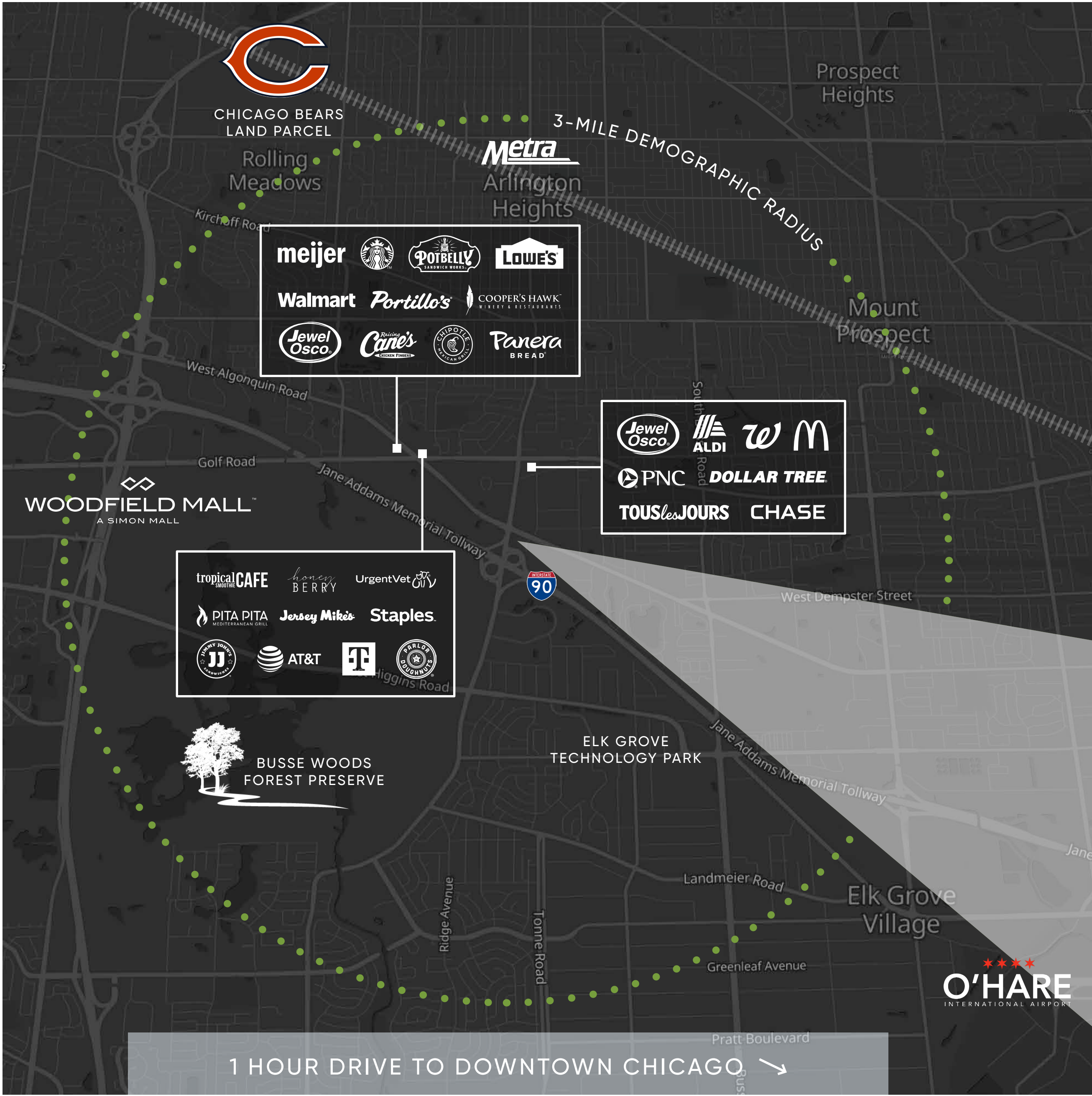
ARLINGTON HEIGHTS ROAD
34,463 VPD

SITE PLAN

Demising plans are conceptual and can be tailored to tenant's desired spec.

Mitsuwa[®]
MARKETPLACE

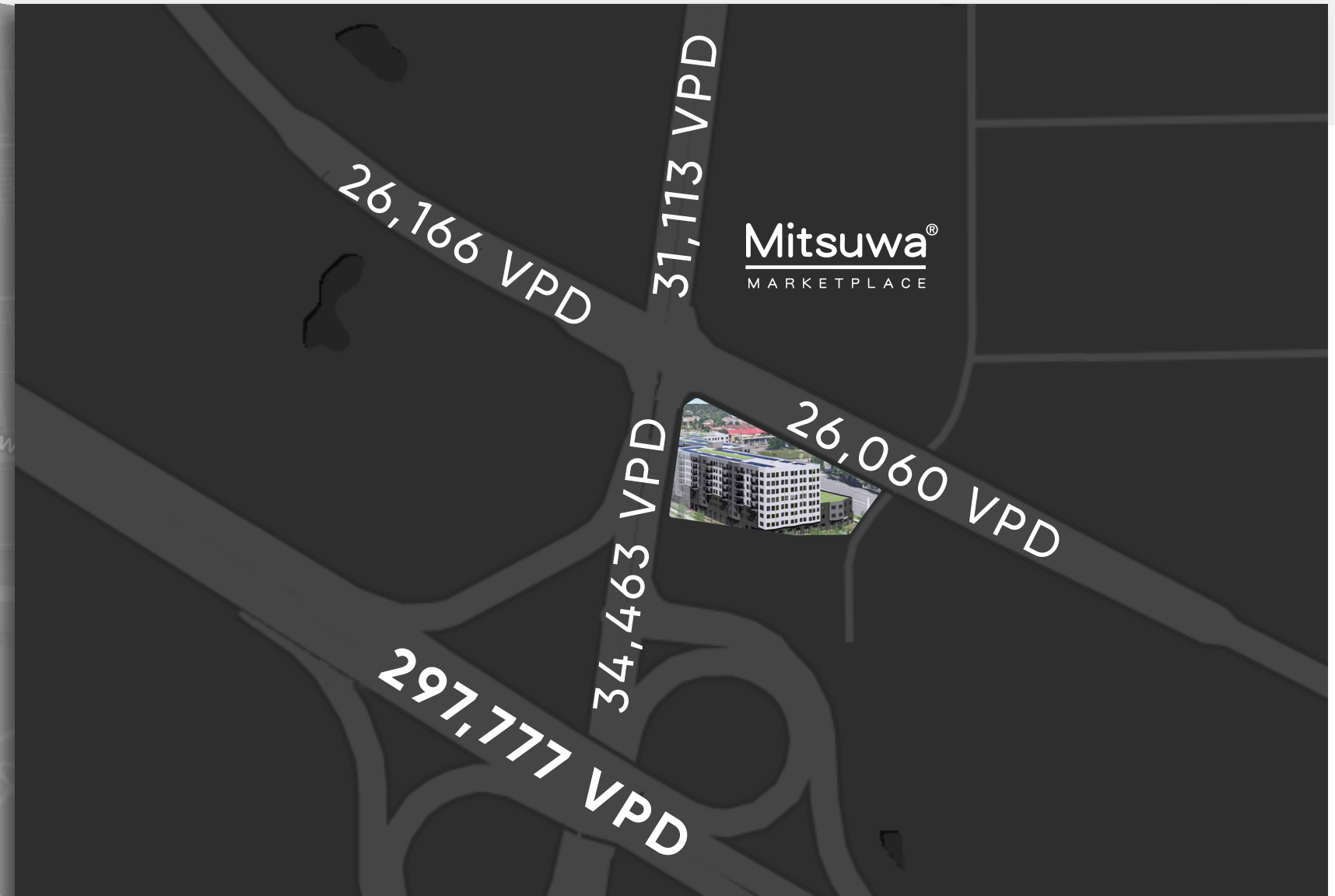




AREA DEMOGRAPHICS

- 100,000 residents within 3-mile radius
- Household income of \$128,000+. Nearly 50% of residents make over \$100,000.
- Family-oriented market: nearly 80% of households include married couples.
- Visibility: 85,000+ vehicles daily
- 5,000+ new residents upon completion of all development phases.

NEIGHBORING TENANTS



ARLINGTON GATEWAY

The 40-acre master plan community



ARBOR
HOUSE

ArlingtonMed
Medical Office
5-story, 150,00-SF redevelopment



ARBOR HOUSE

25 E. Algonquin Road
Arlington Heights, IL 60005

MICHAEL FLINCHBAUGH

(312) 741-8121

mflinchbaugh@bradfordallen.com

KYLE SKARR

(312) 224-8794

kskarr@bradfordallen.com

leased, owned + managed by

BA BRADFORD
ALLEN

