

FOR SALE

0.9 ACRES

3201 Executive Park Circle | Mobile, AL

REDUCED PRICE

0.9±
ACRES

EXECUTIVE PARK CIRCLE

Brandon Broadus



251.288.7786 | bbroadus@cre-mobile.com

Pete J. A. Riehm



SIR

251.442.4349 | priehm@cre-mobile.com



**CRE
MOBILE**
CRE-MOBILE.COM

FOR SALE

3201 Executive Park Circle | Mobile



SIZE

0.9± ACRES (39,204± SF)



ZONING

Zoned B-2: Neighborhood Business



UTILITIES

All Utilities in Place



BEST USE

Perfect Office Development Site



REDUCED PRICE

\$34,500 ~~\$56,900~~

Owner financing available

LOCATION ADVANTAGES



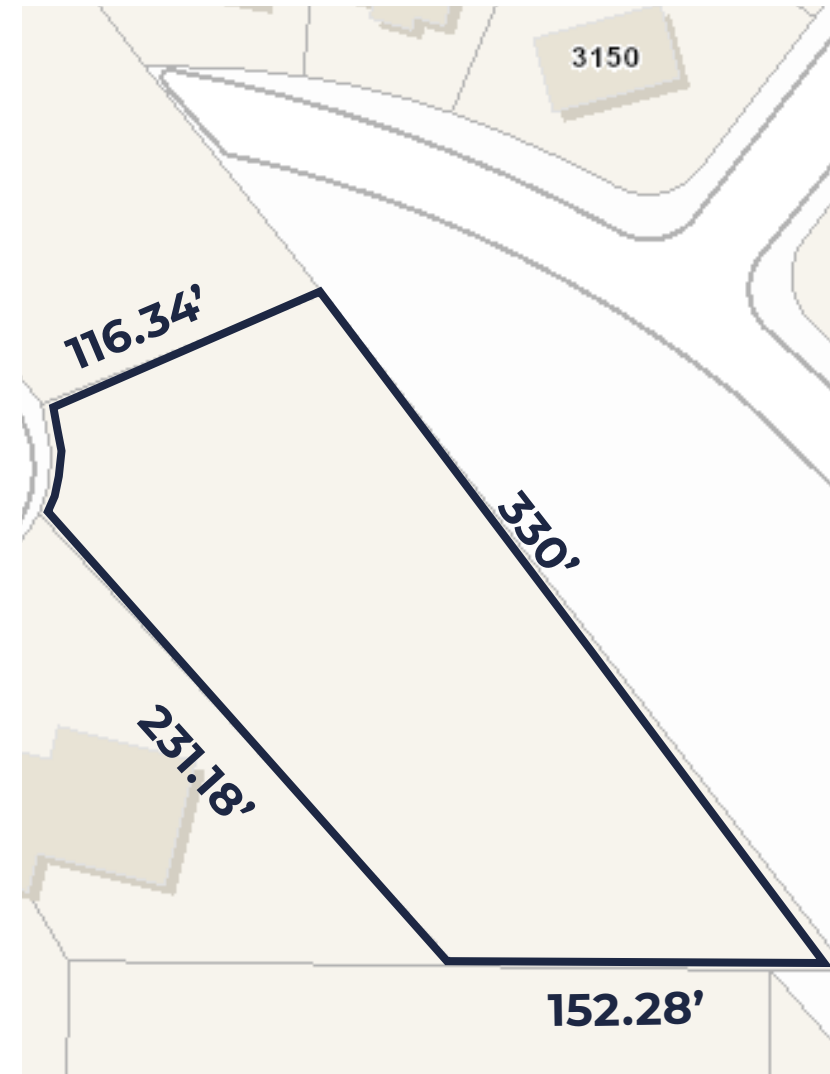
Central Location

Conveniently in between Cottage Hill Rd. & Pleasant Valley Rd. with quick access to Airport Blvd., I-65, I-10 and HWY 90.



Vibrant Retail Corridor

Prime development site proximate to a main retail hub of Mobile with other offices, shopping, hotels, car dealerships and more!



About CRE Mobile

CRE Mobile is a team of seasoned professionals with over 175 years of experience in all facets of real estate with a unique presence as a full-service commercial real estate firm in southwest Alabama. We align our goals with yours because we recognize the future of your asset depends upon our performance to deliver results to you. Success comes from being on the same page—from the big picture down to the small details. We are here to help you — find your space —