

BAYSIDE REALTY PARTNERS PRESENTS

2201 Webster Street San Francisco, California

Charming Medical/Dental Space in Heart of Pacific Heights



TRASK LEONARD
President and CEO
650.533.2591
tleonard@baysiderp.com
DRE#01152101

BAYSIDE
REALTY PARTNERS
MEDICAL/DENTAL PROPERTY SPECIALISTS

2201 Webster Street San Francisco, California

LOCATION

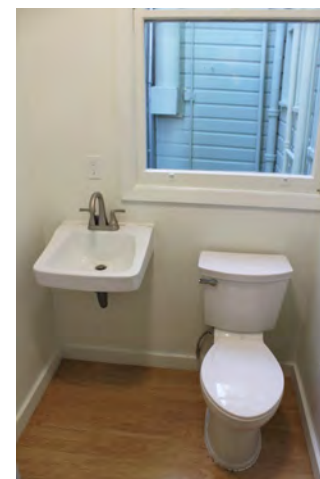
- Located on northwest corner of Clay and Webster Streets on campus at [CPMC Pacific Heights Outpatient Center](#)
- Steps from Fillmore Street
- Immediately across the street from CPMC parking garage and 2100 Webster garage
- Convenient location for patients living in Pacific Heights, Marina, Cow Hollow, Hayes Valley



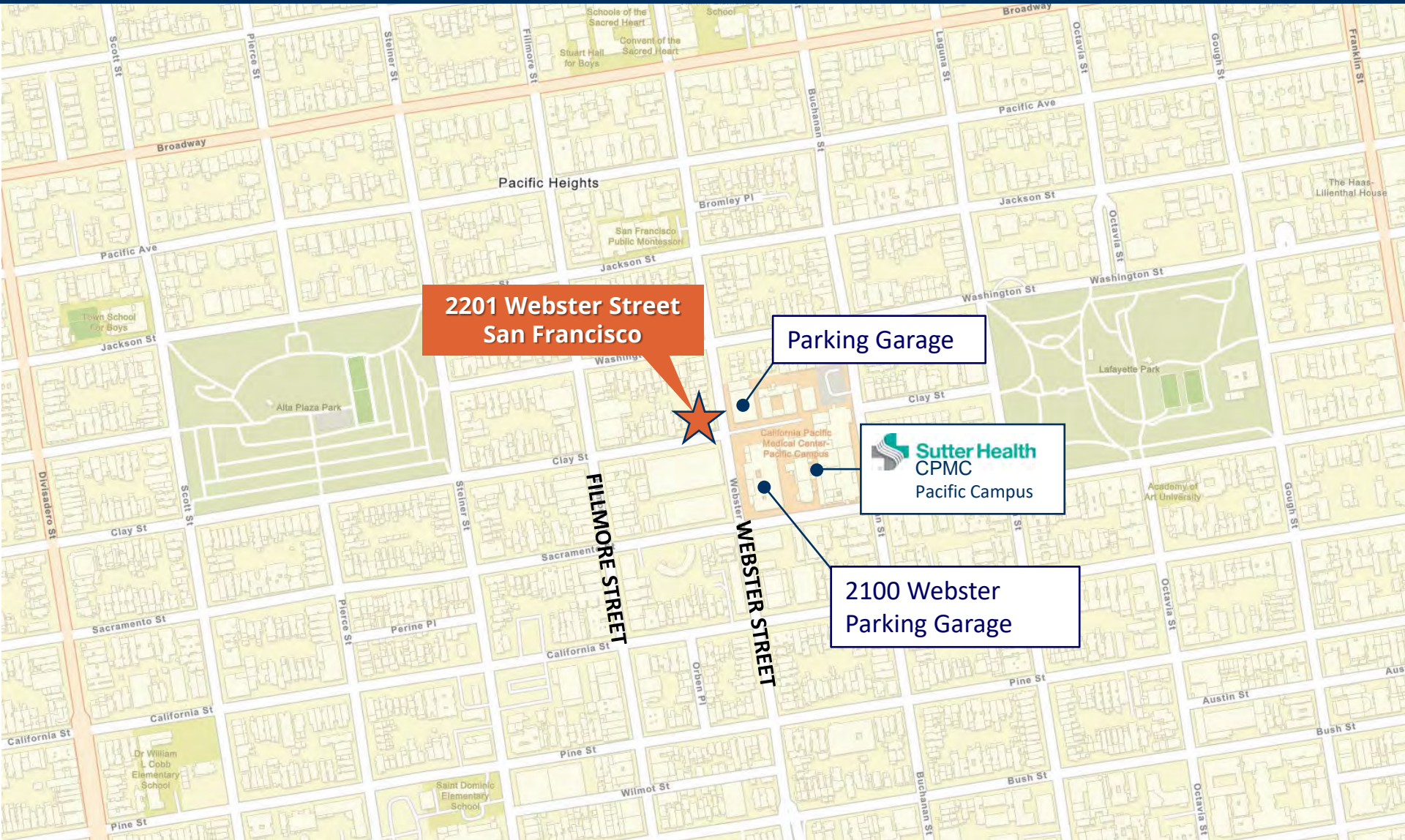
SPACE

- Approximately 1,950 sf
- Very high ceilings
- Excellent natural light and views
- Move-in-ready
- 3 large exam rooms, 3 offices, 2 restrooms
- Divisible to approximately 400 sf
- Available immediately

2201 Webster Street San Francisco, California

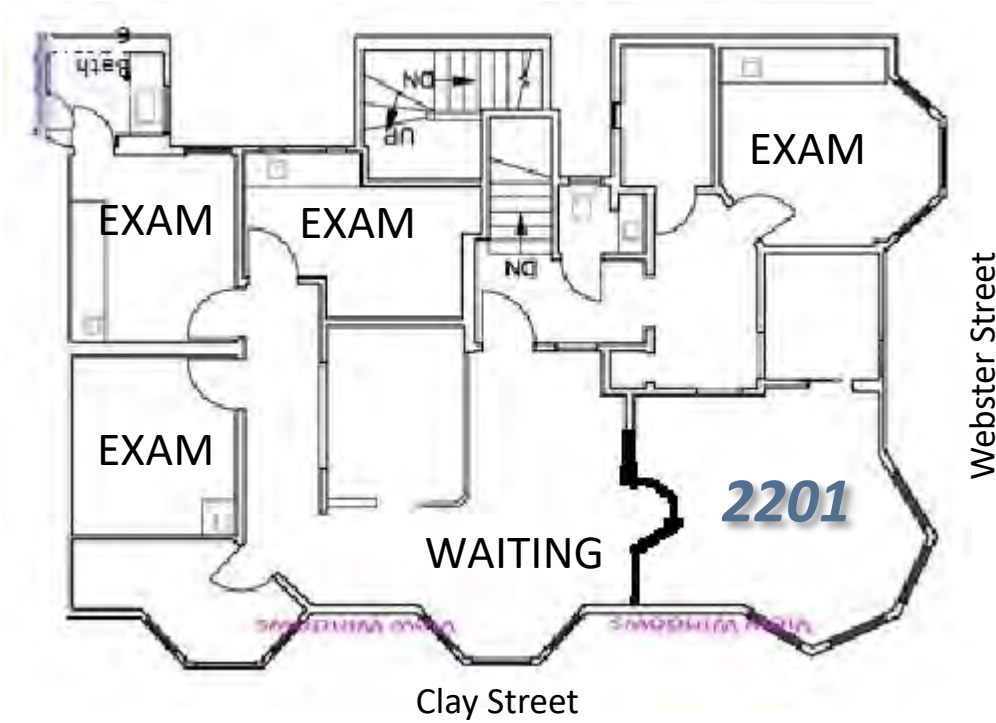


2201 Webster Street San Francisco, California



2201 Webster Street

San Francisco, California



Suite 2201

1,950 RSF

4 large exam rooms, 3 offices, 2 restrooms. Divisible to approximately 400 sf

Meet Your Expert Team



TRASK LEONARD

President and CEO

650.533.2591

tleonard@baysiderp.com

DRE#01152101

DOMINANT. EXPERT. INFLUENTIAL.

BAYSIDE REALTY PARTNERS

The preeminent provider of management, leasing, construction management and accounting services for healthcare properties.



MARKET LEADER

- Leasing & Property Management
- Investment Sales
- Tenant Representation
- Construction Management
- Property Repositioning



INFLUENTIAL NETWORK

- Institutional Investors
- Healthcare Systems and Healthcare Districts
- Physicians & Districts
- Private Investors



DOMINANT FOOTPRINT

- 2 million SF leased & managed
 - 50+ MOB portfolio
 - 10,000-240,000 SF
 - 500,000 SF portfolio
- San Francisco's largest MOBs
- 950+ leases executed
- 500+ medical and dental tenants

DOMINANT. EXPERT. INFLUENTIAL.