

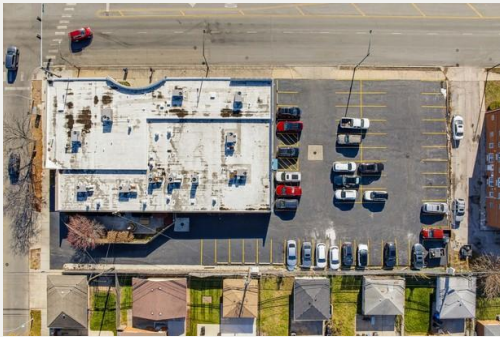
HERITAGE MEDICAL/RETAIL OFFICE

AMENITIES:

- 4,624 - 10,715 SqFt.
- Parking: 4.9 /1,000 SqFt.
- Building Signage Available
- Near the CTA 87th & California Bus Stop
- Near Wrightwood & Ashburn Metra Station

FOR LEASE SUBJECT TO OFFER

PRIME SOUTH CHICAGO LOCATION EVERGREEN PARK, 2800 W 87TH ST



2800 W 87th St Chicago, IL 60652

Features Include: The property offers easy access to major highways, I-94 and I-57. Located on the busy 87th Street corridor, the building is close to established retail centers, including Westport Commons and the 87th & Dan Ryan Plaza, as well as nearby restaurants and shopping. It is also near several major healthcare facilities.

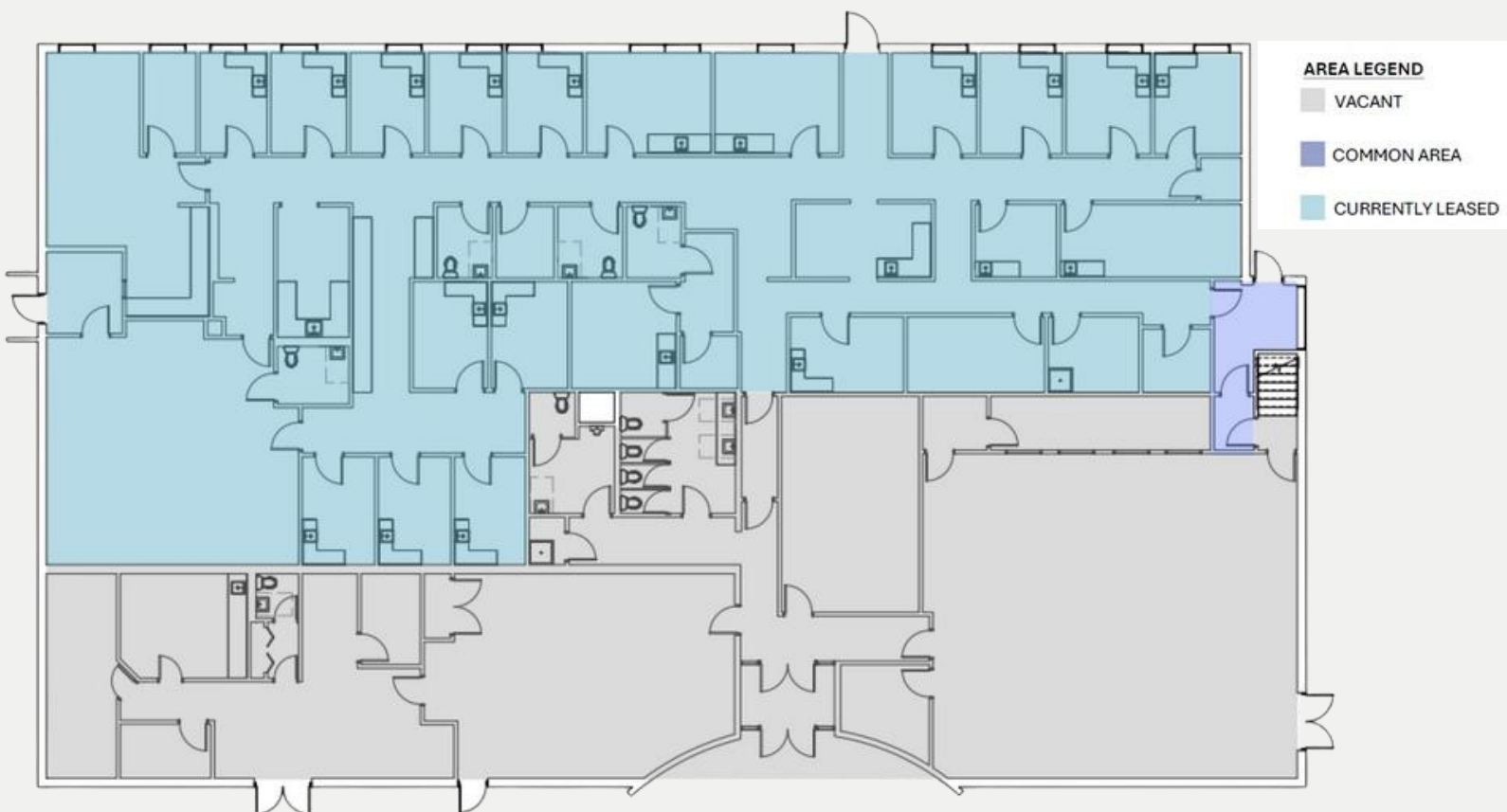
Including:

- OSF Healthcare Little Company of Mary Medical Center
- Advocate Christ Medical Center
- Holy Cross Hospital

To Schedule Tour Contact: Matt Blachowicz (630) 441-7773 || matt@blackswanreg.com

MEDICAL/RETAIL OFFICE FOR LEASE

FOR LEASE SUBJECT TO OFFER



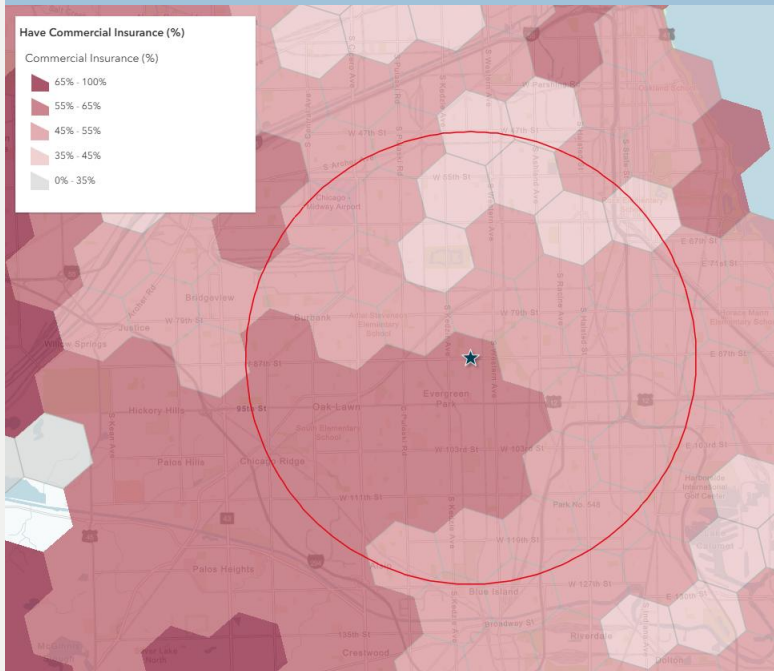
2800 W 87th St Chicago, IL 60652

To Schedule Tour Contact: Matt Blachowicz (630) 441-7773 || matt@blackswanreg.com

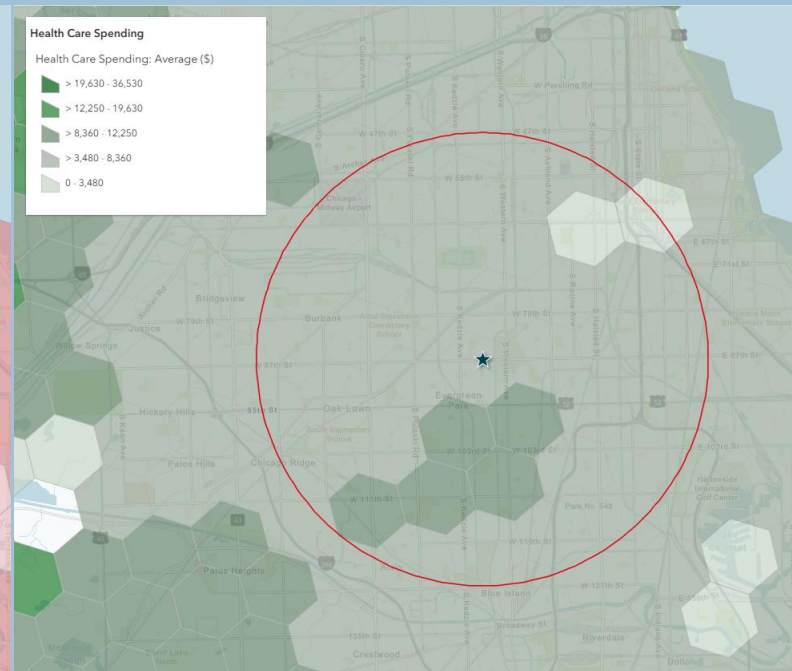
MEDICAL/RETAIL OFFICE FOR LEASE

FOR LEASE SUBJECT TO OFFER

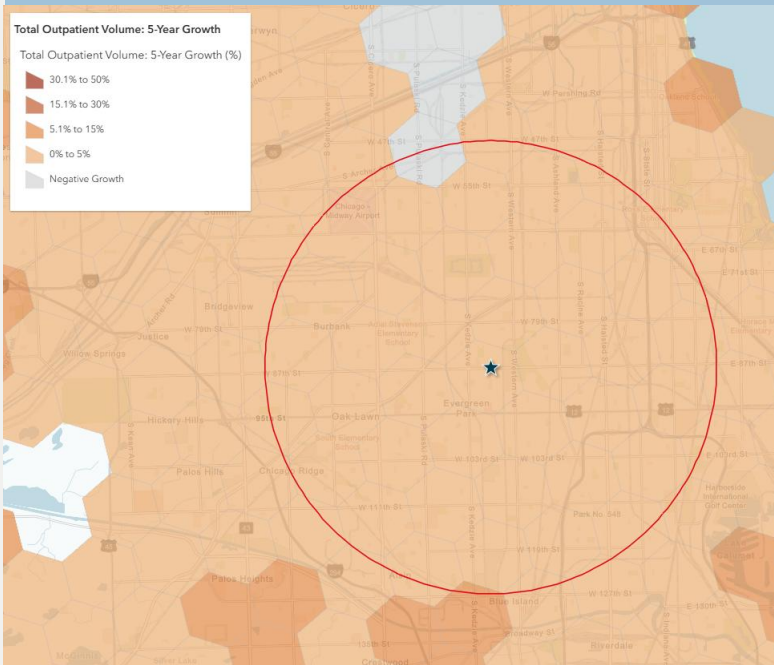
COMMERCIAL INSURANCE DENSITY



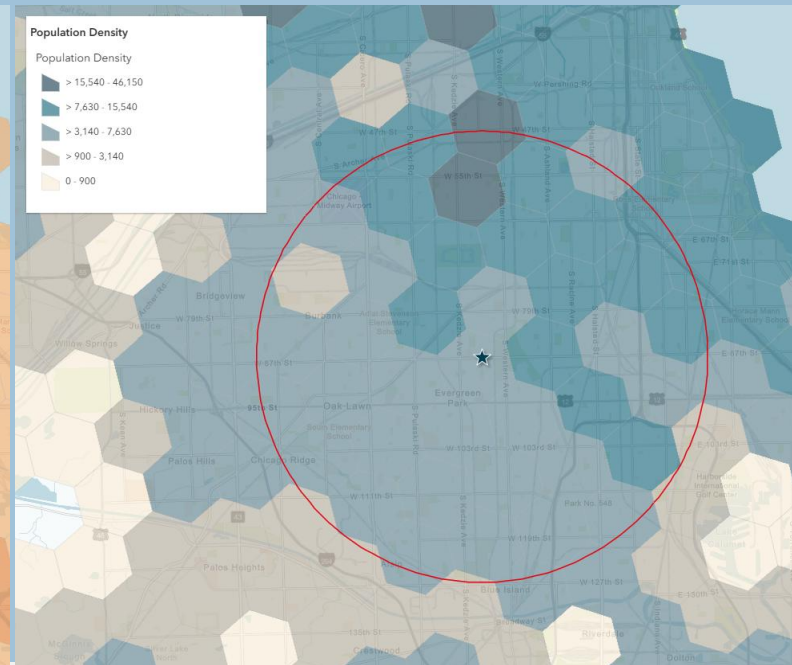
AVERAGE HEALTHCARE SPEND



OUTPATIENT GROWTH



POPULATION DENSITY



2800 W 87th St Chicago, IL 60652

To Schedule Tour Contact: Matt Blachowicz (630) 441-7773 || matt@blackswanreg.com