



8700 W Trail Lake Dr

Memphis, Tennessee 38125

Property Features

- Multiple Class A Office Suites Available Ranging from 1,617 - 5,516 SF
- 1,000 kW Generator in Building
- Located Near the FedEx World Headquarters
- Quick Access to Various Restaurants, Grocery Stores, Gas Stations, and More
- Direct Proximity to TPC Southwind Private Golf Club and Windyke Country Club



For more information:

Brian Califf, CCIM

901 526 3100 • bcaliff@saigcompany.com

NO WARRANTY OR REPRESENTATION, EXPRESS OR IMPLIED, IS MADE AS TO THE ACCURACY OF THE INFORMATION CONTAINED HEREIN, AND THE SAME IS SUBMITTED SUBJECT TO ERRORS, OMISSIONS, CHANGE OF PRICE, RENTAL OR OTHER CONDITIONS, PRIOR SALE, LEASE OR FINANCING, OR WITHDRAWAL WITHOUT NOTICE, AND OF ANY SPECIAL LISTING CONDITIONS IMPOSED BY OUR PRINCIPALS NO WARRANTIES OR REPRESENTATIONS ARE MADE AS TO THE CONDITION OF THE PROPERTY OR ANY HAZARDS CONTAINED THEREIN ARE ANY TO BE IMPLIED.

NAI Saig Company

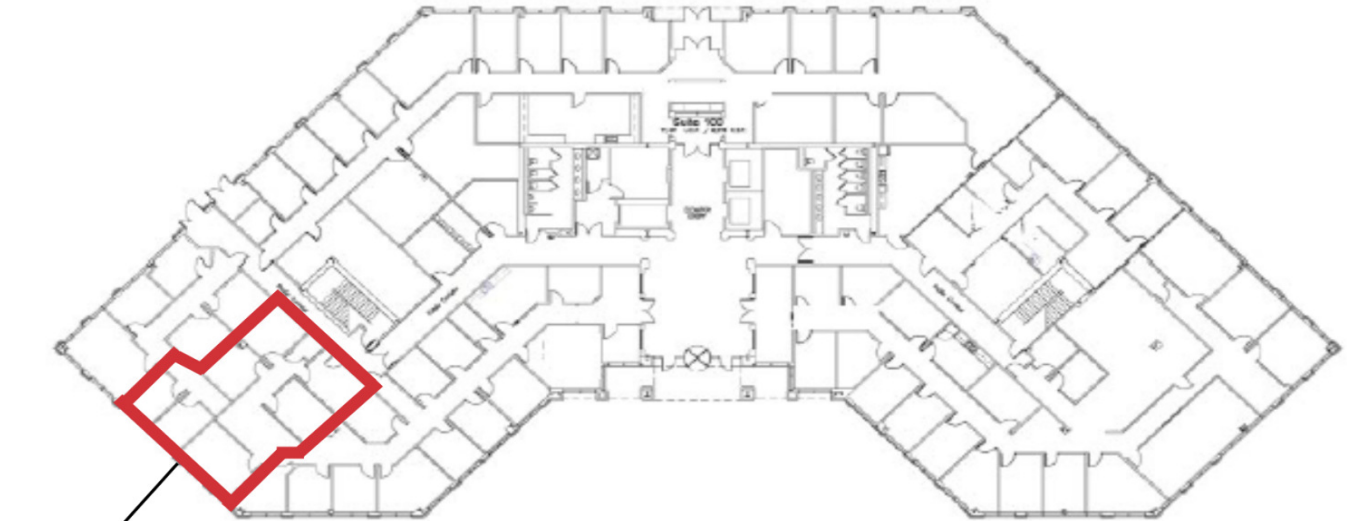
6263 Poplar Avenue Suite 150, Memphis, TN 38119

901 526 3100

saigcompany.com

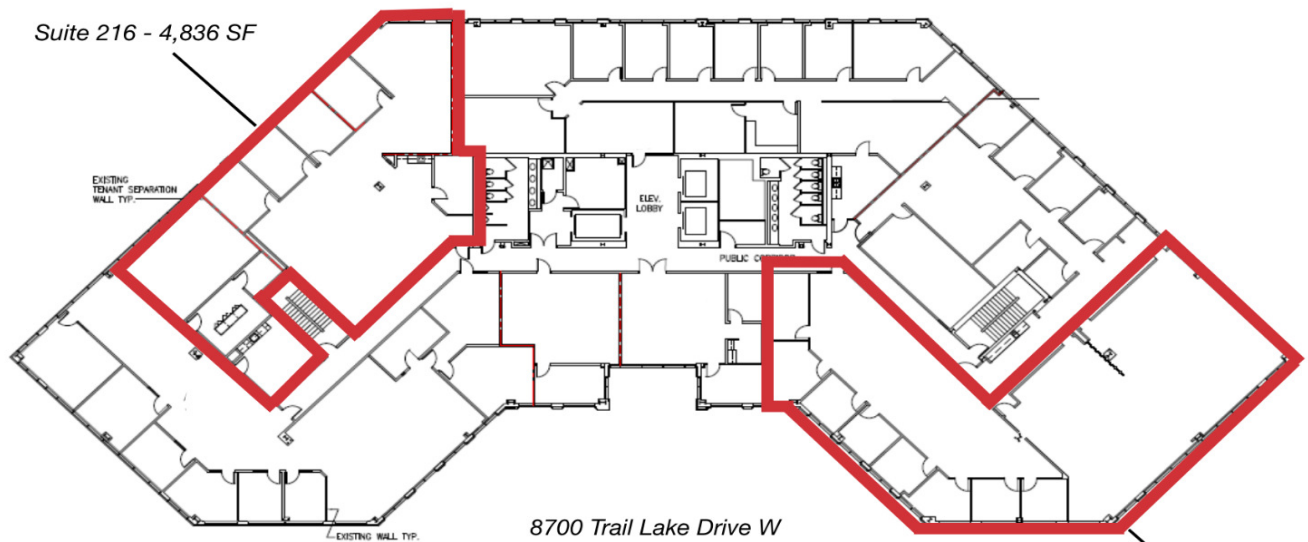
For Lease

Class A Office



Suite 105 - 1,617SF

8700 Trail Lake Drive W
Floor 1



Suite 216 - 4,836 SF

8700 Trail Lake Drive W
Floor 2

Suite 201 - 5,516 SF

Available	SF
Floor 1 - Suite 105	1,617 SF
Floor 2 - Suite 201	5,516 SF
Floor 2 - Suite 216	4,836 SF

For Lease

Class A Office

