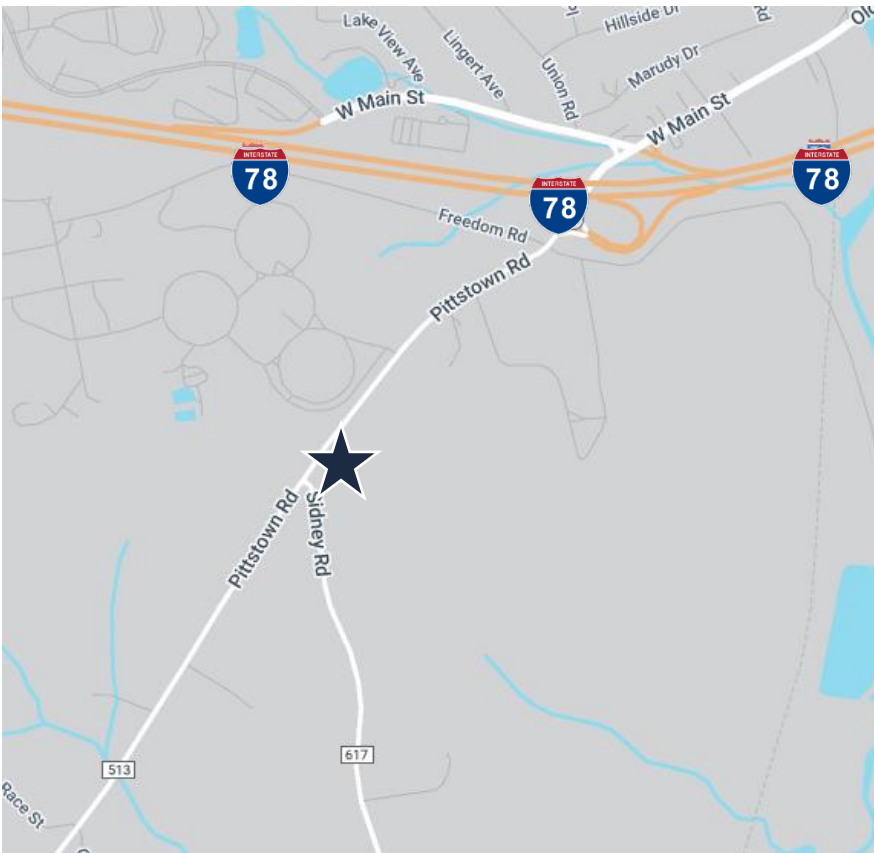


44 Pittstown Road aka Route 513, Clinton, NJ

±3,120 SF Medical / Professional Office with Residential Apartment



Specifications

±1,560 SF (8 Rooms)
OFFICE SPACE

±1,560 SF
APARTMENT SPACE

±0.7 AC (Block 22, Lot 20.01)
LOT SIZE

RM
ZONING

Built in 1959
10 Parking Spaces
Ideal for Chiropractor or Other
Medical Profession
COMMENT

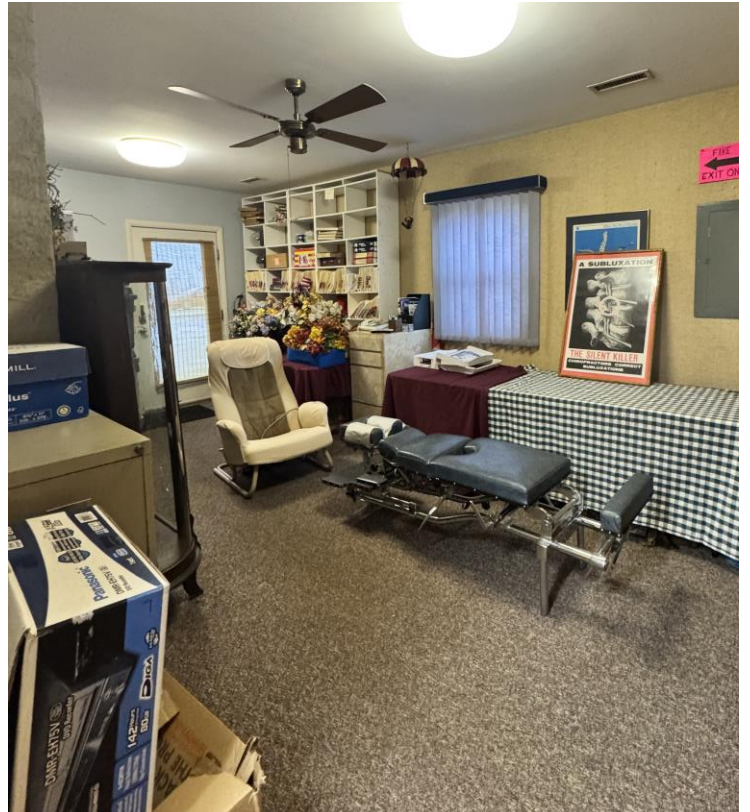
\$6,662.14 (2025)
TAXES (2023)

\$599,000
REDUCED SALE PRICE

0.4 Miles to I-78
0.7 Miles to Route 22
2.4 Miles to Route 31
ACCESSIBILITY

For additional property information or to arrange
an inspection, please contact the exclusive broker:

Alex Dombrowski
Associate
973.379.6644 x 229
ADombrowski@blauberg.com



For additional property information or to arrange an inspection, please contact the exclusive broker:

Alex Dombrowski
Associate
973.379.6644 x 229
ADombrowski@blauberg.com



For additional property information or to arrange an inspection, please contact the exclusive broker:

Alex Dombrowski
Associate
973.379.6644 x 229
ADombrowski@blauberg.com



5 MILES

- Total Population: 30,495
- Households: 11,063
- Median Household Income: \$153,795
- Average Household Size: 2.5
- Transportation to Work: 15,583
- Labor Force: 25,663

10 MILES

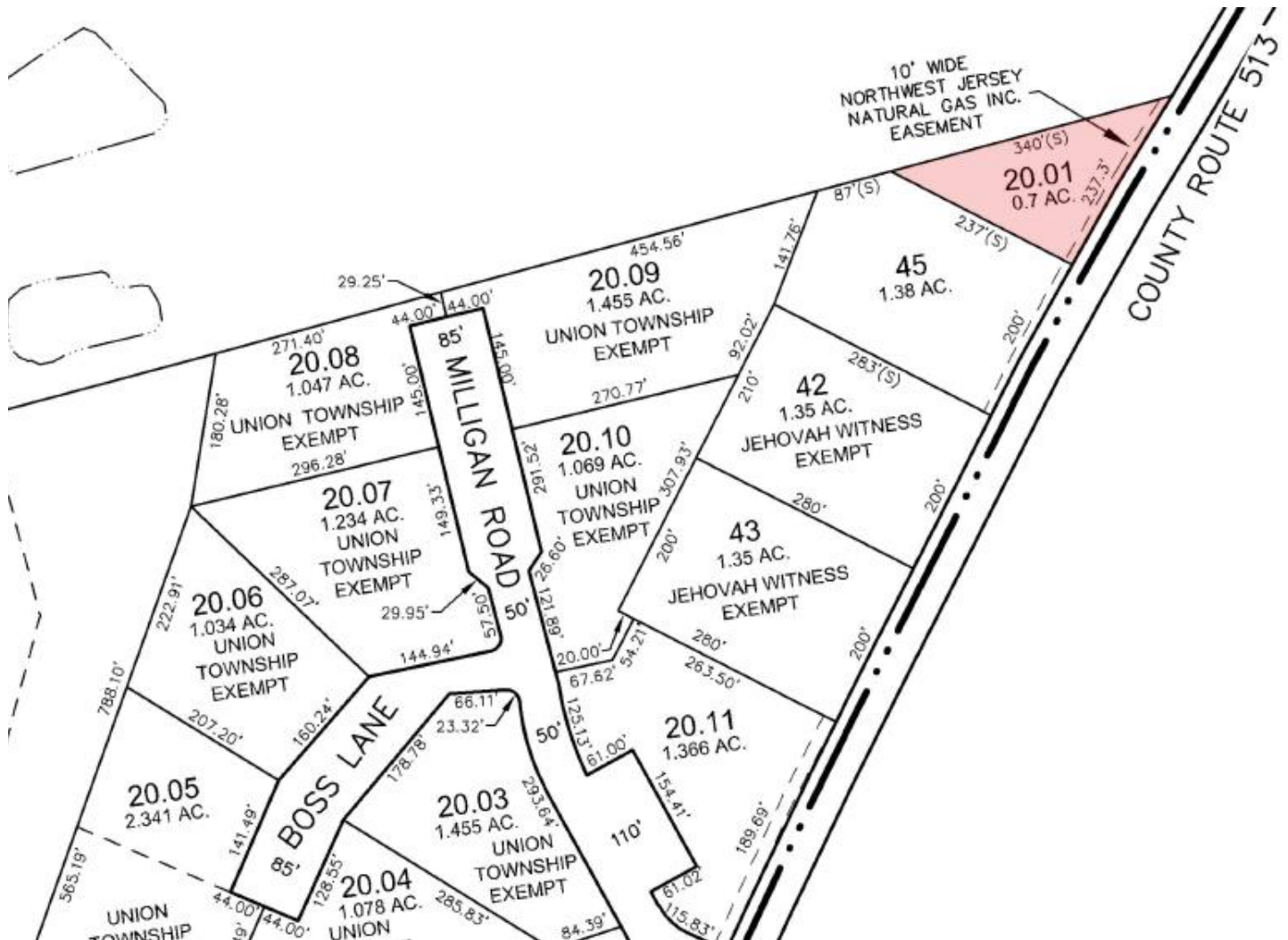
- Total Population: 109,251
- Households: 42,049
- Median Household Income: \$143,645
- Average Household Size: 2.5
- Transportation to Work: 58,245
- Labor Force: 91,128

15 MILES

- Total Population: 251,263
- Households: 96,757
- Median Household Income: \$141,329
- Average Household Size: 2.6
- Transportation to Work: 135,649
- Labor Force: 208,748

For additional property information or to arrange an inspection, please contact the exclusive broker:

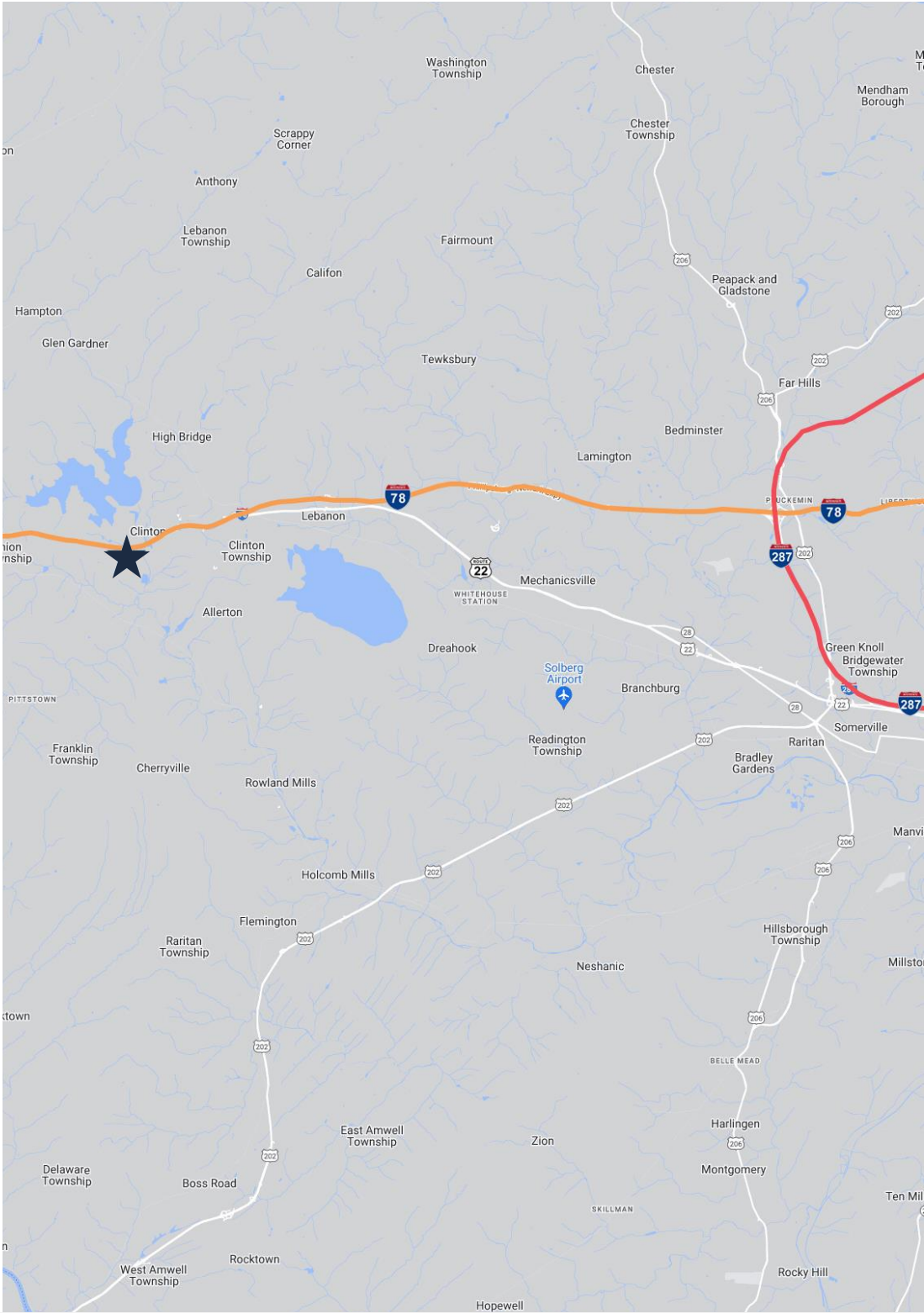
Alex Dombrowski
Associate
973.379.6644 x 229
ADombrowski@blauberg.com



For additional property information or to arrange an inspection, please contact the exclusive broker:

Alex Dombrowski
Associate
973.379.6644 x 229
ADombrowski@blauberg.com

FOR SALE | 44 PITTSTOWN ROAD | CLINTON, NJ



ACCESSIBILITY



0.4 MI
I-78



0.7 MI
Route 22



2.4 MI
Route 31

For additional property information or to arrange
an inspection, please contact the exclusive broker:

Alex Dombrowski
Associate
973.379.6644 x 229
ADombrowski@blauberg.com

The information contained herein has been obtained from sources considered to be reliable, but no guarantee of its accuracy is made by this company. In addition, no representation is made respecting zoning, condition of title, dimensions, or any matters of a legal or environmental nature. Such matters should be referred to legal counsel for determination. Terms and conditions are subject to change without prior notice. Subject to errors and omissions.

