

I CERTIFY THAT I AM THE OWNER OF THE PROPERTY DEPICTED HEREON, AND THAT I HEREBY ADOPT THIS PLAN OF SUBDIVISION OF MY OWN FREE WILL AND CONSENT; AND, DEDICATE TO THE PUBLIC THE RIGHTS-OF-WAY AS INDICATED UPON THIS PLAT.

I HEREBY ATTEST TO THE FOLLOWING TO THE BEST OF MY KNOWLEDGE, BELIEF, AND ABILITY; THIS PLAT DEPICTS AN URBAN CLASS SURVEY MADE BY MYSELF USING THE METHOD OF RANDOM TRAVERSE WITH AN ERROR-OF-CLOSURE OF 1:19010 AND AN ANGULAR ERROR OF 00-00'-25". BEARINGS AND DISTANCES HAVE NOT BEEN ADJUSTED FOR CLOSURE. BASIS OF BEARINGS SHOWN IS FROM PREVIOUS PLAT OF SURVEY B CABINET 8, SLIDE 188. LAST DATE OF FIELD SURVEY WAS JUL 11, 2014.

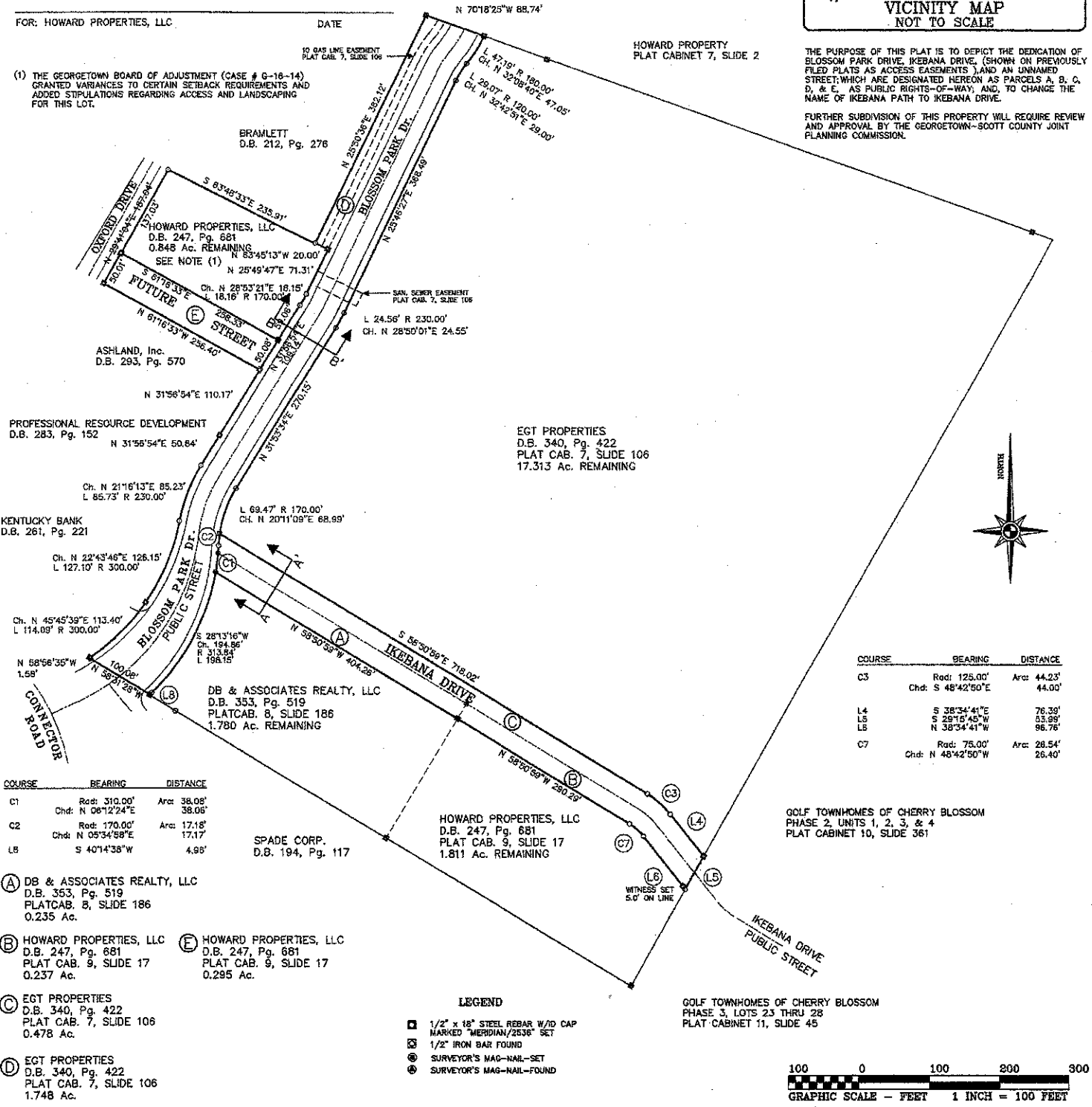
Joel Day
 Wm. JOEL DAY, P.L.S. No. 2536 DATE

FOR: EGT PROPERTIES DATE
 FOR: DB & ASSOCIATES REALTY DATE
 FOR: HOWARD PROPERTIES, LLC DATE

(1) THE GEORGETOWN BOARD OF ADJUSTMENT (CASE # G-18-14) GRANTED VARIANCES TO CERTAIN SETBACK REQUIREMENTS AND ADDED STIPULATIONS REGARDING ACCESS AND LANDSCAPING FOR THIS LOT.

THE PURPOSE OF THIS PLAT IS TO DEPICT THE DEDICATION OF BLOSSOM PARK DRIVE, IKEBANA DRIVE, (SHOWN ON PREVIOUSLY FILED PLATS AS ACCESS EASEMENTS), AND AN UNNAMED STREET, WHICH ARE DESIGNATED HEREON AS PARCELS A, B, C, D, & E, AS PUBLIC RIGHTS-OF-WAY; AND, TO CHANGE THE NAME OF IKEBANA PATH TO IKEBANA DRIVE.

FURTHER SUBDIVISION OF THIS PROPERTY WILL REQUIRE REVIEW AND APPROVAL BY THE GEORGETOWN-SCOTT COUNTY JOINT PLANNING COMMISSION.

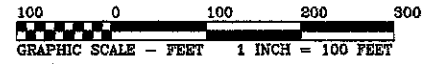


COURSE	BEARING	DISTANCE
C1	Rad: 310.00' Chd: N 08°12'24"E	Arc: 38.08' 38.08'
C2	Rad: 170.00' Chd: N 05°34'58"E	Arc: 17.18' 17.17'
L8	S 40°14'38"W	4.98'

COURSE	BEARING	DISTANCE
C3	Rad: 125.00' Chd: S 48°42'50"E	Arc: 44.23' 44.00'
L4	S 38°34'41"E	76.39'
L5	S 29°15'45"W	53.99'
L6	N 38°34'41"W	96.76'
C7	Rad: 75.00' Chd: N 48°42'50"W	Arc: 28.54' 26.40'

- (A) DB & ASSOCIATES REALTY, LLC
D.B. 353, Pg. 519
PLATCAB. 5, SLIDE 186
0.235 Ac.
- (B) HOWARD PROPERTIES, LLC
D.B. 247, Pg. 681
PLAT CAB. 9, SLIDE 17
0.237 Ac.
- (C) EGT PROPERTIES
D.B. 340, Pg. 422
PLAT CAB. 7, SLIDE 106
0.478 Ac.
- (D) EGT PROPERTIES
D.B. 340, Pg. 422
PLAT CAB. 7, SLIDE 106
1.748 Ac.
- (E) HOWARD PROPERTIES, LLC
D.B. 247, Pg. 681
PLAT CAB. 9, SLIDE 17
0.295 Ac.

- LEGEND**
- 1/2" x 18" STEEL REBAR W/D CAP MARKED MERIDIAN/2536 SET
 - ⊙ 1/2" IRON BAR FOUND
 - ⊕ SURVEYOR'S MAG-NAIL-SET
 - ⊖ SURVEYOR'S MAG-NAIL-FOUND



MERIDIAN ASSOCIATES, LLC
SURVEYORS
 120 EAST MAIN STREET, GEORGETOWN, KY 40324
 TELEPHONE (502) 863-6070 - FACSIMILE (502) 863-0019

JULY 6, 2014
JULY 11, 2014
AUGUST 6, 2014



PLAT DEPICTING DEDICATION OF PUBLIC RIGHT-OF-WAY
IKEBANA DRIVE & BLOSSOM PARK DRIVE
 HOWARD PROPERTIES, LLC - D.B. 247, Pg. 681
 EGT PROPERTIES - D.B. 340, Pg. 422
 DB & ASSOCIATES REALTY, LLC - D.B. 353, Pg. 186
GEORGETOWN, SCOTT COUNTY, KENTUCKY