

Retail | Available



# Multi-Tenant Retail Space

## Pumpkin Patch Development

SWC of Hwy 151 & S Thompson Rd, Sun Prairie, WI

### Contact Us

**Nathan Powers**  
Senior Vice President, CBRE  
+1 414 491 2327  
nathan.powers@cbre.com

**Julie McGaver**  
Transaction Manager, CBRE  
+1 414 429 5165  
julie.mcgaver@cbre.com

**Jeffrey Hundley**  
Owner, Colburn Hundley  
+1 616 437 7812  
jeff@colburnhundley.com





# Property Overview

- Outlot Size

2.5 Acres
- Ground Lease Rate

CONTACT BROKER
- Lease Rate

\$35.00-\$40.00 PSF NNN  
BTS up to 20,000 SF with end caps
- Outlot Sale Price

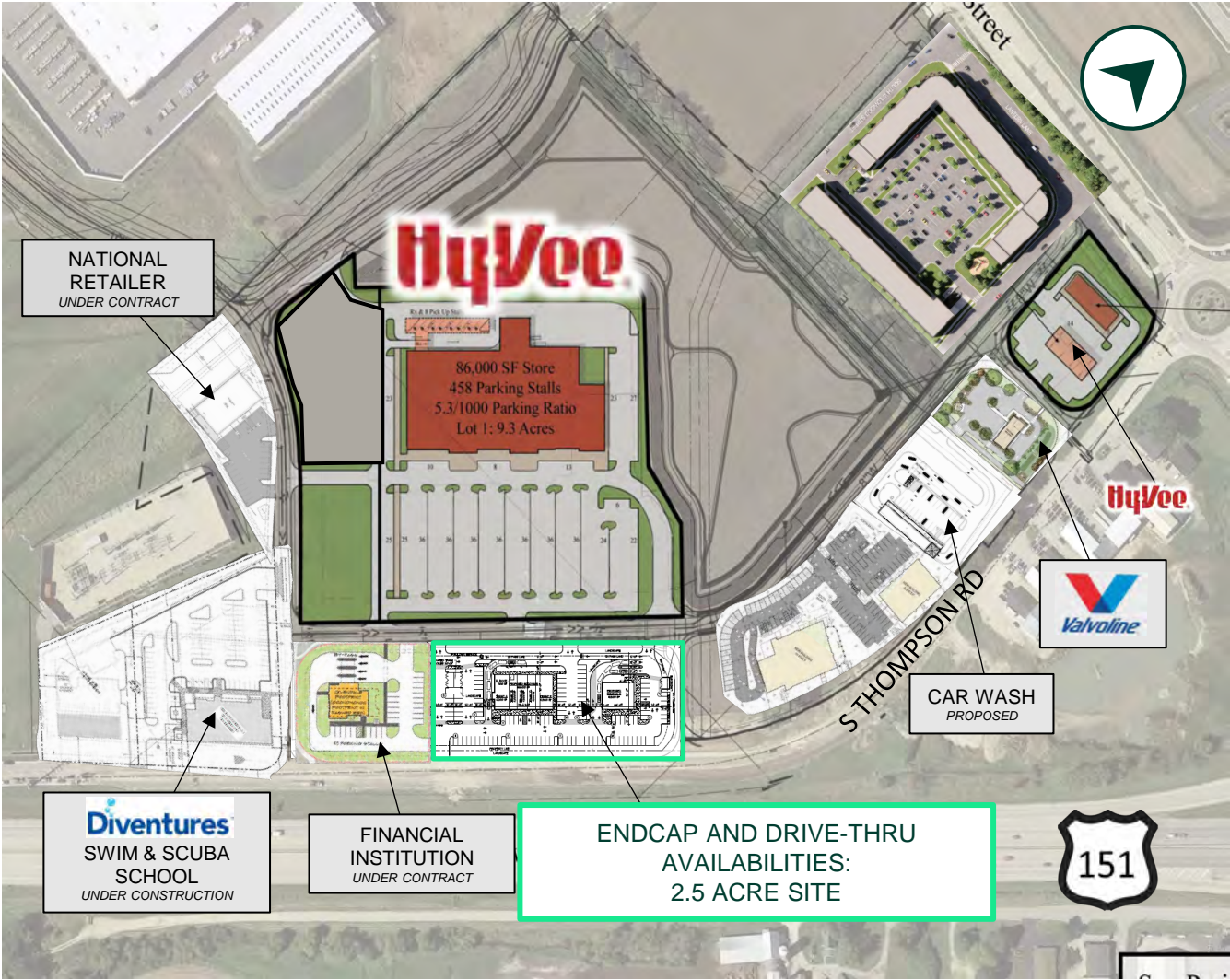
CONTACT BROKER
- Zoning

G-2 Commercial
- Delivery Condition

Pad ready with utilities to property line,  
including storm water.

NOTE: No onsite retention required.  
Pads are net usable (other than setbacks/right-of-ways).

- + Pumpkin Patch is being developed by Colburn Hundley, Inc. as a mixed-use development.
- + Land to the west is owned by Hy-Vee.
- + Great highway visibility! Located at the on/off ramps of US Hwy 151 & W Main St.

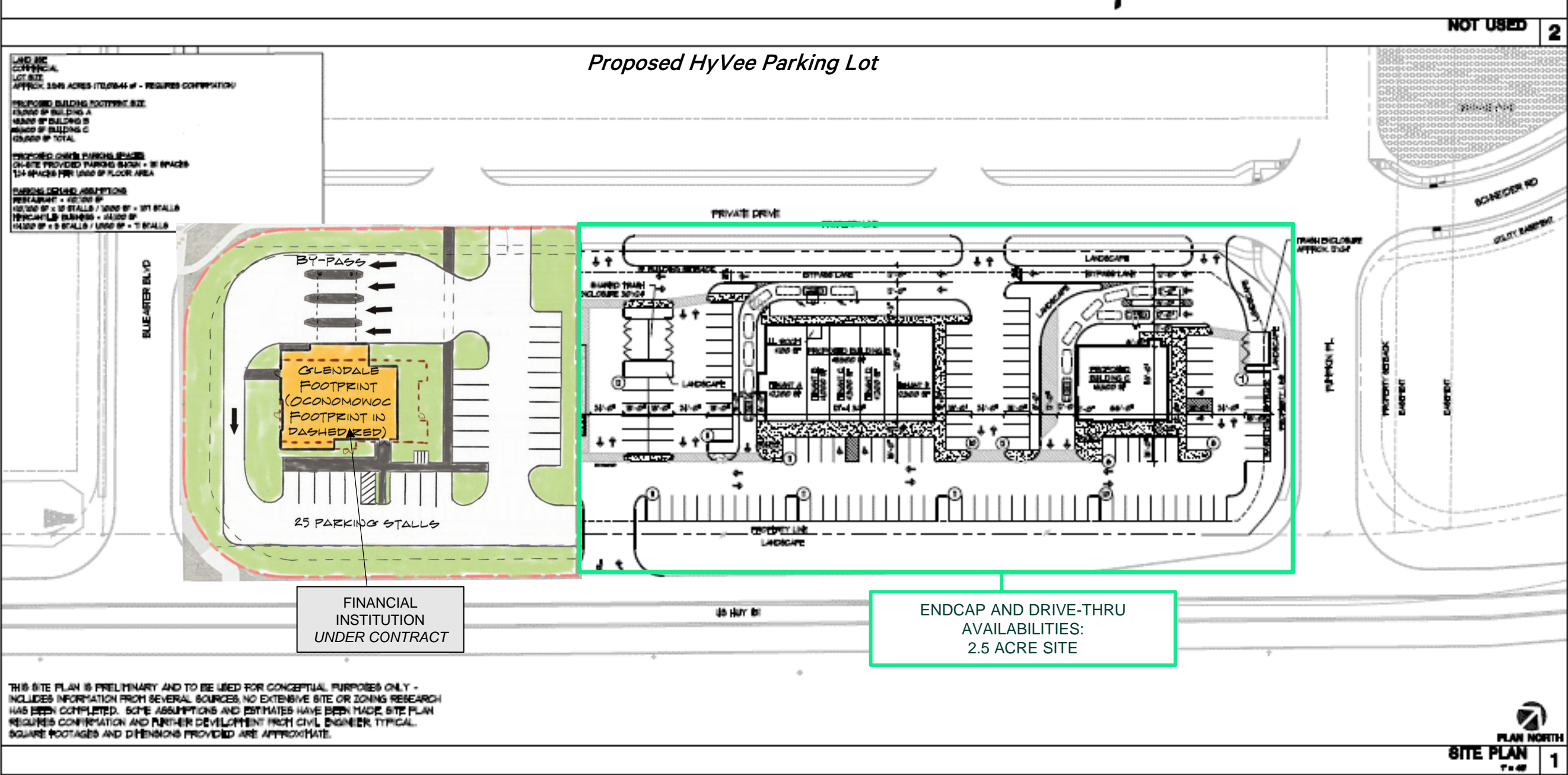


Demographics	1 Mile	3 Miles	5 Miles	Traffic Counts	VPD
Population	10,210	44,707	64,958	W Main St	14,100
Avg HH Income	\$111,820	\$124,046	\$122,950	Hwy 151	52,800
Daytime Population	8,438	39,645	64,725		





Concept Site Plan – Proposed Retail Strip





Multi-Tenant Retail Space – Pumpkin Patch Development

SWC of Hwy 151 & S Thompson Rd | Sun Prairie, WI 53590

Available

Mid Flight Aerial



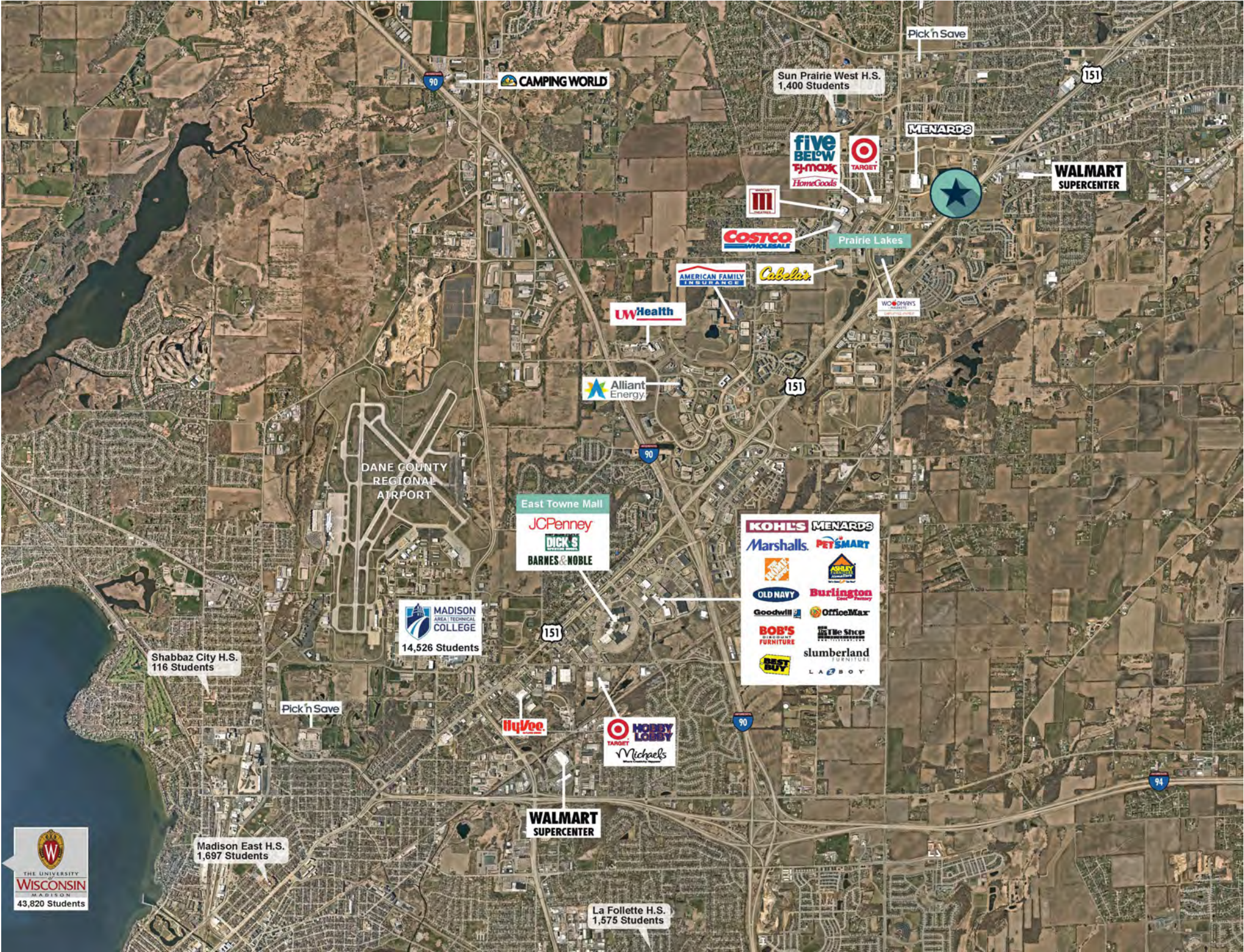


Multi-Tenant Retail Space – Pumpkin Patch Development

SWC of Hwy 151 & S Thompson Rd | Sun Prairie, WI 53590

Available

Sun Prairie Retail Corridor



Contact Us

**Nathan Powers**  
Senior Vice President, CBRE  
+1 414 491 2327  
nathan.powers@cbre.com

**Jeffrey Hundley**  
President, Colburn Hundley  
+1 616 437 7812  
jeff@colburnhundley.com

**Julie McGaver**  
Transaction Manager, CBRE  
+1 414 429 5165  
julie.mcgaver@cbre.com

© 2025 CBRE, Inc. All rights reserved. This information has been obtained from sources believed reliable but has not been verified for accuracy or completeness. CBRE, Inc. makes no guarantee, representation or warranty and accepts no responsibility or liability as to the accuracy, completeness, or reliability of the information contained herein. You should conduct a careful, independent investigation of the property and verify all information. Any reliance on this information is solely at your own risk. CBRE and the CBRE logo are service marks of CBRE, Inc. All other marks displayed on this document are the property of their respective owners, and the use of such marks does not imply any affiliation with or endorsement of CBRE. Photos herein are the property of their respective owners. Use of these images without the express written consent of the owner is prohibited.



# State of Wisconsin Broker Disclosure To Non-Residential Customers



Wisconsin Law requires all real estate licensees to give the following information about brokerage services to prospective customers.

---

Prior to negotiating on your behalf the Broker must provide you the following disclosure statement:

## Broker Disclosure to Customers

You are the customer of the broker. The broker is either an agent of another party in the transaction or a subagent of another broker who is the agent of another party in the transaction. The broker, or a salesperson acting on the behalf of the broker, may provide brokerage services to you. Whenever the broker is providing brokerage services to you, the broker owes you, the customer the following duties:

- The duty to prove brokerage services to you fairly and honestly.
- The duty to exercise reasonable skill and care in providing brokerage services to you.
- The duty to provide you with accurate information about market conditions within a reasonable time if you request it, unless disclosure of the information is prohibited by law.
- The duty to disclose to you in writing certain material adverse facts about a property, unless disclosure of the information is prohibited by law (see “Definition of Material Adverse Facts” below).
- The duty to protect your confidentiality. Unless the law requires it, the broker will not disclose your confidential information of other parties.
- The duty to safeguard trust funds and other property the broker holds.
- The duty, when negotiating, to present contract proposals in an objective & unbiased manner and disclose the advantages and disadvantages of the proposals.

Please review this information carefully. A broker or salesperson can answer your questions about brokerage services, but if you need legal advice, tax advice, or a professional home inspection, contact an attorney, tax advisor, or home inspector. This disclosure is required by section 452.135 of the Wisconsin Statutes and is for information only. It is a plain language summary of a broker’s duties to a customer under section 452.133(l) of the Wisconsin Statutes.

## Confidentiality Notice to Customers

Broker will keep confidential any information given to broker in confidence, or any information obtained by broker that he or she knows a reasonable person would want to be kept confidential by law, or authorize the broker to disclose particular information. A broker shall continue to keep the information confidential after broker is no longer providing brokerage services to you.

The following information is required to be disclosed by law.

1. Material adverse facts, as defined in section 452.01(5g) of the Wisconsin statutes (see “definition of material adverse facts” below).
2. Any facts known by the broker that contradict any information included in a written inspection report on the property or real estate that is the subject of the transaction. To ensure that the broker is aware of what specific information below. At a later time, you may also provide the broker with other information that you consider to be confidential.

CONFIDENTIAL INFORMATION: \_\_\_\_\_

NON-CONFIDENTIAL INFORMATION (The following information may be disclosed by Broker): \_\_\_\_\_

\_\_\_\_\_  
(Insert information you authorize to broker to disclose such as financial qualification information)

## Consent to Telephone Solicitation

I/We agree that the Broker and any affiliated settlement service providers (for example, a mortgage company or title company) may call our/my home or cell phone numbers regarding issues, goods and services related to the real estate transaction until I/ we withdraw this consent in writing. List Home/Cell Numbers: \_\_\_\_\_

## Sex Offender Registry

*Notice: You may obtain information about the sex offender registry and persons registered with the registry by contacting the Wisconsin Department of Corrections on the Internet at <http://offender.doc.state.wi.us/public/> or by phone at (608)240-5830.<http://offender.doc.state.wi.us/public/> or by phone at (608) 240-5830.*

## Definition of Material Adverse Facts

A “material adverse fact” is defined in Wis. Stat. 452.01 (5g) as an adverse fact that a party indicates is of such significance, or that is generally recognized by a competent licensee as being of such significance to a reasonable party that it affects or would affect the party’s decision to enter into a contract or agreement concerning a transaction or affects or would affect the party’s decision about the terms of such a contract or agreement. An “adverse fact” is defined in Wis. Stat. 452.01 (1e) as a condition or occurrence that a competent licensee generally recognizes will significantly adversely affect the value of the property, significantly reduce the structural integrity of improvements to real estate, or present a significant health risk to occupants of the property, or information that indicates that a party to a transaction is not able to or does not intend to meet his or her obligations under a contract or agreement made concerning the transaction.

*No representation is made as to the legal validity of any provision or the adequacy of any provision on any specific transaction.*