

AXIS 360

COMMERCIAL REAL ESTATE

3001½ Gill St.
Suite A
Bloomington, Illinois

www.axis360.co



FOR SALE: 21,762 Sq. Ft. Industrial Flex Buildings

ADDRESS

1011-1015 E. Lafayette
Bloomington, Illinois

SIZE

19,602 + 2,160 sq. ft.

ASKING

\$1,200,000

ZONED

M-1 (Restricted Manufacturing)

LOT SIZE

3.60 acres

PARCEL

21-10-351-049

UTILITIES

City water & sewer
Electric
Gas

Building Highlights

- ◆ Two 10-foot Dock Doors
- ◆ New \$400K Roof in 2023
- ◆ 3-Phase Electric
- ◆ Fully Sprinklered
- ◆ LED Lighting
- ◆ 7 Rooftop HVAC units
- ◆ Heated and cooled throughout
- ◆ Plenty of parking
- ◆ Laundry Equipment can stay or go
- ◆ Filtered Drain System



Main Building
15,067 sq. ft. warehouse
4,535 sq. ft. office

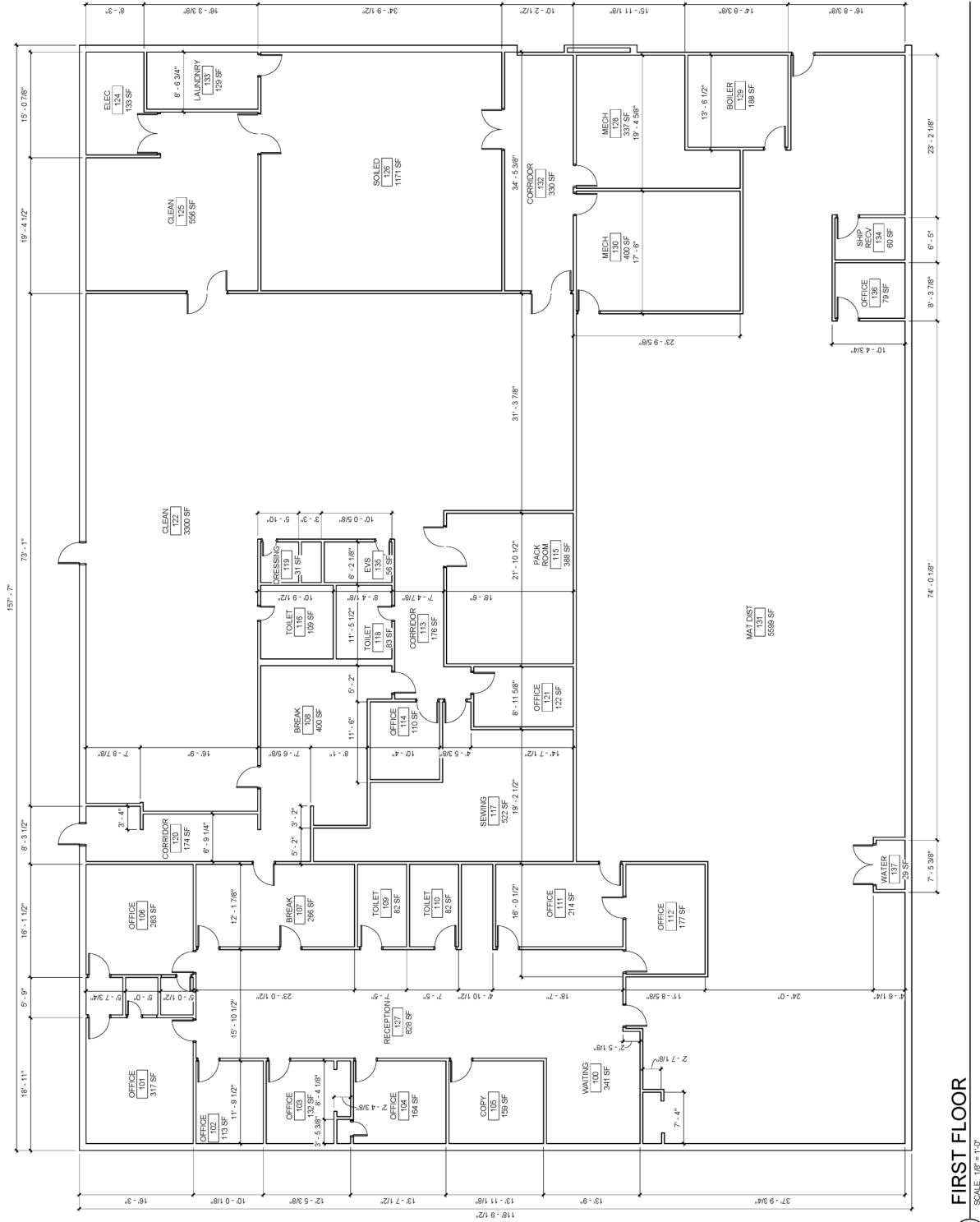
Pole Building
2,160 sq. ft.

Laura Pritts
Designated Managing Broker
lptritts@axis360.co
(309) 824-0507

Visit our Website:
www.axis360.co







1 FIRST FLOOR
SCALE: 1/8" = 1'-0"