

As exclusive agents, Signature Partners is proud to offer the following commercial cooperative for sale or lease:

534 West 42nd St

BETWEEN 10TH & 11TH AVENUES • CONDOMINIUM FOR SALE OR LEASE

PRIME CONDO SALE or LEASE OPPORTUNITY

Ground Floor Space: 182 SF

Compact retail condo with 42nd Street exposure. Only a block from Hudson River tourist destinations: Pier 84 Boathouse and Circle Line. A short walk to the Intrepid Museum. Hundreds of luxury residential apartments and residents nearby.

2 blocks from the renowned Beacon High School.

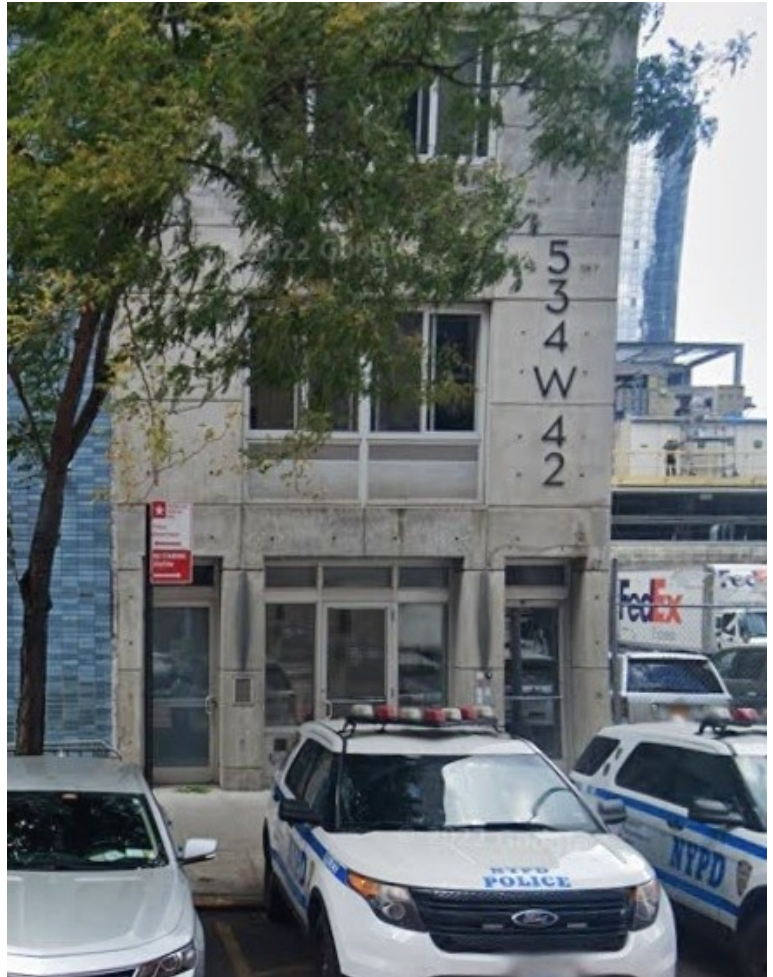
Perfect for dry retail use:

- Tobacco Store, convenience store, satellite office, ATM

Expenses:

Common Charge: \$769.02 Monthly

Taxes: \$5,642.00 Annually

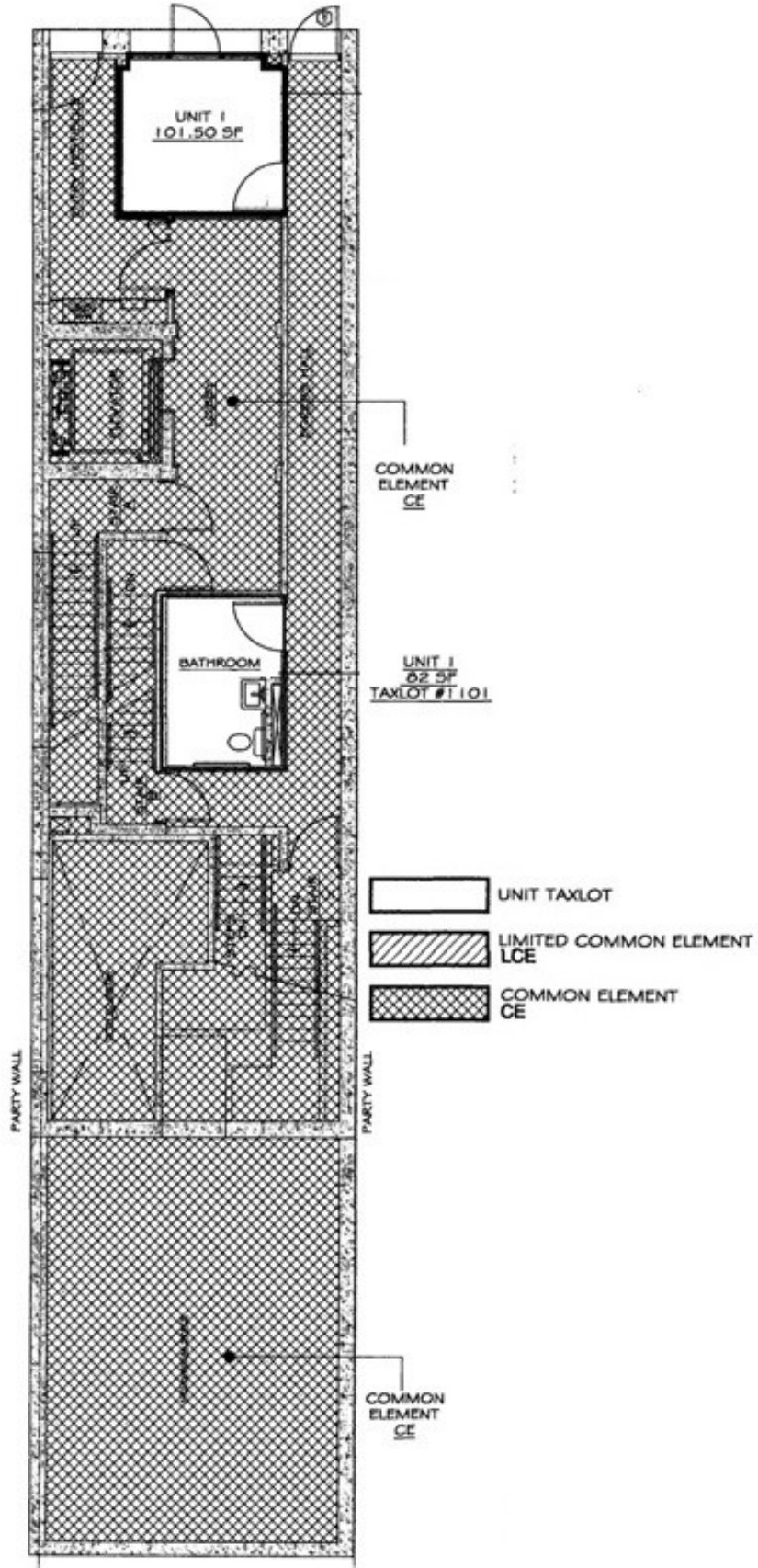


SIGNATURE
www.signaturepartners.com

MICHAEL PINNEY
(212) 813-3573
pinney@signaturepartners.com

534 West 42nd

BETWEEN 10th & 11th AVENUES



www.signaturepartners.com

MICHAEL PINNEY

(212) 813-3573

pinney@signaturepartners.com