



**Keegan & Coppin**  
COMPANY, INC.

FOR LEASE

405 ENFRENTE ROAD  
NOVATO, CA

OFFICE SPACE  
FOR LEASE



REPRESENTED BY:

**NATHAN BALLARD, PARTNER**  
LIC # 01743417 (415) 461-1010, EXT 116  
[NBALLARD@KEEGANCOPPIN.COM](mailto:NBALLARD@KEEGANCOPPIN.COM)

**VESA BECAM, PARTNER**  
LIC # 01459190 (415) 461-1010, EXT 114  
[VESA@KEEGANCOPPIN.COM](mailto:VESA@KEEGANCOPPIN.COM)

**MATT STORMS, PARTNER**  
LIC # 01233478 (415) 461-1010, EXT 123  
[MSTORMS@KEEGANCOPPIN.COM](mailto:MSTORMS@KEEGANCOPPIN.COM)



# OFFICE SPACE FOR LEASE

## PROPERTY INFORMATION

### HIGHLIGHTS

- Well-maintained property
- Convenient location
- Immediate freeway access
- Great window line

### DESCRIPTION OF OFFICE SPACE

- Suite 100:** 850+/- sq ft  
First floor office space. Reception, two private offices and storage. Great window line.
- Suite 120:** 980+/- sq ft  
Efficient office space with one private office, a large open work area, and an abundance of natural light.
- Suite 200:** 1,564+/- sq ft  
Well appointed second floor office space offering a general purpose configuration and good natural light.

### DESCRIPTION OF AREA

This office building is very well maintained and provides high quality space in a convenient locale. Quiet creekside location with immediate freeway access.



405 ENFRENTE ROAD  
NOVATO, CA

### LEASE TERMS

**Space Size**

850 - 1,564+/- sq ft

**Building Size**

5,000+/- sq ft

**Rate**

\$2.00 per sq ft

**Load Factor**

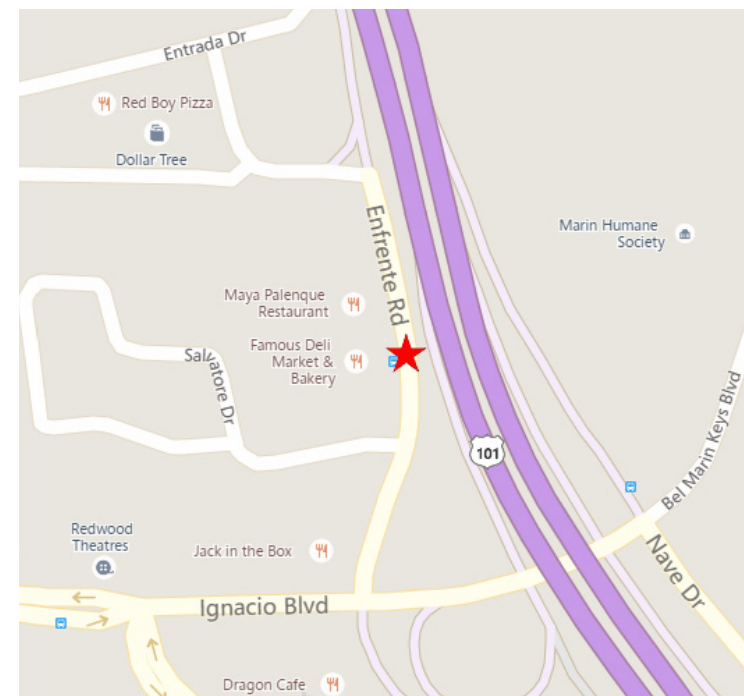
10%

**Parking**

4:1,000

**Terms**

Gross unserviced  
Tenant pays increases in operating expenses over base year.

**REPRESENTED BY:**

**NATHAN BALLARD, PARTNER**  
LIC # 01743417 (415) 461-1010, EXT 116  
NBALLARD@KEEGANCOPPIN.COM

**VESA BECAM, PARTNER**  
LIC # 01459190 (415) 461-1010, EXT 114  
VESA@KEEGANCOPPIN.COM

**MATT STORMS, PARTNER**  
LIC # 01233478 (415) 461-1010, EXT 123  
MSTORMS@KEEGANCOPPIN.COM



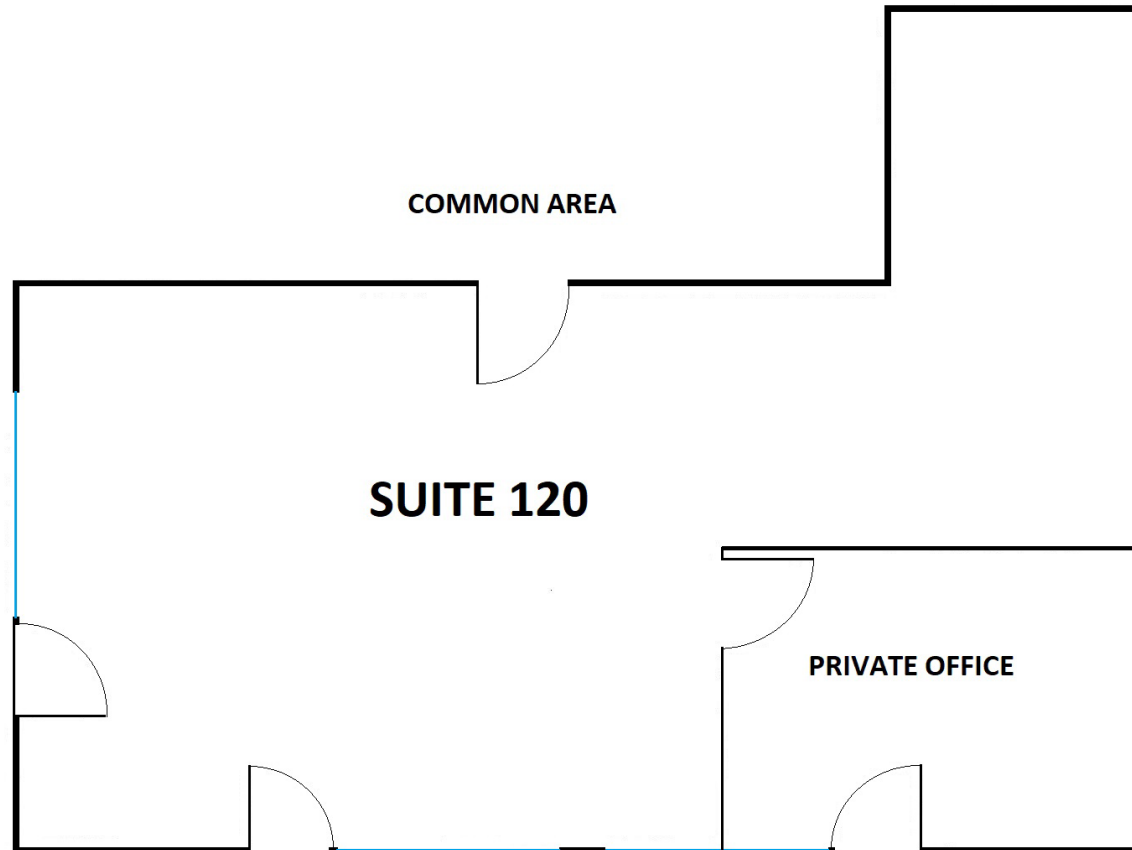
# FLOOR PLAN



405 ENFRENTE ROAD

NOVATO, CA

SUITE 120: 980+/- SF



**REPRESENTED BY:**

**NATHAN BALLARD, PARTNER**  
 LIC # 01743417 (415) 461-1010, EXT 116  
 NBALLARD@KEEGANCOPPIN.COM

**VESA BECAM, PARTNER**  
 LIC # 01459190 (415) 461-1010, EXT 114  
 VESA@KEEGANCOPPIN.COM

**MATT STORMS, PARTNER**  
 LIC # 01233478 (415) 461-1010, EXT 123  
 MSTORMS@KEEGANCOPPIN.COM

The above information, while not guaranteed, has been secured from sources we believe to be reliable. Submitted subject to error, change or withdrawal. An interested party should verify the status of the property and the information herein.



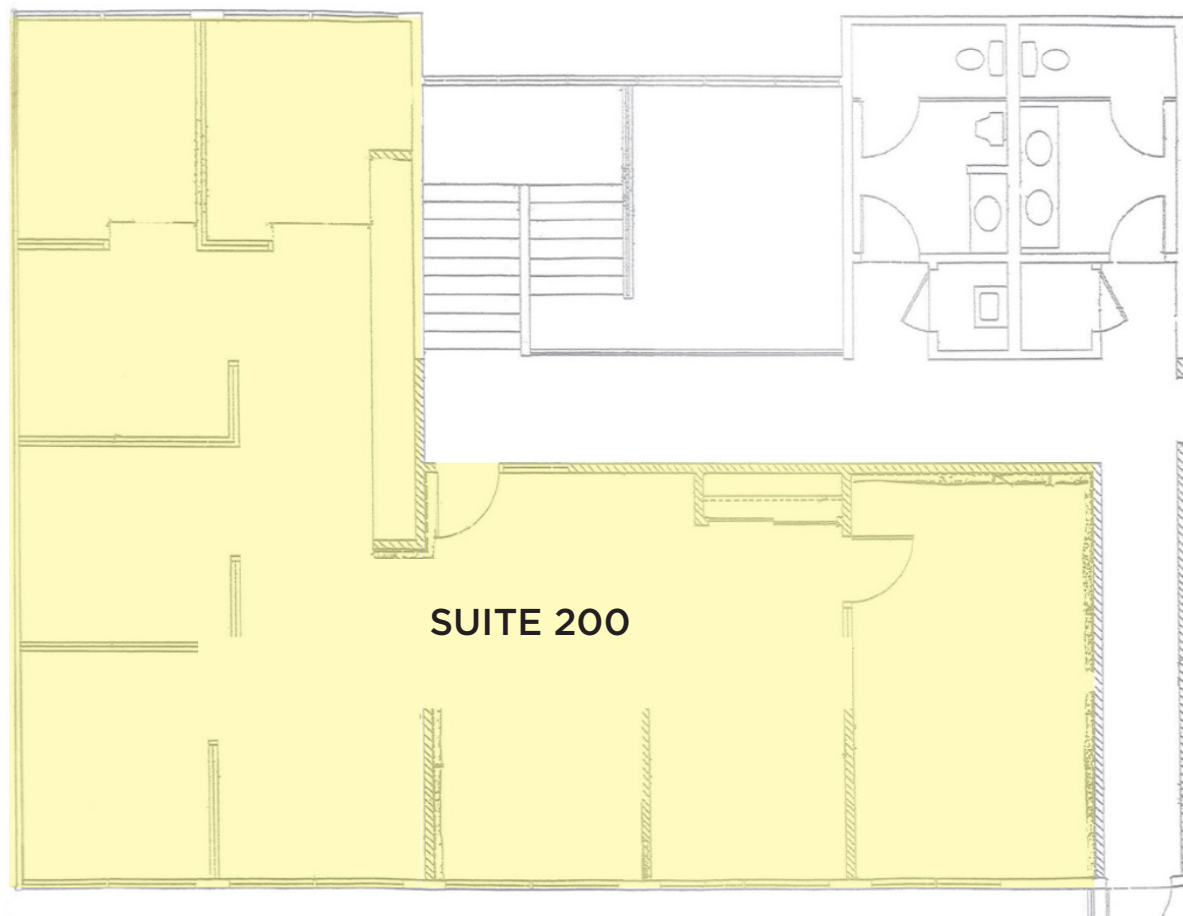
# FLOOR PLAN



405 ENFRENTE ROAD

NOVATO, CA

SUITE 200: 1,564+/- SF



**REPRESENTED BY:**

**NATHAN BALLARD, PARTNER**  
LIC # 01743417 (415) 461-1010, EXT 116  
NBALLARD@KEEGANCOPPIN.COM

**VESA BECAM, PARTNER**  
LIC # 01459190 (415) 461-1010, EXT 114  
VESA@KEEGANCOPPIN.COM

**MATT STORMS, PARTNER**  
LIC # 01233478 (415) 461-1010, EXT 123  
MSTORMS@KEEGANCOPPIN.COM

The above information, while not guaranteed, has been secured from sources we believe to be reliable. Submitted subject to error, change or withdrawal. An interested party should verify the status of the property and the information herein.