



# 560-568

## Brannan Street

San Francisco, CA 94107

### For Lease

---

Divisible to as little as 2168 SF  
**+/- 14,722 RSF**

**Mark Meier**

mark@starboardcre.com  
415.299.7042

**Craig Hansson**

craig@starboardcre.com  
415.710.7768





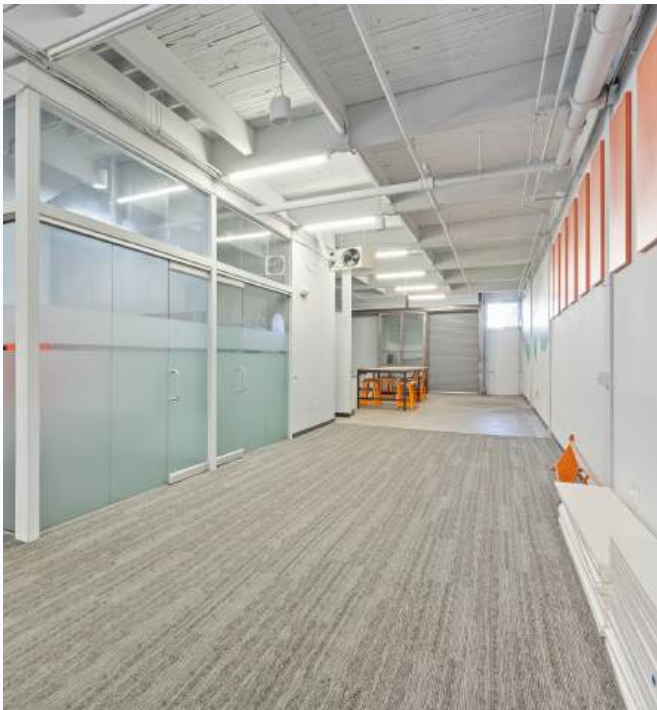
# 568 Brannan Suite A

## Overview

### Highlights

- Rentable SF: +/- 2,180 Square Ft
- Ground Floor Flex Space
- Drive in Access
- Two Offices
- Kitchenette
- High Ceilings
- Full HVAC
- Cool Outdoor Patio

Matterport View



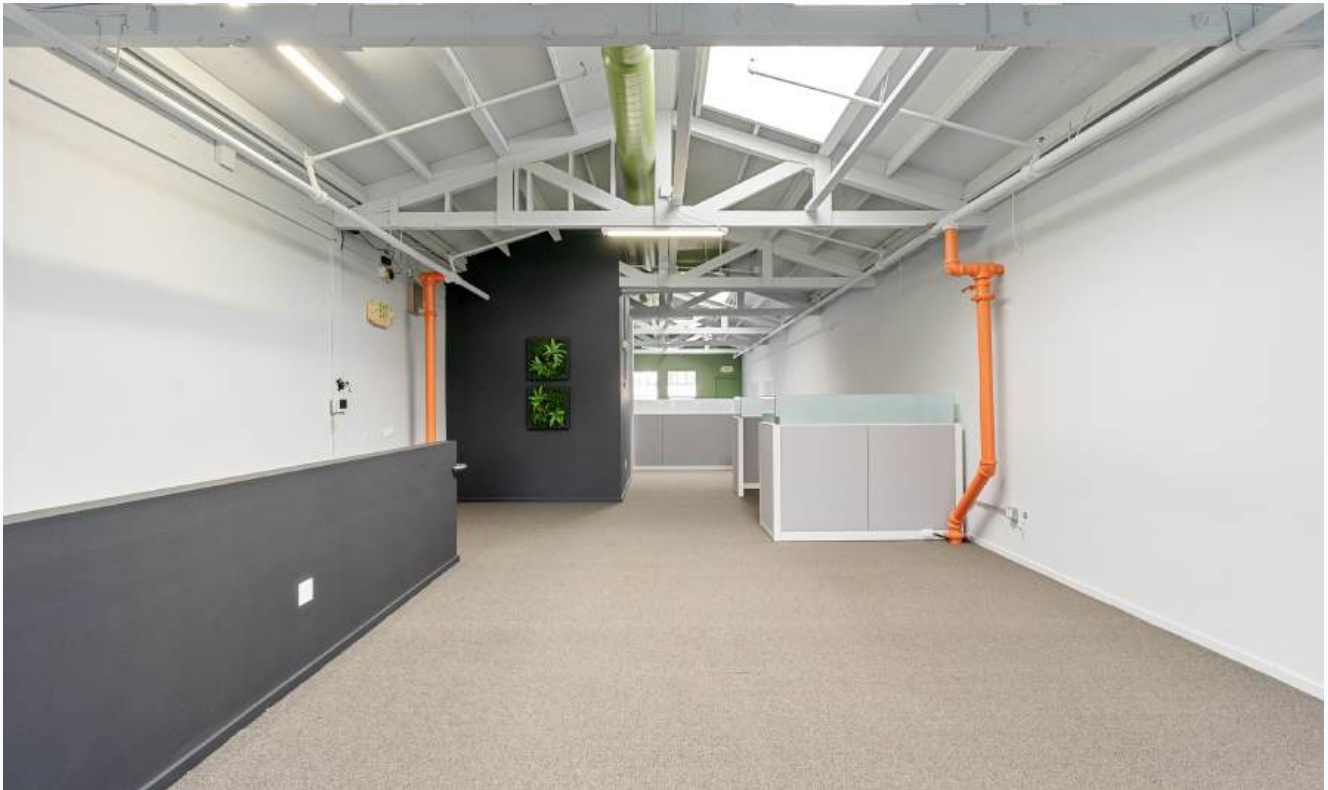
# 568 Brannan Suite B

## Overview

### Highlights

Matterport View

- Rentable SF: 2,180 Square Ft
- 2nd Floor walk-up
- Bow Truss Ceilings
- Skylights throughout
- Two Offices



# 566 Brannan Suite A

## Overview

### Highlights

- Rentable SF: 2,640 Square Ft
- Ground Floor Drive in Access
- Two Offices
- Two Roll Up Doors
- High Ceilings
- Kitchenette
- Direct Access to the Parking Lot
- Full HVAC
- Concrete Floors

Matterport View



# 566 Brannan Suite B

## Overview

### Highlights

Matterport View

- Rentable sqft: 2,640 Square Ft
- Hardwood Floors throughout the space
- One Conference Room
- Open Plan for up to 15 People
- Kitchenette
- Full HVAC
- Plenty of Natural Light



# 560 Brannan Suite B

## Overview

### Highlights

Matterport View

- Rentable sqft: 2,644 Square Ft
- Highly Creative 2nd floor suite
- Direct street access onto Brannan
- One Large Conference Room
- Three Call Rooms
- Full HVAC
- Kitchenette



# IMAGE





# AGENTS



## Mark Meier

Senior Leasing & Sales Associate  
mark@starboardcre.com  
CELL: 415.299.7042  
CA DRE # 02047169

Call

View Profile



## Craig Hansson

Vice President  
craig@starboardcre.com  
CELL: 415.710.7768  
CA DRE #01841643

Call

View Profile





**STARBOARD CRE**  
LOCAL • INDEPENDENT • ENTREPRENEURIAL

STARBOARDCRE.COM  
49 POWELL STREET, SAN FRANCISCO, CA 94102



### Unique Vision

We see what others miss

### Local Market Leader

No one knows Northern  
California like we do

### Full-Service Firm

We do it all

Locally based, and technology-forward, our brokers are highly qualified experts backed by a full-service, in-house support team who understand the intricacies of San Francisco real estate. Starboard CRE brings decades of brokerage experience representing over 600 million square feet of space with an aggregate lease value of over 10 billion and investments sold over 3 billion.



**CA DRE# 01103056**