



# LAUREL PLACE FOR LEASE

Lease Price:  
\$26 psf  
Full Service

5102 W Laurel St. • Tampa FL 33607



## BUILDING FEATURES

- ❖ 5,035 sf and 8,339 sf professional office suites available October 1, 2022
- ❖ Located in highly desirable Westshore district
- ❖ Professional Single Story Office Building - Newly Renovated Common Areas
- ❖ Enjoy the convenience of a full service lease-rent is all inclusive!
- ❖ Close to Tampa International Airport, International Plaza, Raymond James Stadium & Westshore Shopping Center
- ❖ Excellent Parking with a ratio of 5/1000 sf
- ❖ Easy ingress/egress from W. Laurel St & N. O'Brien St.



## COMMERCIAL ASSET PARTNERS



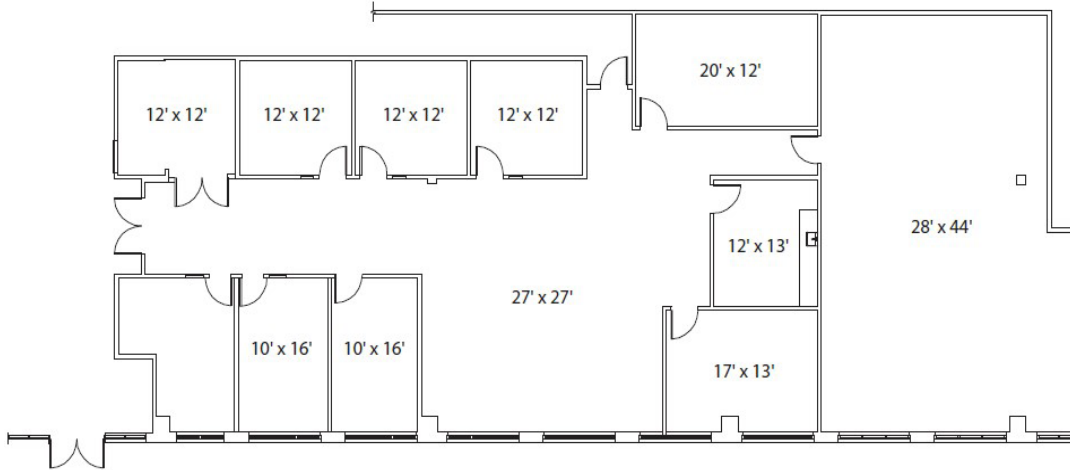
Renee Opland  
Commercial Associate  
Cell: (314) 520-3426  
Office: (727) 376-4900  
ropland@cap-realty.com





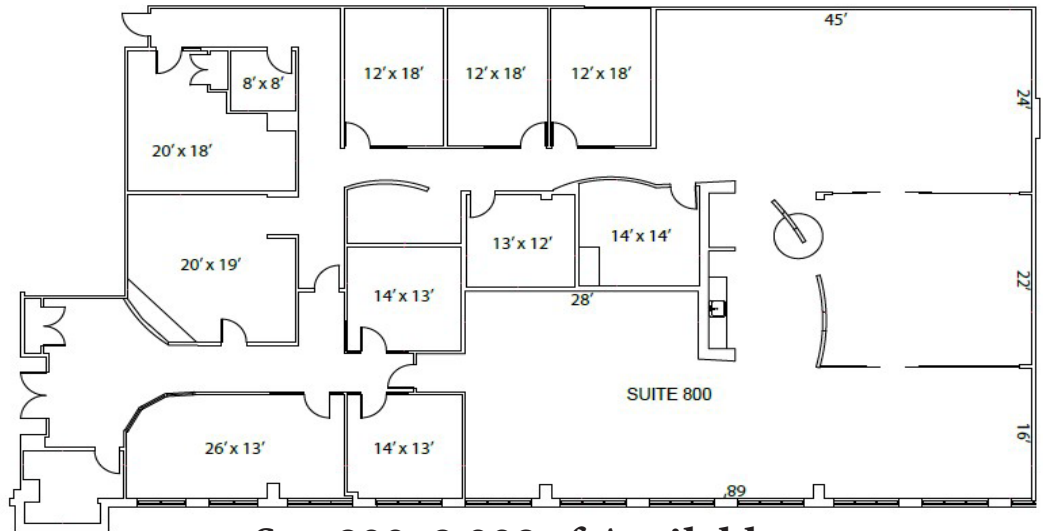
# Laurel Place

5102 W Laurel St • Tampa FL 33607



**Ste. 400: 5,035 sf Available**

**Available  
Floor Plans**



**Ste. 800: 8,339 sf Available**

