

# AUSTELL RD AUTO REPAIR/WAREHOUSE

1708 Austell Rd SE, Marietta, GA 30008



**Cravens Doggett**

*KW Chattahoochee North D/B/A Trinity CRE*

*678-852-3833*

*cravens@kw.com*



**2**

**Property Info &  
Disclaimer**

**3**

**Property Description**

**4**

**Property Photos**

**9**

**Demographic Analysis**

**24**

**Aerial & Location Report**

**AUSTELL RD AUTO  
REPAIR/WAREHOUSE**

# TABLE OF CONTENTS

# AUSTELL RD AUTO REPAIR/WAREHOUSE

## PROPERTY INFORMATION

### PURCHASE PRICE

**\$1,200,000.00**

### PROPERTY ADDRESS

**1708 Austell Rd SE  
Marietta, GA 30008**

### YEAR BUILT

**1958**

### PROPERTY SIZE

**6,589 Sq. Ft.**

### LAND SIZE

**0.50 Sq. Ft.**

**1708 Austell Rd SE  
Marietta, GA 30008**

### Company Disclaimer

This information has been obtained from sources believed reliable. We have not verified it and make no guarantee, warranty or representation about it. Any projections, opinions, assumptions or estimates used are for example only and do not represent the current or future performance of the property. You and your advisors should conduct a careful, independent investigation of the property to determine to your satisfaction the suitability of the property for your needs. Photos herein are the property of their respective owners and use of these images without the express written consent of the owner is prohibited..



# PROPERTY OVERVIEW

Discover a premier owner/user or investment opportunity Cobb County! The Austell Rd Auto Repair/Warehouse spans 6,589 SF, presenting a versatile opportunity to have retail and warehouse space at the same property. It's an excellent location proven by the ± 29K cars that go by there everyday. Its adaptable space caters to diverse business needs, from auto repair to warehousing, enhancing its appeal to a broad user and tenant base. With the area's ongoing growth and development, this property offers significant upside potential. Don't miss out on this exceptional opportunity!



## AUSTELL RD AUTO REPAIR/WAREHOUSE

1708 Austell Rd SE, Marietta, GA 30008



# PROPERTY PHOTOS



## AUSTELL RD AUTO REPAIR/WAREHOUSE

1708 Austell Rd SE, Marietta, GA 30008

# PROPERTY PHOTOS



## AUSTELL RD AUTO REPAIR/WAREHOUSE

1708 Austell Rd SE, Marietta, GA 30008



# PROPERTY PHOTOS



## AUSTELL RD AUTO REPAIR/WAREHOUSE

1708 Austell Rd SE, Marietta, GA 30008



# PROPERTY PHOTOS



## AUSTELL RD AUTO REPAIR/WAREHOUSE

1708 Austell Rd SE, Marietta, GA 30008



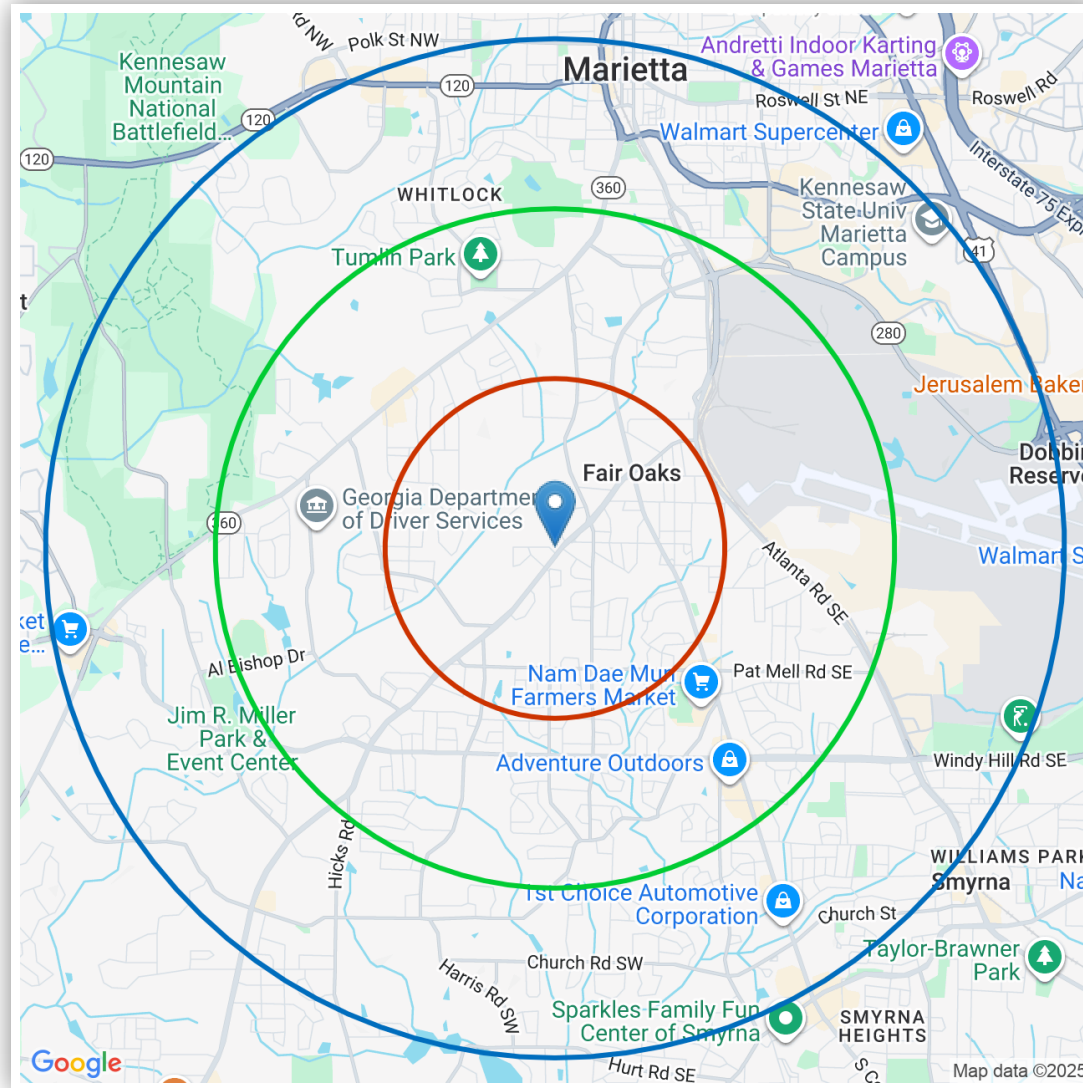
# PROPERTY PHOTOS



## AUSTELL RD AUTO REPAIR/WAREHOUSE

1708 Austell Rd SE, Marietta, GA 30008

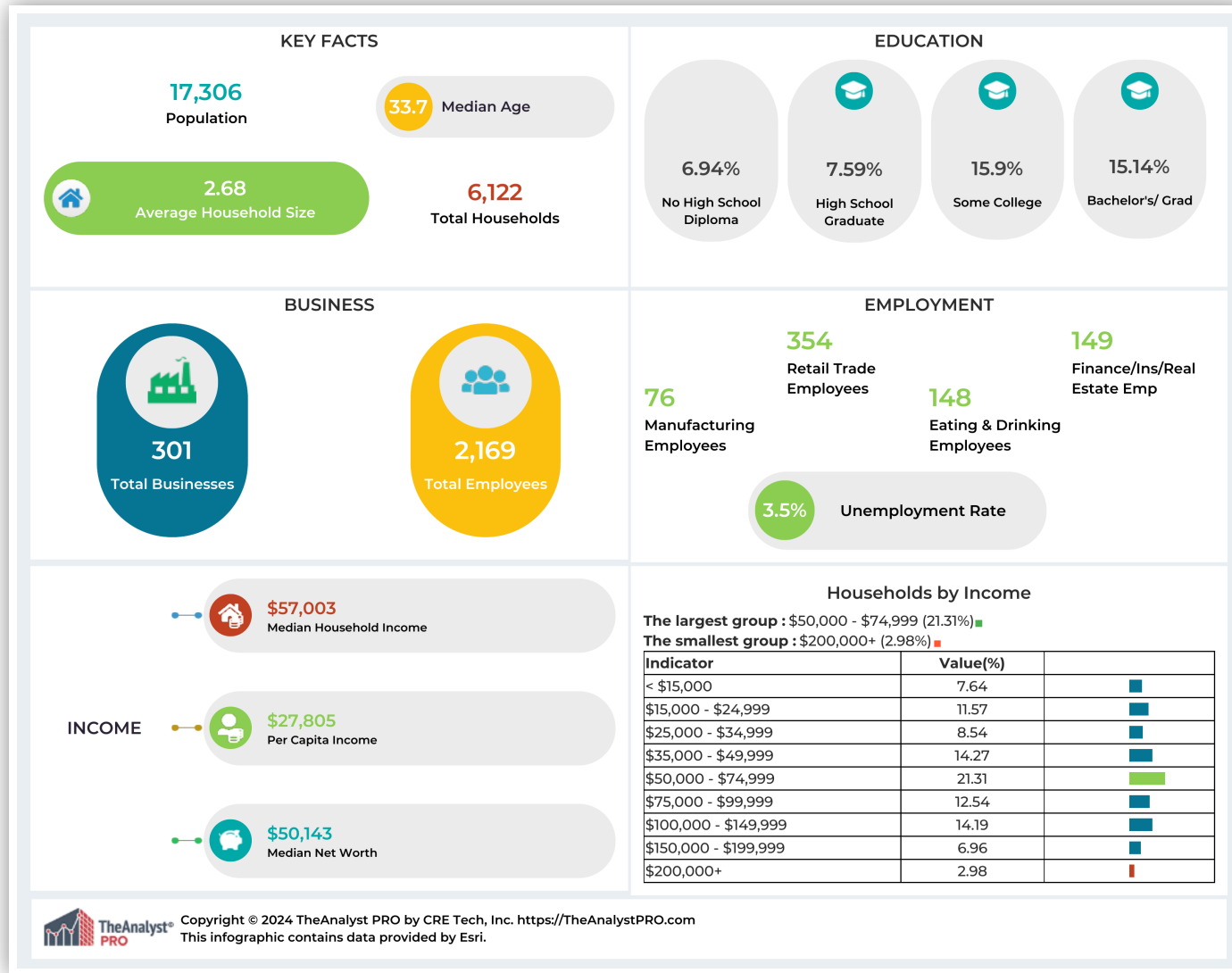
# LOCATION/STUDY AREA MAP (RINGS: 1, 2, 3 MILE RADIUS)



**AUSTELL RD AUTO REPAIR/WAREHOUSE**  
1708 Austell Rd SE, Marietta, GA, 30008

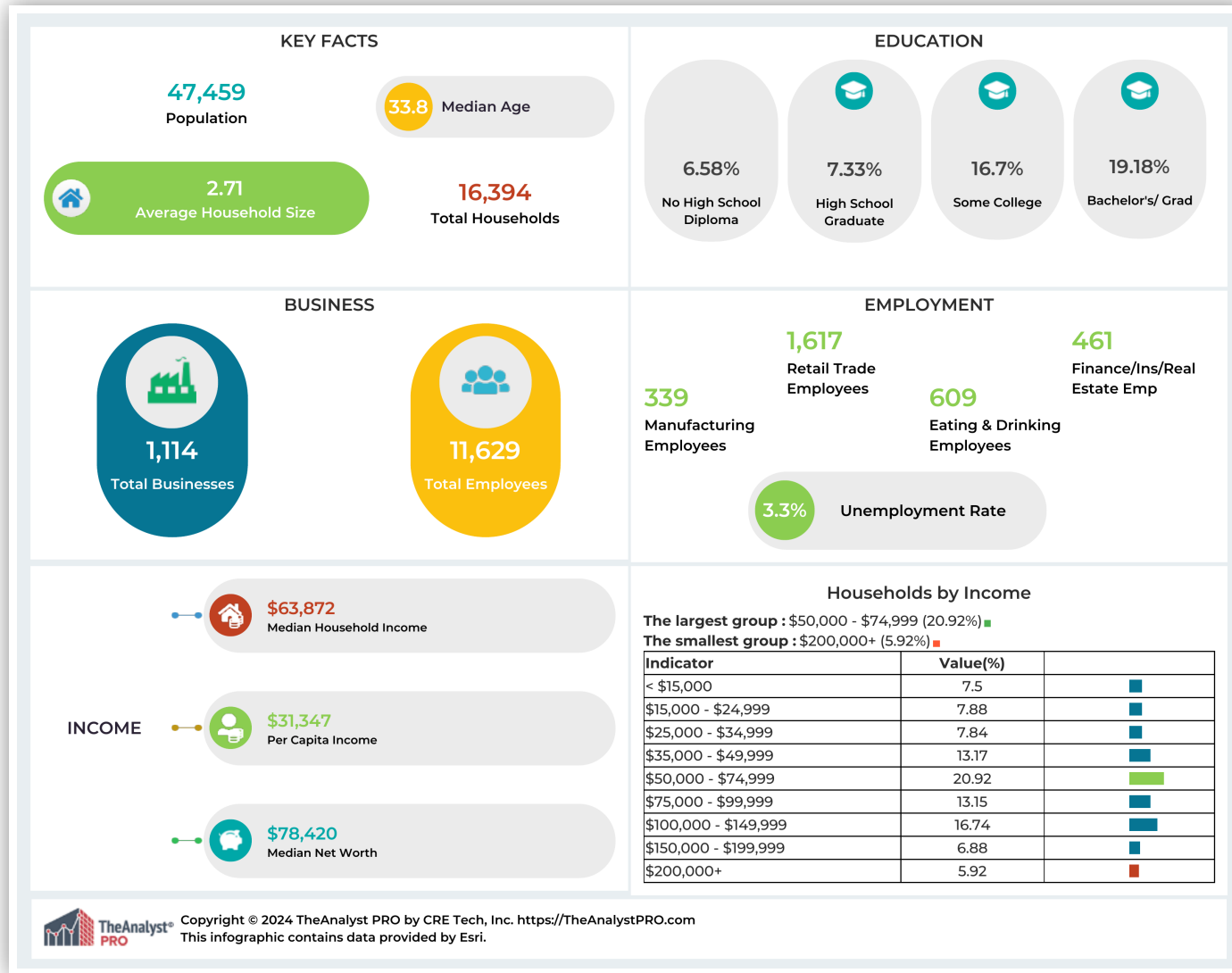


# INFOGRAPHIC: KEY FACTS (RING: 1 MILE RADIUS)



**AUSTELL RD AUTO REPAIR/WAREHOUSE**  
1708 Austell Rd SE, Marietta, GA, 30008

# INFOGRAPHIC: KEY FACTS (RING: 2 MILE RADIUS)

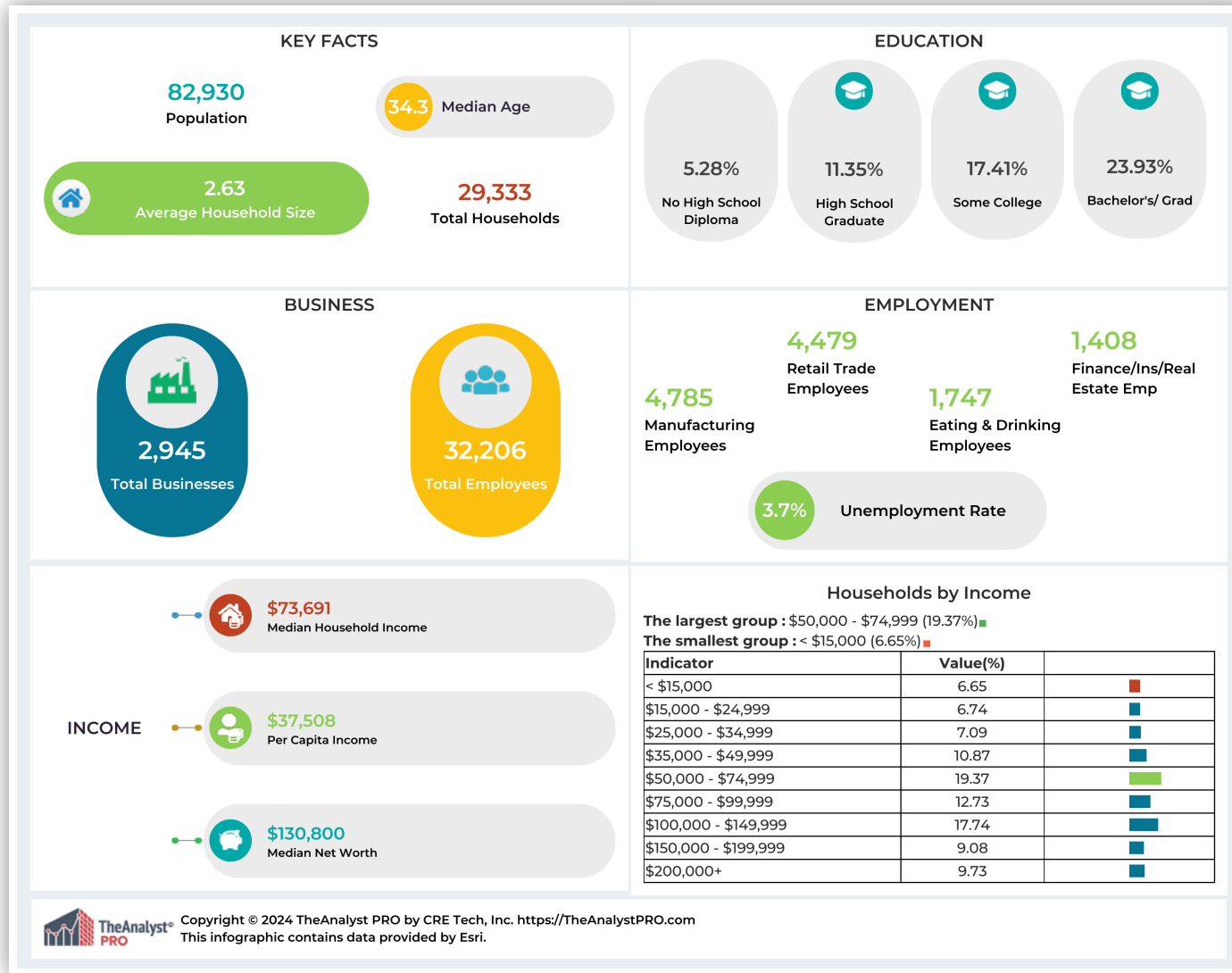


## AUSTELL RD AUTO REPAIR/WAREHOUSE

1708 Austell Rd SE, Marietta, GA, 30008



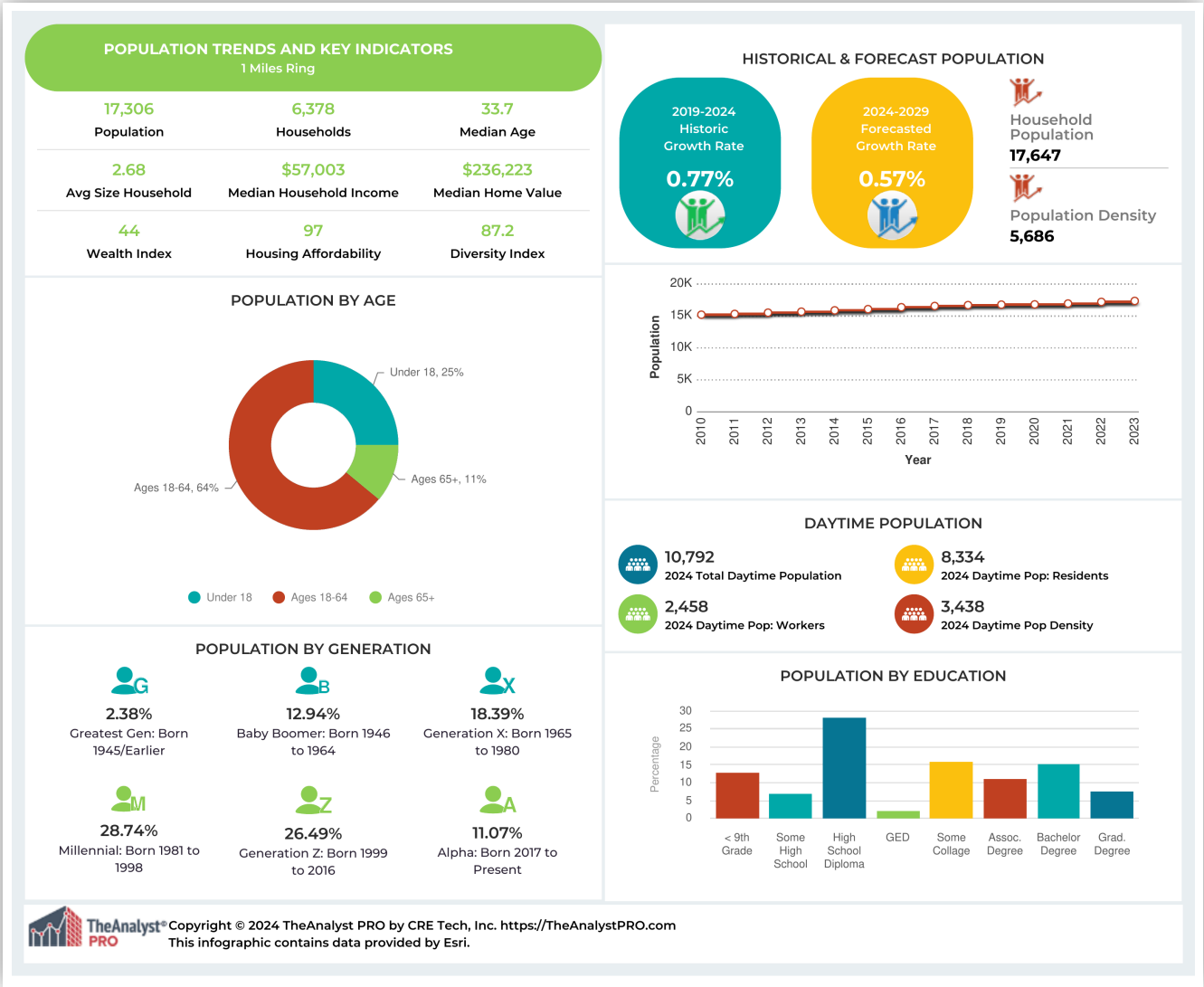
# INFOGRAPHIC: KEY FACTS (RING: 3 MILE RADIUS)



## AUSTELL RD AUTO REPAIR/WAREHOUSE

1708 Austell Rd SE, Marietta, GA, 30008

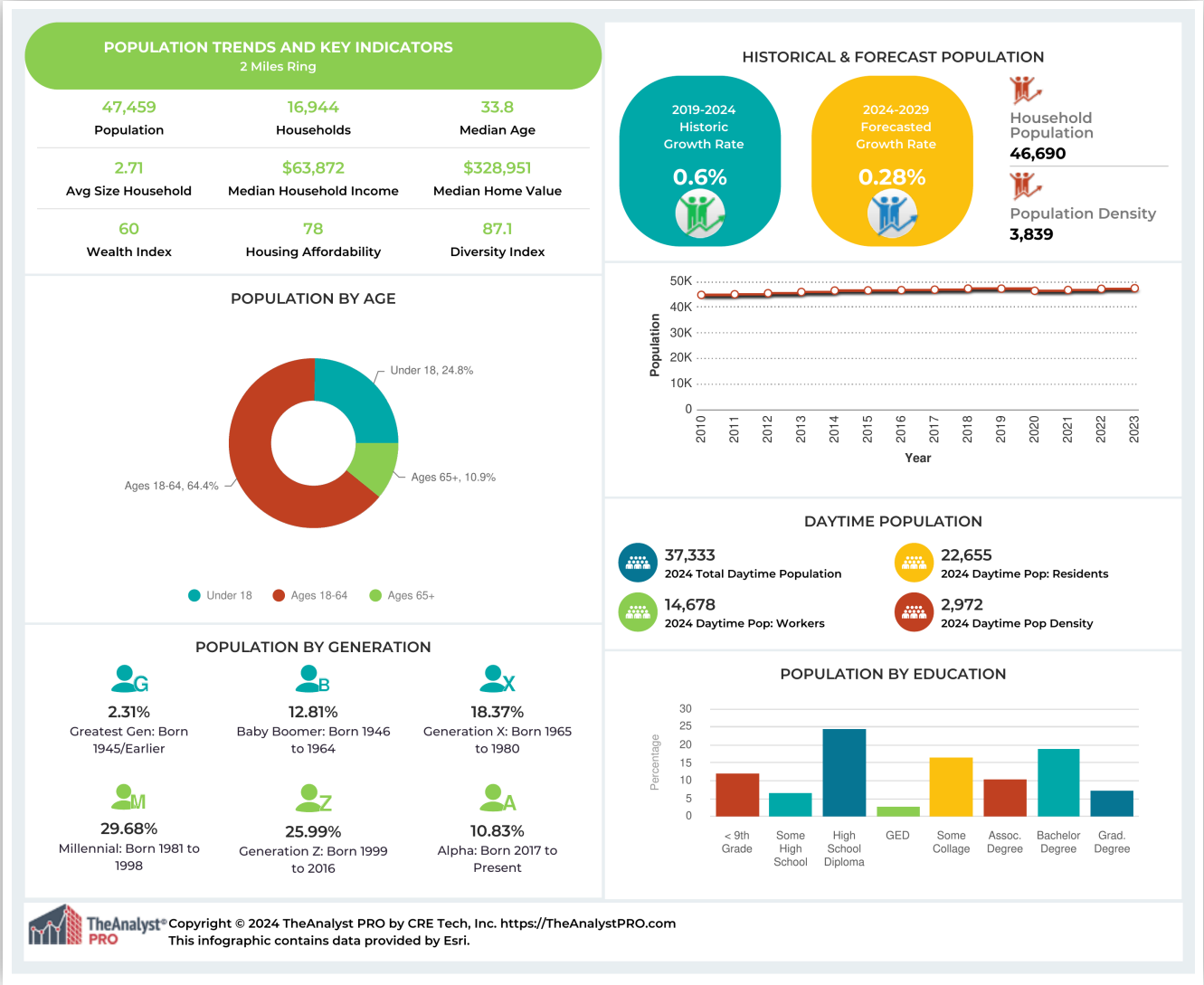
# INFOGRAPHIC: POPULATION TRENDS (RING: 1 MILE RADIUS)



AUSTELL RD AUTO REPAIR/WAREHOUSE  
1708 Austell Rd SE, Marietta, GA, 30008

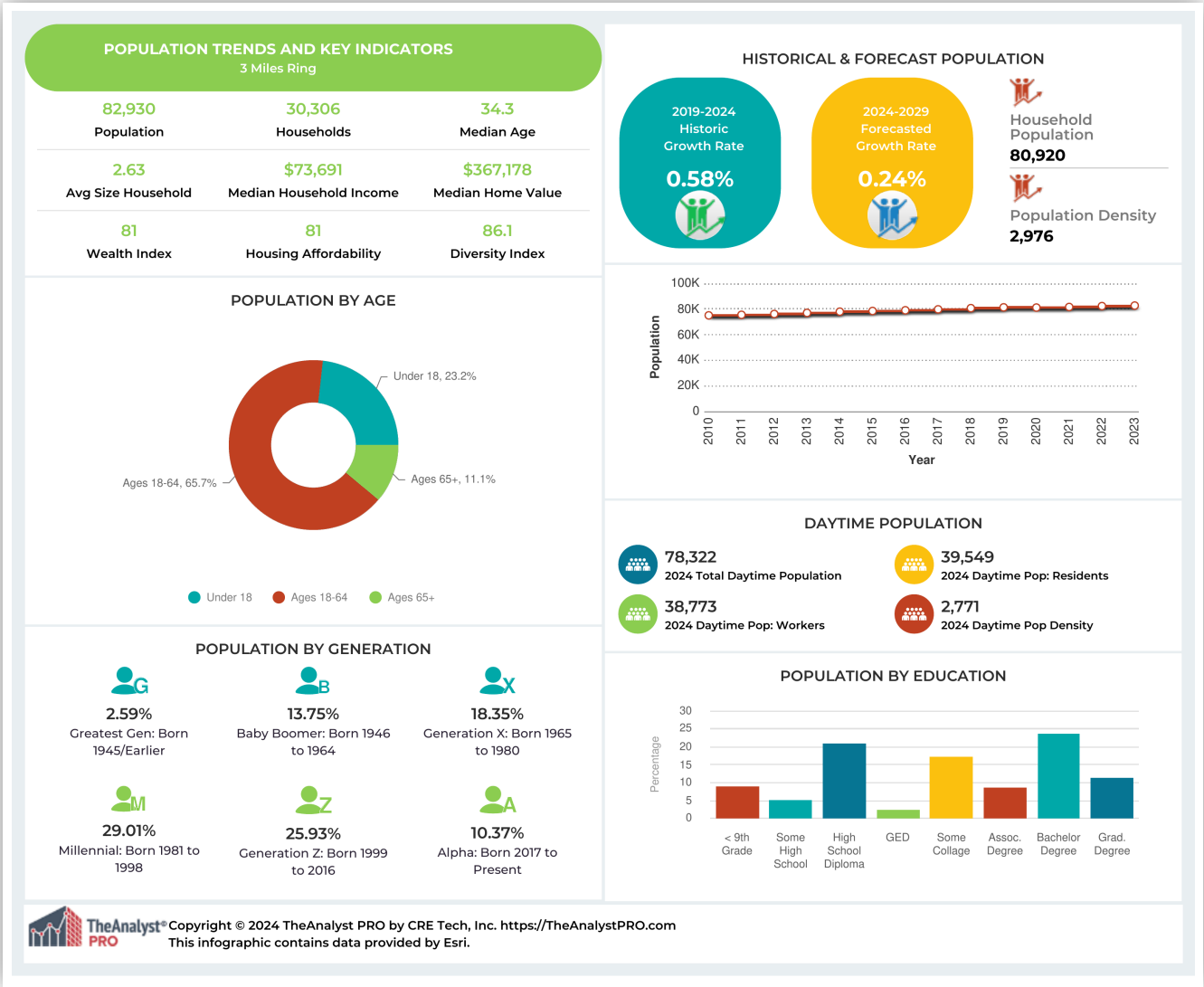


INFOGRAPHIC: POPULATION TRENDS (RING: 2 MILE RADIUS)



AUSTELL RD AUTO REPAIR/WAREHOUSE  
1708 Austell Rd SE, Marietta, GA, 30008

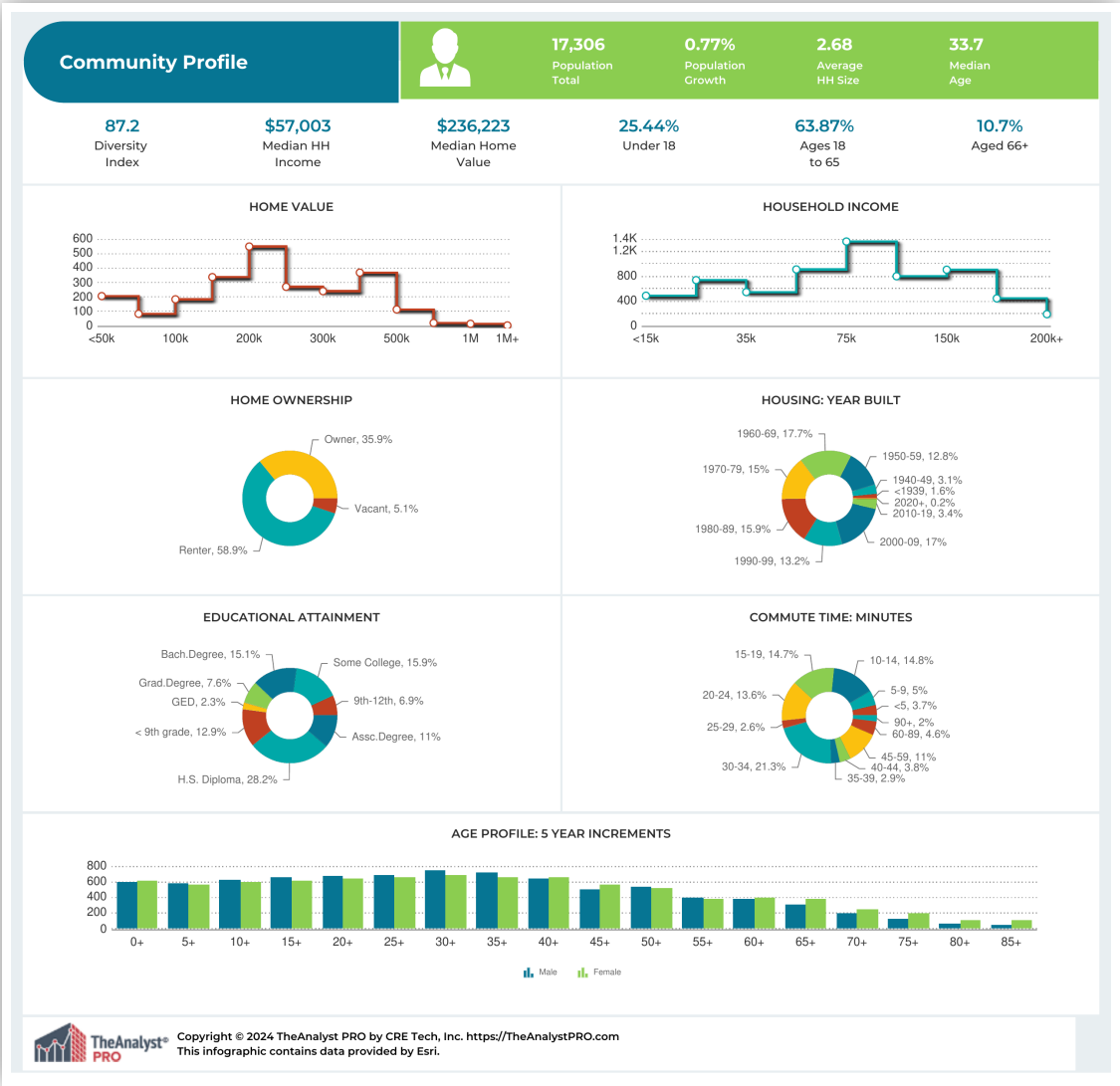
# INFOGRAPHIC: POPULATION TRENDS (RING: 3 MILE RADIUS)



AUSTELL RD AUTO REPAIR/WAREHOUSE  
1708 Austell Rd SE, Marietta, GA, 30008

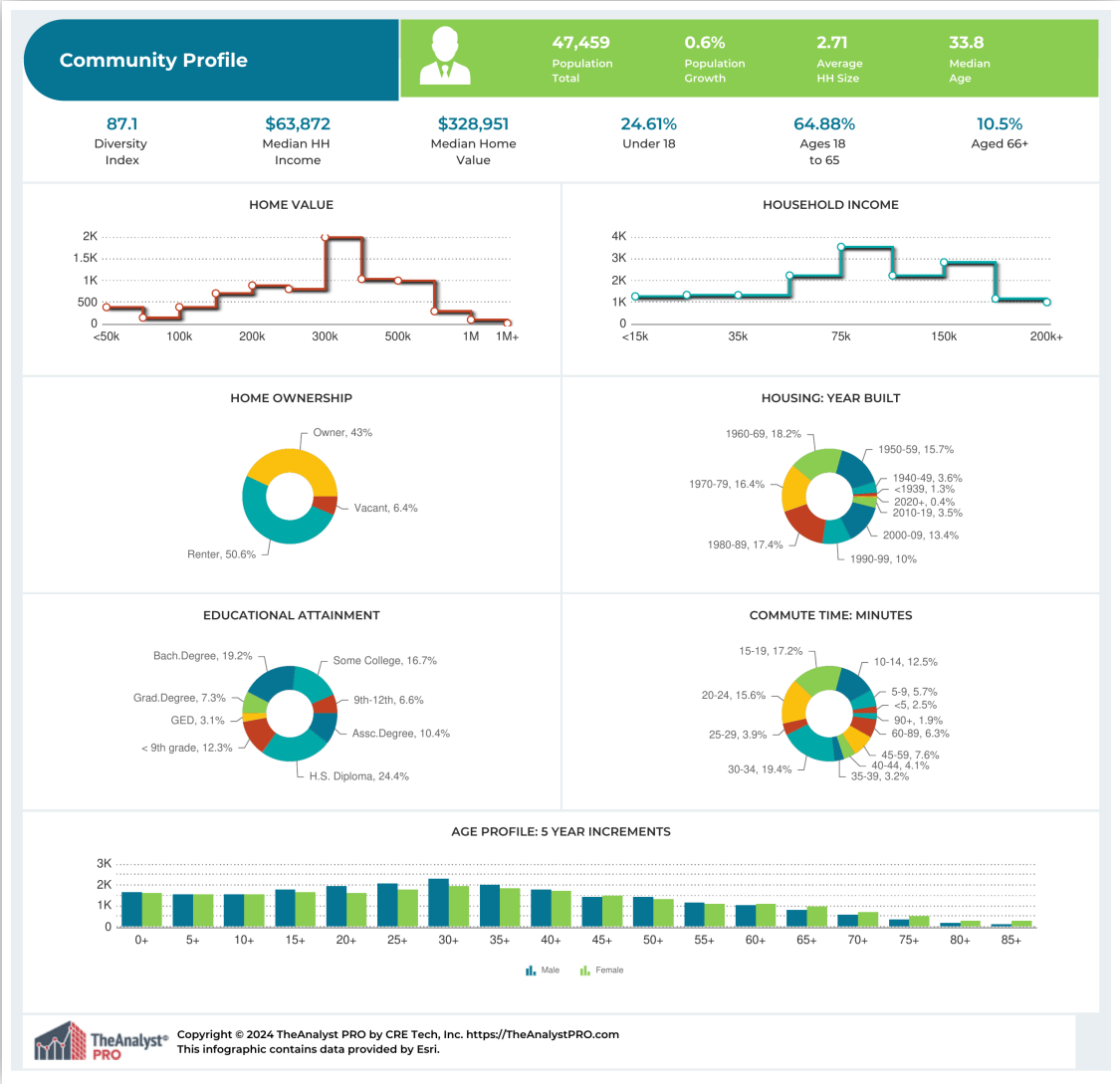


# INFOGRAPHIC: COMMUNITY PROFILE (RING: 1 MILE RADIUS)



AUSTELL RD AUTO REPAIR/WAREHOUSE  
1708 Austell Rd SE, Marietta, GA, 30008

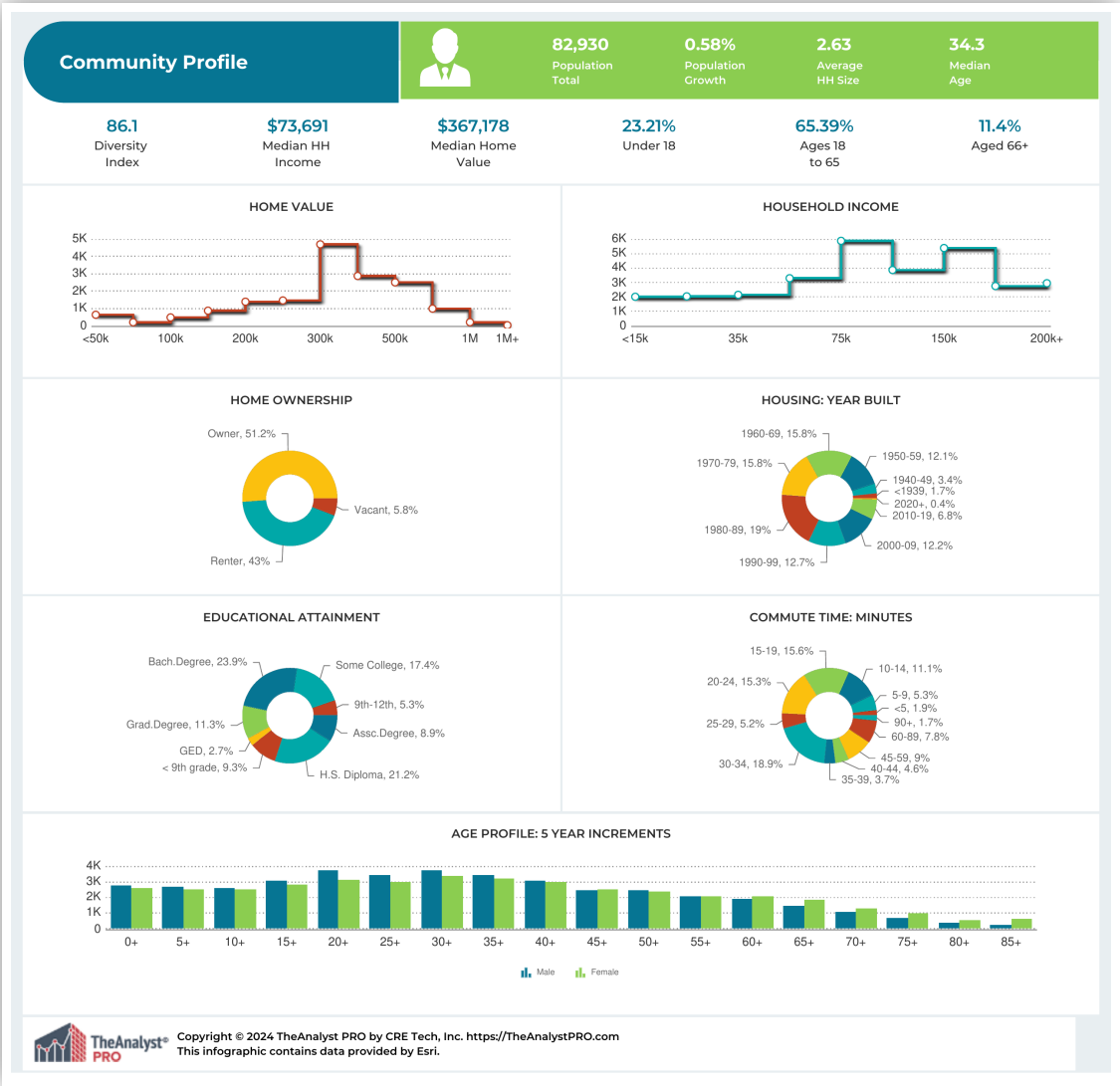
# INFOGRAPHIC: COMMUNITY PROFILE (RING: 2 MILE RADIUS)



**AUSTELL RD AUTO REPAIR/WAREHOUSE**  
1708 Austell Rd SE, Marietta, GA, 30008



# INFOGRAPHIC: COMMUNITY PROFILE (RING: 3 MILE RADIUS)



AUSTELL RD AUTO REPAIR/WAREHOUSE  
1708 Austell Rd SE, Marietta, GA, 30008

INFOGRAPHIC: LIFESTYLE / TAPESTRY (RING: 1 MILE RADIUS)

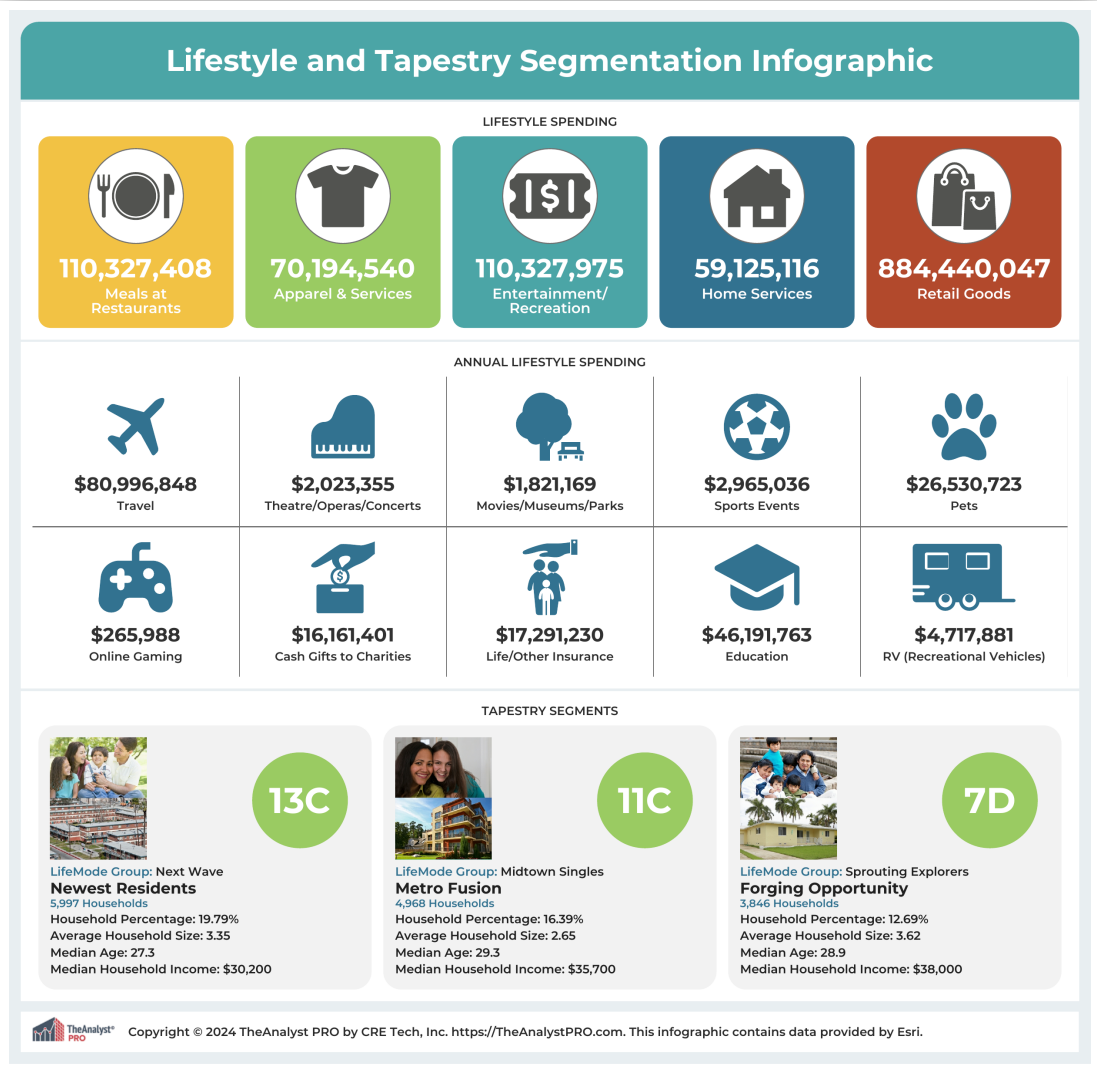




INFOGRAPHIC: LIFESTYLE / TAPESTRY (RING: 2 MILE RADIUS)



INFOGRAPHIC: LIFESTYLE / TAPESTRY (RING: 3 MILE RADIUS)





# INFOGRAPHIC: LIFESTYLE / TAPESTRY

## Esri Tapestry Segmentation

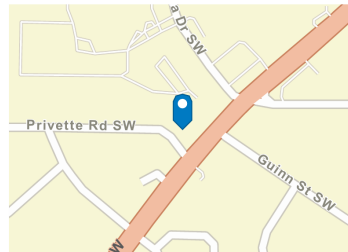
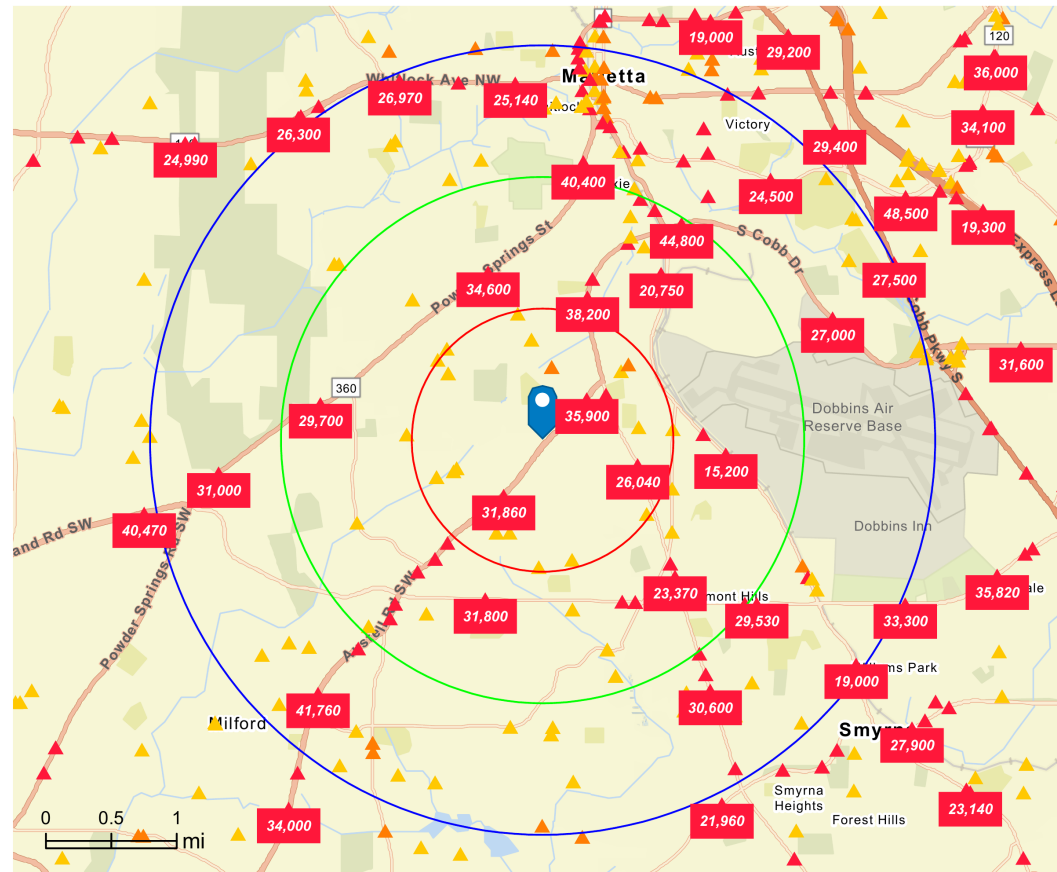
Tapestry Segmentation represents the latest generation of market segmentation systems that began over 30 years ago. The 68-segment Tapestry Segmentation system classifies U.S. neighborhoods based on their socioeconomic and demographic composition. Each segment is identified by its two-digit Segment Code. Match the two-digit segment labels on the report to the list below. Click each segment below for a detailed description.

Segment 1A (Top Tier)	Segment 5C (Parks and Rec)	Segment 8C (Bright Young Professionals)	Segment 11B (Young and Restless)
Segment 1B (Professional Pride)	Segment 5D (Rustbelt Traditions)	Segment 8D (Downtown Melting Pot)	Segment 11C (Metro Fusion)
Segment 1C (Boomburbs)	Segment 5E (Midlife Constants)	Segment 8E (Front Porches)	Segment 11D (Set to Impress)
Segment 1D (Savvy Suburbanites)	Segment 6A (Green Acres)	Segment 8F (Old and Newcomers)	Segment 11E (City Commons)
Segment 1E (Exurbanites)	Segment 6B (Salt of the Earth)	Segment 8G (Hardscrabble Road)	Segment 12A (Family Foundations)
Segment 2A (Urban Chic)	Segment 6C (The Great Outdoors)	Segment 9A (Silver & Gold)	Segment 12B (Traditional Living)
Segment 2B (Pleasantville)	Segment 6D (Prairie Living)	Segment 9B (Golden Years)	Segment 12C (Small Town Simplicity)
Segment 2C (Pacific Heights)	Segment 6E (Rural Resort Dwellers)	Segment 9C (The Elders)	Segment 12D (Modest Income Homes)
Segment 2D (Enterprising Professionals)	Segment 6F (Heartland Communities)	Segment 9D (Senior Escapes)	Segment 13A (International Marketplace)
Segment 3A (Laptops and Lattes)	Segment 7A (Up and Coming Families)	Segment 9E (Retirement Communities)	Segment 13B (Las Casas)
Segment 3B (Metro Renters)	Segment 7B (Urban Villages)	Segment 9F (Social Security Set)	Segment 13C (NeWest Residents)
Segment 3C (Trendsetters)	Segment 7C (American Dreamers)	Segment 10A (Southern Satellites)	Segment 13D (Fresh Ambitions)
Segment 4A (Soccer Moms)	Segment 7D (Barrios Urbanos)	Segment 10B (Rooted Rural)	Segment 13E (High Rise Renters)
Segment 4B (Home Improvement)	Segment 7E (Valley Growers)	Segment 10C (Diners & Miners)	Segment 14A (Military Proximity)
Segment 4C (Middleburg)	Segment 7F (Southwestern Families)	Segment 10D (Down the Road)	Segment 14B (College Towns)
Segment 5A (Comfortable Empty Nesters)	Segment 8A (City Lights)	Segment 10E (Rural Bypasses)	Segment 14C (Dorms to Diplomas)
Segment 5B (In Style)	Segment 8B (Emerald City)	Segment 11A (City Strivers)	Segment 15 (Unclassified)

## AUSTELL RD AUTO REPAIR/WAREHOUSE

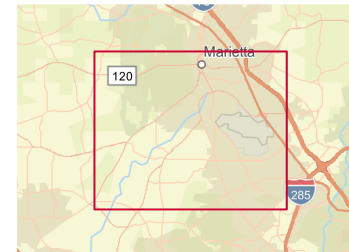
1708 Austell Rd SE, Marietta, GA, 30008

# TRAFFIC COUNT - STUDY AREA (RINGS: 1, 2, 3 MILE RADIUS)



## Average Daily Traffic Volume

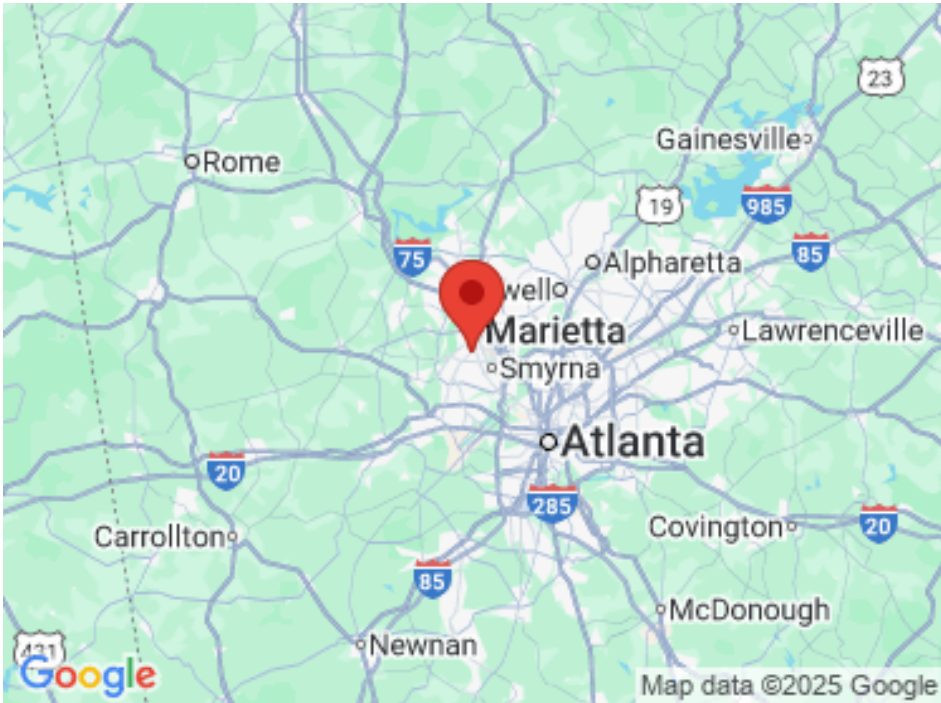
- ▲ Up to 8,000 vehicles per day
- ▲ 8,001 - 15,000
- ▲ 15,001 - 50,000
- ▲ 50,001 - 70,000
- ▲ 70,001 - 100,000
- ▲ More than 100,000 per day



## AUSTELL RD AUTO REPAIR/WAREHOUSE

1708 Austell Rd SE, Marietta, GA, 30008

# AREA LOCATION MAP



**AUSTELL RD AUTO REPAIR/WAREHOUSE**  
1708 Austell Rd SE, Marietta, GA, 30008



# AERIAL ANNOTATION MAP



## AUSTELL RD AUTO REPAIR/WAREHOUSE

1708 Austell Rd SE, Marietta, GA, 30008

# STREET VIEW MAP



**AUSTELL RD AUTO REPAIR/WAREHOUSE**  
1708 Austell Rd SE, Marietta, GA, 30008



# CONTACT



**Cravens Doggett**

Phone: 678-852-3833

Email: [cravens@kw.com](mailto:cravens@kw.com)



**AUSTELL RD AUTO  
REPAIR/WAREHOUSE**

**1708 Austell Rd SE  
Marietta, GA 30008**



**678-852-3833**



**[cravens@kw.com](mailto:cravens@kw.com)**



**3930 East Jones Bridge Rd  
Peachtree Corners, GA 30092 United States**