



**Available**

Approximately 6,700 RSF  
(Divisible)

**Rate**

\$2.25/PSF, FSG

**Term**

Negotiable  
1-5 Years or longer available

- Beautiful Plug & Play Professional Space
- Open Ceilings with Drop Ceiling Private Offices
- New Furniture and Equipment Available For Use
- Located in 7<sup>th</sup> Street's Restaurant Row:
  - Whole Foods
  - Q Sushi
  - Joey DTLA
  - Sugarfish
  - Le Grand
  - Tocaya Organica
  - Sheraton Hotel
  - Nomad Hotel
- 12 Windowed Offices
- Conference Room
- Reception Area
- Large Kitchen/Break Room
- Polished Concrete Floors
- Large Open Work Area
- Exposed Brick Columns
- Beautiful New Furniture

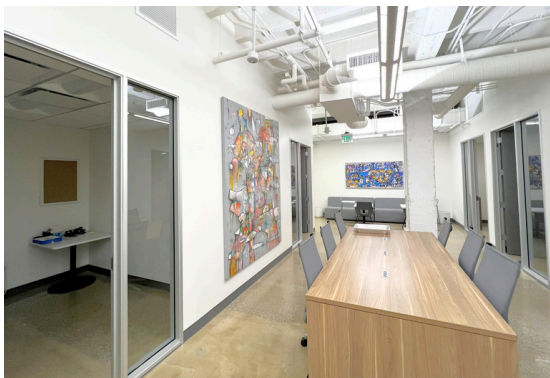
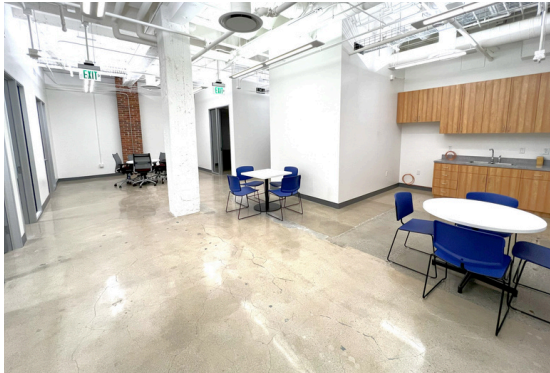


**Jeff Lipson**  
310.202.9008 x 113  
jlipson@wilshireag.com  
DRE# 01196852

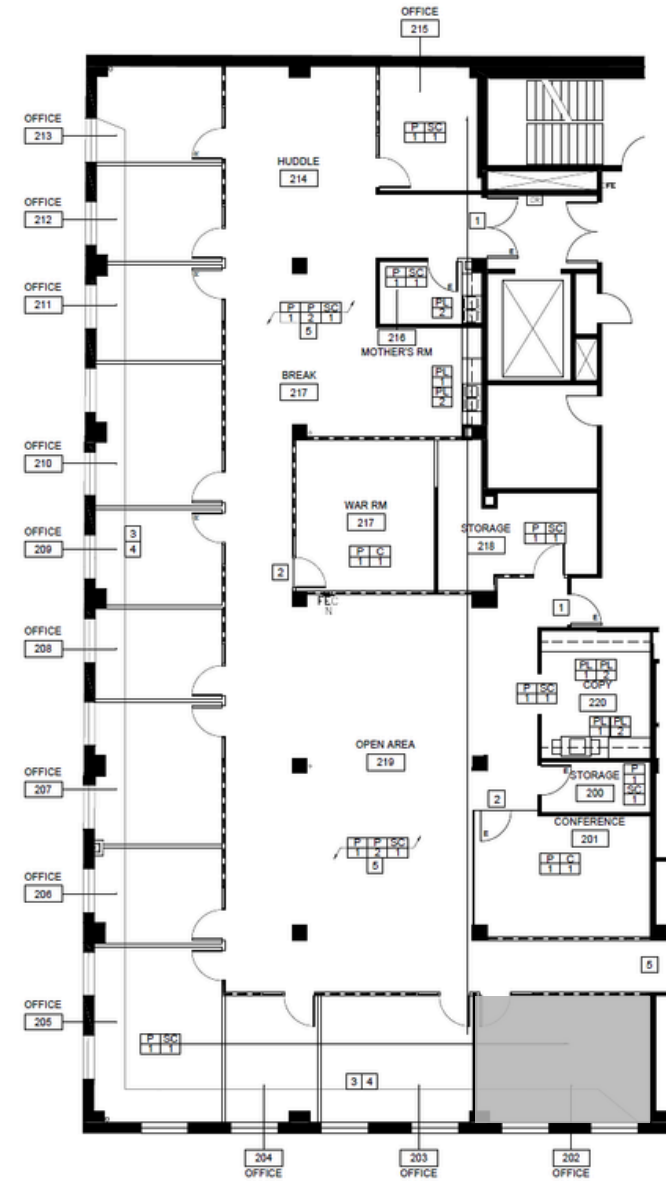
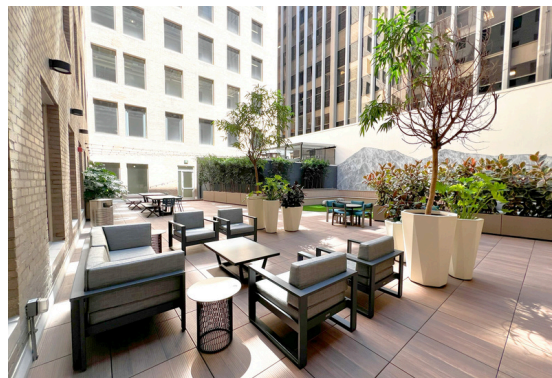


**Kiersten Echon**  
310.202.9008 x 136  
kiersten@wilshireag.com  
DRE# 02339219

Space Photos



Building Photos



**Jeff Lipson**  
310.202.9008 x 113  
jlipson@wilshireag.com  
DRE# 01196852



**Kiersten Echon**  
310.202.9008 x 136  
kiersten@wilshireag.com  
DRE# 02339219