

250-252 Chaddick Drive, Wheeling, IL

15,662 SF For Sale



6B TAX REDUCTION IN PLACE

**FOR SALE: Hard to Find Free Standing Building**

AVAILABLE: +/- 15,662 SF

LAND: 1.14 Acres

OFFICE: 3,500 SF

BUILT: 1989

CAR PARKING: 29 Spaces

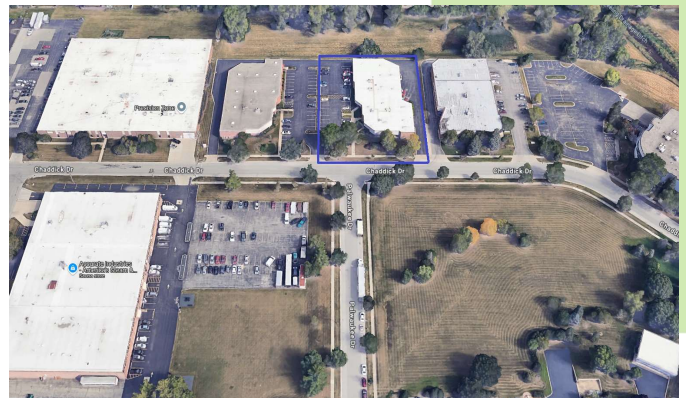
ZONING: I2

LOADING: 2 DID's, 2 Exterior Docks

CEILING: +/- 16' Clear

TAXES: \$2.36 PSF (2023)

**FOR SALE: \$1,899,000**



- Single or Two Tenant Building (Separately Metered)
- Newer Roof
- Office Remodeled
- Previous Uses Include Roofing Company and Auto Sales

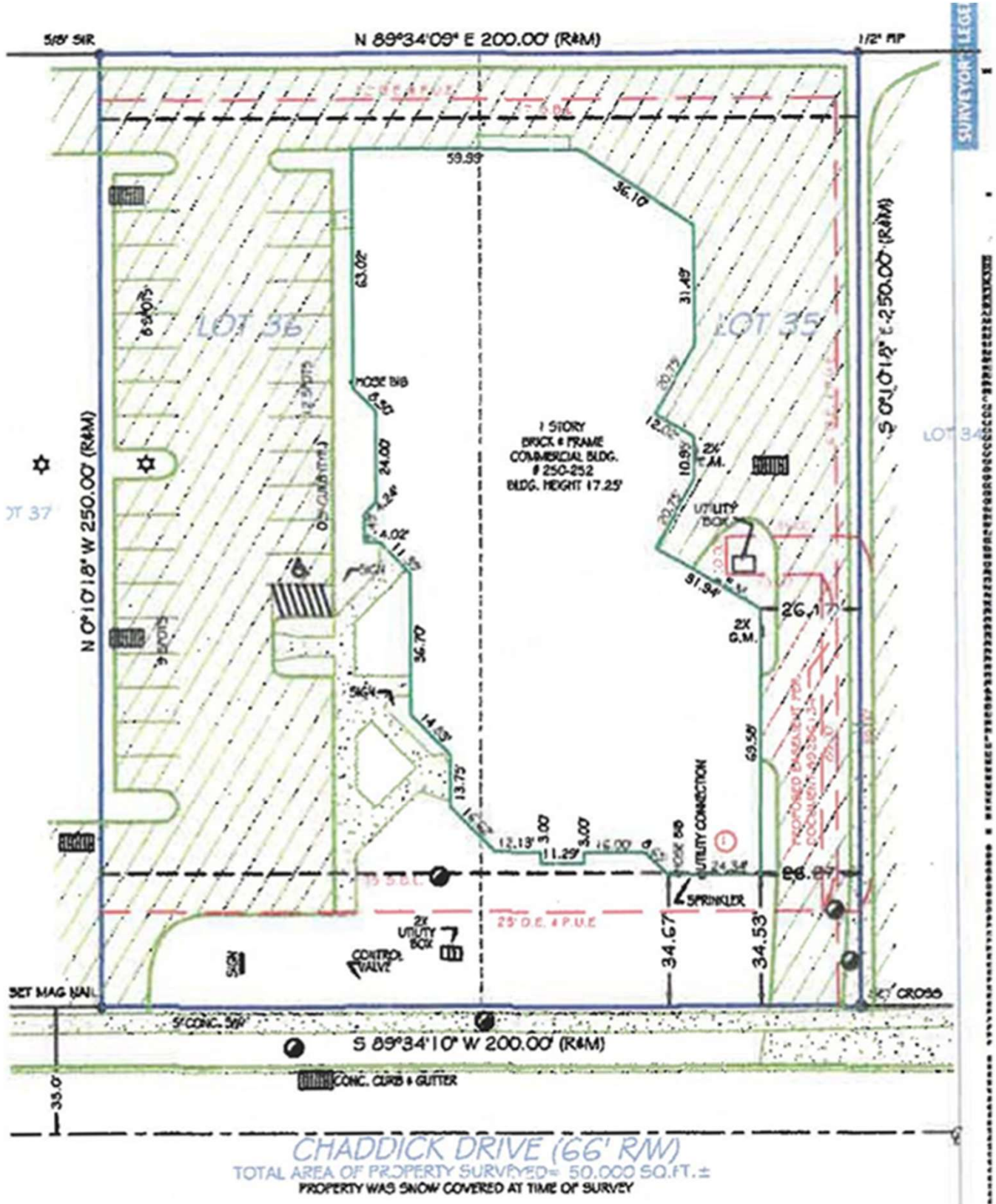
**ENTRE**  
Commercial Realty LLC

Brian Bocci, SIOR  
847-310-4296  
bbocci@entreccommercial.com

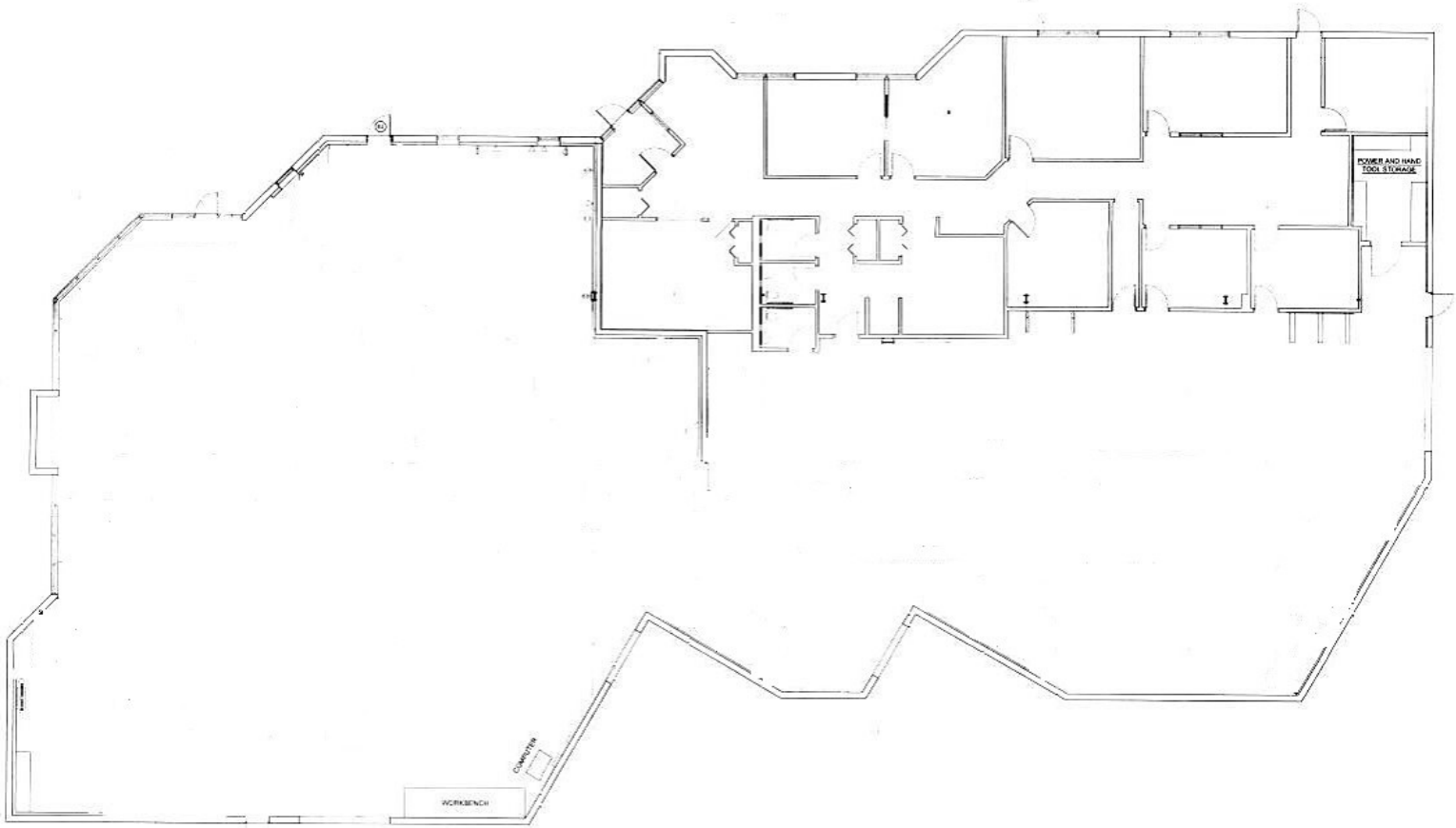
SCAN FOR LISTING



# SITE PLAN



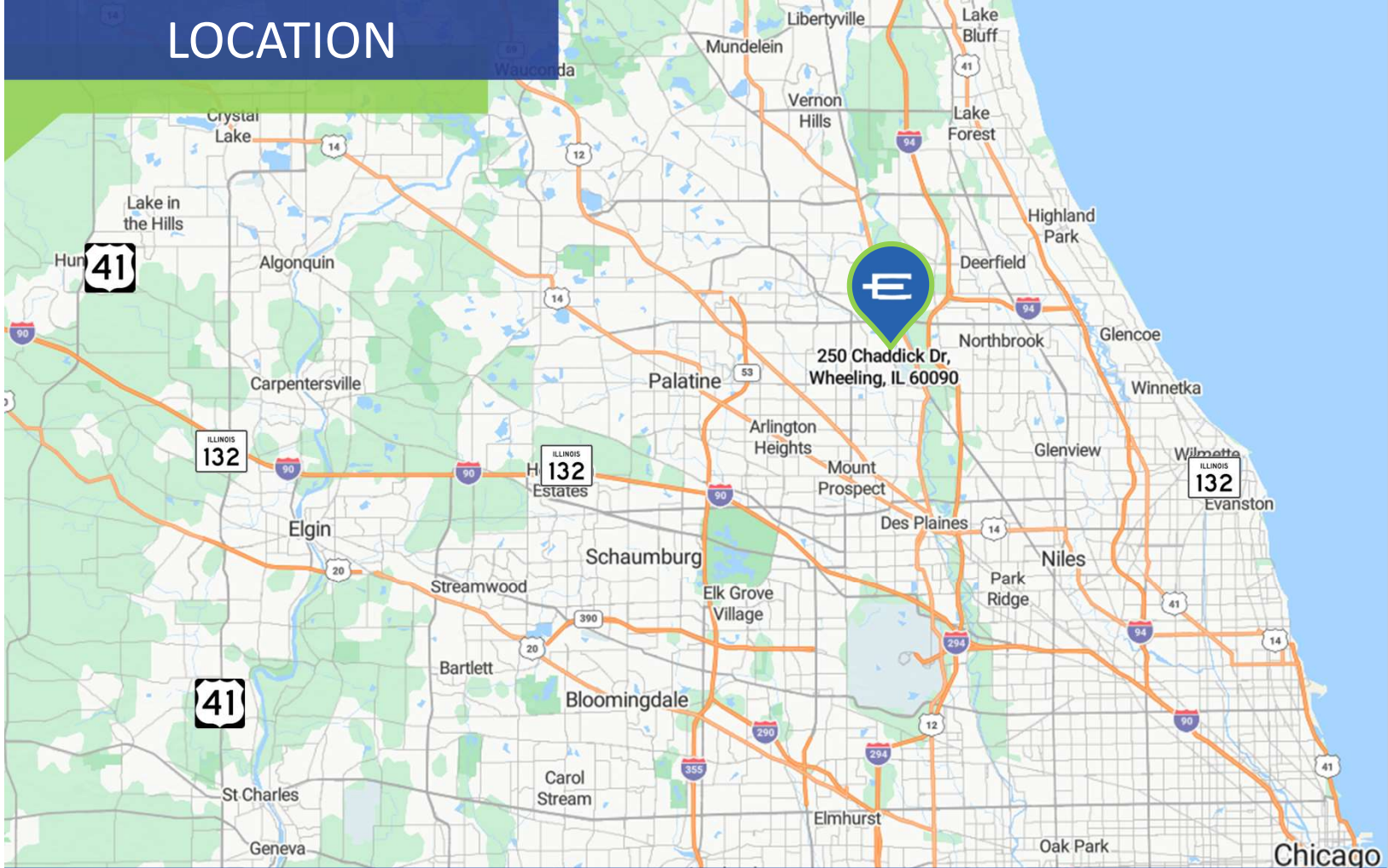
# FLOOR PLAN



# PHOTOS



# LOCATION



## 250-252 Chaddick Drive, Wheeling

- Hard to Find Free Standing Building
- 6B Tax Reduction in Place
- Great Location
- Well Maintained

**Brian Bocci, SIOR**  
847-310-4296  
bbocci@entrecmercial.com

