

688-700 MORRIS TURNPIKE
SHORT HILLS, NEW JERSEY
FOR LEASE | 1,241 SF

SHANE WIERKS
swierks@jefferyrealty.com
C: 908.581.7781
O: 908.668.9600



JEFFERY REALTY 52 Millburn Ave. • Springfield, NJ 07081 • T: 908.668.9600 • F: 908.662.5225 • www.JefferyRealty.com

Retail Specialist

All information is from sources deemed reliable and is submitted subject to errors, omissions, change of price, terms, prior sales and withdrawals.

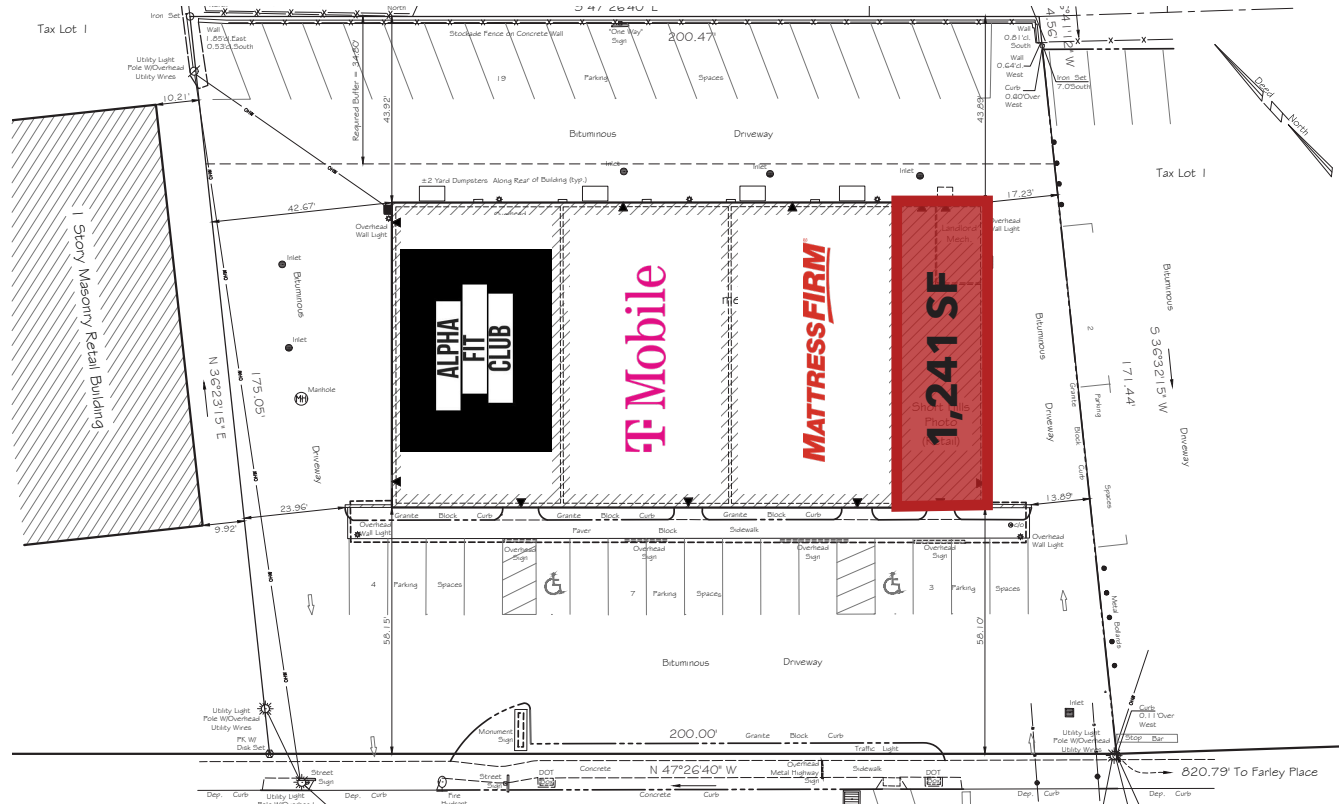


688-700 MORRIS TURNPIKE

SHORT HILLS, NEW JERSEY

FOR LEASE | 1,241 SF

SITE INFORMATION



GLA: 10,071 SF

AVAILABLE: Store A: 1,241 SF

ASKING: Call for Quote

CAM: estimated \$12.00 PSF

PARKING: ~35 spaces (parking in front and rear)

FRONTAGE: 200' on Morris Turnpike

NOTES: Located at a traffic lit intersection of Morris Turnpike and Cleveland Place

688-700 MORRIS TURNPIKE

SHORT HILLS, NEW JERSEY

FOR LEASE | 1,241 SF

