

2800

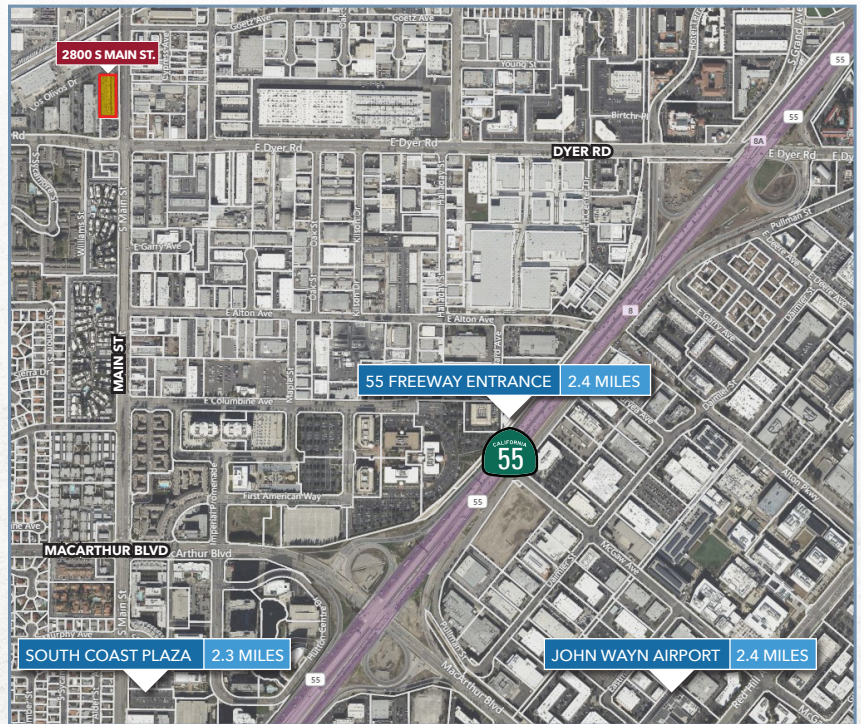
SOUTH MAIN STREET
SANTA ANA, CA 92705



**OFFICE/FLEX CONDOMINIUM
AVAILABLE FOR SALE
±2,549 SQ. FT.**

PROPERTY FEATURES

- » CAT5 Wiring Throughout
- » Herman Miller Furniture (Could be Purchased)
- » Executive Kitchen (Dramatically Above Standard)
- » Server Room with Dedicated HVAC
- » Hotel Caliber Restrooms
- » Built by a Designer for a Designer.
- » Hospital Grade Carpet
- » Cherry Wood, Glass Doors, 2x2 Fine Line Ceiling Grid, Crown Molding - Call for more Details about the upgrades.



CHARLIE WINN

949.724.4763

cwinn@lee-associates.com

DRE #: 01151176

JOHN COLLINS

949.724.4757

jcollins@lee-associates.com

DRE #: 01235509

GABRIELLE OWENS

949.724.4768

gowens@lee-associates.com

DRE #: 02198418

LEE & ASSOCIATES

COMMERCIAL REAL ESTATE SERVICES
NEWPORT BEACH

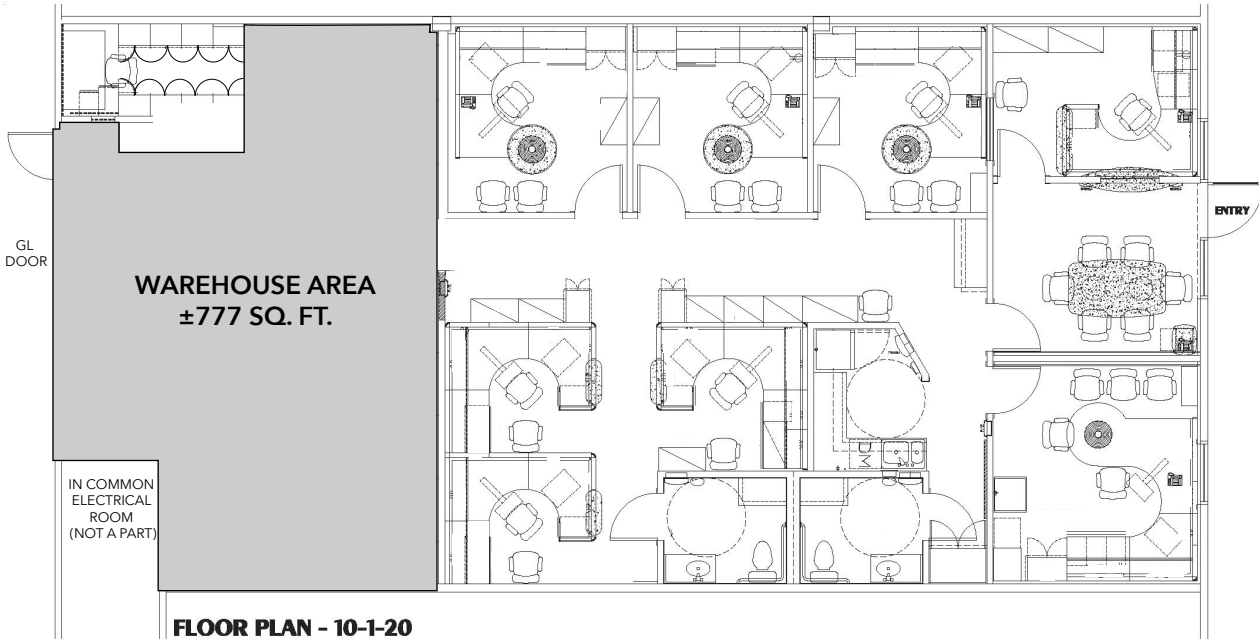
The information contained herein has been obtained from the property owner or other third party and is provided to you without verification as to accuracy. We (Lee & Associates, its brokers, employees, agents, principals, officers, directors and affiliates) make no warranty or representation regarding the information, property, or transaction. You and your attorneys, advisors and consultants should conduct your own investigation of the property and transaction.

2800

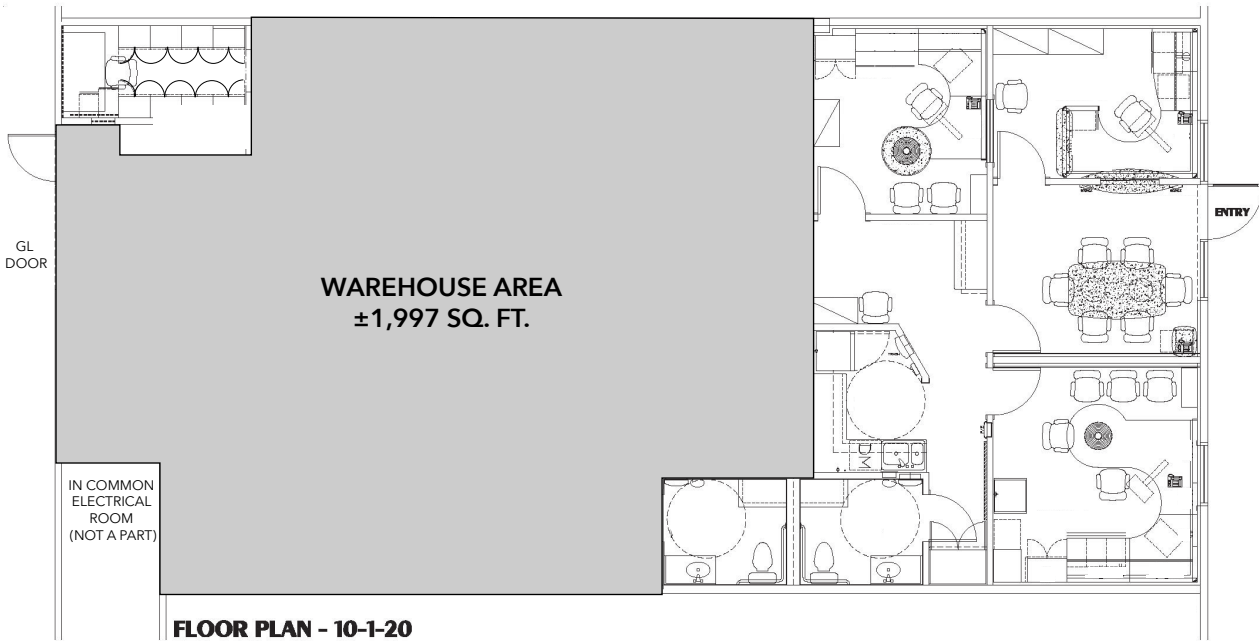
SOUTH MAIN STREET
SANTA ANA, CA 92705



CONCEPTUAL PLAN 1



CONCEPTUAL PLAN 2



CHARLIE WINN

949.724.4763

cwinn@lee-associates.com

DRE #: 01151176

JOHN COLLINS

949.724.4757

jcollins@lee-associates.com

DRE #: 01235509

GABRIELLE OWENS

949.724.4768

gowens@lee-associates.com

DRE #: 02198418

LEE & ASSOCIATES

COMMERCIAL REAL ESTATE SERVICES
NEWPORT BEACH

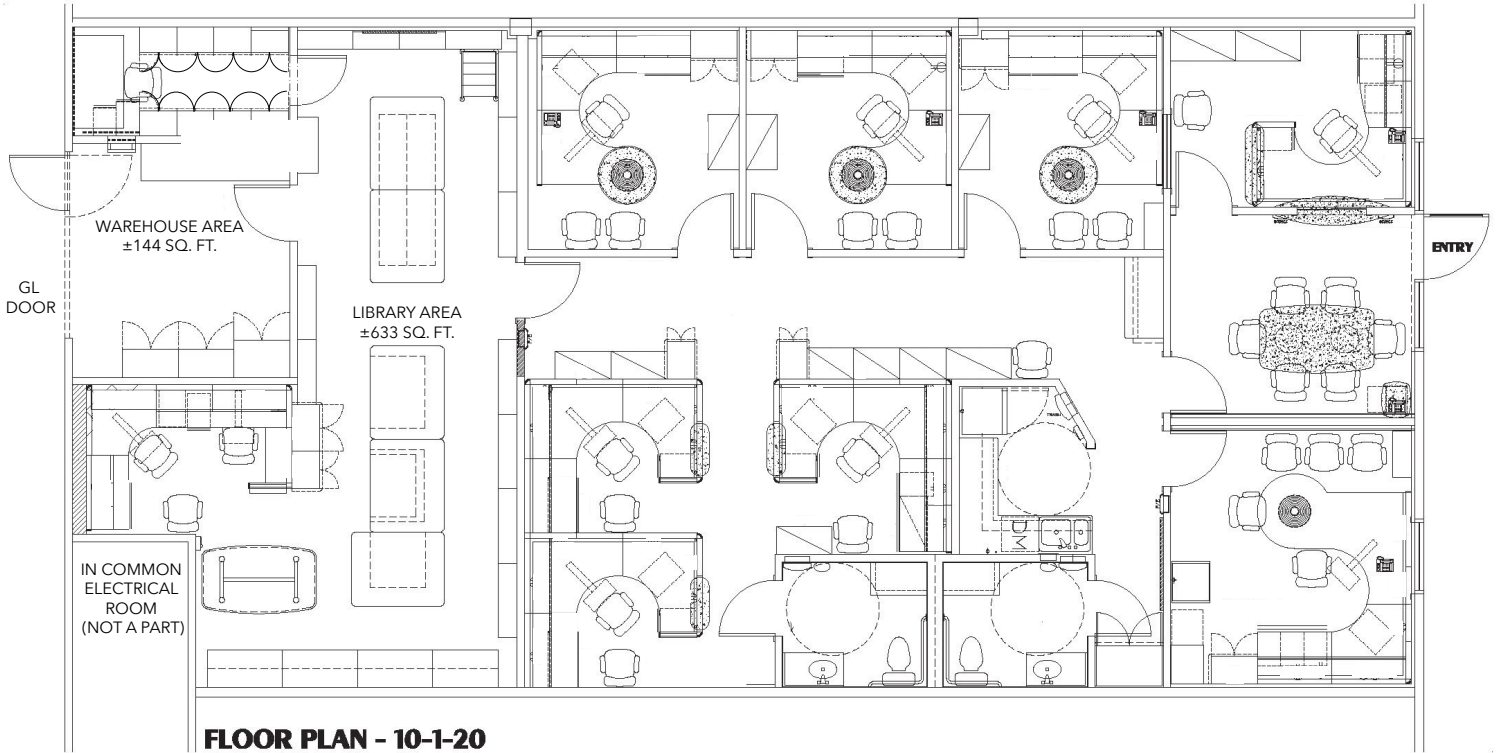
The information contained herein has been obtained from the property owner or other third party and is provided to you without verification as to accuracy. We (Lee & Associates, its brokers, employees, agents, principals, officers, directors and affiliates) make no warranty or representation regarding the information, property, or transaction. You and your attorneys, advisors and consultants should conduct your own investigation of the property and transaction.

2800

SOUTH MAIN STREET
SANTA ANA, CA 92705



AS BUILT PLAN



CHARLIE WINN

949.724.4763

cwinn@lee-associates.com

DRE #: 01151176

JOHN COLLINS

949.724.4757

jcollins@lee-associates.com

DRE #: 01235509

GABRIELLE OWENS

949.724.4768

gowens@lee-associates.com

DRE #: 02198418

 **LEE & ASSOCIATES**
COMMERCIAL REAL ESTATE SERVICES
NEWPORT BEACH

The information contained herein has been obtained from the property owner or other third party and is provided to you without verification as to accuracy. We (Lee & Associates, its brokers, employees, agents, principals, officers, directors and affiliates) make no warranty or representation regarding the information, property, or transaction. You and your attorneys, advisors and consultants should conduct your own investigation of the property and transaction.