

For Sale

# Country Estates Cir. & W. Huffaker Ln.



160 Country Estates Cir.  
Reno, NV 89511

**Michael Keating, SIOR**  
Partner  
775.386.9727  
mkeating@logicCRE.com  
S.0174942

**Michael Dorn**  
Senior Associate  
775.453.4436  
mdorn@logicCRE.com  
S.0189635

# Listing Snapshot



**\$2,500,000**  
Sale Price



**± 6,716 SF**  
Total Square Footage



**\$ 372 PSF**  
Price Per Square Footage

## Property Highlights

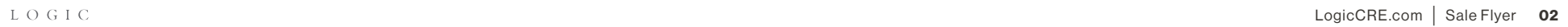
- Stand alone office building with ability to owner-occupy
- Located in the Quail Country Estates office park
- PO Zoning
- 20 surface parking spaces
- Current tenant in ± 4,456 SF through July of 2026 - contact broker for further information
- Currently demised into two (2) suites
- ± 2,260 SF separate suite currently vacant
- Medical office layout in the ± 4,456 SF suite

## Demographics

|                               | 1-mile    | 3-mile    | 5-mile    |
|-------------------------------|-----------|-----------|-----------|
| 2025 Population               | 7,050     | 64,210    | 153,002   |
| 2025 Average Household Income | \$120,480 | \$125,863 | \$137,235 |
| 2025 Total Households         | 3,198     | 27,175    | 65,284    |

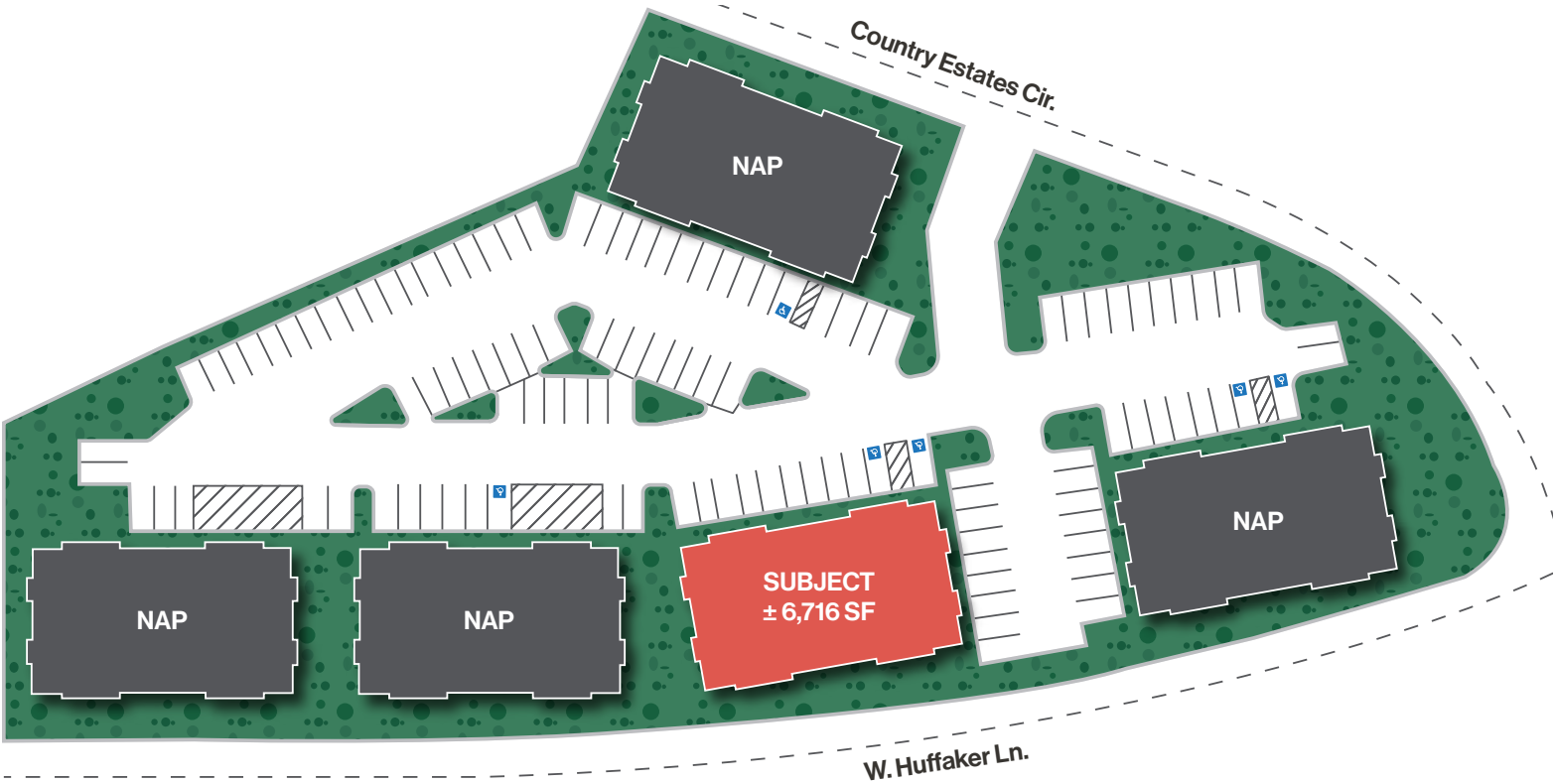






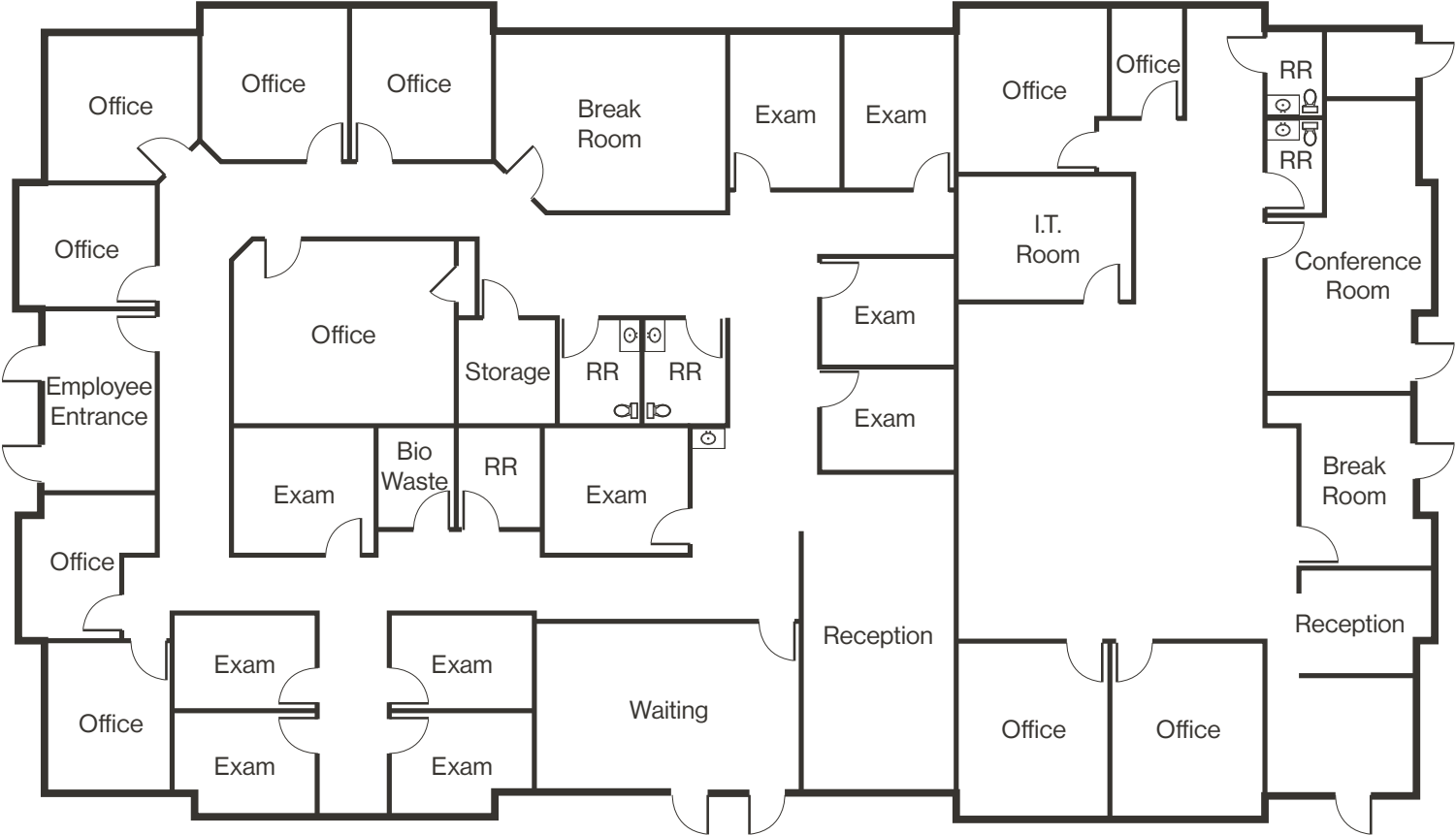






# Floor Plan

- Eleven (11) private offices
- Ten (10) exam rooms
- Two (2) break rooms
- Five (5) private restrooms
- Built-in reception for both suites





Property Photos



# LOGIC Commercial Real Estate

## Specializing in Brokerage and Receivership Services



Join our email list and  
connect with us on LinkedIn

The information herein was obtained from sources deemed reliable; however LOGIC Commercial Real Estate makes no guarantees, warranties or representation as to the completeness or accuracy thereof.

For inquiries please reach out to our team.

**Michael Keating, SIOR**

Partner  
775.386.9727  
mkeating@logicCRE.com  
S.0174942

**Michael Dorn**

Senior Associate  
775.453.4436  
mdorn@logicCRE.com  
S.0189635