



TEMPLE

Real Estate Services

7100 NE 12th Ave.
Pleasant Hill, IA 50327

- **Lot Size:**
37.49 Acres (Will Subdivide)
- **Price:**
Call For Pricing
- **Use:**
Commercial / High Density
- **Parcel ID:**
221/00103-031-319
- **Location:**
NE Corner of NE University Ave., and NE 70th St.

Dillon Temple

(515) 669-1238

dillon@templeres.com

Derek Temple

(515) 601-5989

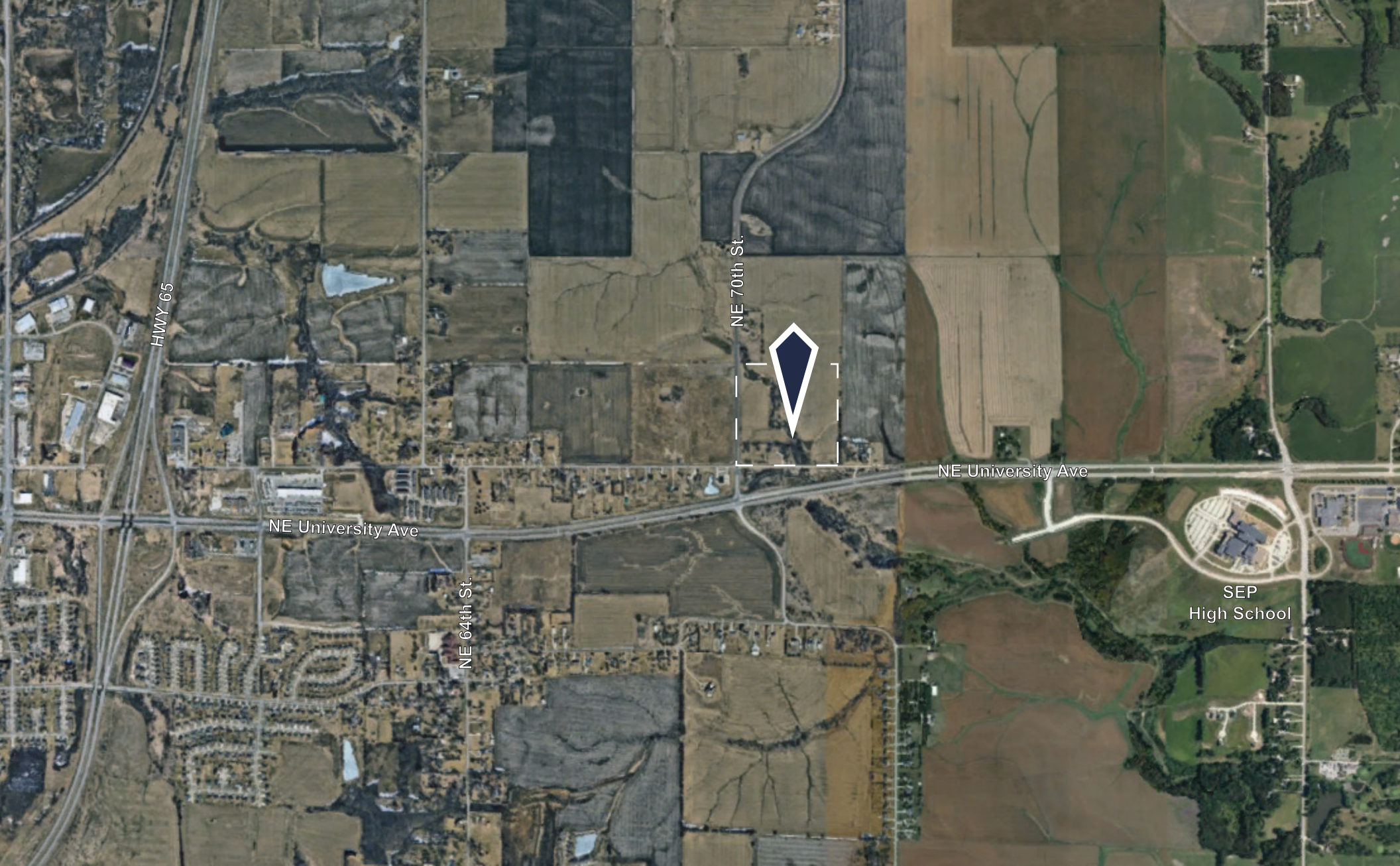
derek@templeres.com



info@templeres.com | 1015 NW 10th St., Waukee, IA 50263 | www.templeres.com

The information contained herein, we believe, has been obtained from reasonably reliable sources, and we have no reason to doubt the accuracy of such information; however, no warranty or guarantee either expressed or implied, is made with respect to the accuracy thereof. All such information submitted is subject to error, omissions, or changes in conditions, prior to sale, lease, or withdrawal without notice. All information contained herein should be verified to the satisfaction of the persons relying thereon. Angle, LLC D/B/A Angle Realty is licensed to sell real estate in the State of Iowa.

Licensed to sell real estate in the State of Iowa



Dillon Temple
(515) 669-1238
dillon@templeres.com

Derek Temple
(515) 601-5989
derek@templeres.com



TEMPLE
Real Estate Services

info@templeres.com | 1015 NW 10th St., Waukee, IA 50263 | www.templeres.com

Licensed to sell real estate in the State of Iowa



Dillon Temple
(515) 669-1238
dillon@templeres.com

Derek Temple
(515) 601-5989
derek@templeres.com

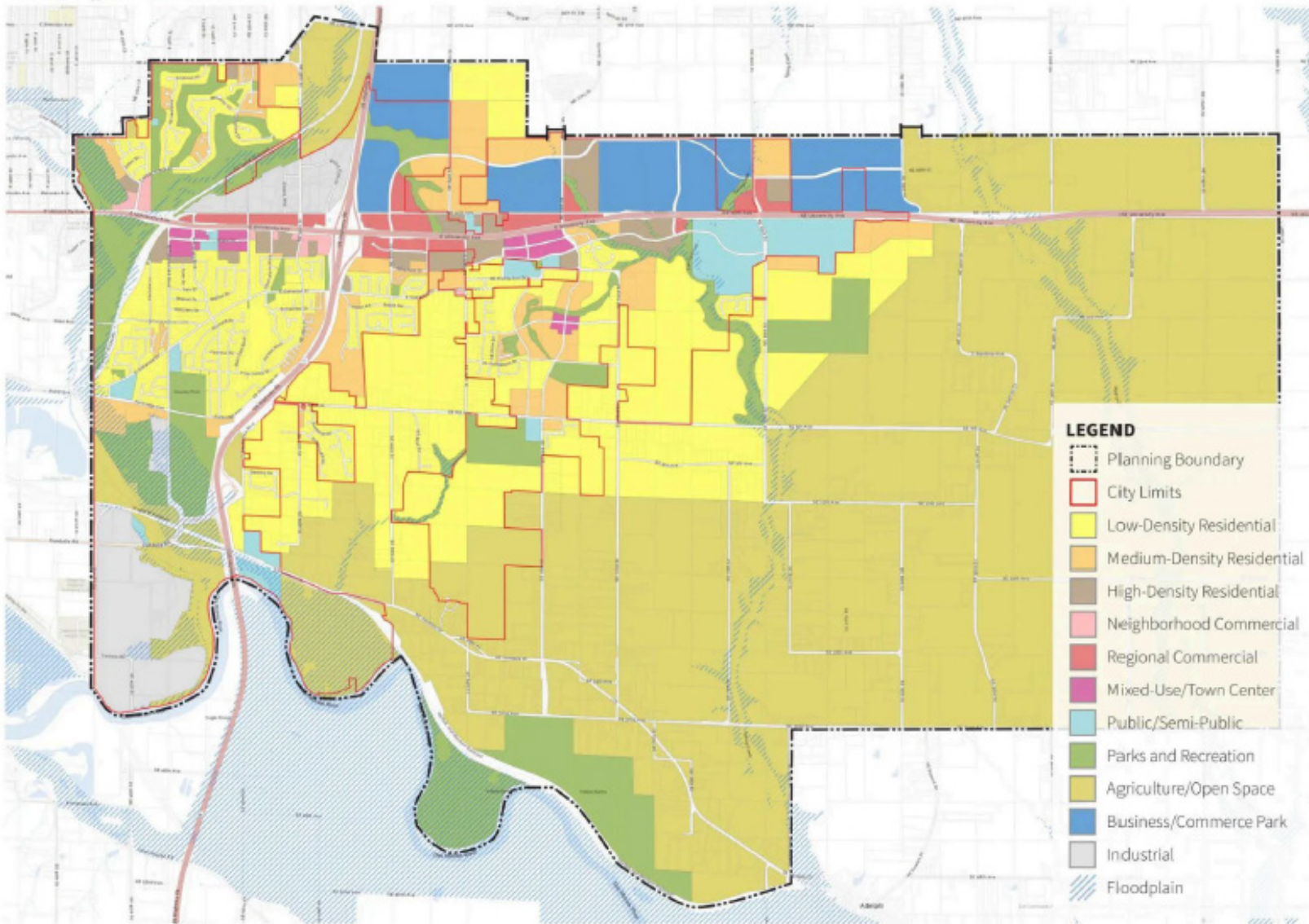


TEMPLE
Real Estate Services

info@templeres.com | 1015 NW 10th St., Waukee, IA 50263 | www.templeres.com

Licensed to sell real estate in the State of Iowa

FIGURE 2.6 // FUTURE LAND USE MAP



DRAFT SEPTEMBER 2024

Land Use + Subarea Plans 27

Dillon Temple
(515) 669-1238
dillon@templeres.com

Derek Temple
(515) 601-5989
derek@templeres.com

