



FOR SALE

**Manufacturing & Office
Building with Yard
2701 South Stoughton Road
MADISON, WI 53716**

CHRIS CAULUM, SIOR
Vice President of Commercial Brokerage
(608) 443-1040
ccaulum@oakbrookcorp.com

BRYANT MEYER, CCIM
Commercial Broker Associate
(608) 443-1004
bmeyer@oakbrookcorp.com



PROPERTY SUMMARY

Weir - Main Campus
2701 South Stoughton Road | Madison, WI 53716



Property Summary

Price:	\$7,950,000
Building SF:	Approx. 139,500
Clear Height:	27-31'
Construction Type:	Steel Frame
Overhead Cranes:	11 Total (5-20 Ton Capacity)
Grade Doors:	7
Outside Storage:	Permitted - Fenced
Power:	(TBV) 4,000 amps @ 480v
Sprinklers:	Yes
Yard:	Approximately 1.5 acres
Year Built:	1971-2014
Zoning:	IG - Industrial General

Property Overview

High-quality manufacturing and distribution facility with heavy power, cranes, 7 drive-in doors and fenced outdoor storage.
Main plant: 124,500 SF with 34,000 SF office and wet sprinkler.
Pole Building 15,000 SF unheated with dry sprinkler.
265 parking stalls, 1.5 acres of fenced outside storage yard.

Location Overview

Ideal Madison East location along US HWY 51 with excellent visibility and ease of access to US HWY 12/18 and I90/94, perfect for local and regional manufacturers and distributors.

PROPERTY PHOTOS

Weir - Main Campus

2701 South Stoughton Road | Madison, WI 53716

03



CHRIS CAULUM, SIOR
(608) 443-1040
ccaalum@oakbrookcorp.com

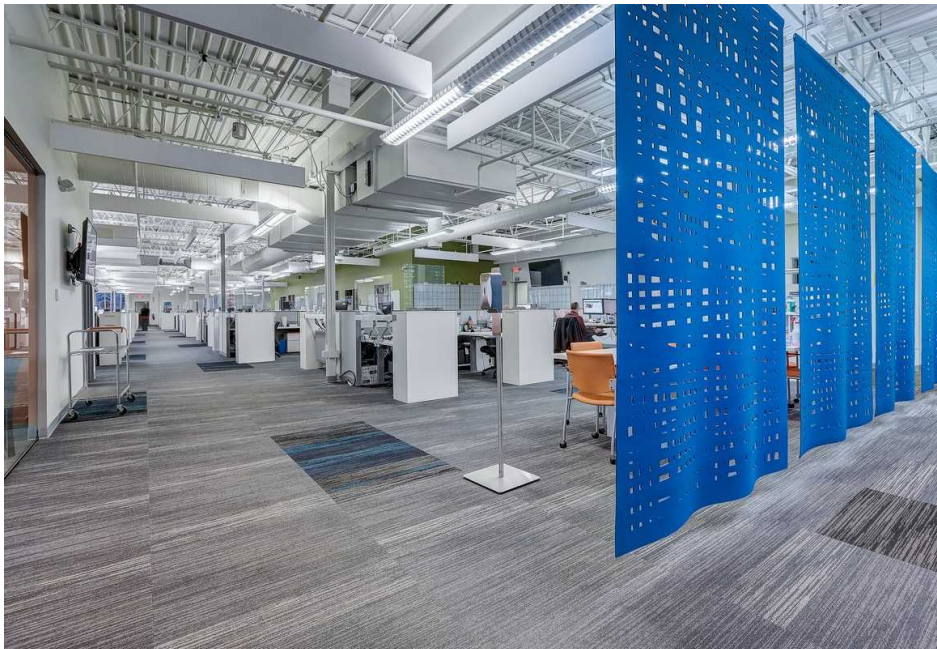
BRYANT MEYER, CCIM
(608) 443-1004
bmeyer@oakbrookcorp.com

 **Oakbrook**
Integrated Real Estate Services

PROPERTY PHOTOS

Weir - Main Campus

2701 South Stoughton Road | Madison, WI 53716



CHRIS CAULUM, SIOR
(608) 443-1040
ccaalum@oakbrookcorp.com

BRYANT MEYER, CCIM
(608) 443-1004
bmeyer@oakbrookcorp.com

PROPERTY PHOTOS

Weir - Main Campus

2701 South Stoughton Road | Madison, WI 53716



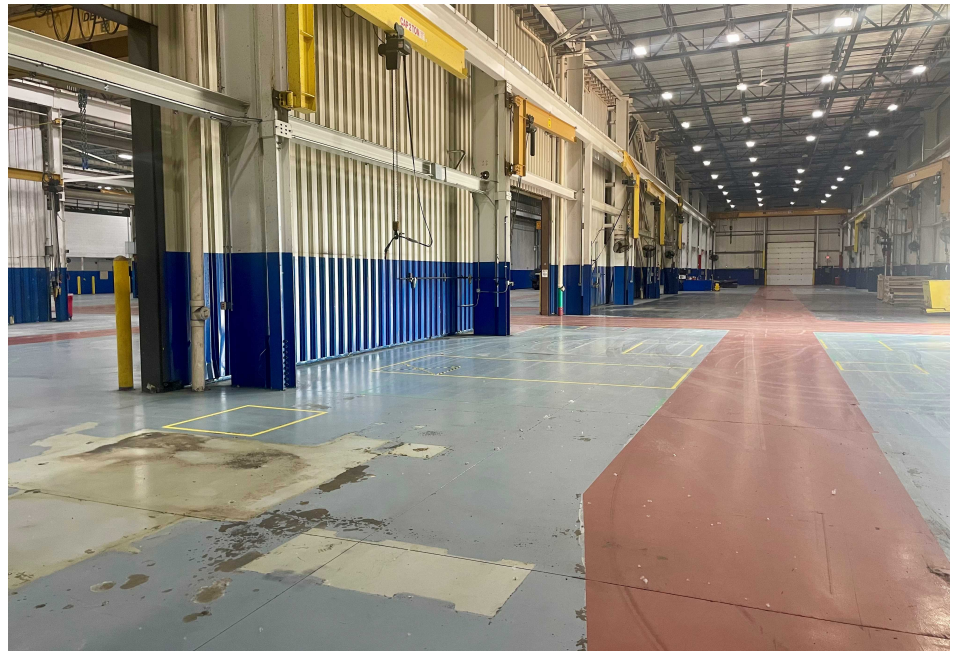
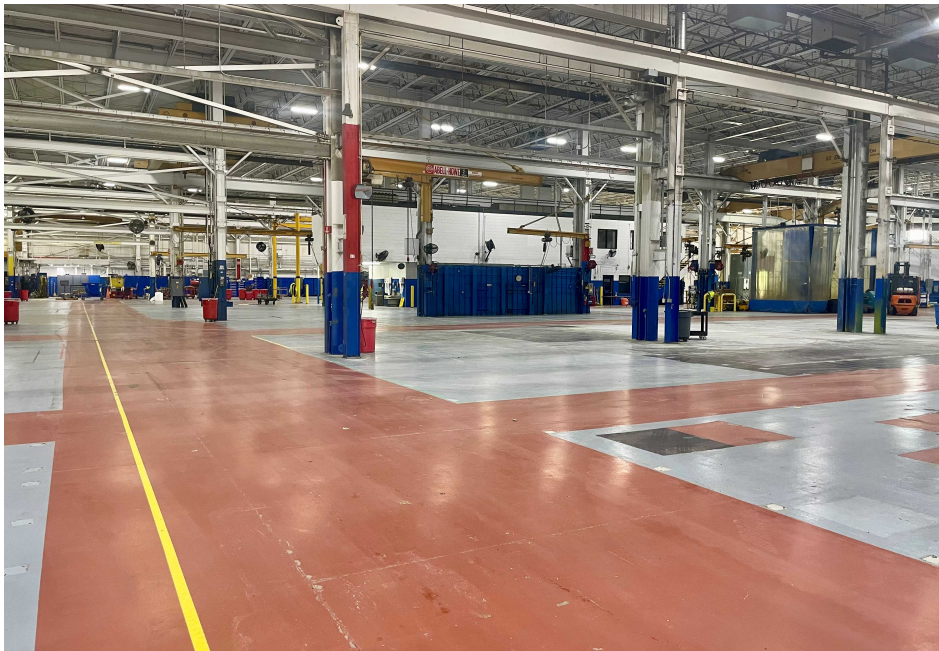
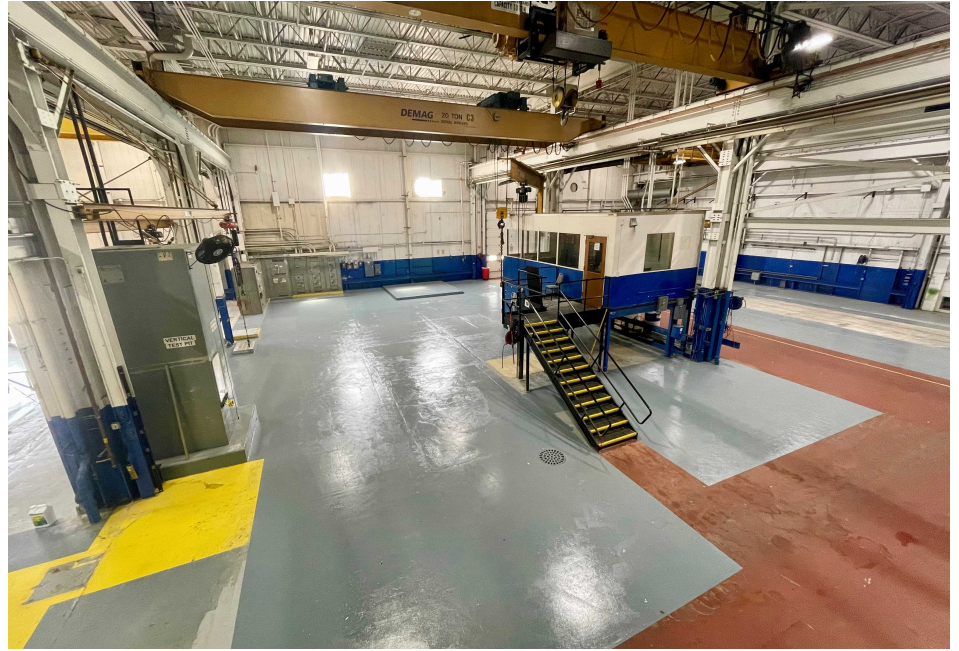
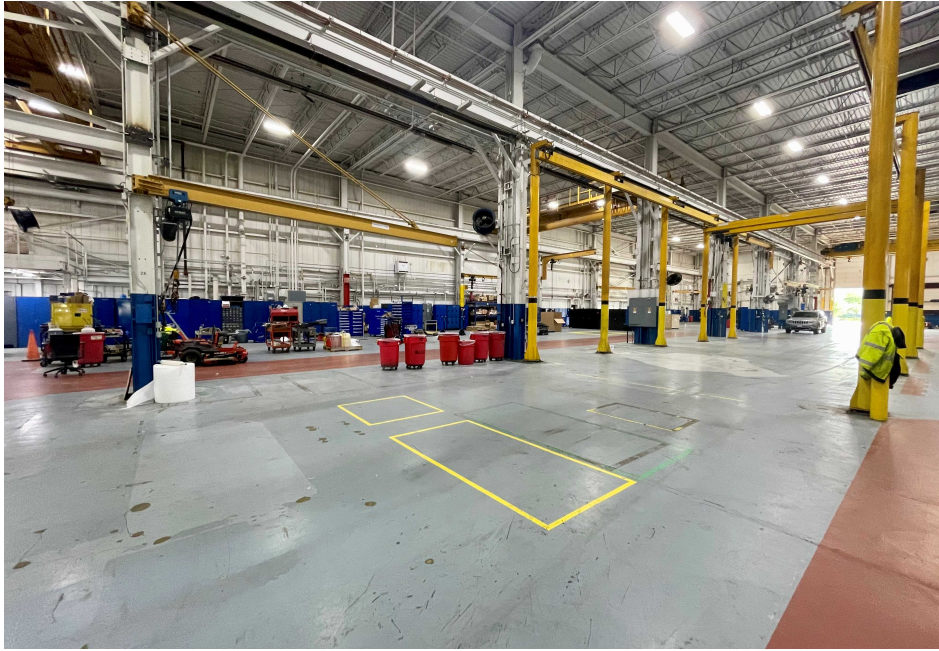
CHRIS CAULUM, SIOR
(608) 443-1040
ccaalum@oakbrookcorp.com

BRYANT MEYER, CCIM
(608) 443-1004
bmeyer@oakbrookcorp.com

PROPERTY PHOTOS

Weir - Main Campus

2701 South Stoughton Road | Madison, WI 53716



CHRIS CAULUM, SIOR
(608) 443-1040
ccaalum@oakbrookcorp.com

BRYANT MEYER, CCIM
(608) 443-1004
bmeyer@oakbrookcorp.com

MANUFACTURING BUILDING - 124,000 SF

Weir - Main Campus

2701 South Stoughton Road | Madison, WI 53716

07



CHRIS CAULUM, SIOR
(608) 443-1040
ccaalum@oakbrookcorp.com

BRYANT MEYER, CCIM
(608) 443-1004
bmeyer@oakbrookcorp.com

 **Oakbrook**
Integrated Real Estate Services

STORAGE BUILDING - 15,000 SF

Weir - Main Campus

2701 South Stoughton Road | Madison, WI 53716



CHRIS CAULUM, SIOR
(608) 443-1040
ccaalum@oakbrookcorp.com

BRYANT MEYER, CCIM
(608) 443-1004
bmeyer@oakbrookcorp.com

AERIAL - FACING NORTHEAST

Weir - Main Campus

2701 South Stoughton Road | Madison, WI 53716



CHRIS CAULUM, SIOR
(608) 443-1040
ccaalum@oakbrookcorp.com

BRYANT MEYER, CCIM
(608) 443-1004
bmeyer@oakbrookcorp.com

SITE MAP

Weir - Main Campus

2701 South Stoughton Road | Madison, WI 53716



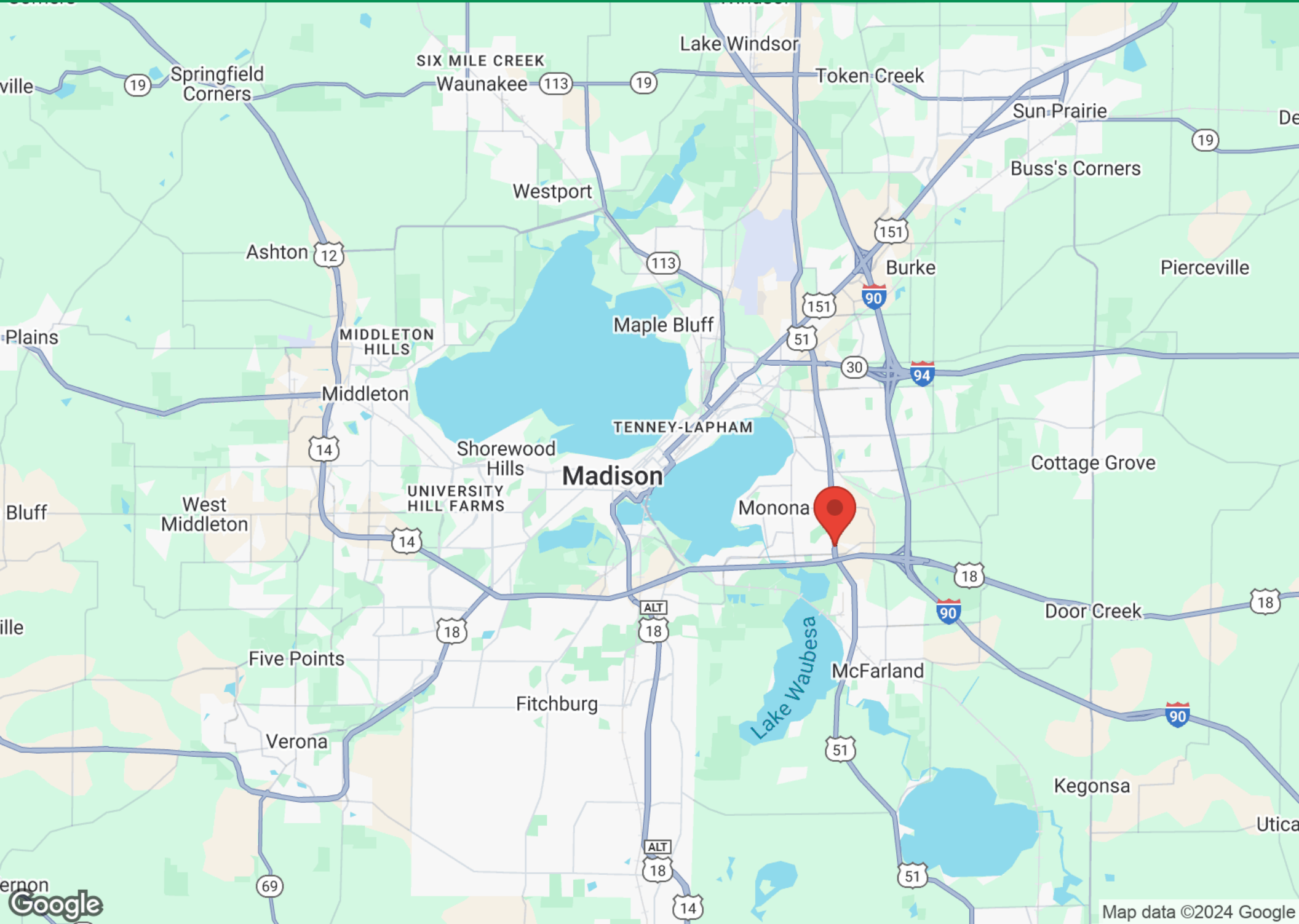
CHRIS CAULUM, SIOR
(608) 443-1040
ccaalum@oakbrookcorp.com

BRYANT MEYER, CCIM
(608) 443-1004
bmeyer@oakbrookcorp.com

REGIONAL MAP

Weir - Main Campus

2701 South Stoughton Road | Madison, WI 53716



State of Wisconsin - Disclose to Non-Residential Customers

Prior to negotiating on your behalf the brokerage firm, or an agent associated with the firm, must provide you the following disclosure statement:

DISCLOSURE TO CUSTOMERS

You are a customer of the brokerage firm (hereinafter Firm). The Firm is either an agent of another party in the transaction or a subagent of another firm that is the agent of another party in the transaction. A broker or a salesperson acting on behalf of the Firm may provide brokerage services to you. Whenever the Firm is providing brokerage services to you, the Firm and its brokers and salespersons (hereinafter Agents) owe you, the customer, the following duties:

- (a) The duty to provide brokerage services to you fairly and honestly.
 - (b) The duty to exercise reasonable skill and care in providing brokerage services to you.
 - (c) The duty to provide you with accurate information about market conditions within a reasonable time if you request it, unless disclosure of the information is prohibited by law.
 - (d) The duty to disclose to you in writing certain Material Adverse Facts about a property, unless disclosure of the information is prohibited by law. (See Definition of Material Adverse Facts below).
 - (e) The duty to protect your confidentiality. Unless the law requires it, the Firm and its Agents will not disclose your confidential information or the confidential information of other parties.
 - (f) The duty to safeguard trust funds and proposals in an objective and unbiased manner and disclose the advantages and disadvantages of the proposals. other property held by the Firm or its Agents.
 - (g) The duty, when negotiating, to present contract proposals in an objective and unbiased manner and disclose the advantages and disadvantages of the proposals.
- Please review this information carefully. An Agent of the Firm can answer your questions about brokerage services, but if you need legal advice, tax advice, or a professional home inspection, contact an attorney, tax advisor, or home inspector. This disclosure is required by section 452.135 of the Wisconsin statutes and is for information only. It is a plain-language summary of the duties owed to a customer under section 452.133(1) of the Wisconsin statutes.

CONFIDENTIALITY NOTICE TO CUSTOMERS

The Firm and its Agents will keep confidential any information given to the Firm or its Agents in confidence, or any information obtained by the Firm and its Agents that a reasonable person would want to be kept confidential, unless the information must be disclosed by law or you authorize the Firm to disclose particular information. The Firm and its Agents shall continue to keep the information confidential after the Firm is no longer providing brokerage services to you. • The following information is required to be disclosed by law: 1. Material Adverse Facts, as defined in Wis. Stat. § 452.01(5g) (see "Definition of Material Adverse Facts" below). 2. Any facts known by the Firm or its Agents that contradict any information included in a written inspection report on the property or real estate that is the subject of the transaction. To ensure that the Firm and its Agents are aware of what specific information you consider confidential, you may list that information below. At a later time, you may also provide the Firm or its Agents with other information you consider to be confidential.

CONFIDENTIAL INFORMATION: _____

NON- CONFIDENTIAL INFORMATION (the following information may be disclosed by the Firm and its Agents): _____

(Insert information you authorize to be disclosed, such as financial qualification information.)

DEFINITION OF MATERIAL ADVERSE FACTS

A "Material Adverse Fact" is defined in Wis. Stat. § 452.01(5g) as an Adverse Fact that a party indicates is of such significance, or that is generally recognized by a competent licensee as being of such significance to a reasonable party, that it affects or would affect the party's decision to enter into a contract or agreement concerning a transaction or affects or would affect the party's decision about the terms of such a contract or agreement. An "Adverse Fact" is defined in Wis. Stat. § 452.01(1e) as a condition or occurrence that a competent licensee generally recognizes will significantly and adversely affect the value of the property, significantly reduce the structural integrity of improvements to real estate, or present a significant health risk to occupants of the property; or information that indicates that a party to a transaction is not able to or does not intend to meet his or her obligations under a contract or agreement made concerning the transaction.

NOTICE ABOUT SEX OFFENDER REGISTRY You may obtain information about the sex offender registry and persons registered with the registry by contacting the Wisconsin Department of Corrections on the Internet at <http://www.doc.wi.gov> or by telephone at 608-240-5830.